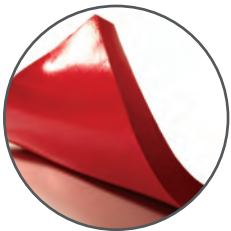


CLASSIC MAT

RSP600
RSP625

Athletes, coaches, and officials prefer the look, feel, and comfort of the Classic Mat.



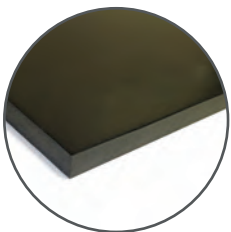
SUPERIOR DURABILITY

Made from closed-cell rubber nitrile foam core, the longest lasting foam available. With two complete wrestling surfaces, the life of your mat is doubled.



OUTSTANDING PROTECTION

One of the most shock-absorbing foams for its thickness. Meets or exceeds the ASTM 355 impact test.



LONG-TERM INVESTMENT

Coated on all sides with our exclusive #457 poly-vinyl paint. The easiest to clean and disinfect. Reconditioning available for extended use.


The Mat Company

www.resilite.com | 1.800.843.6287

NCAA

THE OFFICIAL MAT SUPPLIER TO THE
NCAA® WRESTLING CHAMPIONSHIPS