

Vichy Shower Pre-Installation Assessment – Page 1

Thank you for your interest in TouchAmerica's Hydro-Kinetic Vichy Shower. The following checklist will help ensure that the installation site for your new equipment is adequately prepared. It will also help you understand basic installation requirements, and will assist in ease of installation and optimal operation of your new equipment.

Essential:

- I have received and reviewed the specifications for the Hydro-Kinetic Vichy Shower.
- I understand that I am responsible for complying with all local building codes that pertain to the installation of the Vichy Shower.
- Vichy Shower will have ¾" diameter supply lines originating from main supply lines, which are ¾" diameter or larger.
- Water supply lines must be positioned on the wall where Vichy Shower is to be located, per specifications, or alternate water supply attachment must be established.
- Vichy Shower may consume as much as 20 gallons per minute of water, when in operation with all showerheads in use.
- Facility needs a hot water supply that can recover at least 80 gallons of hot water per hour for the Vichy Shower.
- The exact requirement for hot water for this shower will vary, depending upon user-selected temperature and type of treatments performed.
- If using commercial tankless water heaters, you will need to notify your provider about recovery rate needed to provide an adequate volume of hot water for the Vichy Shower.
- Other hot water demands, in addition to the Vichy Shower, must be considered when determining the hot water supply for the entire facility. (It is recommended that a design-professional review the overall hot water requirements for the facility).
- The wet room needs to have a floor drain that is 2-3" in diameter.
- The floor drain should be located in an area that will be under the wet table.
- The wall supporting the Vichy Shower must be strong enough to support the Rainbar, and structured so that the Rainbar can be attached. Refer to Vichy Installation Instructions for details; these instructions are sent with product.
- If wall supporting Vichy Shower is not strong enough to support Rainbar, inform TouchAmerica that you need optional mounting stand included in your order.
- The Vichy Shower and wet table occupy a space 3 feet wide and 8 feet long; make sure wet room is large enough to accommodate them, while also allowing a minimum of 2 feet of working room around the wet table.
- All electrical outlets in the wet room must be GFI protected.

Vichy Shower Pre-Installation Assessment – Page 2

Recommended, but not essential:

- ❑ The floor of the Vichy Shower room is waterproof and slopes so that all water will flow to floor drain.
- ❑ Walls of Vichy Shower room are protected from splashing water to a 5' height above the floor.
- ❑ The room is wide enough for the 6' Rainbar to swing completely flat to the wall supporting the shower.
- ❑ Storage cabinets are constructed from water-resistant materials or are at least 6' from wet table.
- ❑ Room is well ventilated to remove excess moisture when not in use.
- ❑ Room has no heat vents that may cause drafts in the location of the wet table.
- ❑ Infrared lights are available, either in the ceiling over the table or on rolling stands, to provide additional heat and comfort.
- ❑ An extra drain or floor sink is installed away from wet table, to make cleaning wet room easier.

Shipping:

The Vichy Shower is shipped vertically in a carton measuring 85"H x 41"W x 48"L. Shipping weight is 145 lbs. If TouchAmerica is arranging freight service for you, please let your TouchAmerica representative know at time of freight quote if you need Lift Gate, Inside Delivery and/or 24-Hour Call-Ahead for Delivery Appointment.

You may request a truck equipped with a Lift Gate, which transfers freight to ground level, especially if you do not have a loading dock. If you would like the driver to assist your staff in bringing the shipping carton into exterior doors (no stairs/elevators or into interior rooms), select Inside Delivery. Driver will usually call when he is on his way, if Inside Delivery has been specified. If you need more notice in order to be prepared for the delivery, select Delivery Appointment.

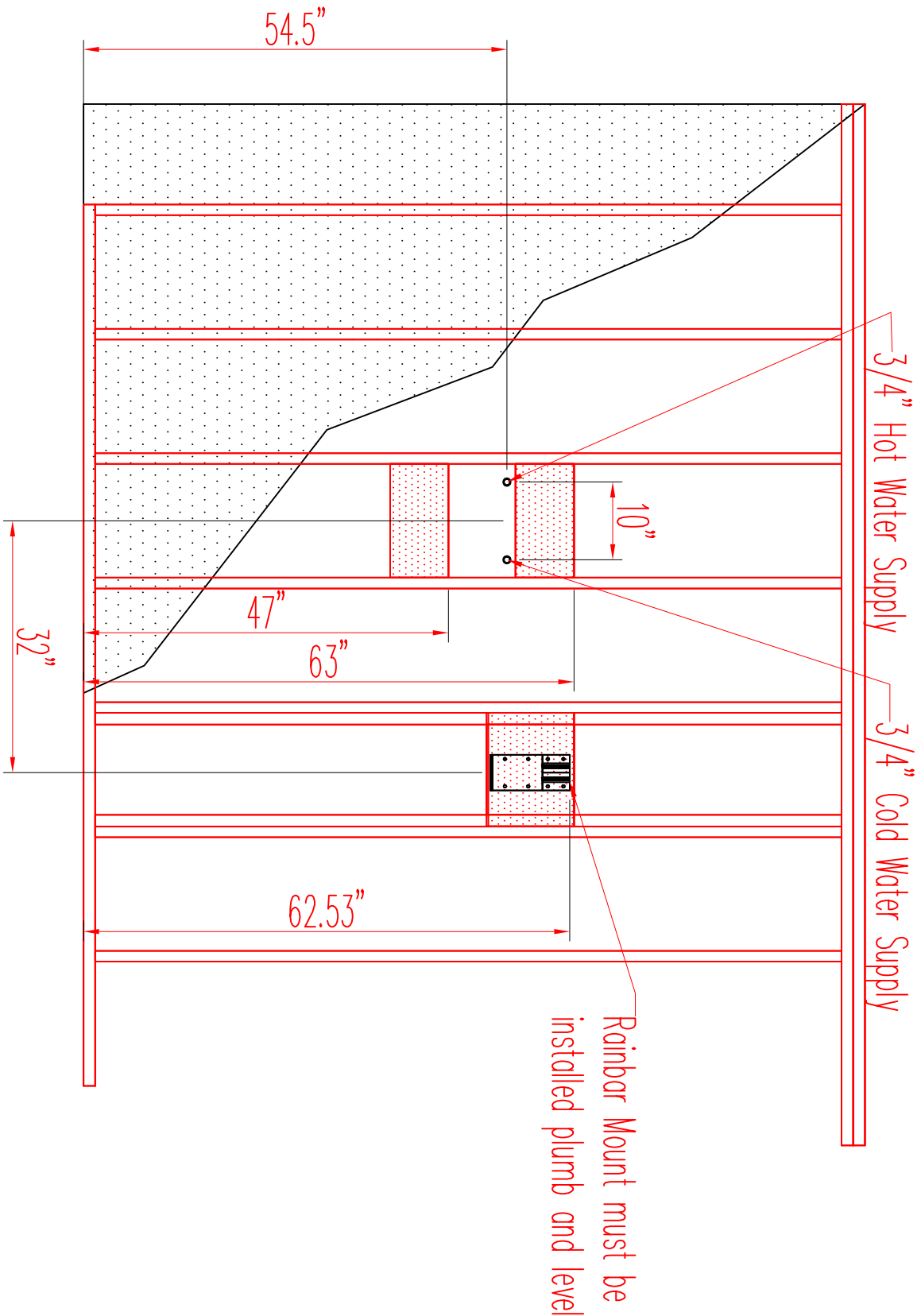
www.TouchAmerica.com
 (800) 678-6824 · (919) 732-6968



Water Consumption Information for TouchAmerica's Vichy Shower

Model name/product code	QTY	# of 1.8 gpm heads	Mixing valve max flow (gpm)	Used minutes per hour	% of hour used	Gallons used per treatment	Gallons mixed water demand per hour	% Hot	Gallons 140° F water demand per hour	% Cold	Gallons 58° F water demand per hour	Result temp. (°F)
Vichy 22003-0100	1	8	17	19.0	31.7%	323	323	51.95%	167.80	48.05%	155.20	100.6

December-16



General Notes

Rough-in dimensions for TouchAmerica Vichy Shower Rev 4.

To be used in conjunction with installation instructions for Vichy Shower Rev 4

Failure to install blocking and plumbing per dimensions and instructions may result in installation not being watertight or harmful use of product.

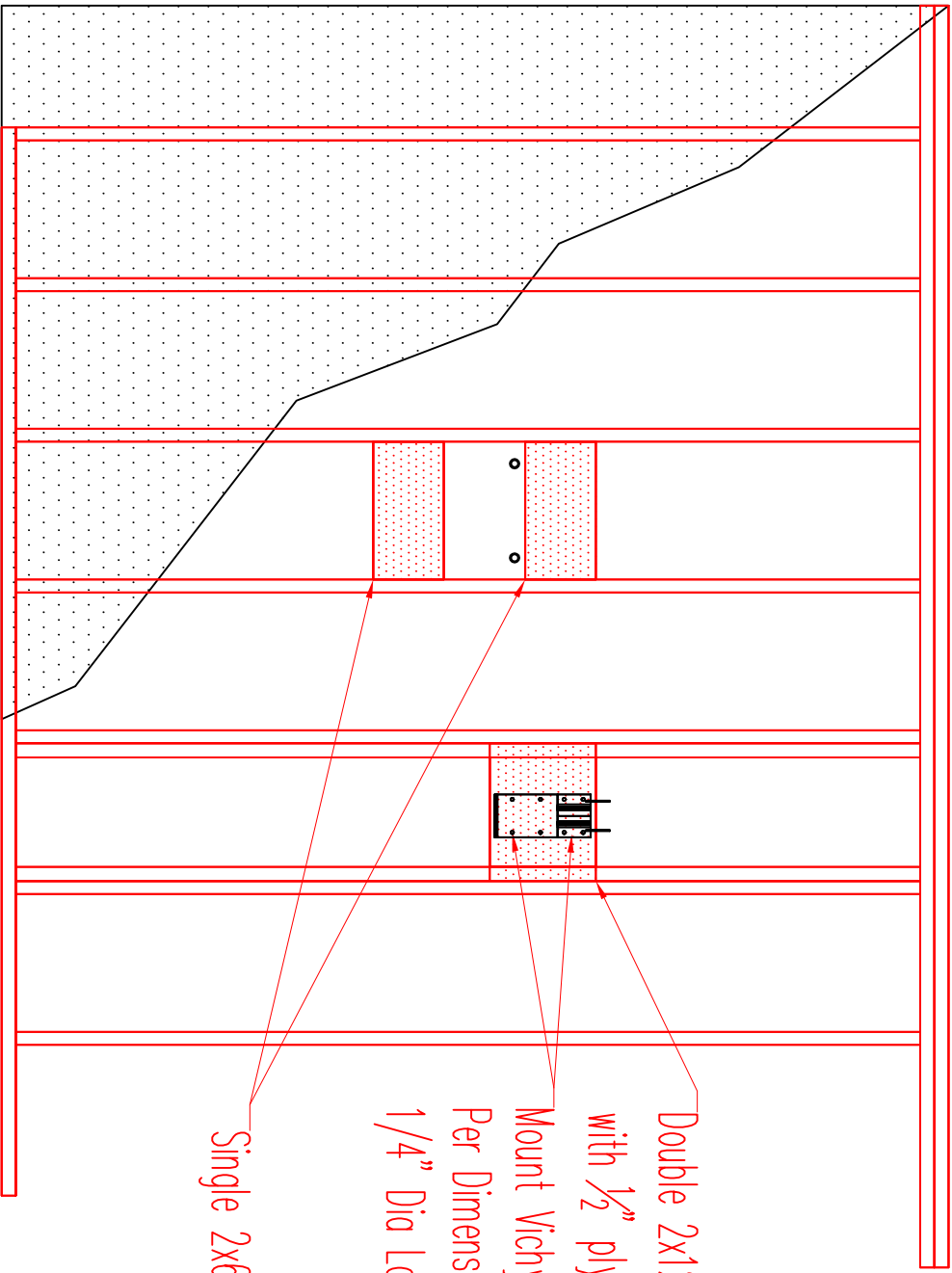
Contact TouchAmerica Technical Service for support 919-732-6968

No.	Revision/Issue	Date
	Rev 4	

Print Name and Address
 TouchAmerica, Inc
 PO Box 1394
 Hillsborough, NC 27278
 919-732-6968

Print Name and Address
 HydroKinetic
 Vichy Shower
 Rough-In Sheet
 Elevation

Product	Model



Double 2x12 Blocking
 with 1/2" plywood
 Mount Vichy Rainbar Hardware
 Per Dimensions using
 1/4" Dia Lag Bolt
 Single 2x6 Blocking

General Notes
 Rough-in dimensions for
 TouchAmerica Vichy
 Shower Rev 4.

To be used in
 conjunction with
 installation instructions
 for Vichy Shower Rev 4

Failure to install
 blocking and plumbing per
 dimensions and
 instructions may result in
 installation or harmful
 use of product.

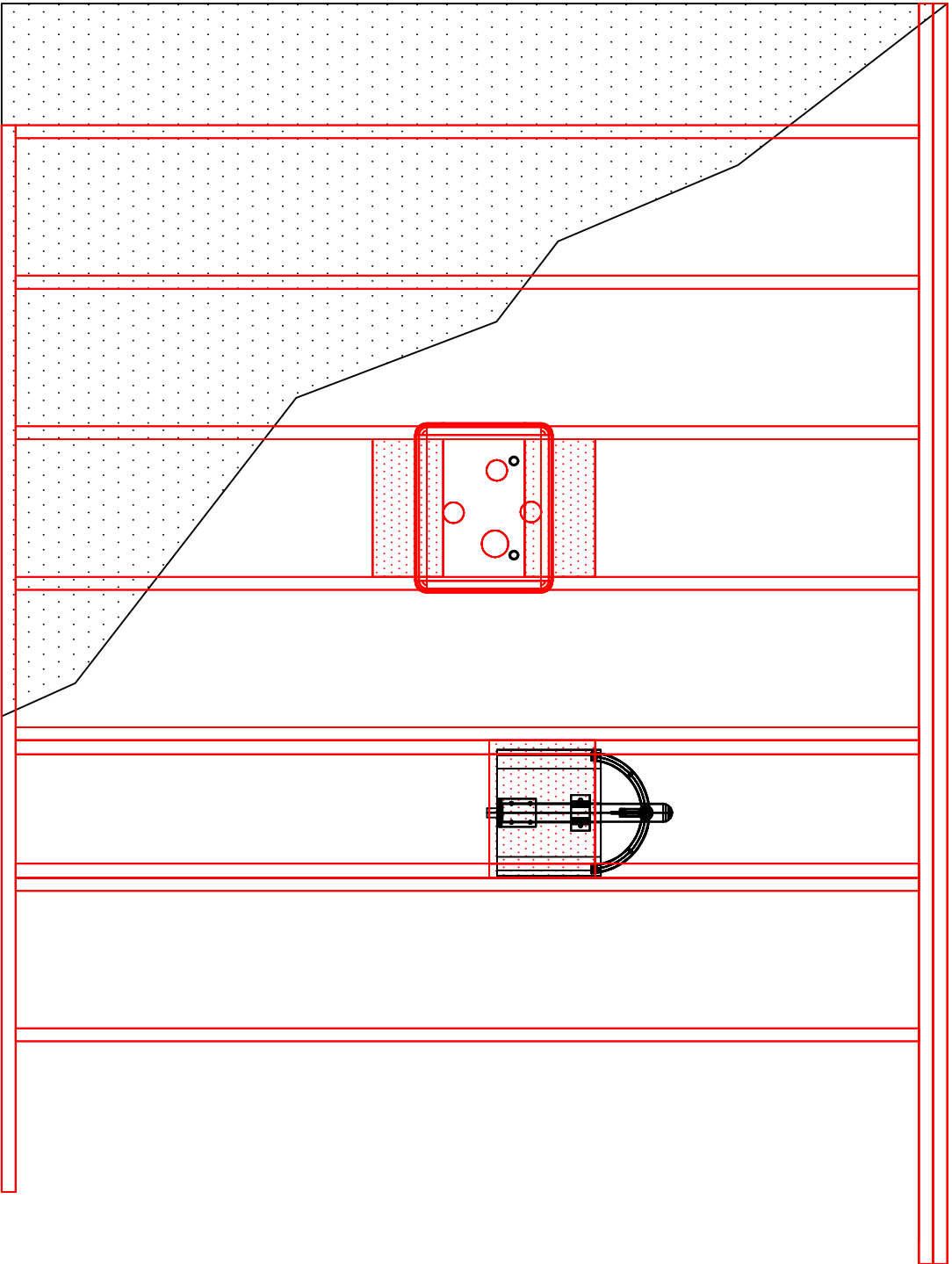
Contact TouchAmerica
 Technical Service for
 support 919-732-6968

No.	Rev 4	Date
Revision/Issue		Date

Print Name and Address
 TouchAmerica, Inc
 PO Box 1394
 Hillsborough, NC 27278
 919-732-6968

Print Name and Address
 HydroKINETIC
 Vichy Shower
 Rough-In Sheet
 Elevation

Product	Model
Part	
Serial	



General Notes
 Rough-in dimensions for
 TouchAmerica Vichy
 Shower Rev 4.

To be used in
 conjunction with
 installation instructions
 for Vichy Shower Rev 4

Failure to install,
 blocking and plumbing per
 dimensions and
 instructions may result in
 installation that is not
 safe, effective, or harmful
 use of product.

Contact TouchAmerica
 Technical Service for
 support 919-732-6968

No.	Revision/Issue	Date
	Rev 4	

Print Name and Address
 TouchAmerica, Inc
 PO Box 1304
 Hillsborough, NC 27278
 919-732-6968

Print Name and Address
 HydroKinetic
 Vichy Shower
 Rough-In Sheet
 Elevation

Product	Model