

CONTENTS

Contents	1 - 2
Safety Precautions	3 - 5
Getting Started	6 - 7
Parts Diagrams	8 - 9
Spray Patterns	10 - 11
Spraying Techniques	11 - 12
Cleaning and Maintenance	13 - 14
Troubleshooting	15 - 17
Warranty Information	18
Notes	19 - 20
CE Declaration	Back Cover

4000 SERIES T-PRO INSTRUCTIONAL MANUAL

Thank you for purchasing your Tanning System with T-PRO Model Applicator. This product has been designed to provide an efficient application of tanning solution products. Please read this user manual to understand how to operate your T-PRO Tanning system and you will be able to accomplish a flawless tan with every application.

Your T-PRO System is packaged with the following:

- 1) Turbine (Either a miniTAN™ or salonTAN™)
- 2) Air Hose
- 3) T-PRO Applicator
- 4) Power Cord
- 5) Instruction Manual
- 6) Cleaning Brush and Wrench

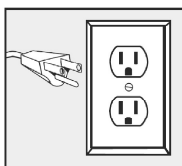
Please read these instructions carefully before using the equipment



GROUNDING

This appliance must be grounded. If it should malfunction or break down, grounding provides a path of least resistance for electric current to reduce the risk of electric shock. This appliance is equipped with a cord having an equipment-grounding conductor and grounding plug. The plug must be inserted into an appropriate outlet that is properly installed and grounded in accordance with all local codes and ordinances.

This appliance is for use on a nominal 120-volt circuit and has a grounding attachment plug that looks like the plug illustrated. Make sure that the appliance is connected to an outlet having the same configuration as the plug.



Please Note* For UK, Australia, Asia etc. your voltage will be 220-240v. Check the label on the base of the turbine to ensure your unit is at the correct voltage for your location.



ELECTRIC SHOCK HAZARD

Improper connection of the equipment grounding conductor can result in the risk of electric shock.

- Check with a qualified electrician or service person if you are in doubt as to whether the outlet is properly grounded.
- Use only a 3-wire extension cord that has a 3-blade grounding plug and a 3-slot receptacle that accepts the plug on the product.
- An undersized cord results in a drop in line voltage and loss of power and overheating.
- Do not modify the plug provided with the appliance. If it will not fit the outlet, have a proper outlet installed by a qualified electrician.
- To reduce the risk of electric shock or injury, do not expose to rain.
- Never allow unit to freeze.
- Always store the unit inside in a dry location. Store on the floor if in a basement setting.
- The operator must wear shoes and the floor must not be wet.



FIRE AND EXPLOSION HAZARD

Turbine must not be used in an area contaminated by volatile or flammable materials since sparking can be expected in the normal operation of the motor. This could ignite the contaminants causing a dangerous explosion.

- Do not spray flammable or combustible materials near an open flame or sources of ignition such as cigarettes, motors, and electrical equipment.
- Keep spray area well-ventilated. Keep a good supply of fresh air moving through the area. Keep turbine in a well ventilated area.
- Do not spray turbine.
- Do not smoke in the spray area.
- Do not operate light switches, engines, or similar spark producing products in the spray area.
- Keep area clean and free of flammable materials.
- Fire extinguisher equipment shall be present and working.
- Turn off and disconnect power cord before servicing equipment.
- Ensure ground prongs are intact on sprayer and extension cords.
- Never use 1,1,1-trichloroethane, methylene chloride, other halogenated hydrocarbon solvents or fluids containing such solvents in equipment with aluminum wetted parts. Such use could result in a serious chemical reaction, with the possibility of explosion. Consult your fluid suppliers to ensure that the fluids being used are compatible with aluminum parts.



TOXIC FLUID OR FUMES HAZARD

Toxic fluids or fumes can cause serious injury or death if splashed in the eyes or on skin, inhaled, or swallowed.

- Always wear appropriate gloves and eye protection.
- Always wear a mask. Read all instructions of the respirator or mask to ensure that it will provide the necessary protection against the inhalation of harmful vapors. Please also check with the local jurisdiction.
- Tanning Solution and other materials may be harmful if inhaled.



EQUIPMENT MISUSE HAZARD

Misuse of equipment can cause serious injury or death.

- Do not operate or spray near children. Keep children away from equipment at all times.
- Do not overreach or stand on an unstable support. Keep effective footing and balance at all times.
- Stay alert and watch what you are doing.
- Do not operate the unit when fatigued or under the influence of drugs or alcohol.
- Do not kink or over-bend the hose.
- Do not use the hose as a strength member to pull or lift the equipment.
- Do not cover turbine case as this will restrict air to the intake and result to overheating and premature failure of the motor.
- Do not carry turbine while spraying.
- Check the hose, hose connectors and power cord daily. Any worn or damaged parts should be replaced immediately.
- Use only genuine Fuji Spray replacement parts.
- Never place the Turbine up high, doing so can cause unnecessary overheating.
- Under no circumstances should you open the Turbine Case. Except for filter cleaning or filter replacement, there is NO maintenance required for the Turbine unit. If there is any malfunction, unplug the unit and call Fuji Spray for technical assistance.



Prop 65 Warning for California Residents

WARNING: This product may contain chemicals known to the State of California to cause cancer, birth defects, or other reproductive harm.

GETTING STARTED

HOSE CONNECTION

Connect the end of the Hose (female connector) to the Turbine Air Outlet located on the front of the Turbine. This is a simple threaded connector. Finger tight is enough – it is not necessary to use a wrench. This must not be over tightened.

The Hose is equipped with a brass Quick-Connect Coupler for easy attachment to the Applicator. To attach Applicator to the hose, slide back the Collar on the brass Quick-Connect Coupler (See Figure 1).

Insert the Male Fitting at the base of the Handle on the Applicator into this Quick-Connect and release the Collar. You should feel the fitting click into place.



Figure 1

To remove the Applicator from the Hose, pull back the Collar – this allows the Applicator to be removed easily.

TURBINE

The Turbine has been designed and built with a Breaker Switch. This essential component will switch the turbine off in the event that there is overheating or electrical malfunction. To avoid any overheating, ALWAYS ensure that Filter(s) are in place and clean, and that the Air Hose is NEVER kinked.



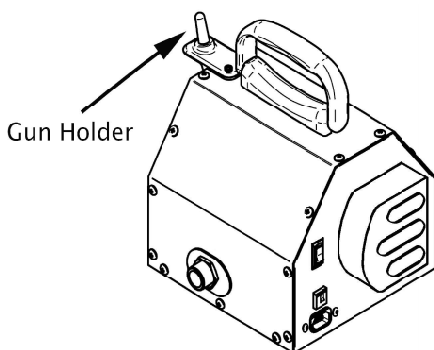
It is normal for the turbine air outlet (manifold) to become hot during use, please allow your Turbine to cool for a few minutes before removing the hose from the turbine manifold.

NOTE: The salonTAN™ Turbine has only one filter (part # 5029), and the miniTAN™ Turbine has two filters (part # 4009-2).

GUN HOLDER INSTALLATION

The two holes on the top of the holder require the black screws and washers included with this hardware. These screws fit into Threaded Inserts in the Metal Case. Do not overtighten – snug is fine.

The single Silver-Colored Screw must be installed to the single side hole of the Gun Holder. Once again, please do not overtighten this screw – snug is fine.



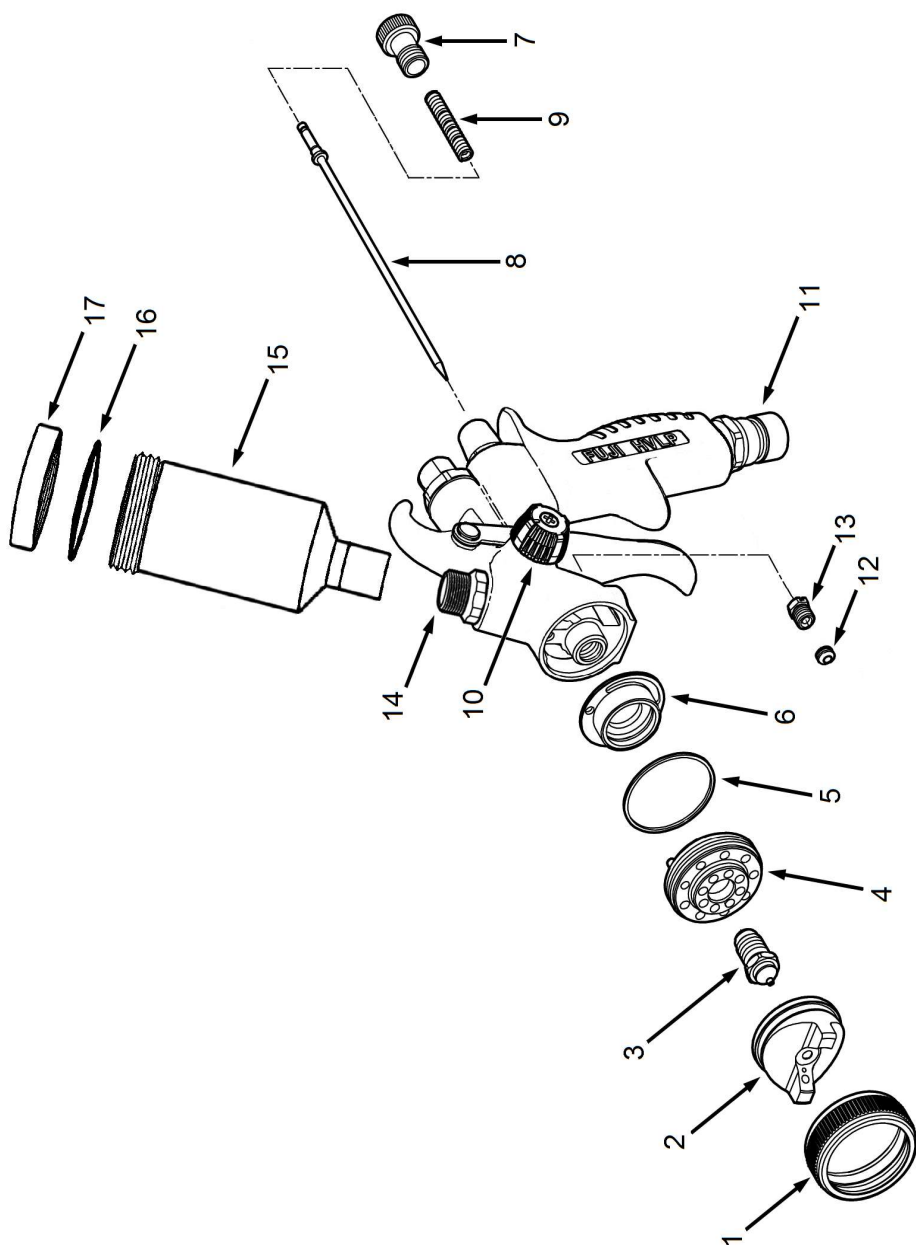
GUN HOLDER USE

Place the Hose Connector #11 (base of the Applicator's Handle) over the shaft of the Gun Holder shown in above illustration. Please ensure it is fully set down to the base of the shaft. The Applicator will now sit stationary. The Applicator can be left on the Holder for any length of time. It is a convenient resting place between spray tans.

APPLICATOR

Your Fuji Spray® Tanning Applicator has been adjusted at the factory and is ready for spraying. To clean out any impurities that may have accumulated during assembly or shipping, we recommend spraying a small quantity of water through the Applicator. Before tackling any spray tanning, we suggest you experiment with plain water until you become familiar with all the controls.

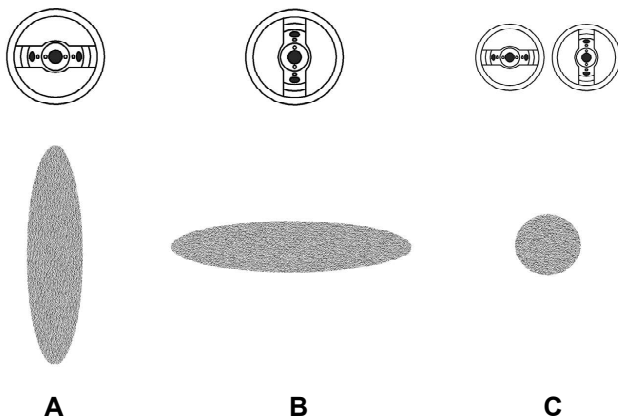
T-PRO GRAVITY APPLICATOR



ITEM	PART	NAME	ITEM	PART	NAME
1	5201	Collar	10	5225	Pattern Control Knob
2	5202	Aircap	11	5229	Hose Connector*
3	5203	Fluid Nozzle	12	5209	Needle Packing
4	5204	Air Diffuser	13	5210	Needle Packing Nut
5	5205	Diffuser Seal	14	5211	Fluid Coupler*
6	5207	Air Divider with Seal (5206)	15	8245T	3oz. Teflon Gravity Cup
7	5221	Fluid Knob	16	8181ST	Gasket
8	5219	Needle	17	8088	Cup Lid
9	5220	Needle Spring			

Parts indicated with * are not removable.

SPRAY PATTERNS



- A.** This pattern is used when spraying from side to side.
- B.** This pattern is used when spraying up and down.
- C.** This pattern is used for touch ups.

In order to set your Applicator to a specific spray pattern, loosen the Collar #1, turn the Aircap #2 to the desired position. To lock it in position, tighten the Collar #1 clockwise until it stops turning. Always make sure the Collar is snug tight.

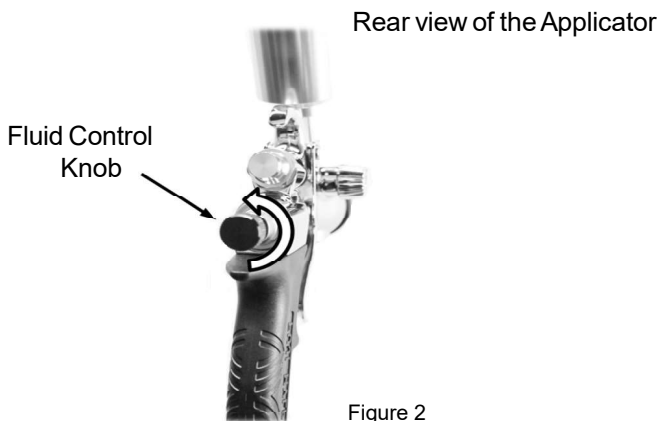
Setting the Aircap in a vertical position – B diagram above produces a horizontal spray pattern. This pattern is the most useful and simplest pattern shape for spray tanning. We recommend that you set and leave the Aircap in this position.

For spray tanning, the general setting is about 4 inches wide from 6 inches distance away. This is a personal preference. If you turn the fan pattern to a round spray pattern you will have to reduce the amount of tanning solution by turning the Fluid Knob #7. If you do not do this, you will get runs. You can use this much smaller pattern to “touch up” areas such as bikini strap lines or to enhance certain areas such as the abdominals. For best results, hold the Applicator closer to your subject (as close as 1 inch or less).

To set the fluid output, turn the Fluid Knob #7 clockwise until you cannot pull the Trigger. DO NOT over-tighten this Fluid Knob as this will cause damage to the end of the Needle.

Then unscrew it a little until a small amount of solution is released from the Nozzle when you press the trigger. Once you set the solution to your liking, you can leave it in this position.

Always remember that if there is not enough solution, you can turn the Fluid Knob counter-clockwise for more output (See Figure 2).



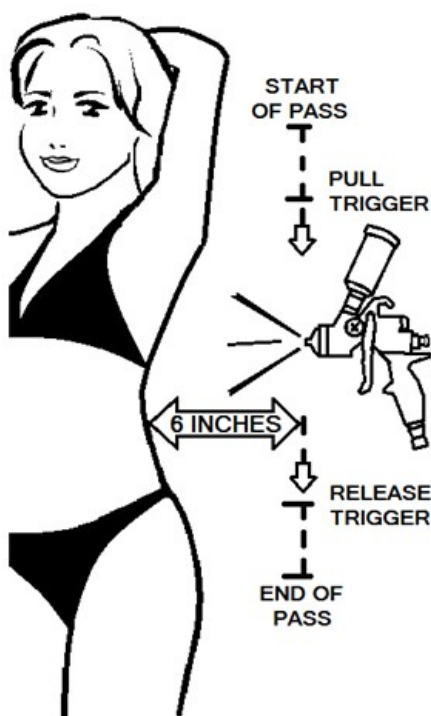
SPRAYING TECHNIQUES

When spraying, move the Applicator at a medium, steady speed, keeping the distance of the Applicator the same throughout the spray application. Always keep the Applicator as close to a vertical position as possible when spraying.

Always keep the gravity cup as close to vertical as possible. Pointing the Applicator too far upwards on an angle may cause the liquid to cease flowing temporarily.

Never lay the Applicator on its side – liquid will run out of the gravity cup. Instead, use the gun holder.

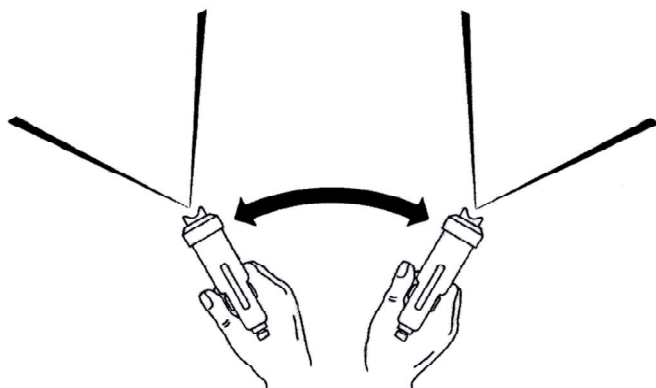
If you wish to change the direction of the spray pattern, rotate the position of the Aircap rather than tilting the Applicator to its side.



Start moving the Applicator in the direction you are going to spray before pressing the Trigger. The Trigger must be pulled immediately after you begin to move. This is the secret of avoiding runs. Never start spraying without having your hand in motion. Overlap each successive pass by about one third the size of the spray pattern (2 inches). This will result in even coverage.

Always keep applicator perpendicular to the person you are spraying. For spray tanning, the horizontal spray pattern will give the best results, reduce overspray and shorten spraying time. Always use vertical passes to make it easy on your spraying technique.

INCORRECT



CLEANING AND MAINTENANCE

Applicator:

Tanning solution should not be left in the cup overnight. It dries and hardens leaving a film throughout the fluid passages. Over time, the fluid passages can become clogged. To prevent this, spray soapy water through the Applicator periodically. Always keep the applicator clean and dry for next spray. It is important to clean the Applicator daily.

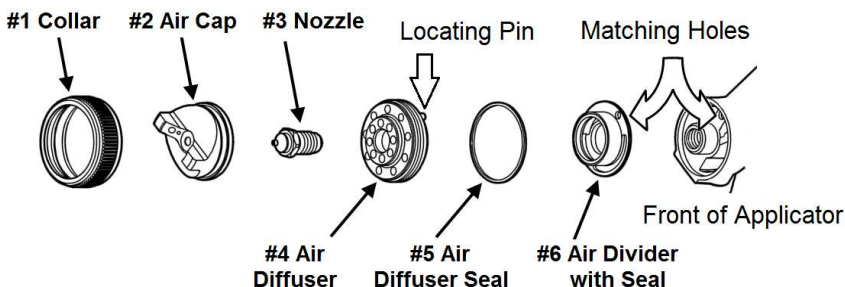
- 1) Unscrew the lid from the solution cup.
- 2) Pour any unused Tanning Solution into storage container.
- 3) Rinse the solution cup and then fill it with clean warm water.
- 4) Re-attach the lid of the solution cup. Without removing it, turn out the Fluid Knob #7 (this will allow you to pull back the Trigger all the way).
- 5) Simply pull the Trigger back and aim the stream of water into a receptacle. Repeat once more if necessary.
- 6) Use a wet rag to wipe off any solution on the Applicator or Cup.
- 7) The Lid of the solution cup has a pinhole in the center. Always ensure that the pinhole is open. Keep this area clean regularly.

This is all that is needed to keep the Applicator clean and ready for use. For extra cleaning, add a small drop of dish washing liquid on the first flush, but always follow this by flushing with clean water. NEVER use any abrasive cleaning material like steel wool or any solvent to clean the Applicator.

For a more thorough cleaning, remove the following parts:

- Remove the Fluid Knob #7, Spring #9, Needle #8 from the rear of the Applicator.
- At the front of the Applicator, remove Collar #1 and Aircap #2.
- Using the supplied wrench, remove the Fluid Nozzle #3. To prevent the air Diffuser #4 and Diffuser Seal #5 from falling out when removing the Fluid Nozzle, have the Applicator pointing upwards.
- Use the Cleaning Brush and warm soapy water to clean behind the Fluid Nozzle #3.
- The Air Cap, Fluid Nozzle, Needle, Air Diffuser and Air Divider may be soaked in warm soapy water. Do not use solvents to soak or clean these components.
- When reinstalling the Air Diffuser, carefully rest the Diffuser Seal on the back edge of the Diffuser, this will ensure that the alignment is perfect.

-There is a Locating Pin on the back side of the Diffuser. This pin must be placed into the matching hole in the Air Divider #6, and into another matching hole in the Gun Body. This matching hole of the Gun Body is located at a 12 o'clock position.



DO NOT SOAK THE WHOLE APPLICATOR IN ANY LIQUID – THIS IS NEVER NECESSARY OR ADVISABLE.

Maintenance of the Turbine:

The only maintenance required on the Turbine is the cleaning and replacing of the Filter(s). All fujisprayTAN Turbine Filters are friction fit and must fill the entire enclosure of its filter housing. Depending on the model, the Turbine has one or two Filters, they are either removed from the sides of the machine or underneath. To clean the filter, wash in warm soapy water, let dry before replacing it back to the Turbine.

Never replace a Filter when wet.

Cleaning your filters regularly is essential to maintaining your Turbine. It is always a good idea to have a spare pair of filters on hand.

Turbine Filter part numbers:

- miniTAN Turbine (**square shape filters**) - Part # 4009-2

NOTE: If you have the miniTAN Turbine, the fine filter is installed to the left side and the coarse to the right side (as seen looking at the front of the Turbine where the hose is connected).

- miniTAN PLATINUM Turbine (**semi-circle shape filters**) Part # 7224-2

- salonTAN and salonTAN PLATINUM Turbine filter - Part # 5029

When storing the Turbine, always store the system in a dry location. Store off the floor if in a basement setting.

TROUBLESHOOTING

1) Solution coming out from nozzle without operating

- Check and clean Fluid Nozzle #3. If damaged, it will require replacement.
- Check and clean the Needle #8. If damaged, it will require replacement.

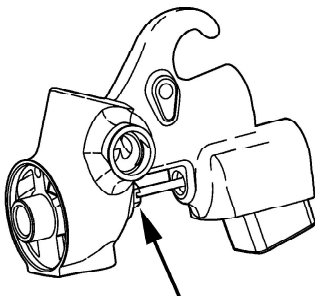
The Needle Packing Nut is too tight. It needs to be a bit loosened:

- Half fill the solution cup with water.
- Ensure that the Applicator is disconnected from the hose, and the Turbine is switched off.
- Pull the Trigger and release. Check Fluid Nozzle #3 for water spurting out.
- Use the supplied wrench to **GENTLY** loosen the Nut (1 or 2 degrees only at a time). This is a very sensitive adjustment. Again pull the Trigger and release until the Needle moves back and forth freely.
- Wipe away the water in between adjustments. Repeat until no water is seen at the Fluid Nozzle Hole

2) Leaking from Needle Packing Nut

The Needle Packing Nut #13 is too loose. It needs to be tightened:

- Half fill the solution cup with water.
- Ensure that the Applicator is disconnected from the hose and the Turbine is switched off.
- Use the supplied wrench to **GENTLY** tighten the needle packing nut 1 or 2 degree only. This is a very sensitive adjustment.
- Wipe away the water in between adjustments. Repeat until no water is seen where the Needle passes through Needle Packing Nut.



Needle Packing Nut

3) Heavy density or light density spray

- Adjust the Fluid Knob #7 to increase or decrease volume.
- Vary distance between the Applicator and the person you are spraying.

4) Uneven pattern when spraying

- Check and clean Nozzle #3.
- Check and clean Air Cap #2. Use a soft cleaning brush. Never use metal objects to clean holes in the Air Cap.

5) Poor Spray Pattern

- Damaged Needle #8 or Fluid Nozzle #3 – This will require replacement.
- Check Fluid Nozzle and Air Holes in Air Cap #2– Will require cleaning.
- Applicator too far from surface (max. 6 inches away from surface).

6) Uneven coat on surface

- Ensure you are spraying a wet enough spray to coat the surface of the body evenly.
- Check and clean the Nozzle #3. If damaged, it will require replacement.

7) Excessive overspray

- Applicator is being held too far away – 6 inches max. (15cm).
- Trigger on and off as you pass over the edge.
- Install an extraction fan**

****Please check with your local jurisdiction on this matter.**

8) Leaking from the Solution Cup Rim

- Ensure that the Cup is tightened fully.
- Replace Cup Lid Seal (Gasket), it may be worn. Please order from your supplier. The part number would be 8181ST-3.

9) Fluid at the Air Cap Holes

- The Fluid Nozzle #3 is loose and material is leaking around it – tighten the Nozzle using a Wrench.

10) Applicator Sprays in a pulsating manner

- The Needle Packing has worn a little or is loose. Tighten the Needle Packing Nut #13. Gently tighten the Needle Packing Nut 1 or 2 degrees only. This is a very sensitive adjustment. Repeat until no water is seen where Needle passes through the Needle Packing Nut.
- The Solution Cup is almost empty. Add more solution.
- Clean the Fluid Coupler #14 thoroughly.

11) Turbine keeps shutting off at the breaker switch

- Check the Filter(s) is clean and in place properly.
- Check the Air Hose for any kinks that may restrict air flow.
- The Turbine is overheating due to over usage. Please leave the Turbine off for a few minutes to cool down. If necessary, reset the breaker switch, then try turning it on again.

12) Less solution coming out/ No flow

- Fluid Knob #7 is turned in too far – turn Fluid Knob counter clockwise to allow more Solution flow.
- Fluid Coupler #14 is clogged:
 - Remove the Cup Assembly
 - Use the supplied cleaning brush to unclog the inside of the Fluid Coupler with soapy water.
 - Use the brush to also clean out the solution passage at the bottom of the Cup.

Fuji Limited 2 Year Warranty

Fuji Industrial Spray Equipment Ltd. ("Fuji") provides a 24 month limited warranty on the product to the original purchaser effective from the date of purchase against defects in materials and workmanship.

The warranty does not cover damage or defects arising as a result of abuse, misuse, accident, negligence, malfunction, corrosion, normal wear and tear, inadequate or lack of spray gun or other aspects of maintenance of the product, damage arising from improper assembly, installation or operation, or damage arising from the product being used for a purpose other than that for which it was designed or intended. The warranty is void if repairs to the product are made or attempted by anyone other than Fuji or its authorized agent, or if any modifications to the product are made or attempted.

Purchasers located in North America must obtain a Return Material Authorization number by calling Fuji at 1-800-650-0930 before returning the product to Fuji or its designated representative.

Purchasers located outside North America must contact the vendor from which they purchased the product. In all instances purchasers must return the product together with proof of purchase and with shipping prepaid. For valid warranty claims the product will be returned to the purchaser with shipping prepaid.

This is the only warranty provided by Fuji with respect to the product and is in lieu of any other warranties, express or implied, including but not limited to any warranty of merchantability or fitness for a particular purpose. Fuji's sole obligation under this warranty shall, at its option, be to either repair or replace a product determined by Fuji to be defective. In no event shall Fuji be liable for loss or profits, incidental or consequential damages, injury to any person or property, or any other damages of whatsoever nature.

NOTES

NOTES