



miniTAN and salonTAN



Contents

Safety Precautions	2 - 4
Getting Started.....	4 - 5
Spray Pattern	5
Pattern Size	6
Spraying Techniques.....	6 - 7
Maintenance of the Turbine	7
Cleaning	8
Clogging	9
Adjusting Needle Packing	10
Spray Gun Problems	11 - 12
Gun Holder.....	13
Parts Diagrams	14 - 15
Warranty Information	16
CE Declaration.....	17



hvlpTAN LITE and hvlpTAN GLO



Contents	18
Safety Precautions	19
Getting Started.....	20 - 21
Parts and Descriptions.....	22 - 23
Spray Patterns.....	24 - 25
Spraying Techniques.....	25 - 26
Cleaning and Maintenance	27 - 28
Troubleshooting.....	28 - 31
Warranty Information	32
CE Declaration.....	Back Cover

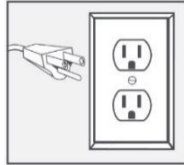
Please read these instructions carefully before using the equipment



GROUNDING

This appliance must be grounded. If it should malfunction or break down, grounding provides a path of least resistance for electric current to reduce the risk of electric shock. This appliance is equipped with a cord having an equipment-grounding conductor and grounding plug. The plug must be inserted into an appropriate outlet that is properly installed and grounded in accordance with all local codes and ordinances.

This appliance is for use on a nominal 120-volt circuit and has a grounding attachment plug that looks like the plug illustrated. Make sure that the appliance is connected to an outlet having the same configuration as the plug.



Please Note* For UK, Australia, Asia etc. your voltage will be 220-240v. Check the label on the base of the turbine to ensure your unit is at the correct voltage for your location.



ELECTRIC SHOCK HAZARD

Improper connection of the equipment grounding conductor can result in the risk of electric shock.

- Check with a qualified electrician or service person if you are in doubt as to whether the outlet is properly grounded.
- Use only a 3-wire extension cord that has a 3-blade grounding plug and a 3-slot receptacle that accepts the plug on the product.
- An undersized cord results in a drop in line voltage and loss of power and overheating.
- Do not modify the plug provided with the appliance. If it will not fit the outlet, have a proper outlet installed by a qualified electrician.
- To reduce the risk of electric shock or injury, do not expose to rain.
- Never allow unit to freeze.
- Always store the unit inside in a dry location. Store on the floor if in a basement setting.
- The operator must wear shoes and the floor must not be wet.



FIRE AND EXPLOSION HAZARD

Turbine must not be used in an area contaminated by volatile or flammable materials since sparking can be expected in the normal operation of the motor. This could ignite the contaminants causing a dangerous explosion.

- Do not spray flammable or combustible materials near an open flame or sources of ignition such as cigarettes, motors, and electrical equipment.
- Keep spray area well-ventilated. Keep a good supply of fresh air moving through the area. Keep turbine in a well-ventilated area.
- Do not spray turbine.
- Do not smoke in the spray area.
- Do not operate light switches, engines, or similar spark producing products in the spray area.
- Keep area clean and free of flammable materials.
- Fire extinguisher equipment shall be present and working.
- Turn off and disconnect power cord before servicing equipment.
- Ensure ground prongs are intact on sprayer and extension cords.
- Never use 1,1,1-trichloroethane, methylene chloride, other halogenated hydrocarbon solvents or fluids containing such solvents in equipment with aluminum wetted parts. Such use could result in a serious chemical reaction, with the possibility of explosion. Consult your fluid suppliers to ensure that the fluids being used are compatible with aluminum parts.



TOXIC FLUID OR FUMES HAZARD

Toxic fluids or fumes can cause serious injury or death if splashed in the eyes or on skin, inhaled, or swallowed.

- Always wear appropriate gloves and eye protection.
- Always wear a mask. Read all instructions of the respirator or mask to ensure that it will provide the necessary protection against the inhalation of harmful vapors. Please also check with the local jurisdiction.
- Tanning Solution and other materials may be harmful if inhaled.



EQUIPMENT MISUSE HAZARD

Misuse of equipment can cause serious injury or death.

- Do not operate or spray near children. Keep children away from equipment at all times.
- Do not overreach or stand on an unstable support. Keep effective footing and balance at all times.

- Stay alert and watch what you are doing.
- Do not operate the unit when fatigued or under the influence of drugs or alcohol.
- Do not kink or over-bend the hose.
- Do not use the hose as a strength member to pull or lift the equipment.
- Do not cover turbine case as this will restrict air to the intake and result to overheating and premature failure of the motor.
- Do not carry turbine while spraying.
- Check the hose, hose connectors and power cord daily. Any worn or damaged parts should be replaced immediately.
- Use only genuine Fuji Spray replacement parts.
- Never place the Turbine up high, doing so can cause unnecessary overheating.
- Under no circumstances should you open the Turbine Case. Except for filter cleaning or filter replacement, there is NO maintenance required for the Turbine unit. If there is any malfunction, unplug the unit and call Fuji Spray for technical assistance.

CA PROP 65 **Prop 65 Warning for California Residents**
65 **WARNING:** This product may contain chemicals known to the State of California to cause cancer, birth defects, or other reproductive harm.



GETTING STARTED

APPLICATOR

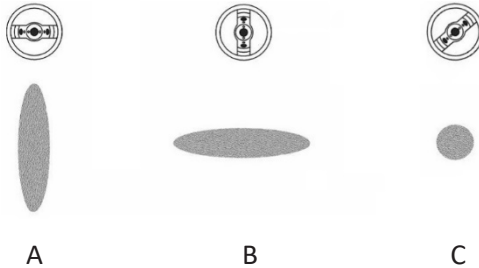
Your Fuji Spray® tanning Applicator has been adjusted at the factory and is ready for spraying. To clean out any impurities that may have accumulated during assembly or shipping, we recommend spraying a small quantity of water through the Applicator. Before tackling any serious spray tanning, we suggest you experiment with plain water until you become familiar with all the controls.

HOSE CONNECTION

Connect the end of the Hose (female connector) to the Turbine Air Outlet located on the front of the Turbine. This is a simple threaded connector. Finger tight is enough - it is not necessary to use a wrench. This Nut must not be overtightened.

To attach the Applicator to the Hose, slide back the Collar on the brass Quick-Connect Coupler. Insert the Male Fitting at the base of the Handle on the Applicator into this Quick-Connect and release the Collar. You should feel the fitting click into place. To detach, slide the Collar back – this allows the Applicator to be removed easily.

CHANGING THE SHAPE OF THE PATTERN



A) Loosen the Collar #1. Turn the Aircap #2 to the horizontal position. This setting produces a vertical spray pattern. Always make sure the Collar is snug tight.

B) Setting the Aircap in a vertical position produces a horizontal spray pattern. The horizontal fan pattern is the most useful and simplest pattern shape for spray tanning. **We recommend that you set and leave the air cap in this position.** To lock it in position, tighten the Collar #1 clockwise until it stops turning.

C) Turn the Pattern Control Knob #6. This knob adjusts the size of the fan pattern from large to small round. For spray tanning, the general setting is about 4" wide from 6" distance away. This is a personal preference. If you turn the fan pattern down to a round spray pattern you will have to reduce the amount of tanning fluid by turning the Fluid Knob #7. If you do not do this, you will get runs. You can use this much smaller pattern to 'touch up' areas such as bikini strap lines or to enhance certain areas such as the abdominals.

To set the fluid output, turn the Fluid Knob #7 clockwise until you cannot pull the trigger. Then unscrew it a little until a small amount of solution comes out of the nozzle when you depress the trigger. Once you set the fluid to your liking, you can leave it in this position. Always remember that if there is not enough fluid (tanning solution) you can turn the Fluid Knob counter-clockwise for more output.

ADJUSTING SIZE OF FAN PATTERN

As mentioned, the horizontal spray pattern is the most useful for spray tanning. For smaller fan pattern, turn the Pattern Control Knob #6 until you reach the desired width. Also, moving closer with the gun will produce a smaller fan.

The optimum spraying distance is 6 inches (15cm) from your subject. When you hold the tanning gun at this correct distance, the 4" (10cm) fan pattern is ideal for spray tanning. This would not necessarily apply if you were using the smallest round pattern to touch up small areas – in that case you would hold the gun much closer to the body (as close as 1 inch or 2.54cm) or less. For body parts thinner in width than 4" such as the arm and wrist, move the gun closer to the subject. This ensures that solution is not being wasted by spraying on either side of the wrist into midair. Spraying closer also reduces undesirable mist in the air.

SPRAYING TECHNIQUES

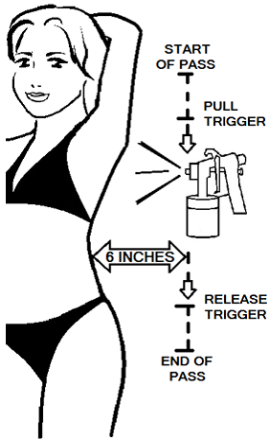
The Applicator should be held perpendicular to the surface at all times. At no time should the tanning gun be held more than 6" (15cm) away from the surface to be sprayed. All you must do is to move at the correct speed applying a thin wet coat to your client while keeping a uniform distance away.

CAUTION: ALWAYS KEEP THE CUP AS CLOSE TO VERTICAL AS POSSIBLE. POINTING THE APPLICATOR TOO FAR UPWARDS OR DOWNWARDS ON AN ANGLE MAY CAUSE THE TANNING SOLUTION TO ENTER THE CLEAR PLASTIC PRESSURE TUBE #18. CLOGGING THIS TUBE WILL RESTRICT FLUID FLOW THROUGH THE GUN.

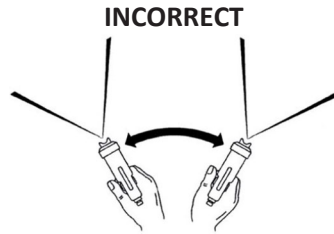
AFTER USE, NEVER LAY THE GUN ON ITS SIDE – LIQUID WILL RUN OUT OF THE CUP INTO THE PLASTIC PRESSURE TUBE. INSTEAD, USE THE SPRAY GUN HOLDER OR HANG THE GUN BY ITS HOOK.

Always keep the gun perpendicular to the person you are spraying. For spray tanning, the horizontal spray pattern will give the best results, reduce overspray and shorten spraying time. Always use vertical passes to make it easy on your spraying technique.

SPRAYING TECHNIQUES



Start moving the spray tanning gun in the up or down direction **before** pressing the Trigger. The Trigger must be pulled immediately **after** you begin to move. This is the secret to avoiding runs. Never start spraying without having your hand in motion. Overlap each successive pass by about one third the size of the spray pattern (2 inches or 5cm). This will result in even coverage.



MAINTENANCE OF THE TURBINE

The only maintenance required on the Turbine is the cleaning and replacing of the Filter(s). All fujsprayTAN Turbine Filters are friction fit and must fill the entire enclosure of its filter housing. Depending on the model, the Turbine has one or two Filters, they are either removed from the sides of the machine or underneath. To clean the filter, wash in warm soapy water, let dry before replacing it back to the Turbine.

Never replace a Filter when wet.

Cleaning your filters regularly is essential to maintaining your Turbine. It is always a good idea to have a spare pair of filters on hand.

Turbine Filter part numbers:

- miniTAN Turbine (**square shape filters**) - Part # 4009-2

NOTE: If you have the miniTAN Turbine, the fine filter is installed to the left side and the coarse to the right side (as seen looking at the front of the Turbine where the hose is connected).

- miniTAN PLATINUM Turbine (**semi-circle shape filters**) Part # 7224-2

- salonTAN and salonTAN PLATINUM Turbine filter - Part # 5029

When storing the Turbine, always store the system in a dry location. Store off the floor if in a basement setting.

CLEANING

To clean the Applicator after each use, remove the Cup from the Cup Assembly #17. Pour out any unused Tanning Solution then fill the cup with clean water. Re-attach the Cup and turn out the Fluid Knob #7 (this will allow you to pull the trigger back all the way). Attach the Gun to the Hose and simply pull the trigger and spray the water through the gun (into a rag is OK). Repeat once more if necessary. Then use a wet rag to wipe off any solution on the gun or cup. This is all that is needed to keep the Applicator clean and ready for use. For extra cleaning, add a small drop of dishwashing liquid on the first flush but always follow this by flushing with clean water. **Never** use any abrasive cleaning material like steel wool or any solvent to clean the fluid cup or Applicator.

CLEANING BEHIND THE FLUID NOZZLE

Remove the Collar #1 and Aircap #2.

Using the supplied Wrench, remove the Fluid Nozzle #3. Once the Fluid Nozzle #3 is removed it is relatively easy to clean behind it with the Cleaning Brush and soapy water. For a more thorough cleaning, remove all parts at the front of the barrel. (Collar, Aircap, Fluid Nozzle etc.) You may soak the parts in soapy water. Do not use solvents. Also, remove the Fluid Knob #7, Spring #9 and Needle Assembly #8 from the rear of the gun.

PLEASE DO NOT SOAK THE WHOLE APPLICATOR IN ANY LIQUID - THIS IS NEVER NECESSARY OR ADVISABLE.

CLOGGED GUN - THE FLUID COUPLER

If the Fluid Coupler #16 is seriously clogged with dried tanning fluid it must be cleaned while in place in the gun. **The Fluid Coupler #16 should never be removed.**

Remove the Cup Assembly by loosening the Nut at the top of the Assembly. Use the supplied Cleaning Brush to unclog the inside of the Fluid Coupler using soapy water. Replace the Cup. Before tightening, position the cup to the preferred position and tighten the Nut.

WHAT CLOGS THE FLUID PASSAGES?

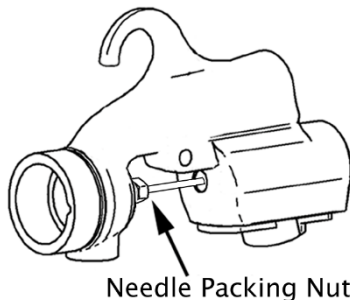
Tanning solution should not be left in the cup overnight. It dries and hardens leaving a film throughout the fluid passages. Over time, the fluid passages can become clogged. To prevent this, spray soapy water through the gun periodically. Always remember to spray clean water to flush out the soap before spray tanning.

A simple rule... If air can pass through the 90 Degree Fitting #4, through the Pressure Tube #18, into the Cup Assembly #17 and if fluid can flow through the Plastic Feed Tube up through the Fluid Coupler #16 and out the Fluid Nozzle #3 then the Applicator will spray **100%** of the time. If there is any restriction of Pressurizing Air or Fluid Flow, then the gun will not work properly. So it is all just keeping these passages - both Air and Fluid - free of any restriction.

LEAKAGE FROM THE NOZZLE

If liquid comes out of the Fluid Nozzle #3 **without** pulling back the trigger (Trigger at rest)...

- **The Needle Packing Nut #13 may be too tight** - see Page 10... Adjusting the Needle Packing Nut.
- The Needle Assembly #8 is not seating in the Fluid Nozzle #3 properly and the tip could be bent (unlikely).
- Foreign matter could be trapped between the point of the Needle #8 and Fluid Nozzle #3 (dried, hardened tanning solution) – clean with soapy water.



ADJUSTING THE NEEDLE PACKING

The Needle Packing Nut #13 is located behind the front barrel and in front of the Trigger. It is the **small** Nut with the Needle passing through the center of it. This Nut must be tight enough to prevent any leakage of liquid. It should however, allow the Needle to glide smoothly through it.

First of all, empty the Cup of all liquid. Wind out the Fluid Knob #7 a couple of turns. Then pull the Trigger back exposing the part of the Needle Shaft that enters the Needle Packing Nut. Apply light machine oil or Vaseline to the Needle Shaft and work it in and out by pulling the Trigger back and forth. This will lubricate the Needle Packing #12.

LEAKAGE FROM THE NOZZLE - REMEDY

This occurs when the Needle Packing Nut is too tight (compressing the Needle Packing #12 tightly around the Needle.

Half fill the cup with water. Attach the Gun to the Hose and turn on the Turbine blower.

Pull the Trigger and release. Check the Nozzle for water spurting out.

Using the supplied wrench, **GENTLY** loosen the Nut (1 or 2 degrees only at a time). **This is a very sensitive adjustment.** Again pull the Trigger and release. Wipe away the water in between adjustments. Repeat until no water is seen at the Nozzle Hole.

LEAKAGE FROM THE NEEDLE PACKING NUT

This occurs when the Needle Packing Nut is too loose.

Half fill the cup with water. Attach the Gun to the Hose and turn on the Turbine blower.

Using the supplied wrench, **GENTLY** tighten the Needle Packing Nut 1 or 2 degrees only. **This is a very sensitive adjustment.** Wipe away the water in between adjustments. Repeat until no water is seen where the Needle passes through the Needle Packing Nut.

SPRAY GUN PROBLEMS

NO LIQUID (OR VERY LITTLE LIQUID)

- **The most common cause of reduced liquid from the Nozzle is a clogged clear plastic Pressure Tube #18.**
Replace with new. Always ensure that the Tube is placed in the right direction. The pressurizing air flows from the Gun to the Cup. You should be able to blow through the Tube and determine which direction the air can flow. Installing this Tube in the wrong direction will result in no fluid flow.
- **The second most common cause of reduced liquid from the Nozzle is clogged 90 Degree Fitting at the Gun and/or the Nipple on the lid of the Cup.** Use a toothpick or wire paper clip to clean out the hole so air can flow freely.
- The Fluid Coupler #16 is clogged. Please see 'Clogged Gun' on Page 8. If no fluid is coming out of the Nozzle, the Cup Assembly must be removed and the inside of the Fluid Coupler cleaned out.
- To prevent clogs, spray slightly soapy water through the gun every night followed by water only.

UNEVEN SPRAY PATTERN

- One of the holes in the Aircap #2 may be blocked with dried tanning fluid. Remove the Aircap and clean by soaking in soapy water followed by using the soft bristle brush to clean. NEVER use metal objects to clean holes in the air cap.

LEAKING AT THE CUP RIM

- Ensure that the Cup is tightened fully. It is best to hold the lid while tightening the Cup.
- Replace the Cup Gasket #19.

LITTLE OR NO FLUID FLOW

- Fluid passages are clogged (or semi-clogged). See Page 9.
- Clear Plastic Pressure Tube #18 is clogged not allowing pressurizing air to the Cup.
- Fluid Knob #7 is turned in too far - turn out to allow more fluid flow.

THE TRIGGER IS SLUGGISH

- The Needle Packing Nut #13 is too tight – see ADJUSTING THE NEEDLE PACKING on Page 10.

LIQUID LEAKING FROM NEEDLE PACKING NUT

- The Needle Packing Nut #13 is too loose – see ADJUSTING THE NEEDLE PACKING on Page 10.

POOR SPRAY PATTERN

- Damaged Needle #8 or Nozzle #3 – replace.
- Nozzle #3 is clogged – clean.
- Air holes in Aircap #2 are clogged – clean.
- Applicator too far from surface (max. 6" - 15cm).

FLUID AT THE AIRCAP HOLES

- The Fluid Nozzle #3 is loose and material is leaking around it – tighten Nozzle with the supplied Wrench.

APPLICATOR SPRAYS IN A PULSATING MANNER

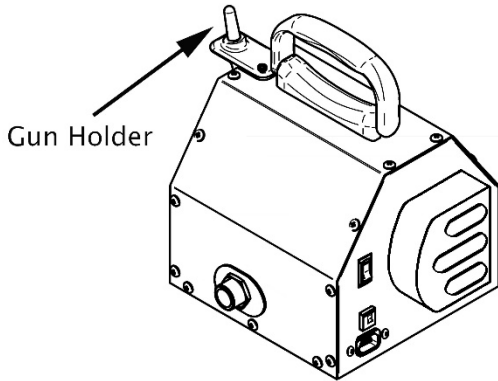
- The Needle Packing has worn a little or is loose. Tighten the Needle Packing Nut #13 GENTLY. See Page 10.
- The Cup is almost empty – add liquid.
- The Fluid Coupler #16 is semi-clogged – clean.

EXCESSIVE OVERSPRAY

- The gun is being held too far away – 6" max. (15cm).
- Trigger on and off as you pass over the edge.
- Install an extraction fan**.

****Please check with the local jurisdiction on this matter.**

GUN HOLDER



GUN HOLDER INSTALLATION

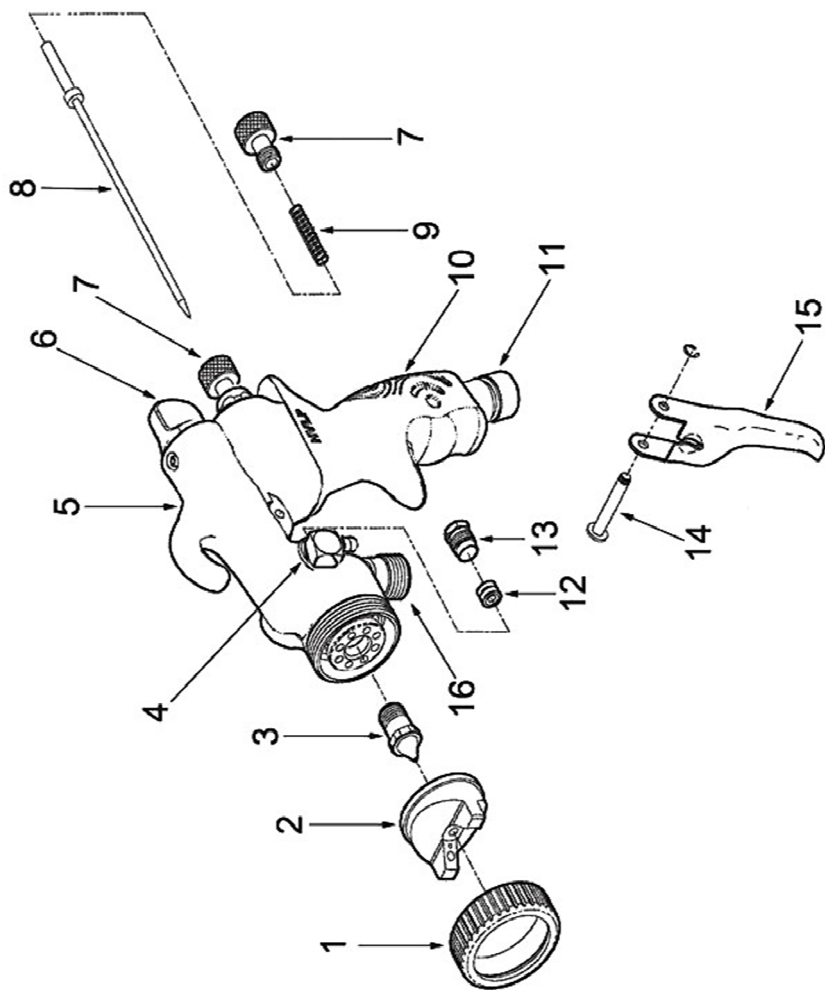
The 2 holes on the top of the holder require the Black Machine Screws and Washers. These screws fit into Threaded Inserts in the Metal Case. Do not overtighten - snug is fine.

The single Silver-Colored Screw must be installed to the single hole on the side of the Gun Holder. Once again, please do not overtighten this screw - snug is fine.

GUN HOLDER USE

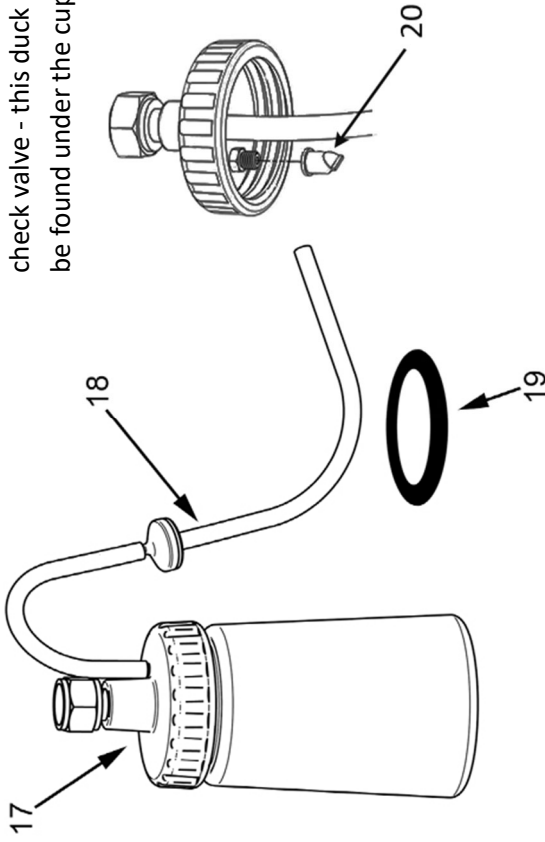
Place the Hose Connector #11 (base of the Applicator's handle) over the shaft of the Gun Holder shown in above illustration. Please ensure it is fully set down to the base of the shaft. The Applicator will now sit stationary. The Applicator can be left on the Holder for any length of time. It is a convenient resting place between spray tans.

FUJI SPRAY M-SPRAYTAN GUN



ITEM	NAME
1	Collar
2	Aircap
3	Fluid Nozzle
4	90 Degree Nipple**(NR)
5	Gun Body
6	Pattern Control Knob**(NR)
7	Fluid Knob
8	Needle Assembly
9	Needle Spring
10	Handle
11	Hose Connector**(NR)
12	Needle Packing**(NR)
13	Needle Packing Nut**(NR)
14	Trigger Pin**(NR)
15	Trigger**(NR)
16	Fluid Coupler**(NR)
17	Cup Assembly
18	Pressure Tube/Check Valve
19	Cup Lid Gasket
20	Duck Bill

Note: If your applicator uses a duck bill #20 instead of a check valve - this duck bill can be found under the cup lid.



NOTE: Items indicated with **(NR) are components which are Not to be Removed

Fuji Limited 2 Year Warranty

Fuji Industrial Spray Equipment Ltd. ("Fuji") provides a 24 month limited warranty on the product to the original purchaser effective from the date of purchase against defects in materials and workmanship.

The warranty does not cover damage or defects arising as a result of abuse, misuse, accident, negligence, malfunction, corrosion, normal wear and tear, inadequate or lack of spray gun or other aspects of maintenance of the product, damage arising from improper assembly, installation or operation, or damage arising from the product being used for a purpose other than that for which it was designed or intended. The warranty is void if repairs to the product are made or attempted by anyone other than Fuji or its authorized agent, or if any modifications to the product are made or attempted.

Purchasers located in North America must obtain a Return Material Authorization number by calling Fuji at 1-800-650-0930 before returning the product to Fuji or its designated representative. Purchasers located outside North America must contact the vendor from which they purchased the product. In all instances purchasers must return the product together with proof of purchase and with shipping prepaid. For valid warranty claims the product will be returned to the purchaser with shipping prepaid.

This is the only warranty provided by Fuji with respect to the product and is in lieu of any other warranties, express or implied, including but not limited to any warranty of merchantability or fitness for a particular purpose. Fuji's sole obligation under this warranty shall, at its option, be to either repair or replace a product determined by Fuji to be defective. In no event shall Fuji be liable for loss or profits, incidental or consequential damages, injury to any person or property, or any other damages of whatsoever nature.

CE – Certificate of Conformity

Manufacturer: Fuji Industrial Spray Equipment Ltd.
40 Magnetic Drive, #48
Toronto, ON Canada. M3J 2C4

According to: 73/23/EEC
Low Voltage Directive

Declares that
the Product: HVLP Spray System
Type Name: Turbine
Models: miniTAN, salonTAN

Conforms to the
following norms: EN 60335-1

Date: May 2018

hvlpTAN™, miniTAN™, salonTAN™ are trademarks of Fuji Spray®

No copies can be made of the material presented in this User Manual
without express permission of Fuji Spray® Toronto, ON, Canada.

Website: www.fujispraytan.com

Copyright © Fuji Spray® Toronto, ON, Canada

hvlpTAN LITE™ AND hvlpTAN GLO™ INSTRUCTIONAL MANUAL

Thank you for purchasing your hvlpTAN™ Spray Tanning System. This product has been specially designed to provide an efficient application of tanning solution products.

Please read this user manual to understand how to operate your new hvlpTAN™ Spray Tanning System and you will be able to accomplish a flawless tan with every application.

Your hvlpTAN LITE™ is packaged with the following:

- 1) hvlpTAN™ Turbine
- 2) Air Hose
- 3) TAN7400 Applicator
- 4) Extra Intake Turbine Filter
- 5) Power Cord
- 6) Instruction Manual
- 7) Cleaning Brush



Your hvlpTAN GLO™ is packaged with the following:

- 1) hvlpTAN™ Turbine
- 2) Air Hose
- 3) TAN7350 Applicator
- 4) Extra Intake Turbine Filter
- 5) Power Cord
- 6) Instruction Manual
- 7) Cleaning Brush and Wrench



Prop 65 Warning for California Residents

WARNING: This product may contain chemicals known to the State of California to cause cancer, birth defects, or other reproductive harm.

SAFETY PRECAUTIONS

Please read these instructions carefully before using the equipment.

DANGER – IMPROPER CONNECTION OF THE PLUG CAN RESULT IN A RISK OF ELECTRIC SHOCK. MAKE SURE THAT THE APPLIANCE IS CONNECTED TO AN OUTLET HAVING THE SAME CONFIGURATION OF THE PLUG. NO OTHER ADAPTER SHOULD BE USED WITH THIS APPLIANCE.



WARNING – THE TURBINE MUST NOT BE USED IN AN AREA CONTAMINATED BY VOLATILE OR FLAMMABLE MATERIALS SINCE SPARKING CAN BE EXPECTED IN THE NORMAL OPERATION OF THE MOTOR. THIS COULD IGNITE THE CONTAMINANTS CAUSING A DANGEROUS EXPLOSION.



FIRE AND EXPLOSION HAZARD - NEVER USE 1,1,1-TRICHLOROETHANE, METHYLENE CHLORIDE, OTHER HALOGENATED HYDROCARBON SOLVENTS OR FLUIDS CONTAINING SUCH SOLVENTS IN EQUIPMENT WITH ALUMINUM WETTED PARTS. SUCH USE COULD RESULT IN A SERIOUS CHEMICAL REACTION, WITH THE POSSIBILITY OF EXPLOSION. CONSULT YOUR FLUID SUPPLIERS TO ENSURE THAT THE FLUIDS BEING USED ARE COMPATIBLE WITH ALUMINUM PARTS.



WARNING – USE A RESPIRATOR OR MASK WHENEVER THERE IS A CHANCE THAT VAPOURS MAY BE INHALED. READ ALL INSTRUCTIONS OF THE MASK TO ENSURE THAT THE MASK WILL PROVIDE THE NECESSARY PROTECTION AGAINST THE INHALATION OF HARMFUL VAPOURS.

WARNING – THIS APPLIANCE IS FOR USE ON A NOMINAL 120-VOLT CIRCUIT. FOR EUROPE, AUSTRALIA, ASIA ETC. YOUR VOLTAGE WILL BE 220-240V. CHECK THE LABEL ON THE BASE OF THE TURBINE TO ENSURE YOUR UNIT IS AT THE CORRECT VOLTAGE FOR YOUR LOCATION.

CAUTION:

- Turbine must be placed on the floor when in use. The floor must be dry.
- **DO NOT** place your Turbine on a thick rug or thick carpet as this could cause overheating.
- **DO NOT** carry Turbine while spraying.
- Never place Turbine up high, doing so can cause unnecessary overheating.
- Do not cover Turbine Case as this will restrict air to the intake and result in overheating and premature failure of the motor.
- Under no circumstances should you open the Turbine Case. Except for filter cleaning or filter replacement, there is **NO** maintenance required for the Turbine unit. If there is any malfunction, unplug the unit and call us for technical assistance.

GETTING STARTED

There are two different types of Applicators (also known as Spray Guns) associated with your system:

hvlpTAN LITE™ includes the TAN7400 Applicator

hvlpTAN GLO™ includes the TAN7350 Applicator

Throughout this manual, reference will be made to both Applicators. Please refer to the information that applies to the Applicator included in your system. These instructions will be tagged with the corresponding Applicator picture.



○ The TAN7400 has stainless steel needle and nozzle components. This easy to use featherlight Applicator requires very little maintenance, with less disassembly when cleaning. The solution cup holds up to 10oz. of tanning solution.



○ The TAN7350 is a sleek design Applicator and features an adjustable Pattern Control Knob located on the back just above the fluid knob. This allows you to change the Fan Pattern from wide to narrow. The solution cup holds up to 8oz. of tanning solution.

These two applicators are built to continuously blow air even if the trigger is released. Your hvlpTAN™ Turbine has been designed to be used with a flow through or bleeder style applicator. To clean out any impurities that may have accumulated during assembly or shipping, we recommend spraying a small quantity of water through the Applicator. Before tackling any spray tanning, we suggest you experiment with plain water until you become familiar with all the controls.

HOSE CONNECTION

Connect the end of the Hose (female connector) to the Turbine Air Outlet located on the front of the Turbine. This is a simple threaded connector. Finger tight is enough – it is not necessary to use a wrench. This must not be over tightened.

The Hose is equipped with a brass Quick-Connect Coupler for easy attachment to the Applicator.

GETTING STARTED continued

To attach the Applicator to the Hose, slide back the Collar on the brass Quick-Connect Coupler (see Figure 1).



○ Insert the Male Fitting at the back-top of the Applicator into this Quick-Connect and release the Collar. You should feel the fitting click into place.



○ Insert the Male Fitting at the base of the Handle on the Applicator into this Quick-Connect and release the Collar. You should feel the fitting click into place.

To remove the Applicator from the Hose, pull back the Collar – this allows the Applicator to be removed easily (See Figure 1).



Figure 1



Figure 2

GUN HOLDER SLOT

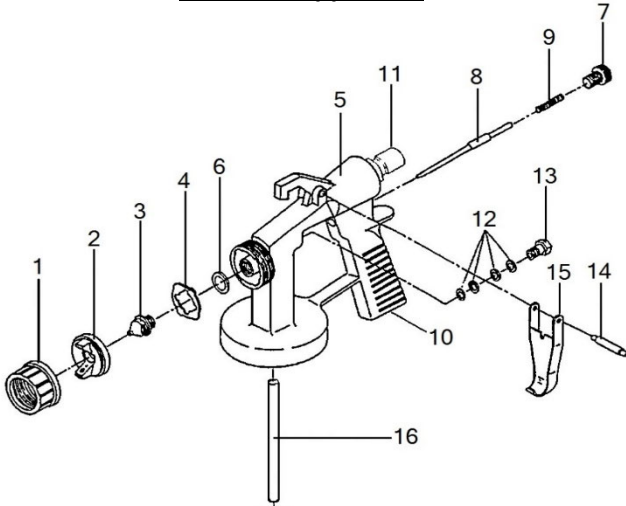
When not in use, disconnect the Hose and store the Applicator in the Gun Holder Slot found on the Turbine (See Figure 2).

This Turbine has been designed and built with a Breaker Switch. This essential component will switch the turbine off in the event that there is overheating or electrical malfunction. To avoid any overheating, ALWAYS ensure that the Intake Filter is in place and clean, and that the Air Hose is NEVER kinked.



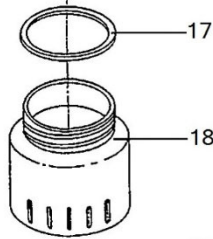
It is normal for the Turbine Air Outlet to become hot during use. Please allow your hvlpTAN™ Turbine to cool for a few minutes before removing the hose from the Turbine Air Outlet.

TAN7400 Applicator

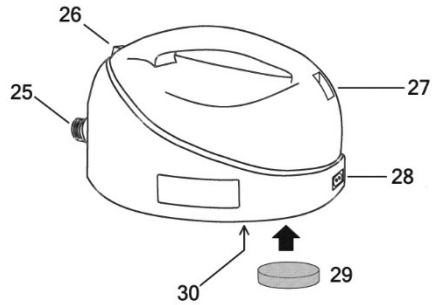


ITEM NAME

- 1 Collar
- 2 Aircap
- 3 Fluid Nozzle
- 4 Distributor Plate
- 5 Gun Body
- 6 Nozzle Seal
- 7 Fluid Knob
- 8 Needle Assembly
- 9 Needle Spring
- 10 Handle
- 11 Hose Connector**(NR)
- 12 Needle Packing**(NR)
- 13 Needle Packing Nut** (NR)
- 14 Trigger Pin**(NR)
- 15 Trigger**(NR)
- 16 Fluid Tube
- 17 Gasket for 300cc Cup
- 18 300cc Cup



Turbine

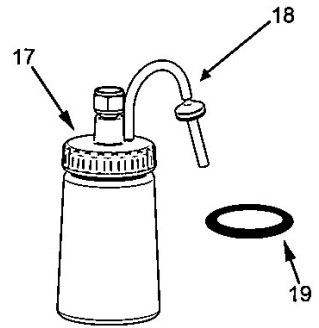
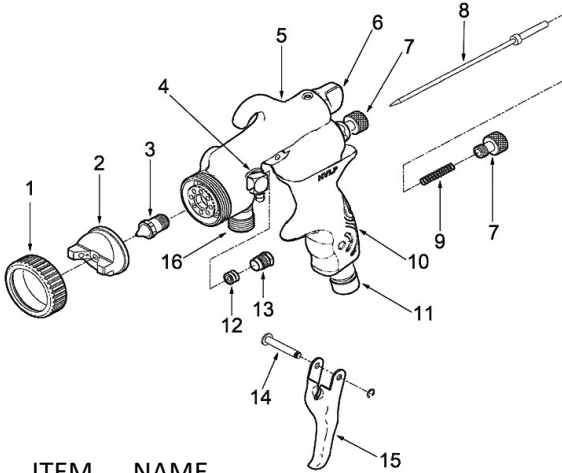


- 25 Manifold
- 26 ON/OFF Switch
- 27 Gun Holder Slot
- 28 Power Cord Connection
- 29 Filter
- 30 Breaker Switch

NOTE: Items indicated with **(NR) are components which are Not to be Removed

TAN7350 Applicator

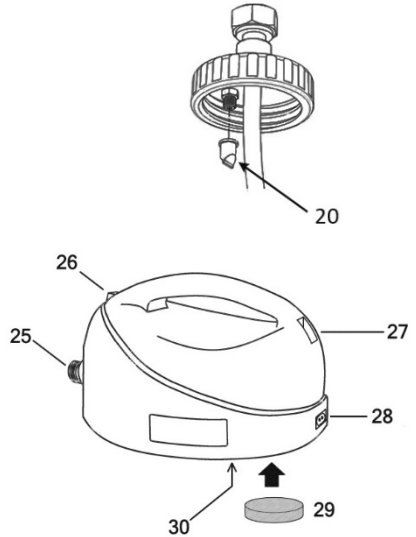
9080 MINI CUP SET - ACCESSORY



Note: If your Applicator uses a duck bill #20, instead of a check valve - this duck bill can be found under the cup lid.

ITEM NAME

- 1 Collar
- 2 Aircap
- 3 Fluid Nozzle
- 4 90 Degree Nipple**(NR)
- 5 Gun Body
- 6 Pattern Control Knob**(NR)
- 7 Fluid Knob
- 8 Needle Assembly
- 9 Needle Spring
- 10 Handle
- 11 Hose Connector**(NR)
- 12 Needle Packing**(NR)
- 13 Needle Packing Nut**(NR)
- 14 Trigger Pin**(NR)
- 15 Trigger**(NR)
- 16 Fluid Coupler**(NR)
- 17 250cc Cup Assembly
- 18 Pressure Tube/Check Valve
- 19 Cup Lid Gasket for 250cc Cup
- 20 Duck Bill



- 25 Manifold
- 26 ON/OFF Switch
- 27 Gun Holder Slot
- 28 Power Cord Connection
- 29 Filter
- 30 Breaker Switch

NOTE: Items indicated with ****(NR)** are components which are **Not to be Removed**

SPRAY PATTERNS

CHANGING THE SHAPE OF THE PATTERN FOR THE **TAN7400** AND **TAN7350**



A



B



C

A. This pattern is used when spraying from side to side.

B. This pattern is used when spraying up and down.

C. This pattern is used for touch ups.

In order to set your Applicator to a specific spray pattern, loosen the Collar #1, turn the Aircap #2 to the desired position. To lock it in position, tighten the Collar #1 clockwise until it stops turning. Always make sure the Collar is snug tight.

Setting the Aircap in a vertical position – B diagram above produces a horizontal spray pattern. This pattern is the most useful and simplest pattern shape for spray tanning. **We recommend that you set and leave the Aircap in this position.**

For spray tanning, the general setting is about 4 inches wide from 6 inches distance away. This is a personal preference.



○ Turn the Pattern Control Knob #6. This knob adjusts the size of the fan pattern from large to small round.

SPRAY PATTERNS continued

If you turn the fan pattern to a round spray pattern you will have to reduce the amount of tanning solution by turning the Fluid Knob #7. If you do not do this, you will get runs. You can use this much smaller pattern to “touch up” areas such as bikini strap lines or to enhance certain areas such as the abdominals. For best results, hold the Applicator closer to your subject (as close as 1 inch or less).

To set the fluid output, turn the Fluid Knob #7 clockwise until you cannot pull the Trigger. **DO NOT over-tighten this Fluid Knob as this will cause damage to the end of the Needle.** Then unscrew it a little until a small amount of solution is released from the Nozzle when you depress the trigger. Once you set the solution to your liking, you can leave it in this position.

Always remember that if there is not enough solution, you can turn the Fluid Knob counter-clockwise for more output (See Figure 3).

Rear view of the Applicator

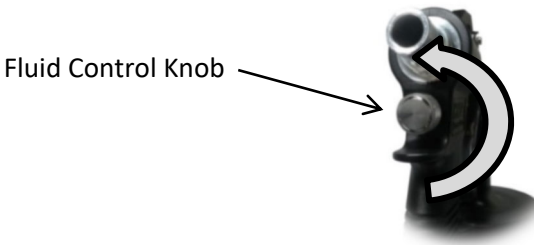


Figure 3

SPRAYING TECHNIQUES

You will notice that there is continuous air blowing out from the front of the Applicator. This is correct. Air will flow from the Aircap of the Applicator as long as the Turbine is running and the Hose is attached.

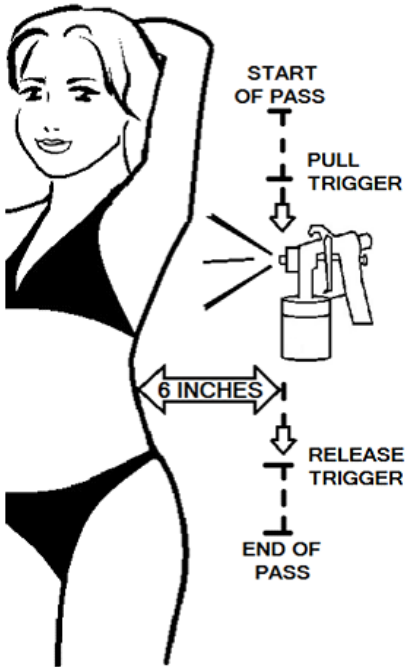
When spraying, move the Applicator at a medium, steady speed, keeping the distance of the Applicator the same throughout the spray application.

Always keep the Applicator as close to a vertical position as possible when spraying.

SPRAYING TECHNIQUES continued

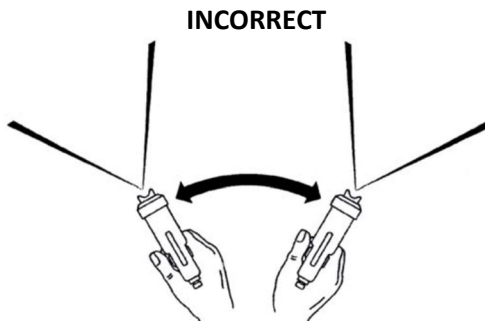
Avoid tilting Applicator, this will prevent the tanning solution from entering and blocking the clear plastic Tube (TAN7350) or Gun Body (TAN7400).

If you wish to change the direction of the spray pattern, rotate the position of the Aircap rather than tilting the Applicator to its side.



Start moving the Applicator in the direction you are going to spray before pressing the Trigger. The Trigger must be pulled immediately after you begin to move. This is the secret of avoiding runs. Never start spraying without having your hand in motion. Overlap each successive pass by about one third the size of the spray pattern (2 inches). This will result in even coverage.

Always keep Applicator perpendicular to the person you are spraying. For spray tanning, the horizontal spray pattern will give the best results, reduce overspray and shorten spraying time. Always use vertical passes to make it easy on your spraying technique.



CLEANING AND MAINTENANCE

Applicator:

Tanning solution should not be left in the cup overnight. It dries and hardens leaving a film throughout the fluid passages. Over time, the fluid passages can become clogged. To prevent this, spray soapy water through the Applicator periodically. Always keep Applicator clean and dry for next spray.

- 1) It is important to clean the Applicator daily.
- 2) Unscrew the Cup from the Cup Assembly.
- 3) Pour any unused Tanning Solution into storage container.
- 4) Rinse the cup and then fill it with clean warm water.
- 5) Re-attach the Cup. Without removing it, turn out the Fluid Knob #7 (this will allow you to pull back the Trigger all the way).
- 6) Attach the Applicator to the Hose and turn Turbine ON.
- 7) Simply pull the Trigger back and spray the water through the Applicator (into a rag is OK). Repeat once more if necessary.
- 8) Use a wet rag to wipe off any solution on the Applicator or Cup.

This is all that is needed to keep the Applicator clean and ready for use. For extra cleaning, add a small drop of dish washing liquid on the first flush, but always follow this by flushing with clean water. NEVER use any abrasive cleaning material like steel wool or any solvent to clean the Applicator.

For a more thorough cleaning, remove the following parts:

Remove the Fluid Knob #7, Spring #9, Needle Assembly #8 from the rear of the Applicator. At the front of the Applicator, remove Collar #1, Aircap #2, Fluid Nozzle #3 using a wrench, (Nozzle Seal #6 and Distributor Plate #4 for the TAN7400). You may soak the parts in soapy warm water. Do not use solvents.

DO NOT SOAK THE WHOLE APPLICATOR IN ANY LIQUID – THIS IS NEVER NECESSARY OR ADVISABLE.

CLEANING AND MAINTENANCE continued

Maintenance of the Turbine:

The only maintenance required on the hvlpTAN™ Turbine is the cleaning and replacing of the Intake Filter part # 7440. This round Filter is located on the underside of the Turbine. Simply pinch the Filter on the center and remove.

Wash the Filter in warm soapy water. Let Filter dry before replacing it back to the Turbine. **Never replace a Filter when wet.** It is always a good idea to keep extra Filters on hand.

Always store the system in a dry location. Store off the floor if in a basement setting.

TROUBLESHOOTING FOR YOUR TAN7400 AND TAN7350

1) Heavy density or light density spray

- Adjust the Fluid Knob #7 to increase or decrease volume.
- Vary distance between the Applicator and the person you are spraying.

2) Solution coming out from nozzle without operating

- Check and clean Nozzle #3. If damaged, it will require replacement.
- Check and clean the Needle Assembly #8. If damaged, it will require replacement.
- The Needle Packing Nut is too tight. Using a Wrench, loosen the Needle Packing Nut 1 or 2 degrees until the Needle moves back and forth freely.

TROUBLESHOOTING continued

3) Uneven pattern when spraying

- Check and clean Nozzle #3.
- Check and clean Air Cap #2. Use a soft cleaning brush. Never use metal objects to clean holes in the Air Cap.

4) Poor Spray Pattern

- Damaged Needle #8 or Nozzle #3 – This will require replacement.
- Check Nozzle and Air Holes in Air Cap #2– Will require cleaning.
- Applicator too far from surface (max. 6 inches away from surface).

5) Uneven coat on surface

- Ensure you are spraying a wet enough spray to coat the surface of the body evenly.
- Check and clean the Fluid Tube that goes inside the solution cup (#16 for TAN7400) and Nozzle #3. If damaged, it will require replacement.

6) Excessive overspray

- Applicator is being held too far away – 6 inches max. (15cm).
- Trigger on and off as you pass over the edge.
- Install an extraction fan**

****Please check with your local jurisdiction on this matter.**

TROUBLESHOOTING continued

7) Leaking from Needle Packing Nut

- The Needle Packing Nut #13 is too loose. Using a Wrench, Gently tighten the Needle Packing Nut 1 or 2 degrees only. Repeat until no water is seen where the Needle passes through the Needle Packing Nut.

8) Leaking from the Solution Cup Rim

- Ensure that the Cup is tightened fully.
- Replace Gasket.

9) Fluid at the Air Cap Holes

- The Fluid Nozzle #3 is loose, and material is leaking around it –tighten the Nozzle using a Wrench.

10) Applicator Sprays in a pulsating manner

- The Needle Packing has worn a little or is loose. Tighten the Needle Packing Nut #13. Gently tighten the Needle Packing Nut 1 or 2 degrees only. Repeat until no water is seen where the Needle passes through the Needle Packing Nut.
- The Solution Cup is almost empty. Add more solution.
- Clean the Fluid Coupler #16 thoroughly.

11) Turbine keeps shutting off at the breaker switch

- Check the Intake Filter #7440 is clean and in place properly.
- Check the Air Hose for any kinks that may restrict air flow.
- The Turbine is overheating due to over usage. Please leave the Turbine off for a few minutes to cool down. If necessary, reset the breaker switch, then try turning it on again.



TAN7350 Applicator

1) No Solution (or very little Solution) released

- Check Pressure Tube, it may need replacement if clogged. The pressuring air flows from the Applicator to the Cup. You should be able to blow air through the Tube and determine which direction the air flows. Installing this Tube in the wrong direction will result in no fluid flow.

2) Less solution coming out/ No flow

- Clogged 90 Degree Fitting at the Applicator and/or Nipple on the Lid of the Cup. Use either a small pipe cleaner, toothpick or a paperclip to clean out the hole so air can flow freely.

- Fluid Coupler #16 is clogged. Remove the Cup Assembly by loosening the Nut at the top of the Assembly. Use a Cleaning Brush to unclog the inside of the Fluid Coupler with soapy water. Reattach Cup assembly to Applicator.

- Fluid Knob #7 is turned in too far – turn out to allow more Solution flow.

3) The Trigger is sluggish

-The Needle Packing Nut #13 is too tight. Using the supplied Wrench, gently loosen the Nut (1 or 2 degrees only at a time). Again pull the Trigger and release. Repeat until no water is seen at the Nozzle Hole.

Limited 12 Month Warranty

Fuji Spray® Inc. issues a 12 month limited warranty to the purchaser effective the date of purchase against defects in materials or workmanship. This warranty does not cover abuse, accidental damage, misuse, normal wear parts, motor brush replacement, or Applicator maintenance and clean-up. Warranty is void if repairs are made or attempted by unauthorized persons. At our option, Fuji Spray® will repair or replace defective parts without charge provided the purchaser return parts prepaid to the nearest authorized service center or to the factory.

This unit is designed to be used for spray tanning operation only. Fuji Spray® will not be held liable if equipment is not used solely for the purpose it was designed. Warranty will become void through improper installation or operation. Any modifications to the equipment or deviations from recommended procedures, accidental damage or any related action that impairs or abuses normal wear and care of Fuji Spray® spray tanning equipment will also void warranty and liability.

In North America if you have a claim under warranty, do not return the appliance to the store. Please call our customer service number 800-650-0930 or contact our Warranty Department at info@fujispray.com. Factory returns must first receive a Return Material Authorization. In other countries, please call the company where you originally purchased the product or email us at info@fujispray.com