



## Changing Frequencies on a T-Max® G2 Access Point

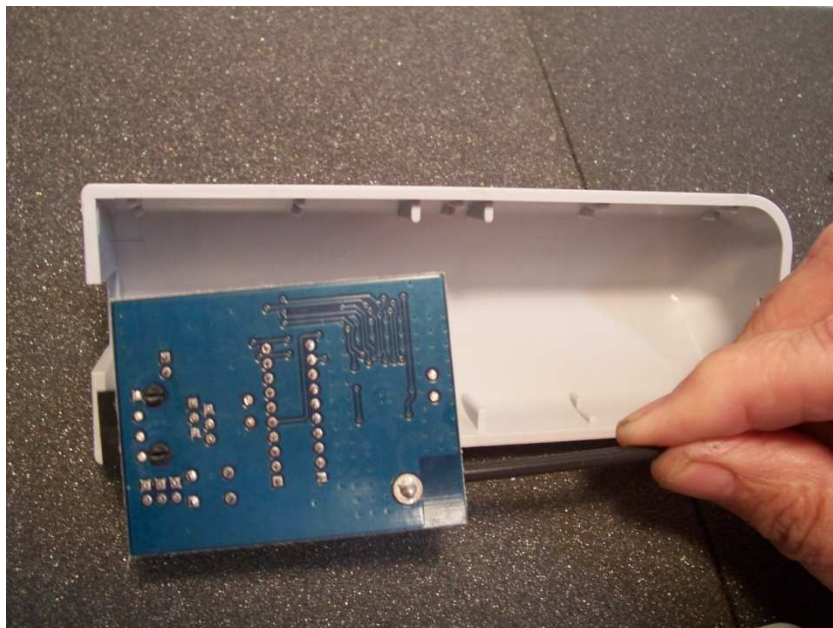
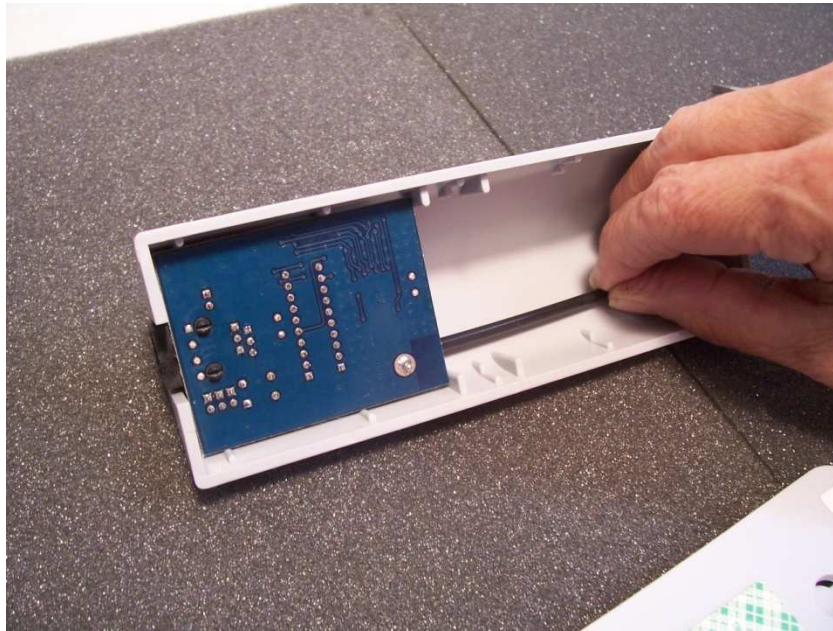
Sometimes it is necessary to set the T-Max® G2 Access Point to a different frequency than the factory default frequency to avoid interference from other wireless devices in your area. To change the frequency on your T-Max® G2 Access Point, do the following:

- 1) Disconnect the Modular cable from the bottom of the T-Max G2® Access Point.
- 2) Remove the back.

Using a small screw driver, pry in the square hold at the top the back of the T-Max® G2 Access point as shown. The back will come off.



3) Remove the circuit board from the casing.

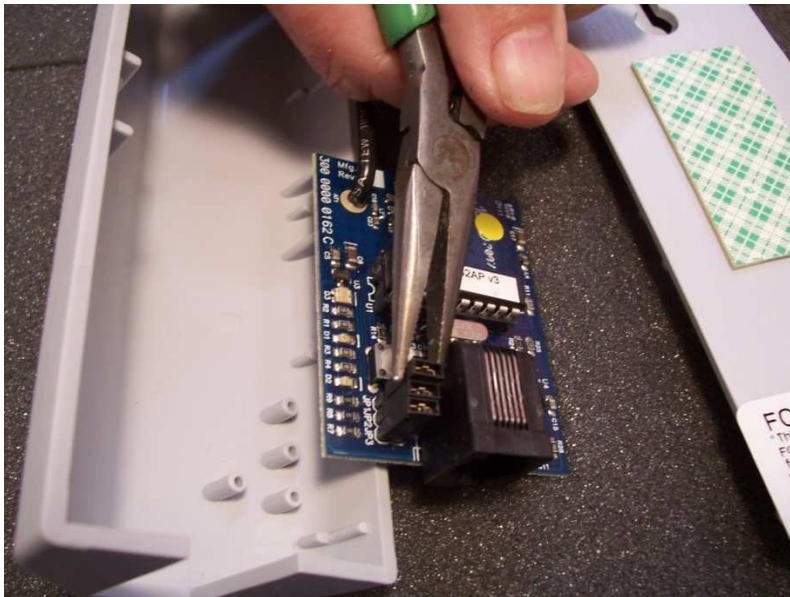


#### 4) Changing the frequencies:

There are three jumpers on the T-Max® G2 Access Point that allow you to set the T-Max® G2 Access point to one of up to eight different frequencies. The combinations are as follows:

	Jumper 1	Jumper 2	Jumper 3
Frequency 1 (default)	ON	ON	ON
Frequency 2	ON	ON	OFF
Frequency 3	ON	OFF	ON
Frequency 4	OFF	ON	ON
Frequency 5	ON	OFF	OFF
Frequency 6	OFF	OFF	ON
Frequency 7	OFF	ON	OFF
Frequency 8	OFF	OFF	OFF

Using a pair of needle-nose pliers, remove the desired jumper to set the T-Max® G2 Access Point to the desired frequency.





**Note 1: T-Max® Manager Application:**

All T-Max® G2 Access point in the entire salon MUST be on the same frequency when using a T-Max® Manager to control multiple tanning units,. Therefore, each jumper combination must be the same on each T-Max® G2 Access Point in the salon.

**Note 2: T-Max® 3W G2 Master/Slave Application:**

When using multiple T-Max® 3W G2 timers as masters to control T-Max® timers individually in tanning rooms, each pair (The T-Max® 3W G2 outside the tanning room and the tanning unit that individual timer is controlling) must be set to the same frequency, but different than another T-Max® 3W G2 and the tanning unit it is controlling, and so on.

- 5) Place the circuit board back into the T-Max® G2 Access point, place the back on and reconnect the modular cable.