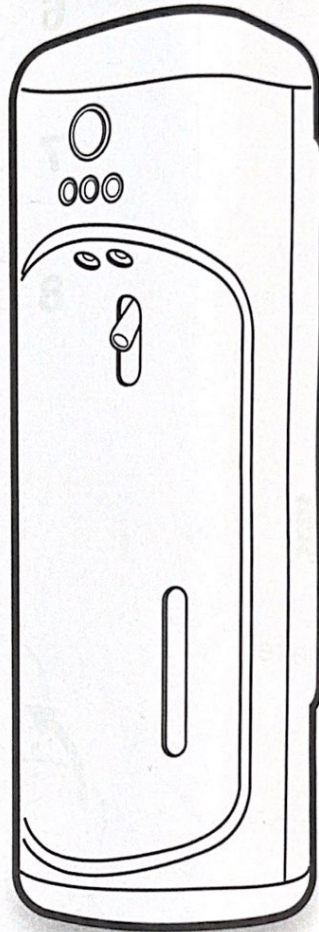
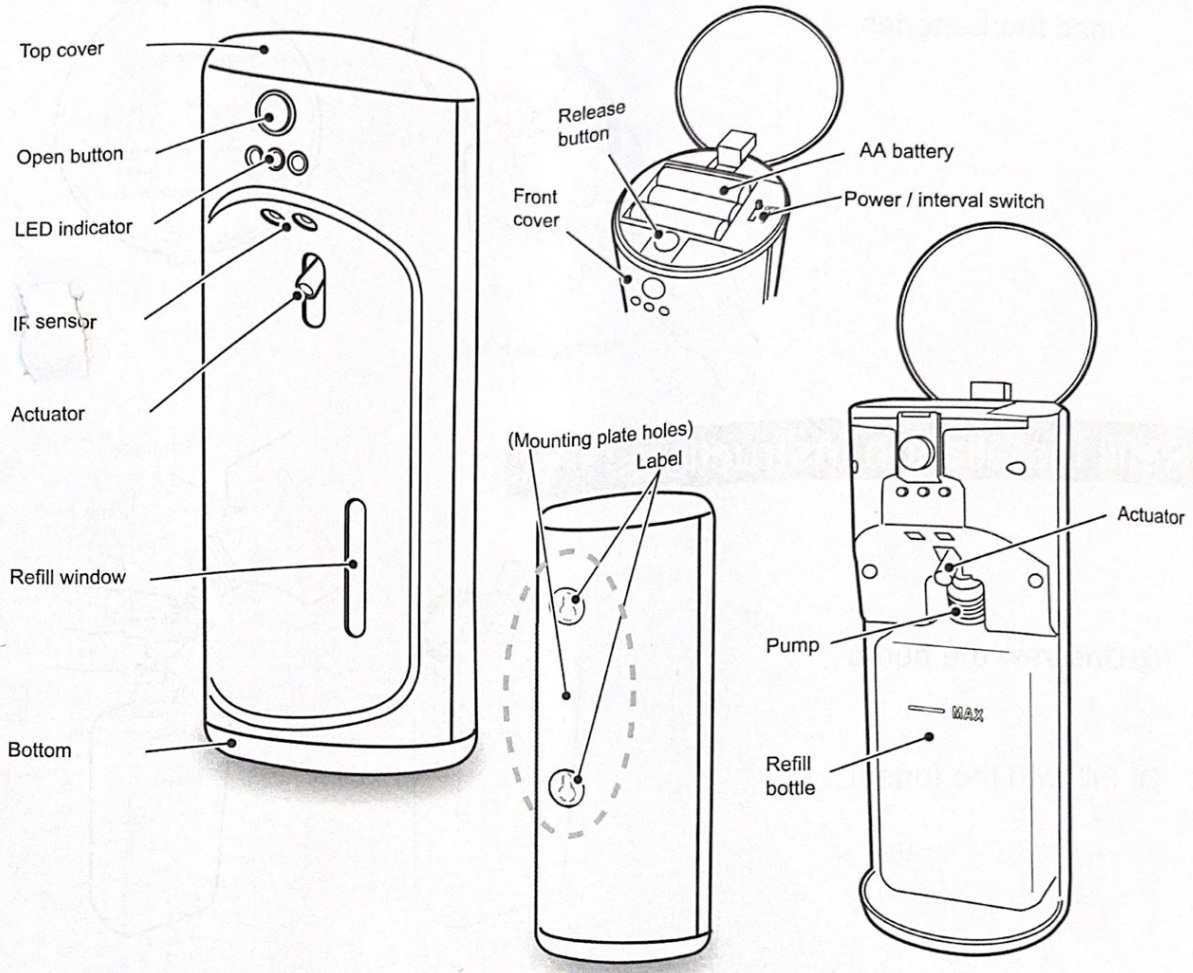


# Instructions.

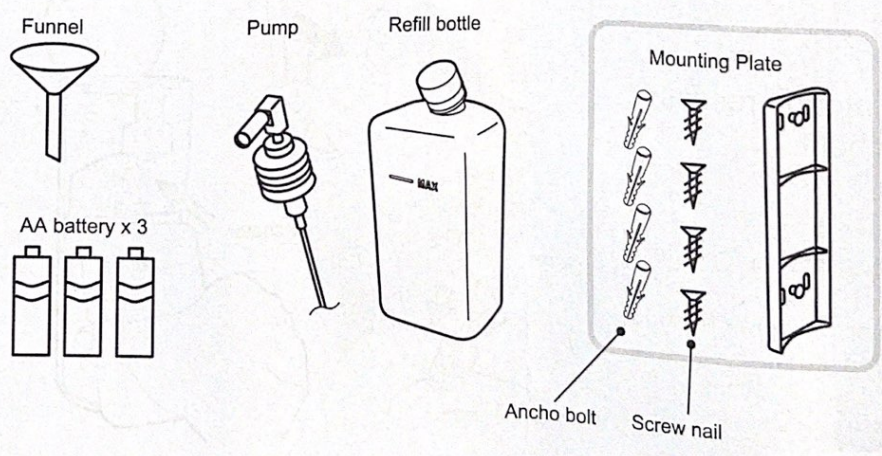


Item.	Hand Sanitiser.
Model	SA-7400
Dimension	R:9cm H:23cm
Weight	0.5kg
Battery	DC4.5V (AA-SIZE 1.5V BATTERY*3PCS)
Refill	300ml
Power	0.1W
Material	ABS /PP
Country of origin	China

# Components.

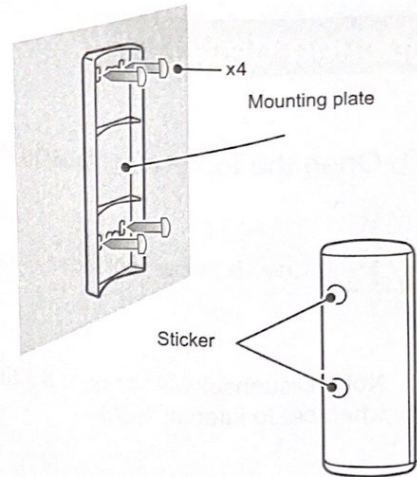


# Optional accessories.



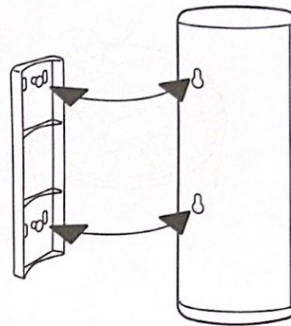
## Mounting plate installation.

① Attach the mounting plate to the wall.



② Peel off the label sticker.

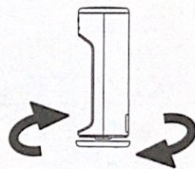
③ Align & insert bracket pegs into holes on the dispenser.



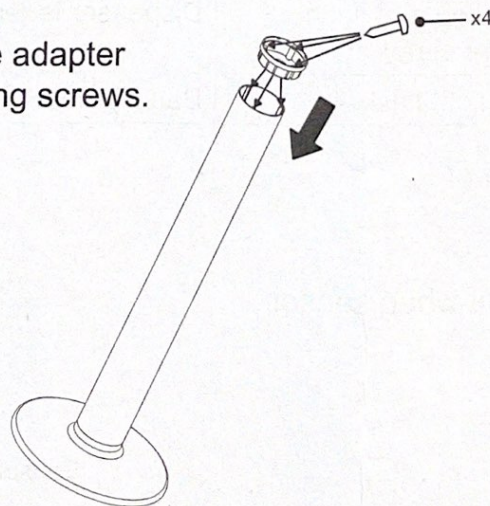
Note: Push up to release dispenser.

## Stand installation.

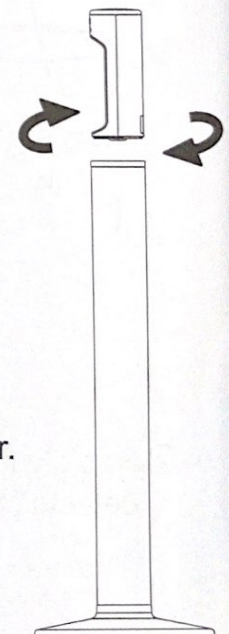
① Unscrew the bottom plate.



② Attach the adapter tightly using screws.



③ Screw down the dispenser.



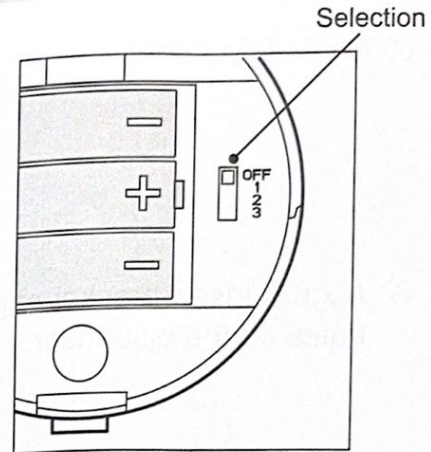
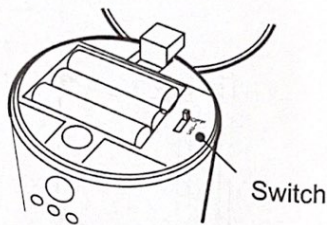
## Function detail.

① Open the top cover to adjust the interval switch.

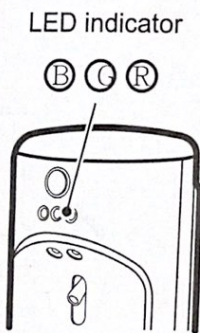


Ensure the sensor area is clear before turning the power on.

Note: Dispenser will spray 1/2/3 times when set to interval 1/2/3.

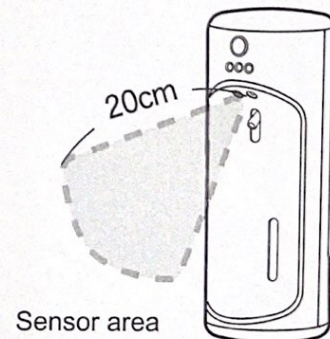


## LED indicator detail.



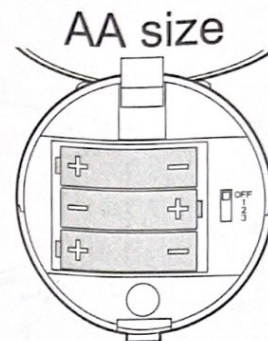
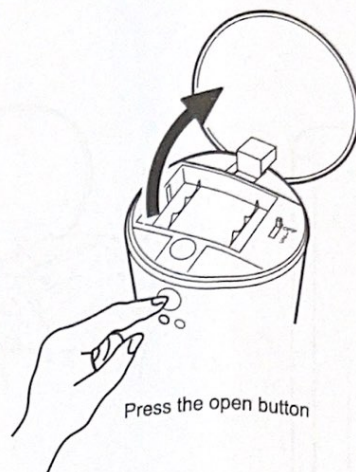
Status.	Specify.
The LED indicator will flash rapidly when switched on.	Dispenser is adjusting. Do not install bottle. Dispenser is activated to work when the flashing slows to once every 2 seconds.
Green light will flash every 2 seconds.	Dispenser is in normal working mode.
Blue light will flash before spray.	Dispenser is ready to spray.
Red light flash.	Battery is low.

② Rapidly flashing green light when sensor detects movement.



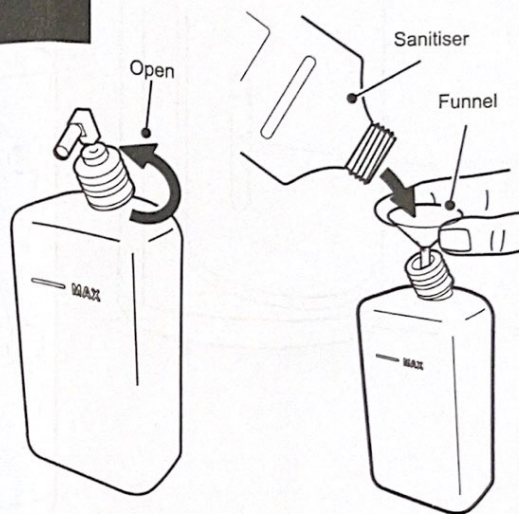
## Battery installations.

- ① Open the top cover to load the batteries.

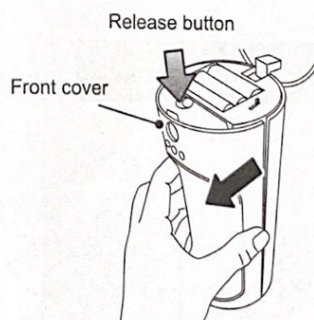


## Refill installation instructions.

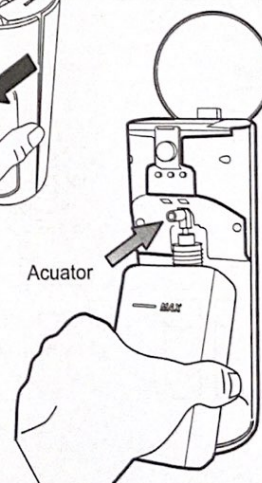
- ② Unscrew the pump.
- ③ Fill with the funnel.



- ④ Press the release button to open the front cover.



- ⑤ Fix the the nozzle into the recess, the push in the bottle.



Press down the actuator before step 5.

Note: The sanitiser will spray out once the actuator is pressed.



### ③ Wash your hands thoroughly:

Step:

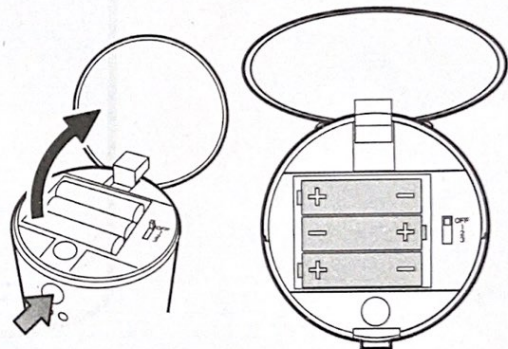


### Battery replacement.

Replace the batteries when the red LED light is flashing.



Using a mix of old and new batteries is not recommended.



Open button

### Refill bottle replacement.

Replace the refill bottle when the sanitiser level is lower than the refill window.



The sanitiser will spray out once the nozzle is pressed.

