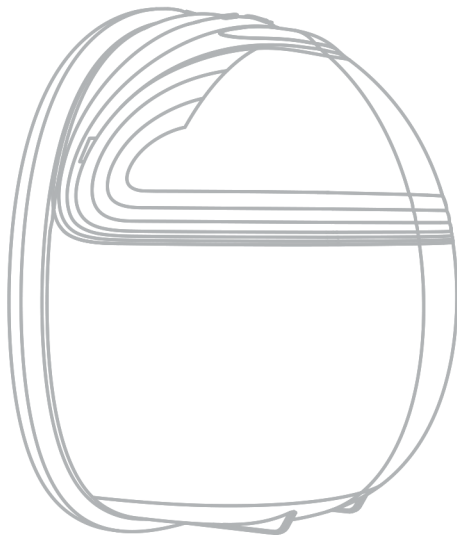




## ***Wearable Breast Pump*** **S18(2 Pump)**



Read this user manual carefully before using your electric breast pump,  
and save the user manual for future reference.

## The user manual in English

Parts list .....	1
Assembling .....	2-3
Control panel .....	4-6
Remote control panel instructions .....	7-8
Battery power indication .....	9
Instructions for duckbill valve installation .....	10
Instructions for pouring milk .....	11-12
Frequently asked questions .....	13
Product parameters .....	14
Warranty card .....	15

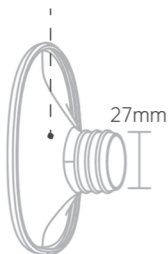
## THE USER MANUAL IN ENGLISH

### Parts list

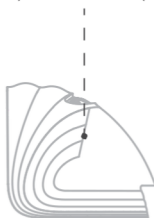
- ① 27mm wearable breast pump x2
- ② 0.94inch/24mm flange insert x2
- ③ Bra adjustment strap x2
- ④ Type-c cable x2
- ⑤ Small brush x2
- ⑥ Storage bag x2
- ⑦ User manual x1
- ⑧ Breastfeeding manual x1

### Wearable breast pump

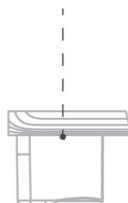
27mm Silicone breast shields (Service Life: About 4-6 Months)



Pump motor



Silicone diaphragm (Service Life: About 4-6 Months)



Remote control



Milk collector + Linker



Duckbill valve (Service Life: About 1.5-2 Months)

**▲ Note:** To prevent a decrease in suction caused by component wear, we recommend timely replacement based on the service life of each part. All components are available for purchase at the MOMMED Store on Amazon.

## Assembling

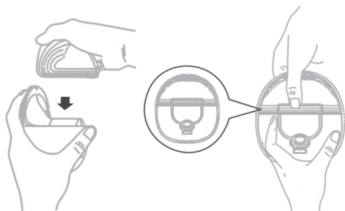
- ① Put the silicone diaphragm into the milk collector, and press it with your hands to make the edges fasten tightly to ensure a perfect seal.



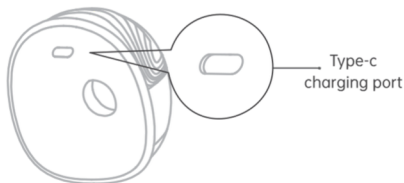
- ② Put the silicone shield into the breast milk collector and press it with your hands to make the edges tightly fastened. Make sure to install it in the correct direction.



- ③ Install the pump motor on the breast milk collector to ensure that it fits perfectly with the breast milk collector.



- ④ Connect the type-c charging cable to charge the battery.



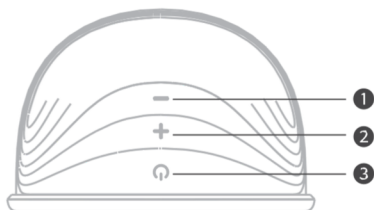
**⚠ Note:**

1. This product has a built-in li-ion battery. When the battery indicator lights red, we recommend that you use a certified 5V==1A adapter to charge the pump motor as soon as possible.
2. The power adapter is a common standard accessory on the market. This product is not provided and can be purchased separately if necessary. Power adapter specifications: 5V==1A.
3. The duration of pumping should be no more than 20 minutes.
4. Check all parts for malfunction or damage. Parts may need to be replaced in time.

## **Cleaning and sterilizing**

1. For the first time and before each use, you must disassemble, wash and sterilize all the breast pump parts that come into contact with breast milk.
2. After use, please immediately disassemble and clean all parts in contact with breasts and breast milk (membrane, milk bottle, duckbill valve, shield) to avoid breast milk residue or bacterial growth; It is recommended to use drinking water or detergent for cleaning (Water temperature should not exceed 100°C, it will damage the part and lead to deformation of the parts).

## Control panel



- ❶ Level down button
- ❷ Level up button
- ❸ Power button/Power display/Mode selection button

## ⚠ Operation cautions

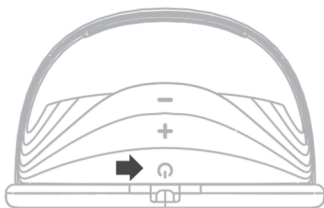
1. Made of non-toxic plastic. Don't worry about any harmful chemicals leaching into your breast milk. You can wipe those parts clean with a soft cloth.
2. Take care when cleaning the valve and the silicone diaphragm. If it gets damaged, your breast pump will not function properly.
3. To clean the valve, rub it gently between your fingers in warm soapy water. Do not insert objects as this may cause damage.

## Display description

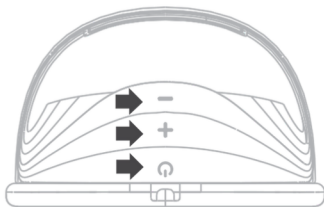
- ❶ Press the silicone shield firmly against the breast, leave no gaps, and make sure your nipple is centered. Keep it upright.  
Be careful not to distort the position of the product and the chest, otherwise, the breast pump will not have suction power.



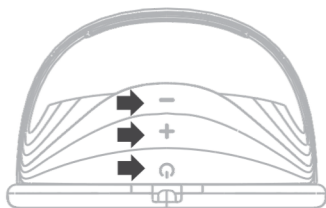
- ② Long press "⏻" to start the breast pump.



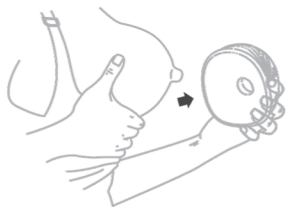
- ③ Short press "⏻" to switch the mode, and the indicator light flashes once to indicate the **Stimulation Mode**. There are 12 gears in this mode. You can choose the suction power that is comfortable for you by pressing the "+" and "-" buttons. The light flashes once when you increase or decrease the first gear, and the light flashes three times when you increase it to the highest gear or reduce it to the lowest gear. During postpartum breastfeeding, breast pain, lumps, and other breast discomforts are prone to occur. Using this pumping mode can relieve breast problems.



- ④ Short press the "⏻" again to switch to **Expression mode**, and the indicator light flashes once. There are 12 gears in this mode, and you can press the "+" and "-" button to choose the suction power that makes you comfortable. Increase or decrease one gear, the light flashes once, and the light flashes three times when it is increased to the highest gear or reduced to the lowest gear. In the early postpartum period, the lactiferous duct is not easy to conduct, and the breast can be stimulated by changing the mode to promote breast milk secretion.



- ⑤ Press "⏻" to turn off the breast pump when finished long pumping, then carefully remove the breast pump from the breast.



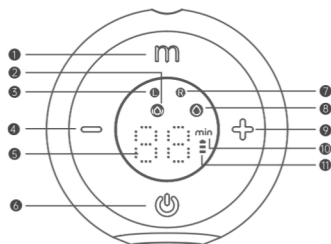
Massage mode: white light    Breast pumping mode: orange light  
In the charging state: orange light flashes; in the full state: white light is always on; in the low battery state: the light in the current mode flashes.

## Tips

1. This model has a built-in memory function, when you turn on the machine again, the machine automatically enters and up shifts to the working mode and suction level you used last time.
2. The breast pump will automatically stop after 30 minutes of work.
3. When you wear the breast pump, relax and sit in a comfortable chair, leaning forward slightly (Use the cushion to support your back). In this way, the silicone shield of the breast pump can be slightly inclined upward, which facilitates the flow of breast milk into the milk collector and reduces the residual breast milk in the silicone shield.

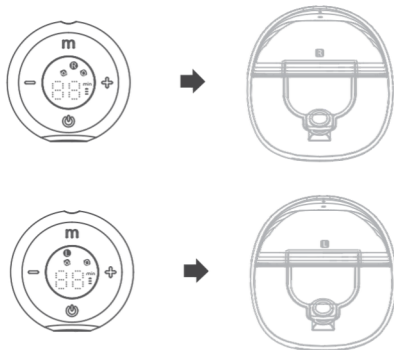


## Remote control panel instructions



- ❶ Mode switching button
- ❷ Control right breast pump
- ❸ Stimulation mode
- ❹ Expression mode
- ❺ Control left breast pump
- ❻ Level up display
- ❼ Level down display
- ❼ Time display
- ❽ Gear/Time display
- ❽ Power display Red/green light
- ❾ On/off left/Right switching button

## Remote control operation



- ① The "L" on the remote control corresponds to your left breast pump, and the "R" corresponds to your right breast pump. You can choose the left or right breast pump according to your preference.
- ② Short pressing the on/off button "☺", the remote control will restart. Short pressing the on/off button "☺" a second time will display "R" and "L" alternately on the screen. When the screen shows "R", the remote control will control the breast pump on the right. Long press the on/off button "☺" to turn on/off the right breast pump. When the screen shows "L", the remote control will control the breast pump on the left. Long press the on/off button "☺" to turn on/off the left breast pump. (If the remote control has no operation for 1 minute, the screen will close and enter sleep mode.)
- ③ After turning on the breast pump, if the remote control enters sleep mode, short press the on/off button "☺" to restart the remote control. Then, short press the on/off button "☺" again to select the breast pump you need to control. The "M" on the remote control is the mode switch button. By short pressing this button, you can choose between two modes: stimulation mode and expression mode. When "☺" is lit, it means the current mode is stimulation mode, and when "☹" is lit, it means the current mode is expression mode.
- ④ Each mode corresponds to multiple levels. You can use the "+" or "-" button to select the level that makes you comfortable.
- ⑤ When you restart the remote control or adjust the level, the display screen will show the current level in the working mode. If there is no operation for the level within 2 seconds, the level display will change to the time display, and 'min' will light up simultaneously.

### ⚠ Attention:

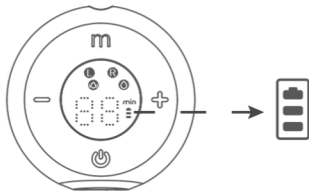
Before the product leaves the factory, we have set the left side of the breast pump ("L") to be paired with the left side of the remote control ("L"), and the right side of the breast pump ("R") to be paired with the right side of the remote control ("R").

If you receive a new breast pump or remote for any other reason, you will need to follow these steps to re-match the pump and remote.

**The steps to re-pair the remote control and breast pump are translated as follows:**

- ① Long press the on/off button "⏻" to turn on the breast pump.
- ② Press the "+" and "-" buttons on the breast pump simultaneously until the LED of breast pump flashes (yellow), entering the remote control pairing state. Then release the buttons.
- ③ Keep the remote control within 1 meter of the breast pump being paired. Short press the on/off button "⏻" of the remote control, and select the breast pump "R" or "L" you want, the remote control will shows "R" or "L" only.
- ④ Long press the remote control button "⏻" of on/off, the display of the remote control will light up.
- ⑤ Press the "+" and "-" buttons on the remote control simultaneously to pair it with the corresponding breast pump mentioned above. Once the pairing is complete, the LED on the breast pump will stop flashing and remain lit.

### **Battery power indication**



- ① When the green light is on, the power is sufficient. When the red light is on, the power is low and it should charge in time. (Battery Capacity: 3.7V 300mAh)
- ② The power indicator flashes a red light when charging starts, flashes a green light when it is nearly fully charged, and the green light stays on when it is fully charged.
- ③ It is recommended to use an adapter that meets local safety requirements for the product. (Input: 100-240V-50/60Hz-0.45, Output: 5.0V-0.5A).

## Instructions for duckbill valve installation

Insert the raised part of the duckbill valve into the round hole at the bottom of the suction bowl groove of the bra.



Picture 1



Picture 2



Duckbill valve

## Instructions for bra adjusting buckle

Adjusting the length of bra straps, makes pumping more comfortable. One end of the bra adjustment buckle hung on the inside buckle of nursing bra. Adjust the length of the bra buckle according to your preference.



Picture 1



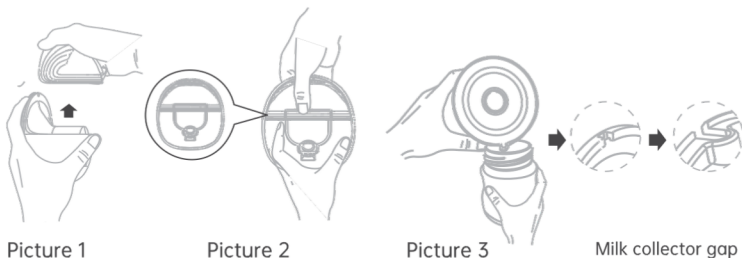
Picture 3



Picture 2

## Instructions for pouring milk

After you finish pumping, please remove the breast pump from the breast. Keep the breast pump upright and remove the motor part, hold the milk collector to pour the breast milk into a bottle, and make sure the milk collector gap of the breast cup is aligned with the mouth of the bottle to prevent breast milk spilled.



## Storing your breast milk

### • Breast milk storage

1. Only store breast milk collected from sterilized breast pumps.
2. The sucked milk should be placed in a clean and sterilized milk storage bag or a milk bottle with a seal, and immediately placed in the refrigerator to refrigerate or freeze.

### • Breast milk cold storage

1. Do not refreeze breast milk twice.
2. Do not mix fresh breast milk with frozen breast milk.
3. Be sure to throw away any remaining breast milk after feeding.
4. The pumped milk can be refrigerated in the refrigerator for 48 hours, or frozen in the freezer for 3 months (Do not store breast milk in the door of the refrigerator or freezer ). The milk bottle or milk storage bag can be affixed with a label clearly marking the milking date and time.

- **Thawing breast milk**

Place the frozen breast milk in the refrigerator overnight to thaw. If you're in a hurry, the fastest way to defrost breast milk is to put it in a bowl of warm water. The thawed breast milk must be consumed within 24 hours.

- **Heating breast milk**

1. Place the baby bottle with breast milk upright in a bowl of warm water or in a food heater to warm breast milk safely and quickly.
2. Keep in mind! Before feeding your baby, be sure to check the temperature of breast milk.
3. Do not use a microwave oven to heat breast milk as this may destroy important nutrients and antibodies.
4. Uneven heating may lead to partial overheating of the milk and cause burns.
5. Do not heat the baby bottle with breast milk in boiling water to avoid rupturing or cracking.

## FAQ

### Q: Why does the breast pump leak milk?

A: Possible reason 1: You may be in an incorrect milking position.

Solution: Please choose the most comfortable seated position for milking.

Possible reason 2: The parts of the pump were not disassembled during cleaning, resulting in the deformation of the product.

Solution: Please disassemble all parts while cleaning the breast pump. If the parts are deformed during use, please replace the accessories timely.

Possible reason 3: The duckbill valve and milk collector are in poor condition. If they are damaged or aged, the milk cannot go down into the bottle and will run out of the bra's place.

Solution: Please check if the product is in good condition before using it, and replace it with new accessories in time.

### Q: Why does the breast pump suck little breast milk?

A: The design principle of the breast pump is to imitate the action of the baby sucks, stimulating the breast to secrete milk, and achieve the purpose of expressing breast milk;

If you feel that the effect of the breast pump is not obvious and hope to pump more breast milk, you can place warm, wet washcloths on your breasts for 3 minutes in advance to activate your chest, and then use the automatic gear or massage gear for 3 minutes, and then slowly adjust the gear to find out the appropriate frequency for yourself.

**Q: Can a breast pump with a lithium battery be taken on a plane?**

A: Yes, although our breast pump has a built-in lithium battery, the capacity of it meets the flight safety requirements.

**Q: Why does the breast pump have a plastic smell?**

A: Please don't worry, it's normal for the product to have a slight smell. Our breast pumps are made of environmental-friendly BPA-free PP and silicone materials. We recommend that you open the bag and box and put them aside for a day after receiving the goods. If you need it urgently, we suggest you wash it with white vinegar or baking soda, and there will be no odor.

**Q: What should mothers pay attention to while breastfeeding?**

- A:
1. Before using the breast pump, we recommend that you use a hot towel for about 3 minutes to encourage the breasts to open up and produce milk so that the pumping speed will be faster.
  2. When you use the breast pump, the gear of it should not be too large, you just need to adjust to the gear you feel comfortable with. It is recommended that mothers fully open the breasts with a massage or automatic block, and then increase the suction.
  3. Generally speaking, one breast can be pumped within 8 minutes, we recommend that the maximum use time should not exceed 20 minutes.

**Q: Why do I feel the suction of my breast pump is too low?**

A: Please check whether all parts are installed correctly and whether the breast pump is adjusted to the appropriate gear.

## Product parameters

[	Model	]	S18
[	Product name	]	MomMed Wearable Breast Pump
[	Material	]	Food Grade Silicone, ABS
[	Product size	]	7.08*5.70*3.14inch/180*145*80mm
[	Power input	]	5V=1A
[	Lithium battery voltage	]	3.7V
[	Battery	]	1000mAh, 1.85Wh
[	Duration	]	30mins

## Warranty card

Product Warranty Card			
User Name			
Product Model			
Product Warranty Time			
Purchase Time			

Create with MomMed:



MomMed Super User Club



Activate Your Warranty Now



www.mommed.com

Follow the Instruction



Click "Activate Now"



## After-Sales Service

If you reach us for any product problem, damaged product or product defects, we are responsible for our brand Wearable Breast Pump.

Toll-Free Number: (1)888-341-9155

(Monday-Friday from 9:00 AM to 12:00 AM;13:00 PM to 18:00 PM PST)

 [support@mommed.com](mailto:support@mommed.com)

 [www.mommed.com](http://www.mommed.com)



Shenzhen TPH Technology Co., Ltd.

5th Floor, Building NO. 29 East Side, Lianchuang 2nd Technology Park,  
Bulan Road, Longgang District, Shenzhen, China.

**UK|REP** APEX CE SPECIALISTS LIMITED

89 Princess Street, Manchester, UK M1 4HT

Tel:+441616371080

E-Mail:info@apex-ce.com

**EC|REP** APEX CE SPECIALISTS LIMITED

Unit 3D North Point House

North Point Business,Park New Mallow Road co.cork,

T23 AT2P Ireland

Tel:+353212066339

E-Mail:info@apex-ce.com



### Warning

This is not a toy, keep out of reach of children.

