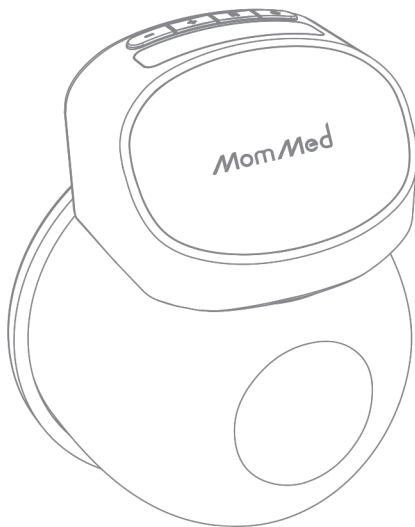




## ***Wearable Breast Pump*** **S10Pro**



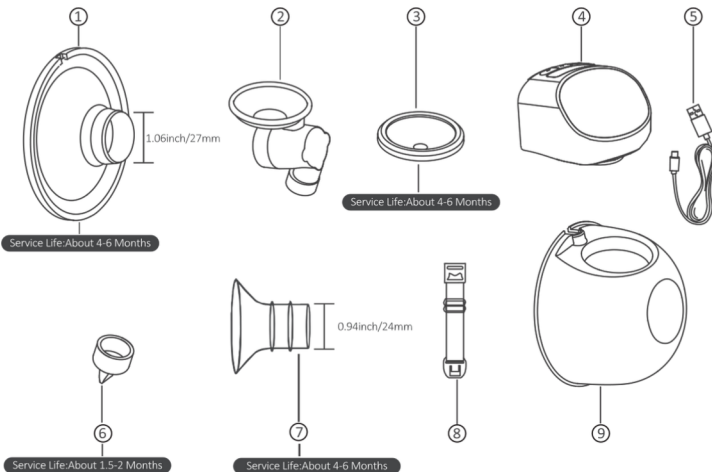
Read this user manual carefully before using your electric breast pump,  
and save the user manual for future reference.

## THE USER MANUAL IN ENGLISH

### Parts list

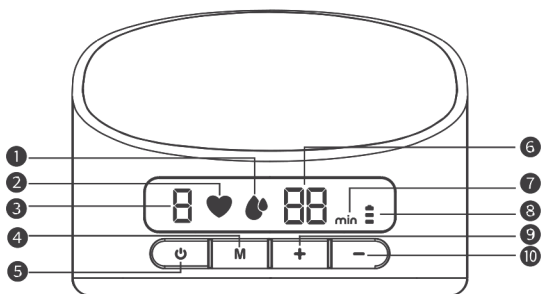
- ① 1.06inch/27mm Silicone Breast Shields
- ② Linker
- ③ Silicone Diaphragm
- ④ Pump Motor
- ⑤ Type-C Charging Cable
- ⑥ Duckbill Valve
- ⑦ 0.94inch/24mm Silicone Flange Insert
- ⑧ Bra Adjustment Buckle
- ⑨ Milk Collector
- ⑩ Small Cleaning Brush
- ⑪ Storage Bag
- ⑫ Nipple Ruler
- ⑬ Breastmilk Storage Bags
- ⑭ Breastfeeding Manual

### Wearable breast pump:



Note: To prevent a decrease in suction caused by component wear, we recommend timely replacement based on the service life of each part. All components are available for purchase at the MOMMED Store on Amazon.

## Description of led display and button function



- |                         |                     |
|-------------------------|---------------------|
| ① Expression mode       | ⑥ Time display      |
| ② Stimulation mode      | ⑦ Time/Minute       |
| ③ Level display         | ⑧ Power display     |
| ④ Mode selection button | ⑨ Level up button   |
| ⑤ Power button          | ⑩ Level down button |

## What's in the box

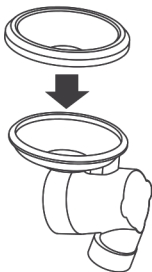
Flange Insert; Flange; Pump Motor; Silicone Diaphragm; USB Charging Cable; Milk Collector; Valve; Linker; Bra Adjustment Buckle Small Cleaning brush; Storage bag; Flange Size Ruler; Breastmilk Storage Bags; Breastfeeding manual; User manual

## **Assembly**

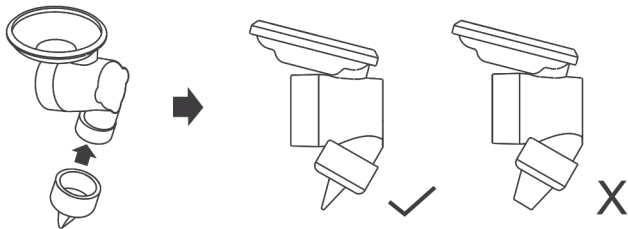
To assemble the pump, follow the steps below.

### **! CAUTIONS**

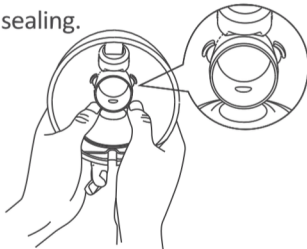
- ◆ Make sure that you clean the pump as instructed in this user manual.
  - ◆ Make sure that you assemble the pump correctly as instructed in this user manual.
  - ◆ To avoid leakage, remove the residue around the rim before assembling.
  - ◆ Wash your hands thoroughly before you assemble cleaned components.
1. Put the silicone diaphragm into the linker, and press it with your hands to make the edges fasten tightly to ensure a perfect seal.



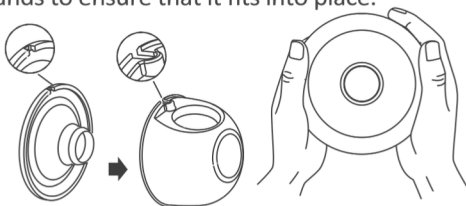
2. Install the valve into the bottom of the linker, make sure it is installed in the correct direction.



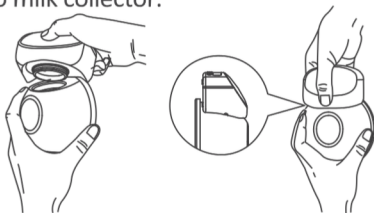
3. Put the assembled linker into the milk collector, with the ear" part of the linker aligned with the internal slot of the milk collector, and press the linker disc part with both hands to fasten the edges firmly to ensure complete sealing.



4. Install the flange on the milk collector, align the slot feature on the flange with the same slot on the milk collector, and press the edges with both hands to ensure that it fits into place.



5. Press the pump motor onto the milk collector ensure that it fits perfectly into milk collector.

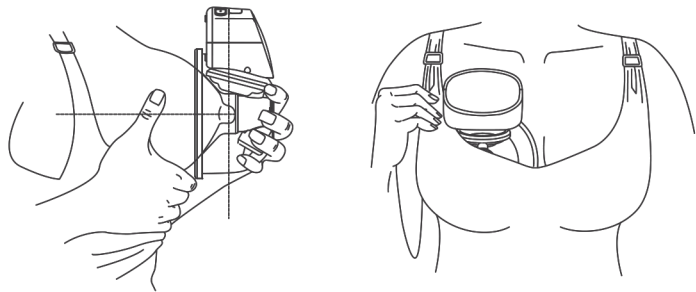


## **WARNINGS**

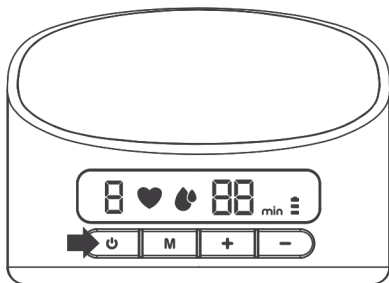
The breast pump does not work when charging with a Charger.

## To begin pumping

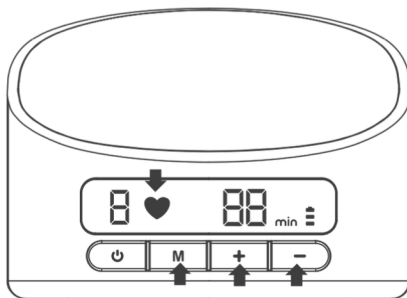
- ① Press the flange firmly against the breast, leave no gaps and make sure your nipples are centered. Keep it upright. Be careful not to distort the position of the product and the chest, otherwise the breast pump will not have suction.



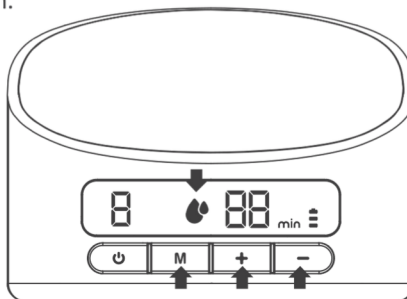
- ② Short press the power button to start the breast pump.



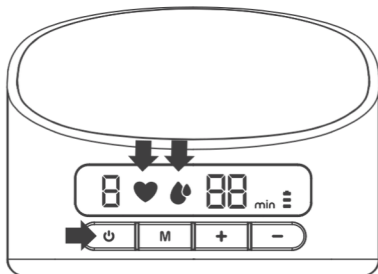
- ③ Short press the " **M** "button to switch stimulation mode. There are 9 levels in this mode. You can choose the suction that makes you comfortable by short pressing the " + " level up and " - " level down button. In the early postpartum period, the milk duct is not easy to conduct, and this mode can be used to stimulate the breast and selectively promote breast milk secretion.



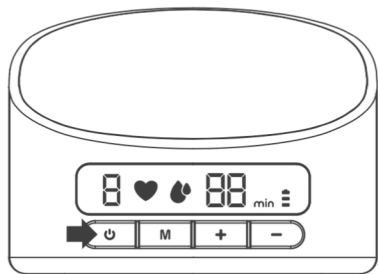
- ④ Short press the " **M** "button to switch expression mode. There are 9 levels in this mode. You can choose the suction that makes you comfortable by short pressing the "+" level up and " - " level down button.



- ⑤ Short press the button " M " again to switch automatic mode. In this mode, it will default into the stimulation mode 1 gear and will go up one gear every 15 seconds, all the way to the maximum gear of 9 and then stop rising ( "♥" flashes and "💧" is always on). This process takes 2 minutes. Then turn to the expression mode 1 gear, every 15 seconds up a gear, and has been maintained until the automatic shutdown ( "💧" flashes and "♥" is always on). Automatic upshifts function are stopped and become manual operation when a button is pressed during automatic mode operation. After changing to manual operation, if the power is turned off, the current mode will be memorized.



- ⑥ After finishing pumping, short press " ⏻ " to turn off the pump.

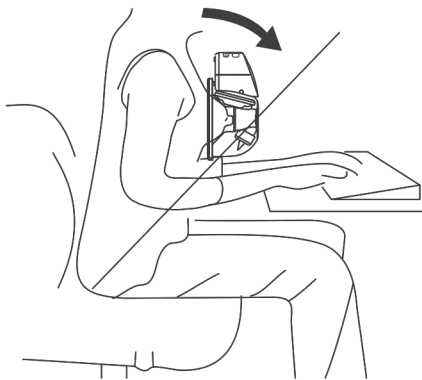




- Tips:** 1. This model has built-in a memory function, when you turn on the machine again, the machine automatically enters and up shifts to the working mode and suction level you used last time. Turning off in automatic mode and turning on again will start from the first gear of the stimulation mode by default.
2. The breast pump will automatically stop after 30 minutes of work.

### **Breastfeeding sitting position**

Relax and sit in a comfortable chair, lean slightly forward (use a cushion for back support). Make sure to keep the breast pump and breast cup upright.



Sitting posture

## Cleaning

### Cleaning & maintenance

	First Time Use	After Each Use
Pump Body	Turn on the Pump by pressing power button.	Wipe with a clean damp cloth with 70% ethyl alcohol or isopropyl alcohol as needed. Do not immerse Pump in water.
Flange, Silicone Diaphragm, Linker, Valve and Milk Collector	Boiling in water for 5 minutes Do not microwave Flange, Silicone Diaphragm, Linker Valve and Milk Collector	Clean with mild dish washing soap or clean water.



## WARNINGS

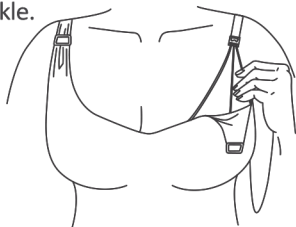
- ◆ Be careful when removing and cleaning the valve, if the valve is damaged, the breast pump will not work properly.
- ◆ To clean the valve, please rub it gently in the warm water with a few drops of cleaning liquid. Do not insert any objects into the valve, which may cause damage.

### Clean by hand

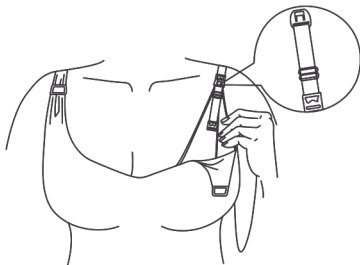
- ◆ Place pump parts in a clean wash basin used only for infant feeding item. Do not place pump parts directly in the sink.
- ◆ Add soap and hot water to basin.
- ◆ Scrub items using a clean brush only for infant feeding items.
- ◆ Rinse by holding items under running water, or by submerging in fresh water in a separate basin.
- ◆ Air-dry thoroughly. Place pump parts, wash basin, and bottle brush on a clean, unused dish towel or paper towel in an area protected from dirt and dust. Do not use a dish towel to rub or pat items dry.
- ◆ Clean wash basin and bottle brush. Rinse them well and allow them to air-dry after each use. Wash them by hand at least every few days.

## Instructions for bra adjusting buckle

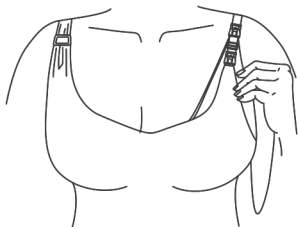
Adjust the length of bra straps, make suction more comfortable. One end of the bra adjustment buckle hung on the inside buckle of nursing bra. The length of the bra buckle on the other end of the bra adjustment buckle.



Picture 1



Picture 2



Picture 3

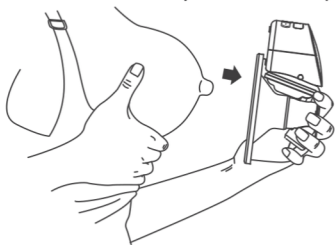
## Battery status indicator illustration

Battery status indicator displayed	Remaining pump time left
Three level is always on	No less than 100 minutes
Two level is always on	No less than 65 minutes
One level is always on	No less than 25 minutes
One level flashing	No less than 5 minutes

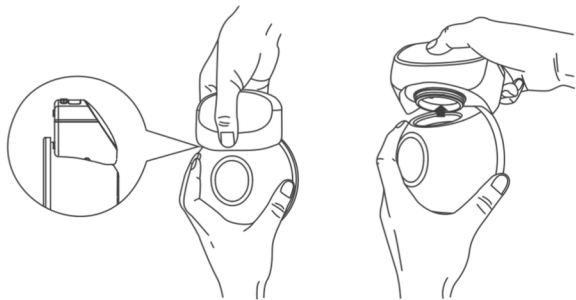
## **Ending your pumping journey**

After you finish pumping please remove the breast pump from the breast. Keep the breast pump upright and remove the motor part and hold the milk collector to pour the breast milk into the bottle. Make sure the milk collector gap of the breast cup is aligned with the mouth of the bottle to prevent breast milk spilled.

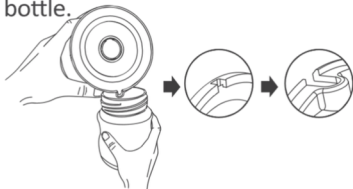
1. When you finished expressing, short press the power button to switch off and break the seal between the breast and the pump funnel with your finger, and then carefully remove the pump from your breast.



2. Separate the milk collector from the pump motor ready for feeding/storage. Clean the other used parts to the instructions.



3. Pour the milk into the storage bottle, make sure the slot feature aligned with the bottle.



## **Storing your breast milk**

### Storing breast milk

1. Only store breast milk collected by sterilized breast pumps
2. The extracted milk can be placed in a clean and sterilized milk storage bag or a milk bottle with a sealing cushion, and immediately placed in the refrigerator to refrigerate or freeze.

### Breast milk cold storage

1. Do not freeze breast milk repeatedly.
2. Do not mix fresh breast milk with frozen breast milk.
3. Be sure to discard the breast milk left after feeding.
4. The extracted milk can be refrigerated in the refrigerator for 48 hours (inside the refrigerator) or frozen in the freezer for three months, and the milk bottle or milk storage bag can be affixed with a label clearly marking the milking date and time.

### Unfreeze breast milk

Place the frozen breast milk in the refrigerator compartment for one night to thaw. In an emergency, you can use a bowl of hot water to thaw breast milk. After thawing breast milk, it must be consumed within 24 hours.

## Breast milk heating

1. Erect the baby bottle in a bowl of hot water or heat the breast milk safely and quickly with a baby bottle and food heater.
2. Keep in mind! Before feeding your baby, be sure to check the temperature of breast milk.
3. Do not use a microwave oven to heat breast milk, because this may destroy important nutrients and antibodies.
4. In addition, uneven heating may cause partial overheating of the liquid, which may cause burns.
5. Do not immerse the milk storage bottle in boiling water to heat it to prevent it from rupturing or cracking.

### FAQ:

#### Q: Why does the breast pump leak milk?

A: Possible reason 1: You may be in an incorrect milking position.

Solution: Please choose the most comfortable seated position for milking.

Possible reason 2: The parts of the pump were not disassembled during cleaning, resulting in the deformation of the product.

Solution: Please disassemble all parts while cleaning the breast pump. If the parts are deformed during use, please replace the accessories timely.

Possible reason 3: The duckbill valve and milk collector are in poor condition. If they are damaged or aged, the milk cannot go down into the bottle and will run out of the bra's place.

Solution: Please check if the product is in good condition before using it, and replace it with new accessories in time.

#### Q: Can a breast pump with a lithium battery be taken on a plane?

A: Yes, although our breast pump has a built-in lithium battery, the capacity of it meets the flight safety requirements.

**Q: Why does the breast pump suck little breast milk?**

A: The design principle of the breast pump is to imitate the action of the baby sucks, stimulating the breast to secrete milk, and achieve the purpose of expressing breast milk; If you feel that the effect of the breast pump is not obvious and hope to pump more breast milk, you can place warm, wet washcloths on your breasts for 3 minutes in advance to activate your chest, and then use the automatic gear or massage gear for 3 minutes, and then slowly adjust the gear to find out the appropriate frequency for yourself.

**Q: Why does the breast pump have a plastic smell?**

A: Please don't worry, it's normal for the product to have a slight smell. Our breast pumps are made of environmental-friendly BPA-free PP and silicone materials. We recommend that you open the bag and box and put them aside for a day after receiving the goods. If you need it urgently, we suggest you wash it with white vinegar or baking soda, and there will be no odor.

**Q: What should mothers pay attention to while breastfeeding?**

A: 1.Before using the breast pump, we recommend that you use a hot towel for about 3 minutes to encourage the breasts to open up and produce milk so that the pumping speed will be faster.

2.When you use the breast pump, the gear of it should not be too large, you just need to adjust to the gear you feel comfortable with. It is recommended that mothers fully open the breasts with a massage or automatic block, and then increase the suction.

3.Generally speaking, one breast can be pumped within 8 minutes, we recommend that the maximum use time should not exceed 20 minutes.

## Q: Why do I feel the suction of my breast pump is too low?

A: Please check whether all parts are installed correctly and whether the breast pump is adjusted to the appropriate gear.

### Product parameters

[ Model ]	S10 Pro
[ Battery ]	1200mAh
[ Silicone Breast Shields ]	27mm
[ Bottle Capacity ]	6.3oz/180ml
[ Vacuum ]	max260-280mmHg
[ Models ]	Stimulation/ Expression/Auto
[ Power input ]	DC5V1A
[ Power ]	4W
[ Charging time ]	2.5h
[ Usagetime ]	150min
[ Shut off ]	30min
[ Lithium battery voltage ]	3.7V
[ Memory mode ]	v

### After-Sales Service

If you reach us for any product problem, damaged product or product defects, we are responsible for our Wearable Breast Pumps.

 [support@mommed.com](mailto:support@mommed.com)

 [www.mommed.com](http://www.mommed.com)

Toll-Free Number: (1)888-341-9155

(Monday-Friday from 9:00 AM to 12:00 AM; 13:00 PM to 18:00 PM PST)