



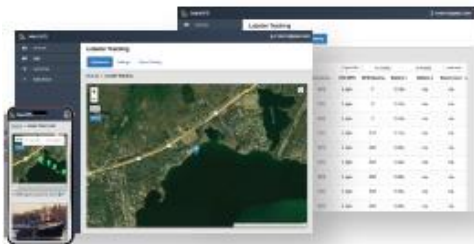
## Boat Command VMS

### Hi-resolution Commercial Fishing and Lobster Vessel Tracker & Data Logger

**Boat Command VMS** is a complete vessel tracking, monitoring and communications device incorporating next-generation, supersensitive GPS technology, 4G LTE Cellular communications, on the AT&T Cellular network, for installation on any 12- or 24-volt vessel.

Superior internal antennas for both Cellular and GPS eliminate the need for wired antennas and make **Boat Command VMS** mountable virtually anywhere on or in the vessel for fast and easy, DIY (Vessel Owner Do It Yourself) installations.

- **Type approved for the Atlantic States Marine Fisheries Commission for Electronic Tracking of Federal Lobster Vessels**
- **Approved by NOAA as an Enhanced Mobile Transceiver Unit - Cellular**
- Polling rates as frequent as every 10-seconds
- Stores up to 20,000 GPS reports when out of cellular range
- Comes with 11' power harness with in-line fuse
- Fast and easy two-wire installation
- Two-year warranty
- FCC, IC, PTCRB, AT&T, ROHS and ACCSP API compliant
- Vessel Tracking App is available at no cost to you.



4.5" (L) x 3.2" (W) x 1.6" (H)

**Boat Command VMS** is a compact, ruggedized, economical, and fully sealed (IP66 rated) Vessel Tracking Telematics System designed for easy and reliable installation. High-resolution GPS tracking rates as frequent as every 10-seconds are available for commercial marine and fishing vessels with marine exposure.

Messages are transported across the Cellular network providing a highly reliable comm link between **Boat Command VMS** and our application and web servers at AWS.

**Boat Command VMS** requires extremely low power draw and is not affected by radar, single-side band radios and/or inverters that are found on many commercial vessels.

**Boat Command VMS** has a 5.2 AH internal back-up battery that will provide up to 500 reports when main power is not available. The system will data log and store up to 20,000 GPS reports when operating out of cellular range. All stored reports are automatically uploaded once the vessel returns to cellular coverage.

**Boat Command VMS** has on-device led indicators enabling the vessel owner to readily determine that the system is functioning properly, and the vessel is in compliance.

- LTE cellular communication
- Water resistant (IP-66)
- Internal cellular and GPS antennas will transmit through fiberglass and wood
- 50-Channel Super sensitive GPS (-162 dBm), 2-meter accuracy
- 3-axis accelerometer for motion sensing
- Voltage monitoring and low battery notification
- 20,000 stored reports
- On system geo-fences
- Can monitor battery voltage, shore power, bilge activity, hydraulic activity
- Supports accurate temperature sensor
- Automatic, over-the-air unit configuration on power-up
- Supports over-the-air configuration changes
- LED system status indicators for cellular and GPS connectivity
- No cost app for vessel tracking and monitoring for both owners and fleet managers

General:

- Communication Modes LTE Cat 1: 1900 (B2)/AWS 1700 (B4)/850 (B5)/700 (B12) MHz HSPA/UMTS: 850 (V)/1900 (II) MHz
- Location Technology 55 channel GPS
- Operating Voltage 12/24 vDC
- 5.2 Ah lithium rechargeable battery pack

GPS:

- Enhancement Technology Constellation Support Hybrid GPS, GLONASS, SBAS Engine (WAAS, EGNOS, MSAS)
- Supports 2 simultaneous constellation: default to GPS and GLONASS
- Location Accuracy 2.0 meter
- Anti-jamming
- AGPS/location assistance capable

Environmental:

- Temperature -30° to +60° C (connected to primary power)
- Humidity 95%RH @ 50° C non-condensing
- Shock and Vibration U.S. Military Standards 202G and 810F, SAE J1455
- Water-resistant enclosure (IP66)

Power Consumption:

- Typical 400uA @ 12V (deep sleep)
- Typical 15mA @ 12 V (radio-active sleep)
- Typical 50mA @ 12 V (GPS tracking and cell idle)

Certifications:

Fully certified FCC, IC, PTCRB, AT&T, ROHS and ACCSP API compliant