

hohem

iSTEADY Q

Smart Selfie Gimbal

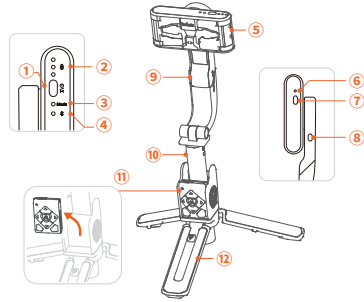
User Manual

V2.0



For quick start tutorial, please scan the QR code

1 iSteady Q Overview



- 1 Power Button (Mode Switching)
- 2 Battery Indicator Light
- 3 Working Mode Indicator Light
- 4 Bluetooth Indicator Light
- 5 Phone Clamp (Built-in 360° Infinite Rotary Motor)
- 6 Reset (Force Shutdown)
- 7 Type C Charging Port
- 8 Motor Lock
- 9 Rotary Joint
- 10 Extendable Stick
- 11 Remote Control
- 12 Tripod

2 Download the Hohem Joy App, Register and Login

(App supports face tracking, gesture control, motion timelapse and moment mode)



Scan the QR code to enter the download page

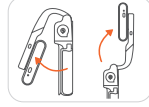
Search "Hohem Joy" in the App Store or Google Play.

*Hohem Joy app requires iOS 10.0 or above, Android 6.0 or above.

*More product tutorial videos can be found on the app homepage.

3 Phone Mounting

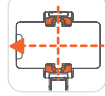
1 Unfold the Stick



2 Phone Mounting



3 Phone Balancing

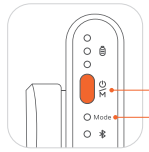


- Unfold the phone clamp and turn 'hohem' logo towards the **left**.
- Meanwhile, turn the phone camera towards the **left**, put the phone stuck in the bottom of the phone clamp, and pull the head of the phone clamp to mount your phone.



*The iSteady Q would work improperly if there is no mobile phone mounted.
*Make sure your phone clings to the rubber mat and clamps in the middle, otherwise the iSteady Q would vibrate or turn off automatically.

4 Powering On: Long press the power button for 3s



Power Button
Green light stay on



Turn On Remote Control
Turn the power button **on**.

*The remote control will connect to the iSteady Q automatically after turning on.

If the remote control is not working properly, please follow the steps to pair the device again:

- 1 Turn on the iSteady Q first. Press the power button **7 times** in a row with the same speed to enter the pairing mode, and the working mode indicator light flashes alternately in yellow and green.
- 2 Then turn on the remote control. Pairing is complete in about 1 second, and the iSteady Q's mode light stays on green.

5 Connect iSteady Q with Phone Bluetooth in the App



1 Turn on iSteady Q



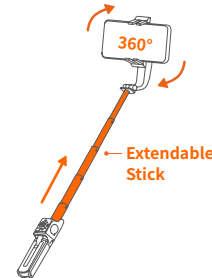
2 Enable Phone Bluetooth (Don't need to search device)

3 Follow the prompts at the top of Hohem Joy app homepage and click 'Connect'. Then connect the device with an 'iSQ-' prefix name in Hohem Joy app. The indicator light stays on and thus the phone is connected successfully.



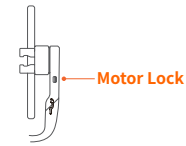
*Press iSteady Q power button **9 times** to cancel the Bluetooth pairing.

6 Handheld Use



When to lock the phone clamp?

iSteady Q's phone clamp can make 360° infinite rotation. It is able to lock the phone clamp to use as a selfie stick when it is in low power mode.



*Confirm the position of the notch on the back of the phone clamp. Lock the motor, and the bolt will be inserted into the notch. The motor will be fixed and won't rotate.

7 Desktop Use



1 Unfold the tripod and put it on the table



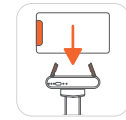
2 Manually rotate 90° along arm's bevel cut



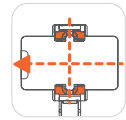
3 Rotate phone clamp to level with the desktop



4 Unfold the phone clamp



5 Put the phone into the phone clamp



6 Clamp the phone in the middle

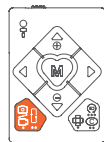


*To use 360° tracking, please make iSteady Q in desktop use, launch Hohem Joy app, turn on iSteady Q's power button, and ensure the Bluetooth is connected. Hohem Joy app supports face tracking, gesture control, motion timelapse, and moment mode.



8 Single Press the Shutter Button: Take Photo/Video

⚠ Please ensure Bluetooth is successfully connected to use the feature.

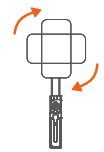


Double Press:
Switch the photo and video modes

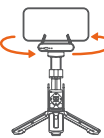
Triple Press:
Switch the front and rear cameras

(Only available in the app)

9 Single Press: Switch the landscape and portrait modes



Switch the landscape and portrait modes / Inception



360° Horizontal Rotation
Triple Press: Auto rotation(300° Auto Inception/360° Horizontal Rotation)



Double Press: Recenter the iSteady Q

Press Five Times: Auto calibration (Please do calibration on a flat surface when the iSteady Q is not level or drifting. There will be a beep sound after enabling the calibration, and do not move the iSteady Q until the calibration is done and hear another beep sound.)

Long Press 5s: Power off the iSteady Q



10 Navigation Button



Long Press Left/Right Button:
Control the rotation of iSteady Q

Double Press Left/Right Button:
90° counterclockwise / clockwise fast rotation

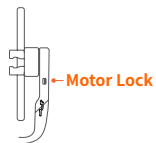


Long Press Up/Down Button: Zoom in/out (Only available in Hohem Joy app and some smartphone native cameras)



⚠ Please ensure Bluetooth is successfully connected to use the feature.

11 M Button: Switch Working Mode



Single Press: Lock Mode (Default Mode)
* When the handle rotates along the motor shaft, the phone does not follow the motor to rotate, and iSteady Q's working mode indicator light stays on green.

Double Press: POV Follow Mode
* When the handle rotates along the motor shaft, the phone does follow the motor to rotate slowly, and iSteady Q's working mode indicator light of single flashes green.

Motor Lock:
* The motor will stop working, and it can be used as a regular selfie stick by locking the motor.

12 More Functions of Power Button



Power Button

Single Press: Switch between lock/POV follow mode (Lock mode is the default mode)

Double Press: Recenter the iSteady Q

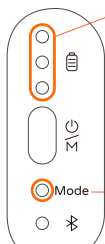
Triple Press: Auto rotation (300° Auto Inception/360° Horizontal Rotation)

Press Five Times: Auto calibration (Please do calibration on a flat surface when the iSteady Q is not level or drifting. There will be a beep sound after enabling the calibration, and do not move the iSteady Q until the calibration is done and hear another beep sound.)

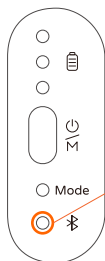
Press Seven Times: Remote control pairing

Press Nine Times: Cancel the phone Bluetooth pairing

13 About Indicator Lights



Battery Indicator Light
Stay on: Battery remaining/Charging completed
Single flashing: Charging (Only one grid shows single flash indicates low battery warning)



Working Mode Indicator Light
Green light stay on: Lock mode
Green light single flashing: POV follow mode
Yellow light flashing: Response of pressing the remote control
Yellow light stay on: Low power mode (The motor of iSteady Q stops operating, but the remote control is still connected)



Bluetooth Indicator Light
Stay on: Connected
Light off: Unconnected
Blink: Firmware updating

Specifications

Model	iSteady Q
Weight	195g
Folded Dimensions	140 x 54 x 36mm
Material	PA&PC + ABS
Battery	460mAh
Operating Time	3 hours
Mechanical Range	* Pan: 360° / Roll: 360°
Controllable Range	* Pan: 360° / Roll: 360°
Compatible Phones	Weight: ≤ 280g Thickness: ≤ 11mm Width: 55mm~100mm

Warranty Card

User Name: _____

Contact No.: _____

Address: _____

Purchase Date: _____

Prod. Serial No.: _____

Failure Cause: _____

Service Record: _____

1. Within 15 days upon the purchase date. Any functional disorder or quality problem enjoys free replacement service. But ensure the commodity and package with no damage, and we will offer a brand new replacement after confirming the product problem.
2. Warranty valid only under normal use.
3. Used in the normal circumstances, 1 year warranty, maintenance of life (not include the All accidents or artificial damage, improper disassembly or misuse damage is NOT covered by the warranty).
4. Please keep and offer the warranty card for claiming the warranty service.

CALL CENTER -Toll Free

UNITED STATES:
+1(888)9658512 Mon-Fri: 9:00AM-5:00PM(EST)

UNITED KINGDOM:
+44(0)808 2737578 Mon-Fri: 2:00PM-10:00PM(GMT +0)

CANADA:
+1(855)758-8939 Mon-Fri: 9:00AM-5:00PM(EST)

BRAZIL:
+55 (0)800 5911897 Mon-Fri: 10:00AM-6:00PM(GMT -3)

Contact us

Email: service@hohem.com
Website: www.hohem.com
Manufacturer: Hohem Technology Co., Ltd
Connect us at Facebook
@HohemTechOfficial