

# CLAW™

## Stag Portable Turntable with Built-in Stereo Speakers

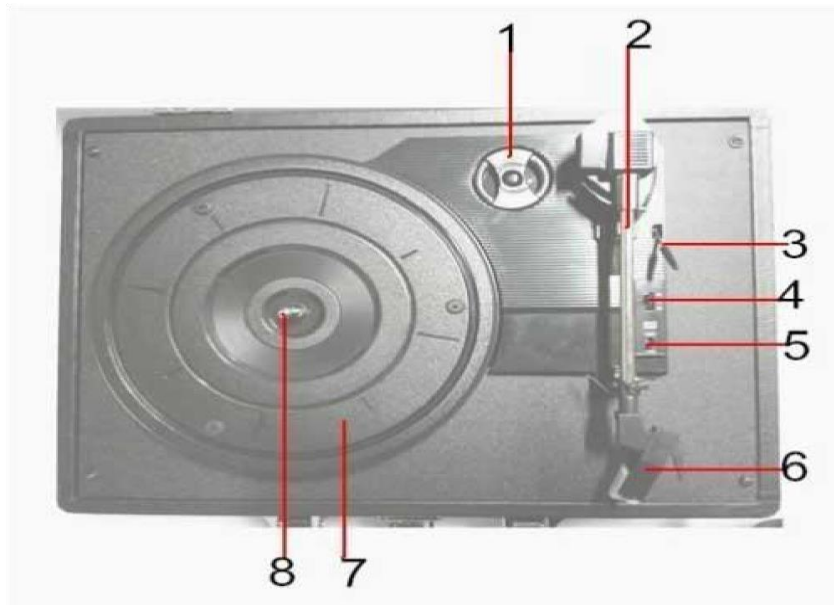


**User Manual & Warranty Information**

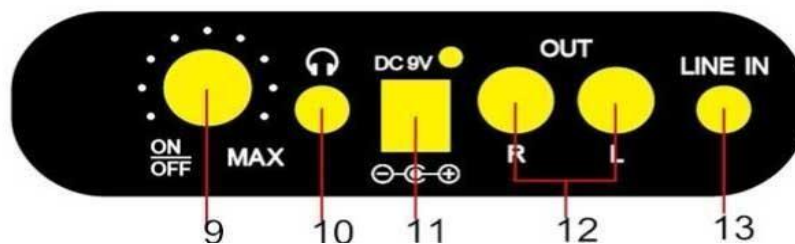
**READ THE INSTRUCTIONS CAREFULLY BEFORE USE**

Kindly register your product on [www.myclaw.in](http://www.myclaw.in)

## Description:



1. Adapter - Use this when playing 45 RPM records
2. Tone Arm
3. Tonearm lift lever
4. Speed selection - 33.3 / 45 / 78 RPM
5. Auto stop control - ON/OFF
6. Cartridge
7. Platter
8. Spindle



9. Power ON/OFF and Volume control knob
10. 3.5mm Port for Headphone or AUX out
11. Power supply
12. RCA Output - Used to connect to external speakers.
13. 3.5mm Line In - Used to connect other devices for using the speakers.

## Playing a record:

- Place the record of your choice on the turntable. If required, do not forget to place the adaptor on the record spindle.
- Choose the desired playing speed using the speed selection switch between 33.3 / 45 / 78 RPM.
- Turn on the Rotary Power Switch; note that this also controls volume.
- Release the tonearm lock and uplift the tone arm lever with your hand gently.
- Place the stylus vertically over the first track of the record and down shift the lever, the turntable will start turning automatically.
- When a record is about to come to an end, the turntable will stop automatically if the auto stop switch is in the ON position. If the switch is in the off position, then it will keep revolving until the tonearm is returned to the tonearm rest.
- uplift the tonearm lever and put it on the rest when finished.
- Place the protective cap on the stylus and close the tone arm lock.
- Turn off power from the mains.

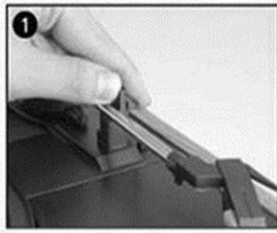
**Accessories Included:** Power adaptor, User manual + Warranty Information, 45 RPM record adaptor.

---

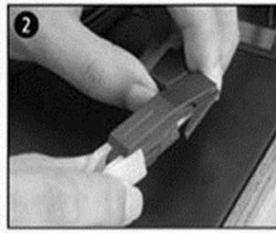
## Maintenance:

- We advise you to clean your records with an anti-static cloth to gain maximum enjoyment from them.
- We would also point out that for the same reason your stylus should be replaced periodically (approximately every 250 hours).
- Dust the stylus from time to time using a very soft brush dipped in alcohol (brushing from back to front of the cartridge).
- When transporting your player do not forget to:
  - Place the protective cap on the stylus.
  - Put the rest clip into the pick-up arm.

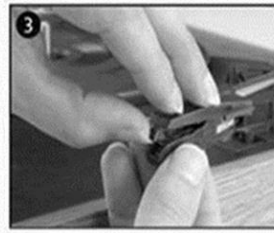
## Replacing the Stylus



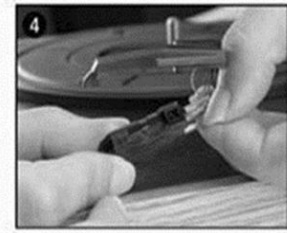
1 push the arm lock to release the tone-arm.



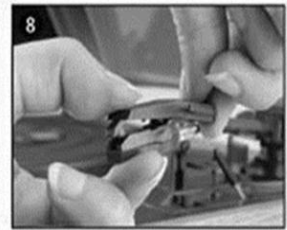
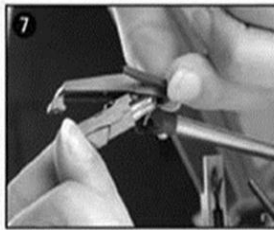
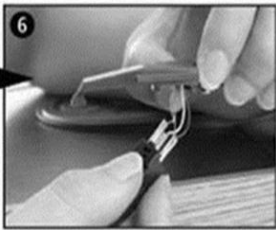
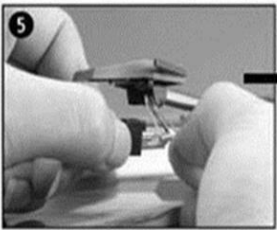
2 take off cap of the cartridge to expose the needle out.



3 separate the cartridge from the socket lightly.



4 take off the audio-line from the cartridges completely.



## Product Warranty:

1. CLAW warrants a 1-year **limited carry in warranty** commencing from the date of purchase.
2. This limited carry in warranty is conditioned upon proper use of the product by the purchaser. Following is not covered: (A) Defects or damage resulting from accident, customer induced damage, liquid, misuse, abuse, neglect, unusual physical or electrical stress, modification of any part of the product or cosmetic damage. (B) Defects or damage from improper testing, operation, maintenance, installation, or service of the product.
3. During the applicable warranty period, CLAW will repair or replace at its sole discretion.
4. Kindly retain your original purchase receipt for submission during a warranty claim. Go to our website [www.myclaw.in](http://www.myclaw.in) to register your product.

## Contact Details:

**Website:** [www.myclaw.in](http://www.myclaw.in)

**Phone:** +91 9920127749 / +91 9870294946

**Email:** [service@originmarketing.in](mailto:service@originmarketing.in)

**Address:** 223/224 Raj Ratna Industrial Estate, Liberty Garden, Malad West, Mumbai 400064

**Facebook:** [www.facebook.com/MyClaw](http://www.facebook.com/MyClaw)

**Instagram:** [www.Instagram.com/MyClaw.in](http://www.Instagram.com/MyClaw.in)

**YouTube:** [www.youtube.com/@MyClaw](http://www.youtube.com/@MyClaw)