

**SOCCKER 2024** 



**HIGH FIVE** 



ASB 2024

# YOUR KIT YOUR WAY



 **FreeStyle**<sup>TM</sup>  
SUBLIMATION



**Go Full  
Custom**  
**or Go Fast  
with Turbo**





Featuring  
**coolcore®**  
*ELITE*



## LINE UP

CoolCore® Elite	<b>7</b>
FreeStyle Sublimation	<b>11</b>
Stock Jerseys	<b>15</b>
Shorts	<b>30</b>
Ladies CoolCore® Elite	<b>33</b>
Ladies FreeStyle Sublimation	<b>37</b>
Ladies Stock Jerseys	<b>39</b>
Warm-Ups	<b>43</b>
Socks	<b>49</b>
Bags	<b>50</b>
Compression	<b>52</b>
Training	<b>54</b>
ASB Kit Packages	<b>62</b>

## ICONS

### color secure®

color secure® technology helps prevent dye migration



### Dry-Excel™

Moisture evaporation and wicking fabric



### Moisture Management

Fabric wicks moisture away keeping the body cool & dry



### Odor Resistant

Odor Resistant technology keeps garments fresher longer



### 4-Way Stretch

Stretch properties allow for increased mobility



### UPF

Garment protects against harmful UV rays



### Water Resistant

Resists rain & water to keep the body protected & dry







**STAY**  
MATCH  
DAY  
**COOL**



# Coolcore®

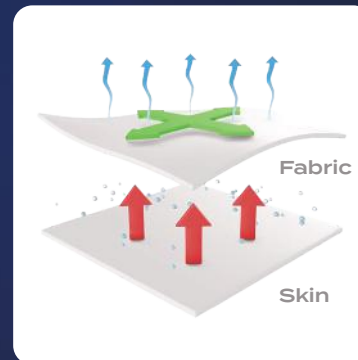
Coolcore® is engineered to distribute moisture quickly throughout the garment.

As the moisture spreads it dries faster to keep you cool and comfortable all match long while providing UPF 50 sun protection.

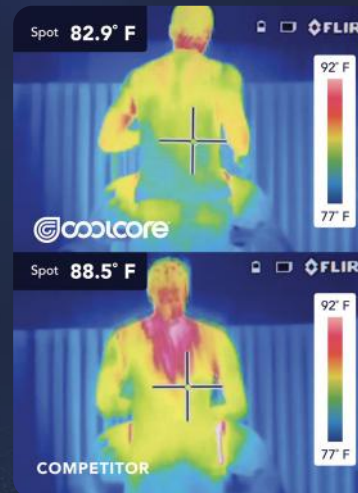
Regulated  
Evaporation

360° Moisture  
Transportation

Moisture  
Wicking



Patented Fabric  
Technology



Technology Comparison

The same athlete after  
20 minutes of activity

Explore  
Coolcore®  
Elite



321550  
pg. 7



321555  
pg. 9



321560  
pg. 9



325460  
pg. 7



321552  
pg. 33



321557  
pg. 35



321562  
pg. 35



325462  
pg. 33





321550  
**Elite Horizontal**



321550  
**Elite Lightning**

321560  
pg. 9  
**Elite Block**

325460





For available design lines visit [augustasportswear.com/sublimation](http://augustasportswear.com/sublimation)

## FREESTYLE SUBLIMATED ELITE JERSEY

<b>321550</b>	Adult	S-2XL	MSRP 53.40
<b>321551</b>	Youth	XXS-L	MSRP 52.40

- 87% polyester/13% spandex with Coolcore® technology
- 92% polyester/8% spandex mesh shoulder & back inserts with Coolcore® technology
- Garment protects against the sun with 50+ UPF
- Tag-free label
- Two piece collar
- Set-in sleeves

COORDINATING LADIES | **321552** pg. 33



**Faded Chevron**



**Goal Kick**



COORDINATING LADIES | **325462** pg. 33

**NEW**

## PLAY90 COOLCORE® SHORTS

<b>325460</b>	Adult	S-3XL	MSRP 22.00
<b>325461</b>	Youth	S-XL	MSRP 21.00

- 88% polyester/12% elastane Coolcore® with color secure® technology that helps prevent dye migration
- Garment protects against the sun with 50+ UPF
- Tag-free label
- Covered elastic waistband with inside drawcord
- 7-inch inseam
- Youth inseam graded



BLACK 080   GRAPHITE 059   NAVY 065   ROYAL 060   WHITE 005   SCARLET 083



**321550**  
**Elite**  
**Vertical**

**325460**







321555  
Elite Horizontal\*

321555  
Elite Block

Perfect for  
Goalkeeper  
Option



321560  
Elite Block

321560  
Elite Block



For available design lines visit [augustasportswear.com/sublimation](http://augustasportswear.com/sublimation)

**NEW**

**FREESTYLE SUBLIMATED ELITE LONG SLEEVE JERSEY**

<b>321555</b>	Adult	S-2XL	MSRP 61.40
<b>321556</b>	Youth	XXS-L	MSRP 60.40

- 87% polyester/13% spandex with Coolcore® technology
- 92% polyester/8% spandex mesh shoulder & back inserts with Coolcore® technology
- Garment protects against the sun with 50+ UPF
- Tag-free label
- Two piece collar
- Set-in sleeves

COORDINATING LADIES | **321557** pg. 35



**Optic**



**Gradient**



**FREESTYLE SUBLIMATED ELITE 7" SHORTS**

<b>321560</b>	Adult	S-2XL	MSRP 45.80
<b>321561</b>	Youth	XXS-L	MSRP 44.80

- 87% polyester/13% spandex with Coolcore® technology
- Garment protects against the sun with 50+ UPF
- Tag-free label
- Covered elastic waistband with inside drawcord
- 7-inch inseam
- Youth inseam graded

COORDINATING LADIES | **321562** pg. 35



**Optic Stripe**



**Faded Chevron**

**321555 Elite Block**



**321560 Elite Block**







FULLY  
REVERSIBLE



321530  
Clean  
Sheet



For available design lines visit  
[augustasportswear.com/sublimation](http://augustasportswear.com/sublimation)



**FREESTYLE SUBLIMATED  
 REVERSIBLE V-NECK JERSEY**

<b>321530</b>	Adult	S-2XL	MSRP 65.50
<b>321531</b>	Youth	S-L	MSRP 63.50

- 100% polyester single ply reversible closed hole mesh
- Garment protects against the sun with 50+ UPF
- Tear away label
- Set-in sleeves



**Whirlwind**



**Optic**



**Peru**



**Center Stripe Fade**



321520  
**Faded  
Chevron**



321810  
**Faded  
Chevron**

321510  
**Catalan**



321810  
**Twin  
Stripe**



For available design lines visit  
[augustasportswear.com/sublimation](http://augustasportswear.com/sublimation)



### FREESTYLE SUBLIMATED TURBO V-NECK JERSEY

**321520** Adult S-2XL MSRP 41.00  
**322520** Youth S-L MSRP 40.00

- 100% polyester wicking knit
- Garment protects against the sun with 50+ UPF
- Tag-free label
- Raglan sleeves



Clean Sheet



Whirlwind



Optic



### FREESTYLE SUBLIMATED TURBO CREW NECK SOCCER JERSEY

**321510** Adult S-2XL MSRP 37.60  
**322510** Youth S-XL MSRP 36.60

- 100% polyester wicking knit
- Garment protects against the sun with 50+ UPF
- Tag-free label
- Set-in sleeves



Center Stripe Fade



Clean Sheet



Gradient



### FREESTYLE SUBLIMATED TURBO SOCCER SHORTS

**321810** Adult S-2XL MSRP 41.00  
**326810** Youth S-L MSRP 40.00

- 100% polyester wicking smooth knit
- Garment protects against the sun with 50+ UPF
- Tag-free label
- Covered elastic waistband with inside drawcord
- 7-inch inseam
- Youth inseam graded



Center Stripe Fade



Clean Sheet



Optic Stripe

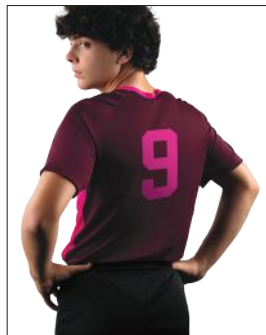




**NEW**







Back



**MADRID JERSEY**

**NEW**

**322240** Adult S-2XL MSRP 15.00  
**322241** Youth XXS-L MSRP 14.00

- 100% polyester wicking knit with color secure® technology that helps prevent dye migration
- Tag-free label
- Low profile tapered collar
- Raglan sleeves



BLACK/WHITE 420  
 COLUMBIA BLUE/WHITE 293  
 DK GREEN/LIME 838  
 DK GREEN/WHITE 438  
 ELECTRIC YELLOW/BLACK 78N



LIME/WHITE 693  
 MAROON/POWER PINK 829  
 MAROON/WHITE 245  
 NAVY/POWER BLUE 888  
 ORANGE/WHITE 320



POWER BLUE/WHITE 834  
 POWER PINK/WHITE 468  
 PURPLE/WHITE 450  
 ROYAL/GOLD 281  
 ROYAL/WHITE 280



SCARLET/BLACK 406  
 SILVER/BLACK 098  
 TEAL/WHITE 331  
 VEGAS GOLD/WHITE 250  
 WHITE/BLACK 226







Back

COORDINATING LADIES | 322992 pg. 39



**NEW**

## HAWK EVOLUTION JERSEY

<b>322990</b>	Adult	S-3XL	MSRP 20.00
<b>322991</b>	Youth	S-XL	MSRP 19.00

- 100% polyester wicking knit with color secure® technology that helps prevent dye migration
- 90% polyester/10% spandex wicking mesh inserts with color secure® technology
- Tag-free label
- Low profile tapered collar
- Raglan sleeves
- Side vent detail



BLACK/WHITE 420  
COL BLUE/BLACK 292  
DK GREEN/WHITE 438  
GOLD/WHITE 245  
GRAPHITE/WHITE R04



KELLY/BLACK 342  
MAROON/WHITE 380  
NAVY/LIME 666  
NAVY/WHITE 301  
ORANGE/WHITE 320



POWER BLUE/WHITE 834  
POWER ORANGE/BLACK Y59  
POWER YELLOW/BLACK 457  
PURPLE/WHITE 450  
ROYAL/GOLD 281



ROYAL/WHITE 280  
SCARLET/WHITE 408  
SILVER/BLACK 098  
WHITE 005  
TEAL/BLACK 435







Back



**SHEFFIELD JERSEY**

**322970** Adult S-3XL MSRP 17.80  
**322971** Youth XXS-L MSRP 16.80

- 100% polyester wicking knit with color secure® technology that helps prevent dye migration
- Tag-free label
- Raglan sleeves



BLACK/WHITE 420  
 COLUMBIA BLUE/WHITE 293  
 DARK GREEN/WHITE 438  
 ELECTRIC ORANGE/BLACK 81N  
 ELECTRIC YELLOW/BLACK 78N



GRAPHITE/WHITE R04  
 KELLY/BLACK 342  
 LIME/BLACK 530  
 MAROON/WHITE 380  
 NAVY/LIME 666



NAVY/WHITE 301  
 ORANGE/WHITE 320  
 PURPLE/WHITE 450  
 POWER BLUE/BLACK 81B  
 ROYAL/GOLD 281



ROYAL/WHITE 280  
 SCARLET/BLACK 406  
 SCARLET/WHITE 408  
 WHITE 005  
 VEGAS GOLD/BLACK 252







WEMBLEY JERSEY

<b>322930</b>	Adult	S-2XL	MSRP 19.00
<b>322931</b>	Youth	XS-L	MSRP 18.00

- 100% polyester wicking knit with color secure® technology that helps prevent dye migration
- Tag-free label
- Two piece collar
- Set-in sleeves



ATHLETIC GOLD/ WHITE/ BLACK 661	BLACK/ GRAPHITE/ WHITE 489	COLUMBIA BLUE/ WHITE/ NAVY 533	FOREST/ BLACK/ WHITE 148	GRAPHITE/ BLACK/ WHITE U73	KELLY/ WHITE/ BLACK 609
---	-------------------------------------	--	-----------------------------------	-------------------------------------	----------------------------------



LIME/ WHITE/ BLACK 652	LIME/ WHITE/ NAVY 694	MAROON/ WHITE/ BLACK 162	NAVY/ WHITE/ GRAPHITE 372	ORANGE/ BLACK/ WHITE 322	POWER BLUE/ BLACK/ WHITE 837
---------------------------------	--------------------------------	-----------------------------------	------------------------------------	-----------------------------------	--



POWER YELLOW/ BLACK/ WHITE 458	PURPLE/ BLACK/ WHITE 497	ROYAL/ WHITE/ ATHLETIC GOLD Y80	ROYAL/ WHITE/ BLACK 150	SCARLET/ WHITE/ BLACK 588	SCARLET/ NAVY/ WHITE 656
--	-----------------------------------	---	----------------------------------	------------------------------------	-----------------------------------



WHITE/ BLACK/ GRAPHITE X26	VEGAS GOLD/ WHITE/ BLACK 605
-------------------------------------	--





COORDINATING LADIES/GIRLS | 6915/6916 pg. 40



**CUTTER+ V-NECK JERSEY**

<b>6907</b>	Adult	S-3XL	MSRP 20.00
<b>6908</b>	Youth	S-XL	MSRP 19.00

- 96% polyester/4% spandex lightweight knit with color secure® technology that helps prevent dye migration
- Garment protects against the sun with 50+ UPF
- Tearaway label
- Raglan sleeves



Back



BLACK/GOLD 421  
 BLACK/SCARLET 500  
 BLACK/WHITE 420  
 COLUMBIA BLUE/WHITE 293  
 DARK GREEN/WHITE 438  
 GOLD/WHITE 245



GRAPHITE/WHITE R04  
 LIME/ROYAL O3W  
 MAROON/WHITE 380  
 NAVY/SCARLET S20  
 NAVY/WHITE 301  
 ORANGE/BLACK 321



ORANGE/WHITE 320  
 PURPLE/WHITE 450  
 ROYAL/SCARLET W81  
 ROYAL/WHITE 280  
 SCARLET/BLACK 406  
 SCARLET/WHITE 408



VEGAS GOLD/BLACK 252  
 WHITE/BLACK 226  
 WHITE/NAVY 221  
 WHITE/ROYAL 220  
 WHITE/SCARLET 235





COORDINATING LADIES/GIRLS | 1522/1523 pg. 41



**CUTTER JERSEY**

<b>1517</b>	Adult	S-3XL	MSRP 16.40
<b>1518</b>	Youth	XXS-XL	MSRP 15.40

- 100% polyester wicking knit with color secure® technology that helps prevent dye migration
- 92% polyester/8% spandex wicking pinhole mesh underarms
- Tag-free label
- Raglan sleeves
- Longer length



Back



WHITE/ ROYAL 220	DARK GREEN/ WHITE 438	COLUMBIA BLUE/ NAVY 294	KELLY/ BLACK 342	POWER YELLOW/ BLACK 457	ATHLETIC GOLD/ WHITE 596	LIME/ WHITE 693
------------------------	--------------------------------	----------------------------------	------------------------	----------------------------------	-----------------------------------	-----------------------



POWER BLUE/ WHITE 834	POWER ORANGE/ BLACK Y59	GRAPHITE/ WHITE R04	BLACK/ GOLD 421	BLACK/ WHITE 420	MAROON/ WHITE 380	NAVY/ WHITE 301
--------------------------------	----------------------------------	---------------------------	-----------------------	------------------------	-------------------------	-----------------------



ORANGE/ WHITE 320	PURPLE/ WHITE 450	RED/ BLACK 407	RED/ WHITE 400	ROYAL/ ORANGE 284	ROYAL/ WHITE 280	VEGAS GOLD/ WHITE 250
-------------------------	-------------------------	----------------------	----------------------	-------------------------	------------------------	--------------------------------



WHITE/ BLACK 226	WHITE/ NAVY 221	WHITE/ RED 225	WHITE/ WHITE 230
------------------------	-----------------------	----------------------	------------------------

**NFHS WHITE OPTION**  
THE SOLID WHITE JERSEY IS NFHS AWAY TEAM UNIFORM COMPLIANT WHEN PAIRED WITH ANY WHITE SOCK







Back



**HYPERVOLT JERSEY**

<b>322980</b>	Adult	S-2XL	MSRP 23.60
<b>322981</b>	Youth	XS-L	MSRP 21.60

- 100% polyester wicking smooth knit
- Roller printed to reduce chance of dye migration
- Tag-free label
- Low profile tapered collar
- Raglan sleeves



ATHLETIC GOLD PRINT/ BLACK 73E	BLACK PRINT/ WHITE 66E	COLUMBIA BLUE PRINT/ BLACK 79E	GRAPHITE PRINT/ WHITE D62	KELLY PRINT/ BLACK 72E
--	------------------------------	--	------------------------------------	------------------------------



LIME PRINT/ NAVY 78E	MAROON PRINT/ BLACK 74E	NAVY PRINT/ WHITE 67E	POWER PINK PRINT/ WHITE 81E	POWER YELLOW PRINT/ BLACK 84E
----------------------------	----------------------------------	-----------------------------	--------------------------------------	---



PURPLE PRINT/ WHITE 68E	ROYAL PRINT/ BLACK 71E	SCARLET PRINT/ BLACK 70E	VEGAS GOLD PRINT/ BLACK 76E	WHITE PRINT/ BLACK 69E
----------------------------------	---------------------------------	-----------------------------------	--------------------------------------	---------------------------------





Back



### SHORT SLEEVE MESH REVERSIBLE JERSEY

<b>1602</b>	Adult	S-2XL	MSRP 19.60
<b>1603</b>	Youth	XXS-XL	MSRP 18.60

- Two layers of 100% polyester sports mesh body with color secure® technology that helps prevent dye migration
- 100% polyester wicking smooth knit collar with color secure® technology
- Tear away label
- Fully reversible for wearing on either side
- Set-in sleeves
- Each layer hemmed separately for easy embellishment



1851





Back



## GENESIS JERSEY

**322730** Adult S-2XL MSRP 17.40

**322731** Youth XXS-L MSRP 16.40

- 100% polyester wicking knit
- Tag-free label



ORANGE/  
WHITE  
320

PURPLE/  
WHITE  
450

RASPBERRY/  
WHITE  
514

ROYAL/  
WHITE  
280



SCARLET/  
WHITE  
408

SILVER  
GREY/BLACK  
470

TEAL/  
WHITE  
331

WHITE/  
BLACK  
226



ATHLETIC  
GOLD/WHITE  
596

BLACK/  
WHITE  
420

COLUMBIA  
BLUE/WHITE  
293

FOREST/  
WHITE  
436



KELLY/  
WHITE  
340

LIME/  
WHITE  
693

MAROON/  
WHITE  
380

NAVY/  
WHITE  
301





7-inch  
inseam  
(Youth  
inseam  
graded)

5-inch  
inseam

Ladies Fit



7-inch  
inseam  
(Youth  
inseam  
graded)

7-inch  
inseam

Ladies Fit

**COOLCORE**



**NEW**

### PLAY90 COOLCORE® SHORTS

<b>325460</b>	Adult	S-3XL	MSRP 22.00
<b>325461</b>	Youth	S-XL	MSRP 21.00
<b>325462</b>	Ladies	XS-2XL	MSRP 22.00

- 88% polyester/12% elastane Coolcore® with color secure® technology that helps prevent dye migration
- Garment protects against the sun with 50+ UPF
- Tag-free label
- Covered elastic waistband with inside drawcord



### OCTANE SHORTS

<b>1425</b>	Adult	S-3XL	MSRP 8.40
<b>1426</b>	Youth	XXS-L	MSRP 8.40
<b>1423</b>	Ladies	S-2XL	MSRP 8.40

- 100% polyester wicking knit
- Full-cut
- Tag-free label
- Covered elastic waistband with inside drawcord



\* Maroon & Purple shades can vary by brand, please contact our Customer Care with questions



6-inch  
inseam



**PRIMO 2.0 SHORTS**

**NEW**

**325934** Adult S-2XL MSRP 15.20

- 100% polyester wicking knit
- 100% Coolmax™ lining on white
- Tag-free label
- Covered elastic waistband



BLACK  
080



NAVY  
065



ROYAL  
060



SCARLET  
083



WHITE  
005



7-inch  
inseam  
(Youth  
inseam  
graded)



**PRIMO SHORTS**

**325390** Adult S-2XL MSRP 15.20

**325391** Youth XXS-L MSRP 14.20

- 100% polyester wicking knit
- 100% Coolmax™ lining on white
- Tag-free label
- Covered elastic waistband with inside drawcord



BLACK  
080



NAVY  
065



ROYAL  
060



SCARLET  
083



WHITE  
005





321552  
**Elite Horizontal**

321562  
pg. 35  
**Elite Block**



321552  
**Elite Horizontal**

325462



For available design lines visit [augustasportswear.com/sublimation](http://augustasportswear.com/sublimation)

## LADIES FREESTYLE SUBLIMATED ELITE JERSEY

**321552** Ladies XS-2XL MSRP 53.40

- 87% polyester/13% spandex with Coolcore® technology
- 92% polyester/8% spandex mesh shoulder & back inserts with Coolcore® technology
- Garment protects against the sun with 50+ UPF
- Tag-free label
- Two piece collar
- Set-in sleeves

COORDINATING ADULT/YOUTH  
**321550/321551** pg. 7



**Peru**



**Corner Kick**



COORDINATING ADULT/YOUTH  
**325460/325461** pg. 7

**NEW**

## LADIES PLAY90 COOLCORE® SHORTS

**325462** Ladies XS-2XL MSRP 22.00

- 88% polyester/12% elastane Coolcore® with color secure® technology that helps prevent dye migration
- Garment protects against the sun with 50+ UPF
- Tag-free label
- Covered elastic waistband with inside drawcord
- 5-inch inseam



BLACK  
080

GRAPHITE  
059

NAVY  
065

ROYAL  
060

WHITE  
005

SCARLET  
083



321552  
**Elite  
Vertical**

325462







321557  
**Elite Vertical**

325462  
pg. 33



321557  
**Elite Horizontal**

321562  
**Elite Block**



For available design lines visit  
[augustasportswear.com/sublimation](http://augustasportswear.com/sublimation)



**NEW**

### LADIES FREESTYLE SUBLIMATED ELITE LONG SLEEVE JERSEY

**321557** Ladies XS-2XL MSRP 61.40

- 87% polyester/13% spandex with Coolcore® technology
- 92% polyester/8% spandex mesh shoulder & back inserts with Coolcore® technology
- Garment protects against the sun with 50+ UPF
- Tag-free label
- Two piece collar
- Set-in sleeves

COORDINATING ADULT/YOUTH  
**321555/321556** pg. 9



**Gradient**



**Elite Block**



### LADIES FREESTYLE SUBLIMATED ELITE 5" SHORTS

**321562** Ladies XS-2XL MSRP 45.80

- 87% polyester/13% spandex elastane with Coolcore® technology
- Garment protects against the sun with 50+ UPF
- Tag-free label
- Covered elastic waistband with inside drawcord
- 5-inch inseam

COORDINATING ADULT/YOUTH  
**321560/321561** pg. 9



**Optic Stripe**



**Z Stripe**



321557  
**Elite  
Lightning**

321562  
**Elite Block**





321522  
**Diamond**  
Fade



321812  
**Diamond**  
Fade



321522  
**Peru**



321812  
**Twin**  
Stripe





For available design lines visit  
[augustasportswear.com/sublimation](http://augustasportswear.com/sublimation)



### LADIES FREESTYLE TURBO SUBLIMATED V-NECK JERSEY

**321522** Ladies S-2XL MSRP 41.00

- 100% polyester smooth wicking knit
- Garment protects against the sun with 50+ UPF
- Tag-free label
- Raglan sleeves



**Catalan**



**Z-Stripe**



**Optic**



**Clean Sheet**



**Whirlwind**



**Center Stripe**



### LADIES FREESTYLE TURBO SUBLIMATED SHORTS

**321812** Ladies S-2XL MSRP 41.00

- 100% polyester wicking smooth knit
- Garment protects against the sun with 50+ UPF
- Tag-free label
- Covered elastic waistband with inside drawcord
- 5-inch inseam



**Clean Sheet**



**Whirlwind**



**Center Stripe**







Back

COORDINATING ADULT/YOUTH  
322990/322991 pg. 17



NEW

**LADIES HAWK EVOLUTION JERSEY**

**322992** Ladies XS-2XL MSRP 20.00

- 100% polyester wicking knit with color secure® technology that helps prevent dye migration
- 90% polyester/10% spandex wicking mesh inserts with color secure® technology
- Tag-free label
- Low profile tapered collar
- Raglan sleeves
- Side vent detail



BLACK/WHITE 420  
COL BLUE/BLACK 292  
DK GREEN/WHITE 438  
GOLD/WHITE 245  
GRAPHITE/WHITE R04



KELLY/BLACK 342  
MAROON/WHITE 380  
NAVY/LIME 666  
NAVY/WHITE 301  
ORANGE/WHITE 320



POWER BLUE/WHITE 834  
POWER ORANGE/BLACK Y59  
POWER YELLOW/BLACK 457  
PURPLE/WHITE 450  
ROYAL/GOLD 281



ROYAL/WHITE 280  
SCARLET/WHITE 408  
SILVER/BLACK 098  
WHITE 005  
TEAL/BLACK 435





COORDINATING ADULT/YOUTH  
6907/6908 pg. 23



### LADIES CUTTER+ V-NECK JERSEY

<b>6915</b>	Ladies	XS-2XL	MSRP 20.00
<b>6916</b>	Girls	S-L	MSRP 19.00

- 96% polyester/4% spandex lightweight knit with color secure® technology that helps prevent dye migration
- Garment protects against the sun with 50+ UPF
- Tearaway label
- Raglan sleeves



BLACK/ WHITE 420	COLUMBIA BLUE/ WHITE 293	DARK GREEN/ WHITE 438	GOLD/ WHITE 245	GRAPHITE/ WHITE R04	LIME/ ROYAL O3W
------------------------	-----------------------------------	--------------------------------	-----------------------	---------------------------	-----------------------



MAROON/ WHITE 380	NAVY/ WHITE 301	ORANGE/ WHITE 320	PURPLE/ WHITE 450	ROYAL/ WHITE 280	SCARLET/ WHITE 408
-------------------------	-----------------------	-------------------------	-------------------------	------------------------	--------------------------



TEAL/ WHITE 331	VEGAS GOLD/ WHITE 250	WHITE/ BLACK 226	WHITE/ ROYAL 220	WHITE/ SCARLET 235	WHITE 005
-----------------------	--------------------------------	------------------------	------------------------	--------------------------	--------------



CUTTER



COORDINATING ADULT/YOUTH  
1517/1518 pg. 25



### LADIES CUTTER JERSEY

<b>1522</b>	Ladies	S-2XL	MSRP 16.40
<b>1523</b>	Girls	S-L	MSRP 15.40

- 100% polyester wicking knit with color secure® technology that helps prevent dye migration
- 92% polyester/8% spandex wicking pinhole mesh underarms
- Tag-free label
- Raglan sleeves
- Contoured bottom



BLACK/GOLD 421    BLACK/WHITE 420    DARK GREEN/WHITE 438    MAROON/WHITE 380    NAVY/WHITE 301    ORANGE/WHITE 320



POWER PINK/WHITE 468    PURPLE/WHITE 450    ROYAL/ORANGE 284    ROYAL/WHITE 280    RED/BLACK 407    RED/WHITE 400



VEGAS GOLD/WHITE 250    WHITE/BLACK 226    WHITE/NAVY 221    WHITE/RED 225    WHITE/ROYAL 220





229579

229431

229580

COORDINATING HOODIE  
222584



Mesh



Zippered leg



229779

229007

229780





Ladies Fit



Zipper on Outside Lower Leg



### LIMITLESS JACKET

<b>229579</b>	Adult	S-3XL	MSRP 50.20
<b>229679</b>	Youth	S-XL	MSRP 49.20
<b>229779</b>	Ladies	XS-2XL	MSRP 50.20

- Dry-Excel™ 100% polyester wicking double knit with mesh texture
- Ladies' fit on 229779
- Raglan sleeves
- Front zippered pockets



BLACK/WHITE 420    NAVY/WHITE 301    CARBON/WHITE F52    ROYAL/WHITE 280    SCARLET/WHITE 408    BLACK/BLACK 425    MAROON/WHITE 380



DARK GREEN/WHITE 438    BLACK/WHITE/GOLD 532    NAVY/WHITE/GOLD W57    BLACK/WHITE/ORANGE W12    BLACK/WHITE/SCARLET C39    NAVY/WHITE/SCARLET W53



### LIMITLESS PANT

<b>229580</b>	Adult	S-3XL	MSRP 45.60
<b>229680</b>	Youth	S-XL	MSRP 44.60
<b>229780</b>	Ladies	XS-2XL	MSRP 45.60

- Dry-Excel™ 100% polyester wicking double knit mesh texture
- Pinhole micromesh back knee inserts
- Ladies' fit on 229780
- Covered elastic waistband with inside drawcord
- Side seam pockets
- Tapered leg
- Zipper on outside lower leg



BLACK/BLACK 425    BLACK/WHITE 420    CARBON/WHITE F52    DARK GREEN/WHITE 438    MAROON/WHITE 380    NAVY/WHITE 301    ROYAL/WHITE 280    SCARLET/WHITE 408





COORDINATING PULLOVER  
229533/229633/229733



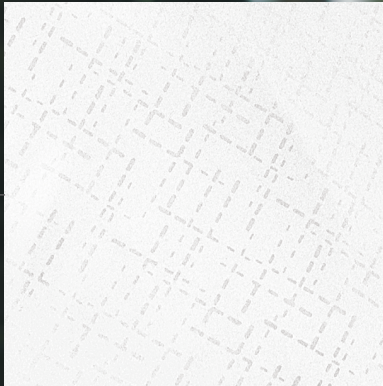
229528

229728

229431

229731

229531



Embossed Pattern Insert



Ladies Fit



**SERIESX HOODED JACKET**

<b>229528</b>	Adult	S-3XL	MSRP 68.00
<b>229628</b>	Youth	S-XL	MSRP 67.00
<b>229728</b>	Ladies	XS-2XL	MSRP 68.00

- Micron™ polyester is a lightweight, wind/water-resistant fabric
- 100% polyester micromesh lining
- Ladies' fit on 229728
- 3-piece hood with spandex binding
- Set-in sleeves
- Front zippered pockets
- Elastic cuffs
- Adjustable bottom hem with hidden shockcord closure in right pocket on Adult
- Alternate pants: 229095



BLACK/ WHITE 420	CARBON/ WHITE F52	NAVY/ WHITE 301	BLACK/ ORANGE 423	BLACK/ SCARLET 500	DARK GREEN/ WHITE 438	MAROON/ WHITE 380	NAVY/ SCARLET S20	ROYAL/ WHITE 280	SCARLET/ WHITE 408
------------------------	-------------------------	-----------------------	-------------------------	--------------------------	--------------------------------	-------------------------	-------------------------	------------------------	--------------------------



Zipper on  
Outside  
Lower Leg



**SERIESX PANT**

<b>229531</b>	Adult	S-3XL	MSRP 54.60
<b>229631</b>	Youth	S-XL	MSRP 53.60
<b>229731</b>	Ladies	XS-2XL	MSRP 54.60

- Micron™ polyester is a lightweight, wind/water-resistant fabric
- 100% polyester micromesh lining
- Ladies' fit on 229731
- Exposed brushed elastic waistband with inside drawcord
- Side seam pockets
- Tapered leg
- Articulated seaming at the knees
- Covered elastic cuff at leg opening
- Zipper on outside lower leg



BLACK 080	CARBON J96	NAVY 065	BLACK/ WHITE 420	ROYAL/ WHITE 280	SCARLET/ WHITE 408	DARK GREEN/ WHITE 438	MAROON/ WHITE 380
--------------	---------------	-------------	------------------------	------------------------	--------------------------	--------------------------------	-------------------------



Back Welt  
Pocket





## RETRO COLLECTION



Ladies Fit



Zipper on Outside Lower Leg



### RETRO GRADE JACKET

<b>229561</b>	Adult	S-3XL	MSRP 66.60
<b>229661</b>	Youth	S-XL	MSRP 65.60
<b>229761</b>	Ladies	XS-2XL	MSRP 66.60

- Dry-Excel™ 100% polyester performance terry
- Ladies' fit on style 229761
- 3-piece mesh lined hood with spandex binding
- Raglan sleeves
- Front pockets
- Spandex bound cuff

AVAILABLE IN ADULT & LADIES ONLY



BLACK/  
ORANGE  
423

BLACK/  
SCARLET  
500

BLACK/  
WHITE  
420

GRAPHITE/  
WHITE  
R04

PURPLE/  
WHITE  
450

FOREST/  
WHITE  
436

MAROON/  
WHITE  
380



NAVY/  
SCARLET  
S20

NAVY/  
WHITE  
301

ROYAL/  
WHITE  
280

SCARLET/  
WHITE  
408



### RETRO GRADE PANT

<b>229562</b>	Adult	S-3XL	MSRP 55.60
<b>229662</b>	Youth	S-XL	MSRP 54.60
<b>229762</b>	Ladies	XS-2XL	MSRP 55.60

- Dry-Excel™ 100% polyester performance terry
- Ladies' fit on style 229762
- Exposed brushed elastic waistband with inside drawcord
- Front pockets
- Back welt pocket
- Tapered leg

AVAILABLE IN ADULT & LADIES ONLY



BLACK/  
WHITE  
420

NAVY/  
WHITE  
301

ROYAL/  
WHITE  
280

GRAPHITE/  
WHITE  
R04

SCARLET/  
WHITE  
408

PURPLE/  
WHITE  
450

FOREST/  
WHITE  
436

MAROON/  
WHITE  
380



Ladies Fit



Zipper on  
Outside  
Lower Leg



### CROSTOWN JACKET

<b>NEW</b>	<b>223530</b>	Adult	S-3XL	MSRP 42.00
	<b>223630</b>	Youth	S-L	MSRP 41.00
	<b>223730</b>	Ladies	S-2XL	MSRP 42.00

- Dry-Excel™ 100% polyester double-knit
- Dry-Excel™ 100% polyester mesh inserts
- Ladies' fit on style 223730
- Set-in sleeves
- Front zippered pockets
- Open bottom
- Dropped tail



BLACK/  
BLACK  
425

BLACK/  
WHITE  
420

GRAPHITE/  
WHITE  
RO4

NAVY/  
WHITE  
301

ROYAL/  
WHITE  
280

SCARLET/  
WHITE  
408

WHITE/  
BLACK  
226



### CROSTOWN PANT

<b>NEW</b>	<b>223531</b>	Adult	S-3XL	MSRP 40.00
	<b>223631</b>	Youth	S-L	MSRP 39.00
	<b>223731</b>	Ladies	S-2XL	MSRP 40.00

- Dry-Excel™ 100% polyester double-knit
- Dry-Excel™ 100% polyester mesh inserts
- Ladies' fit on style 222731
- Covered elastic waistband with inside drawcord
- Side seam pockets
- Tapered leg



BLACK/  
BLACK  
425

BLACK/  
WHITE  
420

GRAPHITE/  
WHITE  
RO4

NAVY/  
WHITE  
301

ROYAL/  
WHITE  
280

SCARLET/  
WHITE  
408

WHITE/  
BLACK  
226





## MEDALIST 2.0 COLLECTION

COORDINATING PULLOVER  
4386/4388



Ladies Fit



Zipper on  
Outside  
Lower Leg

## MEDALIST JACKET 2.0

<b>4395</b>	Adult	S-3XL	MSRP 40.60
<b>4396</b>	Youth	XS-L	MSRP 39.60
<b>4397</b>	Ladies	XS-2XL	MSRP 40.60

- Heavyweight 100% polyester matte brushed tricot
- Ladies' fit on style 4397
- Heat sealed label
- Set-in sleeves
- Front seam pockets
- Self-fabric cuffs
- Alternate pants 7726/7728, 7731/7732/7733



## MEDALIST PANT 2.0

<b>7760</b>	Adult	S-3XL	MSRP 36.20
<b>7761</b>	Youth	XS-L	MSRP 35.20
<b>7762</b>	Ladies	XS-2XL	MSRP 36.20

- Heavyweight 100% polyester matte brushed tricot
- Ladies' fit on style 7762
- Heat sealed label
- Covered elastic waistband with inside drawcord
- Side seam pockets



Back Yoke



AVAILABLE  
IN ADULT &  
LADIES ONLY



Back



Heal/Toe Construction



Back



Uncuffed

Heal/Toe Construction



## IMPACT+

NEW

### IMPACT+ CHILL SOCCER SOCKS



**329130** Large (10-13) MSRP 14.00  
Medium (9-11)  
Small (7-9)

- Made from Repreve® 93% recycled polyester/ 6% rubber/1% other fibers
- Soil-release properties
- Knee-length sock with fold-down cuff
- Extra cushioning and support in areas of the foot and ankle that are susceptible to rubbing, impact or injury
- Arch compression reduces fatigue and aids circulation
- Left and right sock construction for a better fit



BLACK/ GRAPHITE R17 DK GREEN/ BLACK 444 GRPHITE/ BLACK 172 MAROON/ BLACK 388 NAVY/ GRAPHITE S21 ROYAL/ BLACK 289 SCARLET/ BLACK 406 WHITE/ BLACK 226

## IMPACT+

### IMPACT+ SOCCER SOCKS



**329120** Large (10-13) MSRP 11.60  
Adult Medium (9-11)  
Small (7-9)

- 85% nylon/7% polyester/5% rubber/3% spandex
- Knee-length sock with fold-down cuff
- Extra cushioning and support in areas of the foot and ankle that are susceptible to rubbing, impact or injury
- Arch compression reduces fatigue and aids circulation



BLACK/ WHITE/ GRAPHITE 355 DARK GREEN/ WHITE/ GRAPHITE 192 GRPHITE/ WHITE/ BLACK 196 KELLY/ WHITE/ GRAPHITE 65E MAROON/ WHITE/ GRAPHITE 392 NAVY/ WHITE/ GRAPHITE 372 ROYAL/ WHITE/ GRAPHITE 191 ROYAL/ ATHLETIC GOLD/ GRAPHITE 64E SCARLET/ WHITE/ GRAPHITE G14 WHITE 005

### SOCCER SOCKS

**6031** Large (10-13) MSRP 8.00  
Medium (9-11)  
Small (7-9)

- 80% acrylic/15% nylon/5% elastic
- Knee-length tube sock with fold-down cuff
- Fully cushioned foot



BLACK 080 GOLD 025 KELLY 030 NAVY 065 ORANGE 029 PURPLE 050 RED 040 ROYAL 060 WHITE 005

NEW

### CORE MULTI-SPORT SOCKS

**6922** Large (10-13) MSRP 4.40  
Medium (9-11)  
Small (7-9)  
X-Small (5-7)

- 95% polyester/15% rubber
- Knee-length tube sock



BLACK 080





Inside divider for shoes or damp items



Mesh ball holder fits volleyball, soccer or basketballs



Without mesh ball holder

Mesh ball holder fits volleyball, soccer or basketballs, & stashes away when not in use



Reinforced multiuse side pockets with pass-thru strap for bat or lacrosse stick



## FREE FORM BACKPACK

327895 13" W x 19" H x 9"D MSRP 43.00

- 900-denier heavyweight 100% polyester with PU coating
- Matte PVC bottom and sides for durability
- Large main compartment for easy decoration
- Zippered pocket with brushed interior for valuables
- Two mesh side pockets
- Smooth finish top handle for comfort
- Padded back & shoulder straps
- Hidden key clip
- Internal zippered mesh valuables pocket



BLACK Q80

CARBON HEATHER E83

GRAPHITE Q59

NAVY Q65

ROYAL Q60

SCARLET Q83



## ALL SPORT BACKPACK

327890 12"W x 18.5"H x 7"D MSRP 42.40

- 100% polyester heavy denier
- Large main interior compartment
- Front zipper pocket with deep, interior pouch holds shoes or accessories
- Side pouch pockets for water bottle with pass-thru for lacrosse stick or bat



BLACK/ GRAPHITE/ BLACK Q92

GRAPHITE/ GRAPHITE/ BLACK Q83

FOREST/ GRAPHITE/ BLACK Q88

MAROON/ GRAPHITE/ BLACK Q89

NAVY/ GRAPHITE/ BLACK Q93



ORANGE/ GRAPHITE/ BLACK Q90

PURPLE/ GRAPHITE/ BLACK Q91

ROYAL/ GRAPHITE/ BLACK Q84

SCARLET/ GRAPHITE/ BLACK Q86



NEW

### UNITED BACKPACK

327930 11.5"W x 19"H x 9.5"D MSRP 61.00

- 600-denier polyester with PVC coating
- 210-denier nylon with PVC coating
- Large main interior compartment with two corded zipper pulls
- Large front ventilated compartment with two corded zipper pulls
- Zippered pocket with brushed interior for valuables
- Front pocket with corded zipper pull with hidden inside mesh ball holder that fits Volleyball, Soccer or Basketballs
- Two mesh side pockets
- Adjustable buckles on sides to secure baseball bat
- Internal zippered mesh valuables pocket
- Key clip inside main compartment
- Padded back for support and comfort
- Web handle at top of backpack
- Adjustable padded shoulder straps



BLACK  
080

GRAPHITE/  
BLACK  
172

NAVY/  
BLACK  
308



### PLAYER BACKPACK

327850 18"W x 17"H x 9"D MSRP 39.40

- Heavy duty 600-denier polyester with soft PVC backing
- Adjustable padded shoulder straps
- Hand strap



ATHLETIC  
GOLD/  
BLACK/  
WHITE  
657

BLACK/  
BLACK/  
WHITE  
420

FOREST/  
BLACK/  
WHITE  
148

GRAPHITE/  
BLACK/  
WHITE  
U73

MAROON/  
BLACK/  
WHITE  
524



NAVY/  
BLACK/  
WHITE  
311

ORANGE/  
BLACK/  
WHITE  
322

PURPLE/  
BLACK/  
WHITE  
497

ROYAL/  
BLACK/  
WHITE  
526

SCARLET/  
BLACK/  
WHITE  
952

Mesh paneled  
zippered  
interior ball  
compartment

Mesh ball  
holder fits  
volleyball,  
soccer or  
basketballs



Two zippered side  
compartments  
with mesh panels





Back



Back





### COOLCORE® LONG SLEEVE COMPRESSION TEE



**R20CPM** Adult S-3XL MSRP 35.80

- 84% polyester/16% spandex elastane Xtreme compression cloth with Coolcore® technology
- 92% polyester/8% elastane stretch mesh inserts with Coolcore® technology
- Garment protects against the sun with 50+ UPF
- Tag-free label
- Raglan sleeves



### COOLCORE® HALF SLEEVE COMPRESSION TEE



**R21CPM** Adult S-3XL MSRP 33.00

- 84% polyester/16% spandex elastane Xtreme compression cloth with Coolcore® technology
- 92% polyester/8% elastane stretch mesh insert on center back and underarm
- Garment protects against the sun with 50+ UPF
- Tag-free label
- Raglan sleeves
- Dropped tail



### COOLCORE® COMPRESSION 7/8 TIGHT



**R23CPM** Adult XS-3XL MSRP 33.80

- 86% polyester/14% spandex elastane Xtreme compression cloth with Coolcore® technology
- 92% polyester/8% elastane stretch mesh insert at back of knee and gusset
- Garment protects against the sun with 50+ UPF
- Ultra tight fit
- Tag-free label
- Branded soft brushed back exposed elastic waistband provides comfort









# MOMENTUM TEAM COLLECTION



## MOMENTUM TEAM TEE

**223501** Adult S-3XL MSRP 15.40  
4XL-6XL in select colors

**223601** Youth XXS-XL MSRP 14.40

**223701** Ladies S-3XL MSRP 15.40

- Dry-Excel™ 100% polyester interlock smooth knit with color secure® technology that helps prevent dye migration
- Ladies' Fit on style 223701
- Tag-free label
- Contrast color V-neck on Ladies
- Garment protects against the sun with 45+ UPF
- Set-in sleeves

AVAILABLE IN ADULT 4XL-6XL



BLACK/  
IRON  
62U

BLACK/  
WHITE  
420

NAVY/  
WHITE  
301

ROYAL/  
WHITE  
280

SCARLET/  
BLACK  
406

WHITE/  
IRON  
61U

AVAILABLE IN ADULT  
S-3XL & YOUTH



DK GREEN/  
BLACK  
444

ORANGE/  
WHITE  
320

AVAILABLE IN ADULT  
S-3XL & LADIES



COLUMBIA  
BLUE/  
WHITE  
293

AVAILABLE IN ADULT S-3XL



GOLD/  
WHITE  
245

KELLY/  
WHITE  
340

ROYAL/  
GOLD  
281

SCARLET/  
NAVY  
W86

VEGAS GOLD/  
BLACK  
252

AVAILABLE IN ADULT S-3XL, YOUTH & LADIES



IRON/  
WHITE  
99D

MAROON/  
BLACK  
388

PURPLE/  
BLACK  
496

ROYAL/  
BLACK  
289

SCARLET/  
WHITE  
408





# COOLCORE®



**NEW**

## COOLCORE® ESSENTIAL TEE

<b>222136</b>	Adult	S-3XL	MSRP 17.80
<b>222236</b>	Youth	S-XL	MSRP 16.80
<b>222336</b>	Ladies	XS-2XL	MSRP 17.80

- 88% polyester/12% elastane Coolcore® with color secure® technology that helps prevent dye migration
- Garment protects against the sun with 50+ UPF
- Tag-free label
- Crew neck
- Set-in sleeves with rolled forward shoulder seam



ATHLETIC GREY  
009

BLACK  
080

COL BLUE  
089

DK GREEN  
035



IRON  
98D

MAROON  
745

NAVY  
065

OLIVE  
039



PURPLE  
747

ROYAL  
060

SCARLET  
083

WHITE  
005



Non-branded tagless label



## NEXGEN WICKING TEE

<b>790</b>	Adult	S-3XL	MSRP 7.20
		4XL in select colors	
<b>791</b>	Youth	XS-XL	MSRP 7.20
<b>1790</b>	Ladies	XS-3XL	MSRP 7.20

- 100% polyester wicking knit with color secure® technology that helps prevent dye migration
- Ladies' fit on style 1790
- Non-branded tag-free label
- Set-in sleeves
- Safety Yellow is ANSI certified

### AVAILABLE IN ADULT 4XL



BLACK 080    NAVY 065    ROYAL 060    SCARLET 083    SILVER 099    WHITE 005

### AVAILABLE IN ADULT & YOUTH ONLY



OLIVE 039    TEAL 063    ELECTRIC ORANGE 79N    VEGAS GOLD 023

### AVAILABLE IN ADULT ONLY



COYOTE 208



COLUMBIA BLUE 089    DARK GREEN 035    GOLD 025    GRAPHITE 059    KELLY 030    MAROON 745

### AVAILABLE IN ADULT & LADIES ONLY



ORANGE 029    POWER BLUE 812    POWER PINK 809    PURPLE 747    SAFETY YELLOW\* 243

\*SAFETY YELLOW IS ANSI CERTIFIED





# MOMENTUM COLLECTION



## MOMENTUM TEE

<b>222818</b>	Adult	S-4XL	MSRP 11.00
		5XL & 6XL in select colors	
<b>222819</b>	Youth	XXS-XL	MSRP 11.00
<b>222820</b>	Ladies	S-3XL	MSRP 11.00

- Dry-Excel™ 100% polyester interlock smooth knit with color secure® technology that helps prevent dye migration
- Ladies' fit on 222820
- Tag-free label
- Garment protects against the sun with 45+ UPF
- Set-in sleeves

AVAILABLE IN ADULT 5XL-6XL



BLACK 080	GRAPHITE 059	NAVY 065	ROYAL 060	SCARLET 083	SILVER 099	WHITE 005
--------------	-----------------	-------------	--------------	----------------	---------------	--------------

AVAILABLE IN ADULT/YOUTH/LADIES ONLY



CARDINAL J36	DARK GREEN 035	ELECTRIC ORANGE 79N	KELLY GREEN 030	VEGAS GOLD 023
-----------------	-------------------	------------------------	--------------------	-------------------



COLUMBIA BLUE 089	ELECTRIC YELLOW T52	GOLD 025	LIME 096	MAROON 745	ORANGE 029
----------------------	------------------------	-------------	-------------	---------------	---------------

AVAILABLE IN ADULT & YOUTH ONLY



POWER BLUE 812	POWER PINK 809	PURPLE 747	TEAL 063	SAFETY YELLOW 243	OLIVE 039
-------------------	-------------------	---------------	-------------	----------------------	--------------



MOMENTUM COLLECTION



**NEW**

**MOMENTUM SHORTS**

<b>223522</b>	Adult	S-3XL	MSRP 20.00
<b>223622</b>	Youth	S-XL	MSRP 19.00
<b>223722</b>	Ladies	S-3XL	MSRP 20.00

- Dry-Excel™ 100% polyester interlock smooth knit with color secure® technology that helps prevent dye migration
- Garment protects against the sun with 45+ UPF
- Tag-free label
- 2-inch brushed back elastic waistband with inside drawcord
- Side seam pockets
- Side vents



6-inch  
inseam  
(Youth  
inseam  
graded)



5-inch  
inseam

Ladies Fit



BLACK  
080

GRAPHITE  
059

NAVY  
065



ROYAL  
060

SCARLET  
083

SILVER  
099







### SCRIMMAGE VEST

<b>321200</b>	Adult	One Size	MSRP 4.60
<b>321201</b>	Youth	XS	MSRP 3.60
<b>321201</b>	Youth	One Size	MSRP 3.60

- 100% polyester tricot mesh
- Improved fit, longer length



### OCTANE SHORTS

<b>1425</b>	Adult	S-3XL	MSRP 8.40
<b>1426</b>	Youth	XXS-L	MSRP 8.40

- 100% polyester wicking knit
- Full-cut
- Tag-free label
- Covered elastic waistband with inside drawcord
- 7-inch inseam
- Youth inseam graded



\* MAROON & PURPLE SHADES CAN VARY BY BRAND, PLEASE CONTACT OUR CUSTOMER CARE WITH QUESTIONS

