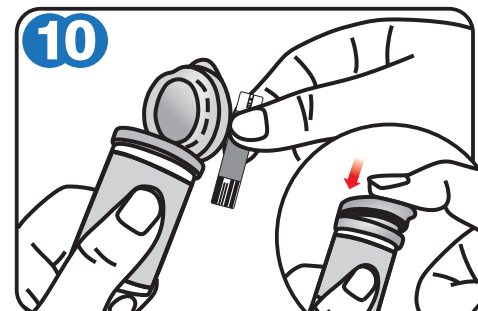
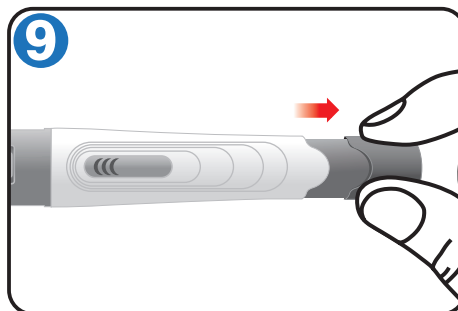
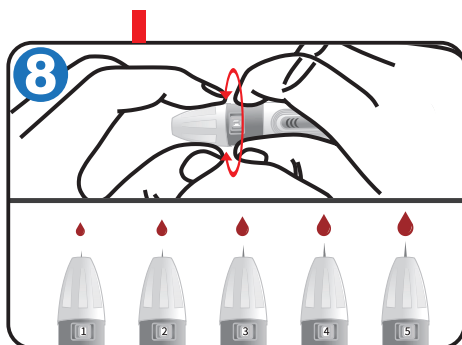
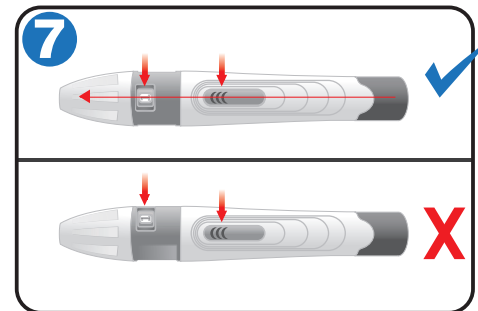
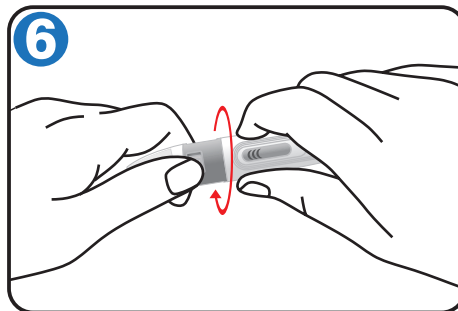
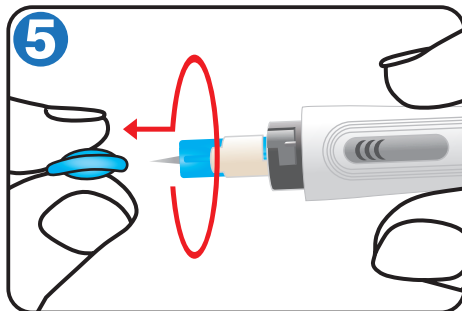
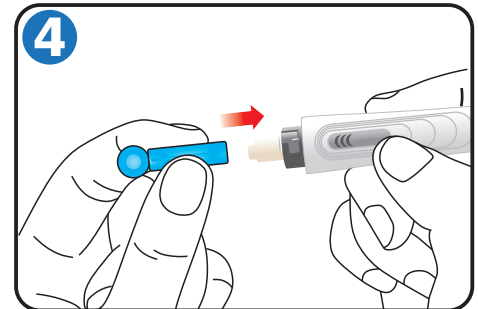
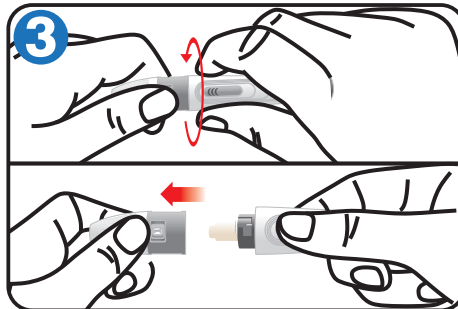
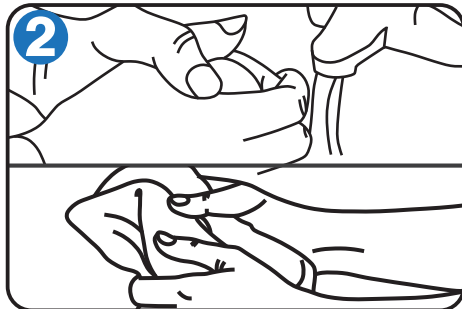
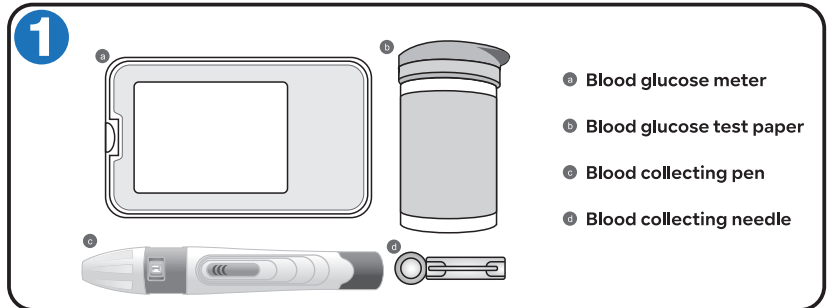
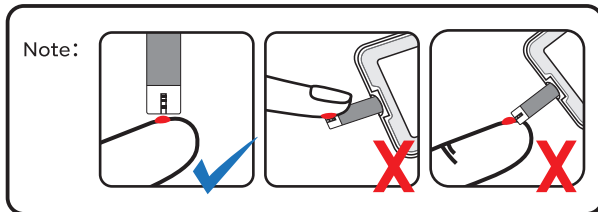


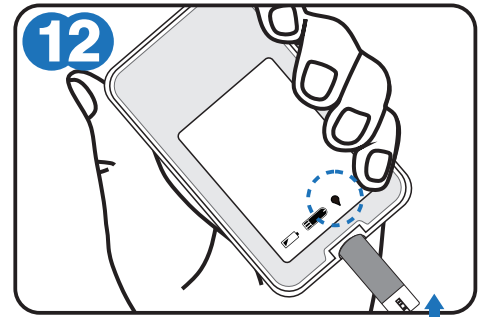
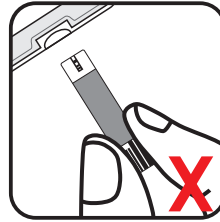
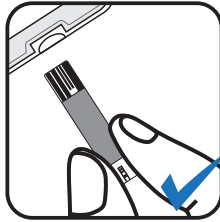
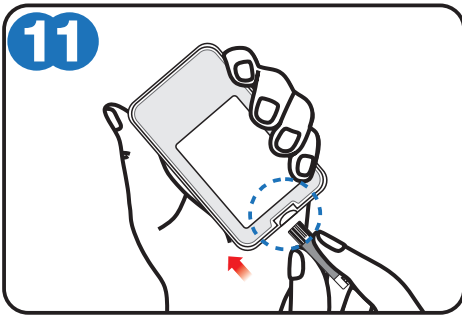
Blood Glucose Monitoring System

Quick Start User Guide

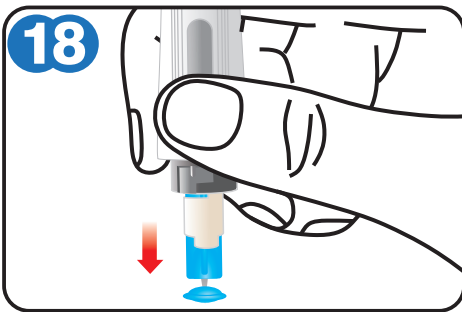
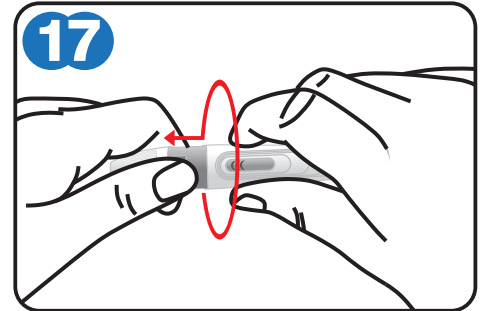
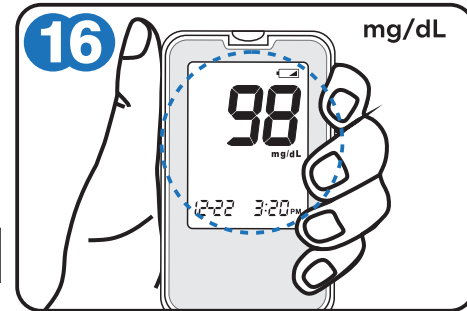
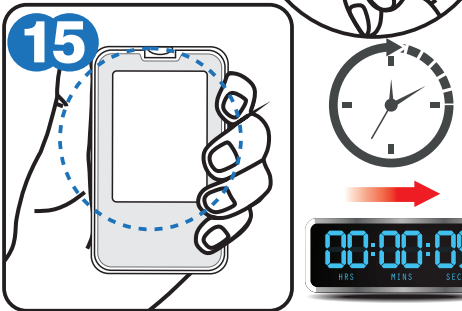
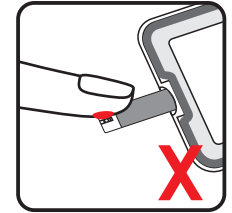
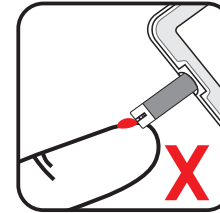
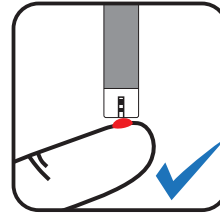
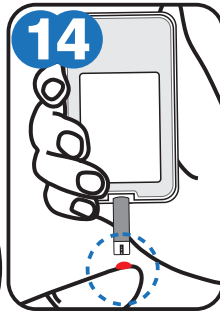
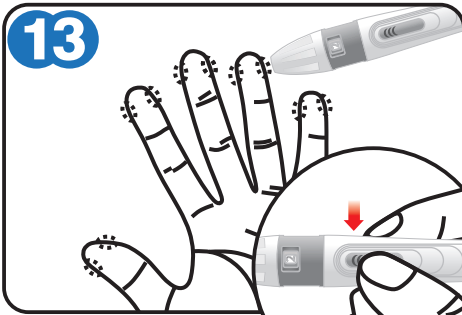
Before You Test

- Contact your Doctor or Healthcare Professional to determine how often you should test and what your target ranges are for blood glucose results.
- ALWAYS read the Owner's Booklet before testing for the first time and before using this Quick Reference Guide.





After inserting the test strip, the glucose meter will be automatically turned on, and blood drop symbol will be displayed, blood sample collecting can be started.



Warning:

- The meter and lancing device are for single patient use. Do not use on multiple patients. Do not share them with anyone including other family members.
- Please refer to your system's User's Manual for more information.

After You Test

- ✓ ALWAYS store the test strips in the original vial with the cap tightly closed.
- ✓ ALWAYS keep the cap of the test strip vial tightly closed.
- ✗ NEVER transfer test strips from one vial to another. Do not expose to heat, moisture, or humidity.
- ✗ NEVER compare your meter to other meters.
- ✗ NEVER immerse meter or test strips in liquids or place any liquids onto meter or into the Test Port.
- ✓ Store G-425-2 System in a dry place at room temperature 39.2°F-86°F(4°C-30°C) at 10%-85% relative humidity. DO NOT FREEZE.
- ✓ Dispose of used test strips and lancets in accordance with local regulations.

Additional Information

- ALL parts of your blood glucose monitoring system could carry blood-borne pathogens after use, even after cleaning and disinfecting.
- Cleaning and disinfecting the lancing device and the meter destroys most, but not necessarily all, blood-borne pathogens.
- Wash your hands thoroughly with soap and warm water before and after handling the meter, lancing device, ancets, or test strips as contact with blood presents an infection risk.
- If the meter is being operated by a second person who provides testing assistance, the meter and lancing device should be disinfected prior to use by the second person.
- It is important to keep the meter and the lancing device clean and disinfected.