



# AMETEK

## LAMB ELECTRIC

# Product Bulletin

Model: 119785-07

### SPECIAL FEATURES

- Suitable for 120 volt AC operation, 50/60 Hz
- UL recognized, category PRGY2 (E47185)
- Provision for grounding
- Skeleton frame design
- Tapered fan system
- High air flow fan system
- The Lamb vacuum motor line offers a wide range of performance levels to meet design needs

-07 Version has terminals on the power

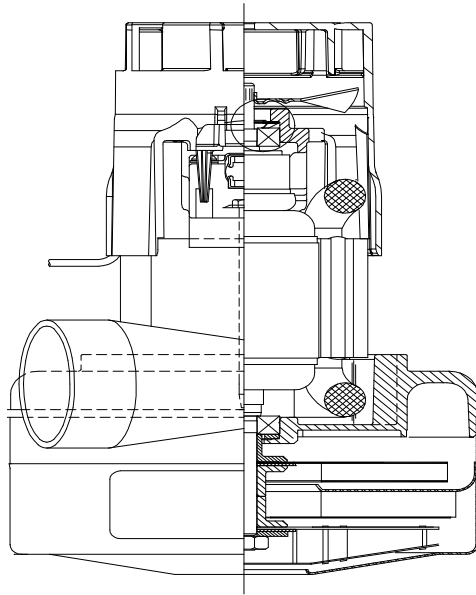


### DESCRIPTION

- Two stage Fan System
- 120 volts
- 5.7"/ 145 mm diameter
- Dual ball bearings
- Single speed
- Tangential bypass discharge
- Thermoset fan end bracket
- Thermoset commutator bracket

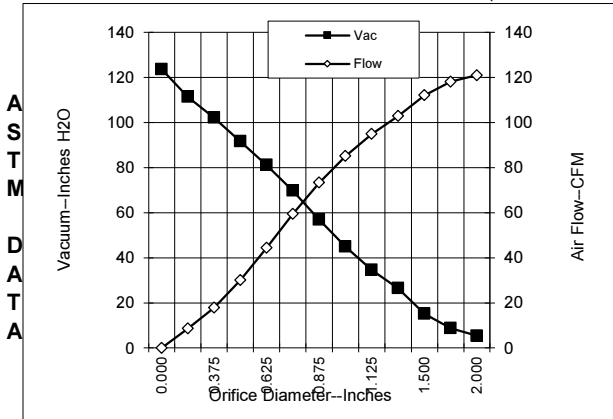
### DESIGN APPLICATION

- Equipment operating in environments not requiring separation of working air from motor ventilating air
- Designed to handle clean, dry, filtered air only

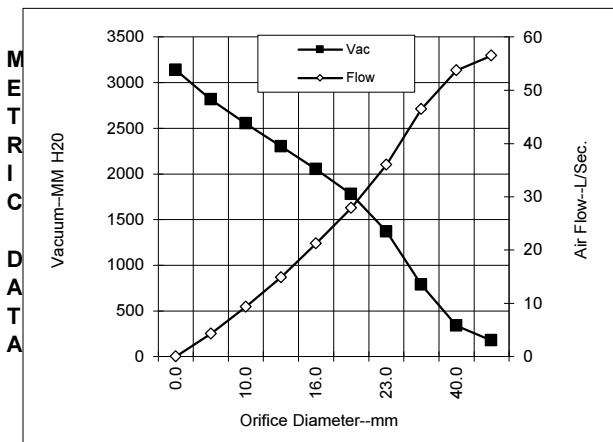


### TYPICAL MOTOR PERFORMANCE.\*

(At 120 volts, 60Hz, test data is corrected to standard conditions of 29.92 Hg, 68° F.)



Orifice (Inches)	Amps	Watts (In)	RPM	Vac (In.H2O)	Flow (CFM)	Air Watts
2.000	12.1	1407	22546	5.4	120.9	77
1.750	12.2	1411	22514	8.8	118.1	123
1.500	12.3	1422	22462	15.2	112.1	200
1.250	12.5	1442	22262	26.5	102.8	321
1.125	12.5	1451	22204	34.6	94.9	386
1.000	12.5	1451	22198	45.0	85.1	450
0.875	12.3	1428	22402	56.9	73.3	490
0.750	11.9	1380	22834	69.8	59.4	487
0.625	11.2	1303	23546	81.2	44.4	424
0.500	10.4	1210	24506	91.7	30.1	324
0.375	9.4	1105	25774	102.1	17.9	215
0.250	8.6	1013	27118	111.3	8.6	112
0.000	8.0	947	28428	123.5	0.0	0



Orifice (mm)	Amps	Watts (In)	RPM	Vac (mm H2O)	Flow (L/Sec)	Air Watts
48.0	12.1	1409	22532	175	56.5	97
40.0	12.2	1419	22478	337	53.8	177
30.0	12.5	1447	22230	786	46.5	357
23.0	12.4	1434	22351	1370	36.0	480
19.0	11.9	1378	22848	1779	27.9	486
16.0	11.2	1306	23518	2051	21.2	427
13.0	10.4	1219	24410	2303	14.9	334
10.0	9.6	1121	25584	2554	9.3	231
6.5	8.7	1018	27051	2815	4.3	117
0.0	8.0	947	28428	3137	0.0	0

Note: Metric performance data is calculated from the ASTM data above.

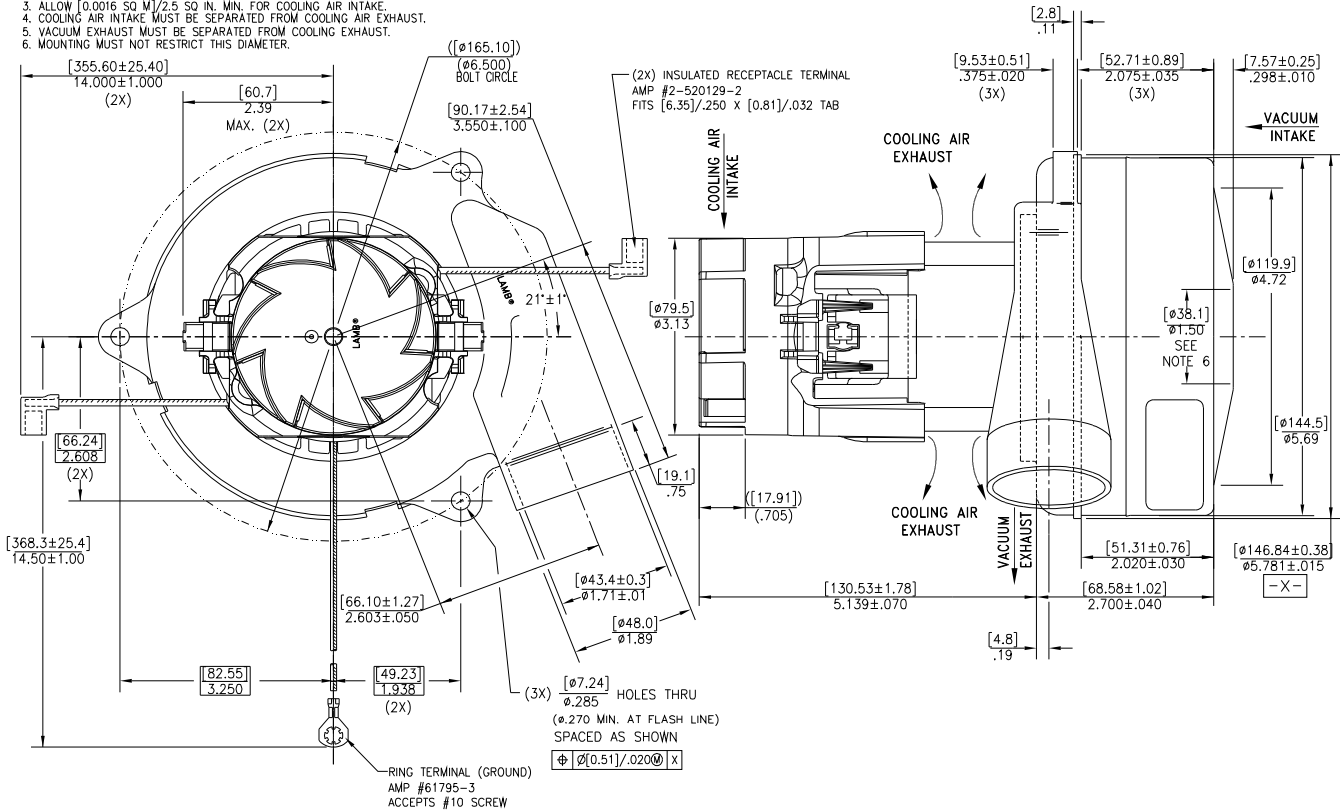
\* Data represents performance of a typical motor sampled from a large production quantity. Individual motor data may vary to normal manufacturing variations.

Test Specs: 120 volts	Minimum Sealed Vacuum: 114"	ORIFICE: 7/8"	Minimum Vacuum: 53"	Maximum Watts: 1590
-----------------------	-----------------------------	---------------	---------------------	---------------------

**DIMENSIONS**

**NOTES:**

1. POWER LEADS: 18GA STRANDED, LEADS CAN BE ANY COLOR EXCEPT GREEN OR GREEN WITH YELLOW STRIPE. GROUND LEAD: 18GA STRANDED, GREEN OR GREEN WITH YELLOW STRIPE.
2. MOTOR IDENTIFICATION: MANUFACTURER'S NAME, MODEL NUMBER, VOLTAGE, FREQUENCY, INSPECTOR'S CODE WITH "FF" SUFFIX, DATE OF MANUFACTURE, AGENCY RECOGNITION CODE, PLANT LOCATION CODE, PATENT INFORMATION "ONE OR MORE OF THE FOLLOWING PATENTS APPLY TO THIS MOTOR: 5482378; 5736805; 4669952; 4684835; 6561772". AND COUNTRY OF ORIGIN.
3. ALLOW [0.0016 SQ M]/2.5 SQ IN. MIN. FOR COOLING AIR INTAKE.
4. COOLING AIR INTAKE MUST BE SEPARATED FROM COOLING AIR EXHAUST.
5. VACUUM EXHAUST MUST BE SEPARATED FROM COOLING EXHAUST.
6. MOUNTING MUST NOT RESTRICT THIS DIAMETER.



**IMPORTANT NOTE:** Pictorial and dimensional data are subject to change without notice. Contact factory for current revision levels.

**WARNING** - Ametek/Lamb Electric thru-flow vacuum motors must never be used in applications in which wet or moist conditions are involved, where dry chemicals or other volatile materials are present or where airflow may be restricted or blocked. Such motors are designed to permit the vacuumed air to pass over the electrical winding to cool it. Thus any foam, liquid (including water), dry chemical or other foreign substance will come in contact with electrical conductors which could cause combustion (depending on volatility) or electrical shock. Failure to observe these precautions could result in property damage and severe personal injury, including death in extreme cases. All applications incorporating Lamb motors should be submitted to Underwriters Laboratories Inc. or other appropriate organizations or agencies for testing specifically related to the safety of your equipment.

**AMETEK Dynamic Fluid Solutions**  
[www.ametekdfs.com](http://www.ametekdfs.com)