



INSTALLATION GUIDE

TRIMLESS PROFILE RANGE



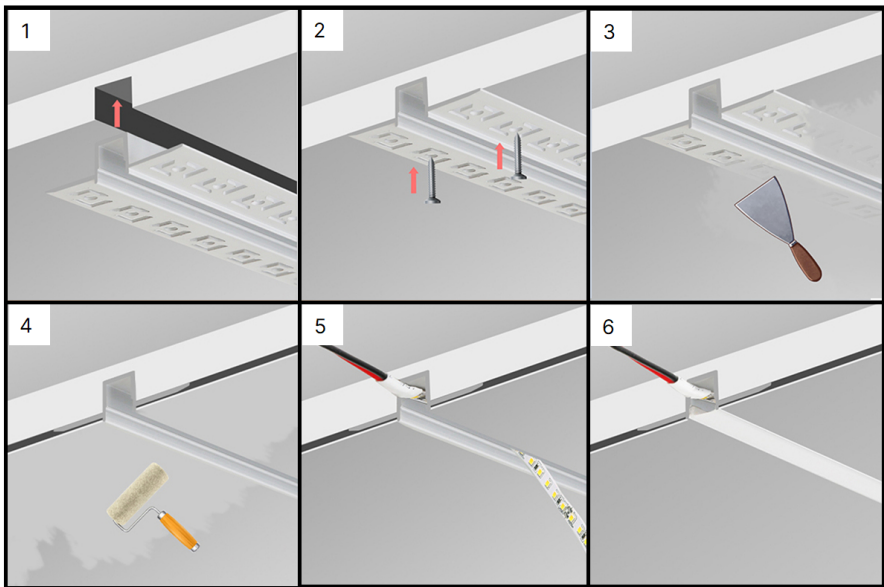
10MM INTERNAL



12MM INTERNAL



20MM INTERNAL



- 1) Mounting the profile to the area (wall or ceiling)
- 2) Screw the profile to fix in position
- 3) Plaster on the profile & area
- 4) Painting on the profile & area
- 5) Place your LED Strip inside the profile
- 6) Place the diffuser in the profile & switch on the POWER

WARNING ⚡

1. Switch off before installation.
2. Switch on only after complete installation and examination of the circuit.
3. Professional electrician for installation and maintenance only.



Turn Off
Power Supply