



# INSTALLATION GUIDE

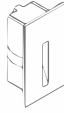
## MARKER / NICHE LIGHTS RANGE



ENZO  
⌀50



NICO  
⌀45



SOFIA  
70×35MM



MIA SQUARE  
⌀35



MIA ROUND  
⌀35



ELLA  
⌀30



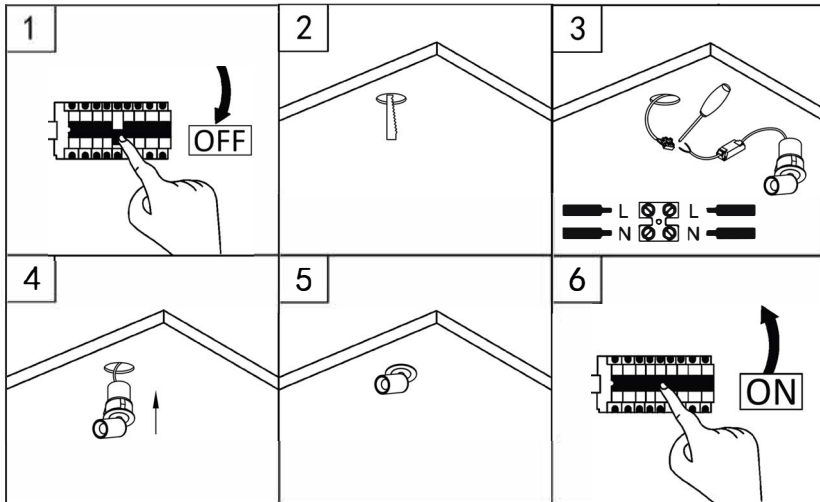
CLARA  
⌀35



MAYA  
⌀22



CHLOE  
⌀37



- 1) Please ensure Power is SWITCHED OFF
- 2) Drill holes according your fitting's cutout size
- 3) Connect the fitting to mains
- 4) Make sure the spring buckle is vertical then place the fitting into the drilled hole
- 5) Ensure the fitting is secure
- 6) Switch on the POWER

### WARNING ⚡

1. Switch off before installation.
2. Switch on only after complete installation and examination of the circuit.
3. Professional electrician for installation and maintenance only.



Turn Off  
Power Supply



# 20W MARKER LIGHT DIMMABLE DRIVER GUIDE

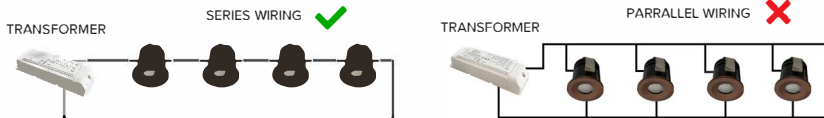
Each fitting is supplied with an in line non dimmable driver. If you do not wish to dim your light fitting you may simply carry out those 6 Steps in this installation guide.

The below instructions are when using our multi current dimmable driver to power multiple fittings.

Please be aware our multi current dimmable driver can only be used with these 6 fittings.

When using our dimmable driver you will need to cut off the standard driver which is attached to fitting and series wire this dimmable driver.

Please be aware you must wire our fittings in **Series** with this dimmable driver (**NOT PARALLEL**)



If the circuit for these fittings and driver are not wired correctly in series, it may cause all of the fittings to fail by sending a current to the led in the fitting which it is not designed to take and will therefore blow.

Though we do accept that from time to time some individual fittings do fail, if several fittings on a circuit or project fail this is a clear indicator that they have now been wired correctly.

This dimmable driver is used for multiple fittings, there are a range of current settings on our dimmable driver. **You will need to set the correct current (via the dip switches on the dimmable driver) for your fitting.**

See below which current settings need to be selected per fitting:

- Ella Marker Light – 250ma
- Clara Marker Light – 250ma
- Maya Marker Light – 250ma
- Chloe Marker Light – 600ma
- MIA Low Level – 600ma
- Sofia Low Level – 600ma

## DIP MULTIPLE CURRENT FORM

	○○○ 1 2 3	○○○	●○○	○○●	○●○	●○●	●●○	○○●●	●●●●
● ○	150mA	250mA	350mA	400mA	450mA	500mA	600mA	700mA	
ON OFF	2.050V	3.50V	3.45V	3.38V	3.35V	3.30V	3.25V	3.22V	
AC	0.15A	0.25A	0.31A	0.29A	0.29A	0.30A	0.30A	0.30A	
Rated power	7.5W	12.5W	15.75W	14.8W	14.8W	15.0W	15.0W	15.4W	
Full Load Efficiency	78%	78%	78%	78%	78%	78%	77%	76%	

Please do not turn on the **POWER** without selecting the correct current output via the dip switches. Due to it will result in the fittings failing prematurely/ fittings blowing.

**Failure to wire the fittings correctly & selecting an correct current output (ma) will void the warranty.**