

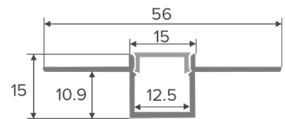
(12MM WIDTH)

TRIMLESS PLASTER-IN ALUMINIUM EXTRUSION – 12MM

FEATURES & BENEFITS

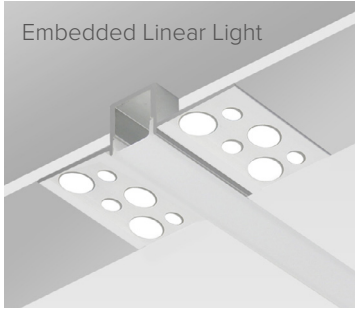
- Trimless Recessed Plaster-In Aluminium Extrusion
- 6063-T5 Aircraft Grade - Durable Aluminium
- Creates an embedded flat angle linear light effect
- Matt silver finish extrusion
- Provides good heat dissipation to LED Strip – acts as a heatsink
- Polycarbonate V2 Diffuser
- Frosted diffuser reduces glare & creates seamless diffused light output
- DOT FREE effect when using our LED Strip
- Available in 2 metres aluminium extrusion with 2 flanges
- Available with a frosted diffuser & 2 end caps
- Ideal for recessing in to plastered / drywalls and ceilings

DIMENSION

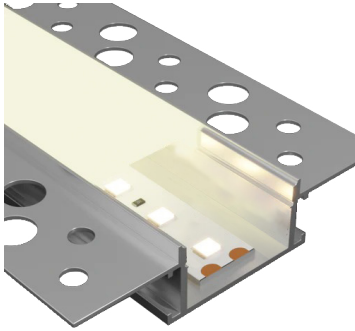


SPECIFICATIONS

Product Code	Description	Dimensions
SL-TRIM-12	2 Metres Trimless Profile with Frosted Diffuser, 2 end caps (12mm internal)	Height: 15 Inner width: 12.5 Outer width without flanges: 15 Outer width with flanges: 56



6063-T5 Aircraft Grade
Durable Aluminium



Seamless diffused light
output

