

VOL.1.02 EN



BALLAST

BL-3146

INSTRUCTION MANUAL

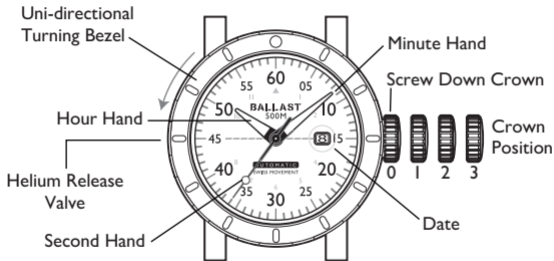
CONGRATULATIONS ON YOUR NEW BALLAST TIMEPIECE

We are inspired by the engineering and the brave individuals who inhabit and operate submarines.

Each watch design takes its build cues from these giant beasts of the sea and pays tribute to the brave navy men who inhabit them.

To ensure correct care, please take some time to review the enclosed instruction to review how to operate your watch.

AUTOMATIC 3 HANDS WITH DATE

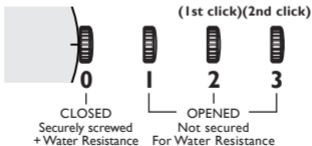


PLEASE READ THE FOLLOWING BEFORE UNSCREWING THE CROWN:

SCREW-DOWN CROWN

Screw-down crowns are used to ensure water resistance. **ALWAYS** be certain that your crown is securely screwed down (Position **[0]** is secured. Positions **[1]**, **[2]** and **[3]** are not secured for water resistance).

Do **NOT** unscrew your crown while you are in any environment where moisture is present.



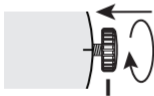
USING THE SCREW-DOWN CROWN

Do **NOT** pull the crown unless it is **UNSCREWED** first:



TO UNSCREW:

Turn the crown anti-clockwise until it turns freely without tension. **GENTLY** pull the crown out to the other desired positions for watch setting (see specific operating instructions on the following pages).



TO SCREW:

Push the crown **ALL THE WAY IN** (towards the watch) **THEN** begin to turn clockwise until it is securely screwed down.

NOTE: Failure to **SECURELY** screw down the crown after setting the watch may affect its water resistance.

**BEFORE YOU USE THIS WATCH,
IT IS RECOMMENDED THAT YOU MANUALLY WIND THE
MAINSRING TO START IT MOVING.**

THIS WATCH IS AN AUTOMATIC WATCH EQUIPPED WITH A MANUAL
WINDING MECHANISM.

WINDING THE MAINSPRING



1. Unscrew the crown by turning it anti-clockwise.



2. When it is in position **[1]**, turn the crown clockwise to wind.
Wind 5-10 times and it will start to move naturally after shaking
slightly.

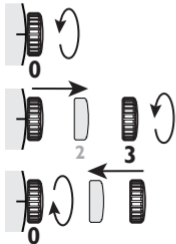


3. Push the crown in then screw it securely.

* This watch **MUST** be worn for at least 8 (Eight) hours each day to ensure it is fully wound. An automatic watch will only wind when the watch is on your wrist and your arm moves. Winding the watch by the crown will put power on the spring but not enough to allow the watch to function fully. If your watch stops overnight or loses time it means it is not being fully wound.

HOW TO SET THE TIME

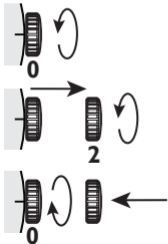
1. Unscrew the crown and pull it out to position **[3]**-(2nd click).
2. Turn the crown anti-clockwise to set the correct time.
3. Push the crown in then screw it securely.



- * Take a.m./p.m. into consideration when setting the hour and minute hands to the desired time.
- * Always be certain that your crown is **SECURELY SCREWED**; this will prevent moisture from entering in.

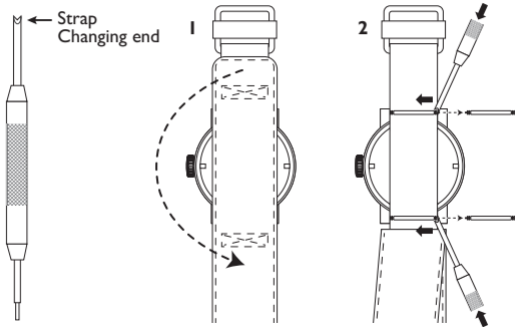
HOW TO SET THE DATE

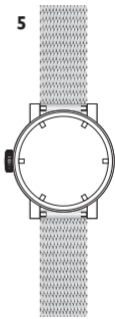
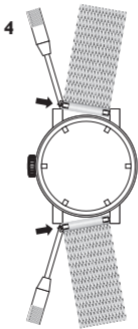
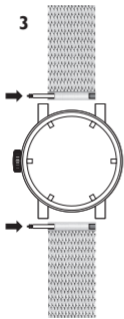
1. Unscrew the crown and pull it out to position **[2]**-(1st click).
2. Turn the crown anti-clockwise to set the correct date.
3. Push the crown in then screw it securely.



* Do not set the date between 9:00 P.M. and 4:00 A.M.

HOW TO CHANGE VELCRO STRAP TO MESH BRACELET





HELIUM RELEASE VALVE

This BALLAST timepiece is equipped with a Helium Release Valve.

It provides functionality for professional divers operating at great depths for prolonged periods of time or under saturation.

When commercial divers operate at great depths, they often spend prolonged hours in diving bells under pressure breathing a breathing gas that contains the gases helium or hydrogen. Since helium atoms are the smallest natural gas particles found in nature, these gas atoms are able to work their way inside the watch, around any o-rings or other seals the watch may feature.

This is not a problem as long as the divers stay under pressure, but when the decompression stops during resurfacing a pressure difference builds up between the trapped gas inside the watch case and its environment.

Depending on the construction of the watch case and crystal, this effect can cause damage to the watch, such as the crystal popping off.

The helium release valve does not need any manual intervention or adjustment, it automatically releases the helium or hydrogen used in the breathing gas mix trapped inside the watch case.

Please make sure to employ the screw-down crown on your timepiece for maximum water protection.



**HELIUM
RELEASE
VALVE**



GENERAL CARE

Avoid leaving your watch in locations that are subject to large temperature fluctuations or humidity, direct sunlight or strong magnetic fields.

Always rinse your watch with lukewarm water if it has been exposed to seawater. Leather is a naturally porous material, therefore you should prevent the high-quality leather straps to come into contact with oily substances, solvents, detergents or cosmetics. In this way, you will be able to prevent discolouration or premature aging of the material.

To replace the strap, please contact an authorized dealer or authorized service centre.

The water resistance of the watch cannot be guaranteed indefinitely due to wear on the seals, climatic changes, shock or chemicals substances (body moisturisers, perfumes, etc.).

We therefore recommend that you regularly check the watch's water resistance and have an authorized service centre change the seals frequently.

We recommend that you have your watch inspected every 3-4 years by our authorized dealer / authorized service centre to perform routine maintenance of all mechanical parts.

For more details, visit our website: **www.ballast1903.com**



www.ballast1903.com