



BL-3148

INSTRUCTION MANUAL

VOL. I.48 EN

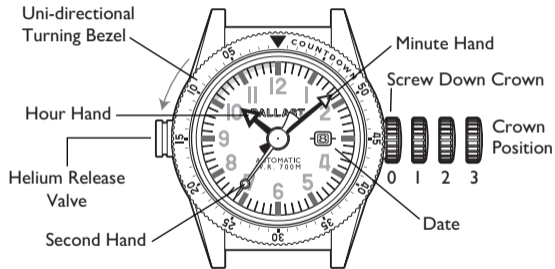
CONGRATULATIONS ON YOUR NEW BALLAST TIMEPIECE

We are inspired by the engineering and the brave individuals who inhabit and operate submarines.

Each watch design takes its build cues from these giant beasts of the sea and pays tribute to the brave navy men who inhabit them.

To ensure correct care, please take some time to review the enclosed instruction to review how to operate your watch.

AUTOMATIC 3 HANDS WITH DATE

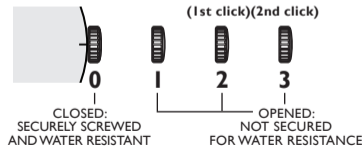


PLEASE READ THE FOLLOWING BEFORE UNSCREWING THE CROWN:

SCREW-DOWN CROWN

Screw-down crowns are used to ensure water resistance. **ALWAYS** be certain that your crown is securely screwed down (Position **[0]** is secured. Positions **[1]**, **[2]** and **[3]** are not secured for water resistance).

Do **NOT** unscrew your crown while you are in any environment where moisture is present.



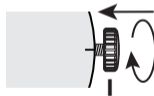
USING THE SCREW-DOWN CROWN

Do NOT pull the crown unless it is UNSCREWED first:



TO UNSCREW:

Turn the crown anti-clockwise until it turns freely without tension. **GENTLY** pull the crown out to the other desired positions for watch setting (see specific operating instructions on the following pages).



TO SCREW:

Push the crown **ALL THE WAY IN** (towards the watch) **THEN** begin to turn clockwise until it is securely screwed down.

NOTE: Failure to **SECURELY** screw down the crown after setting the watch may affect its water resistance.

**BEFORE YOU USE THIS WATCH,
IT IS RECOMMENDED THAT YOU MANUALLY WIND THE
MAINSRING TO START IT MOVING.**

THIS WATCH IS AN AUTOMATIC WATCH EQUIPPED WITH A MANUAL WINDING MECHANISM.

WINDING THE MAINSPRING



1. Unscrew the crown by turning it anti-clockwise.



2. When it is in position **[1]**, turn the crown clockwise to wind. Wind 5-10 times and it will start to move naturally after shaking slightly.

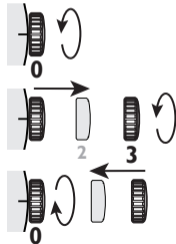


3. Push the crown in then screw it securely.

* This watch **MUST** be worn for at least 8 (Eight) hours each day to ensure it is fully wound. An automatic watch will only wind when the watch is on your wrist and your arm moves. Winding the watch by the crown will put power on the spring but not enough to allow the watch to function fully. If your watch stops overnight or loses time it means it is not being fully wound.

HOW TO SET THE TIME

1. Unscrew the crown and pull it out to position **[3]**-(2nd click).
2. Turn the crown anti-clockwise to set the correct time.
3. Push the crown in then screw it securely.

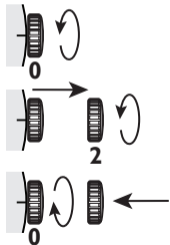


* Take a.m./p.m. into consideration when setting the hour and minute hands to the desired time.

* Always be certain that your crown is **SECURELY SCREWED**; this will prevent moisture from entering in.

HOW TO SET THE DATE

1. Unscrew the crown and pull it out to position **[2]**-(1st click).
2. Turn the crown anti-clockwise to set the correct date.
3. Push the crown in then screw it securely.

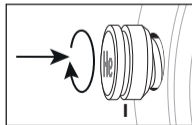


* Do not set the date between 9:00 P.M. and 4:00 A.M.

HELIUM VALVE USAGE

Your BALLAST timepiece is equipped with a Helium Release Valve.

While this is a very specialized feature that is only used in certain conditions, the below instructions should be considered if you are using your watch in conditions where Helium may be prevalent at underwater depths. While diving and use in Non-diving condition the Helium Valve should remain closed and tightly screwed in flush to the case [Fig. 1].

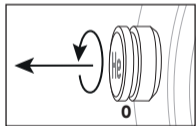


[Fig. 1]

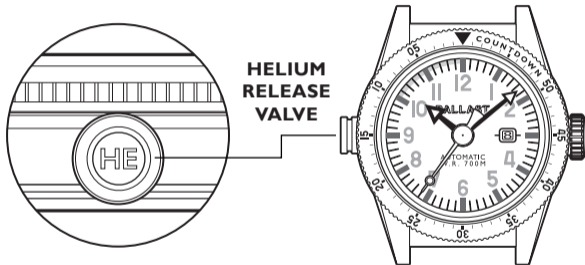
If while diving the user is exposed to a prolonged period of exposure to pressurized Helium such as decompression chamber:

Please allow the Helium release valve to regulate internal pressure of the timepiece.

Simply unscrew the valve [Fig. 2] until Helium exposure is complete.



[Fig. 2]

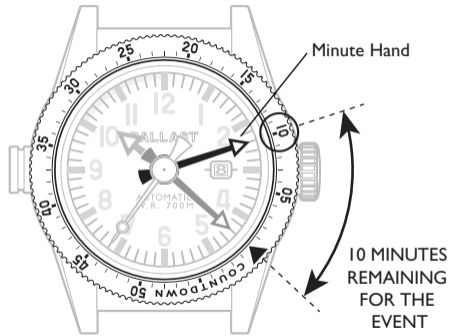


USING THE COUNTDOWN BEZEL TO MEASURE REMAINING TIME

The most common use of a countdown bezel is for measuring the remaining time in an event.

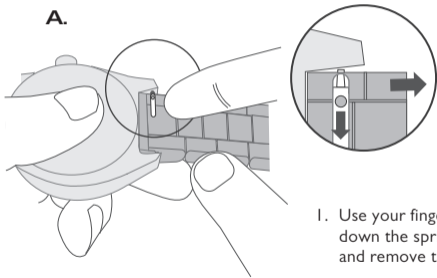
1. The minute or hour hand is used as a reference. Rotate the bezel so that the time remaining is set to dedicated hand.
2. When the hand reaches zero (or the mark "▼") on the bezel scale, the event should occur or end.

Note: The countdown measurement scale may appear on the outer bezel, rather than on the dial ring (depending on model). As shown in the illustration, the remaining time for the event is 10 minutes.



HOW TO CHANGE BRACELET TO LEATHER STRAP / RUBBER STRAP

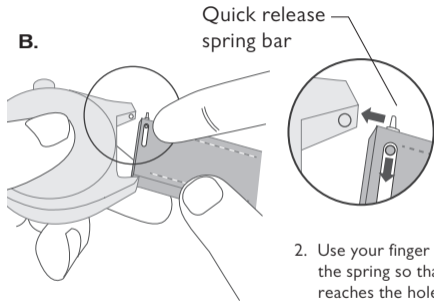
A.



1. Use your finger to Push down the spring to release and remove the bracelet.

12

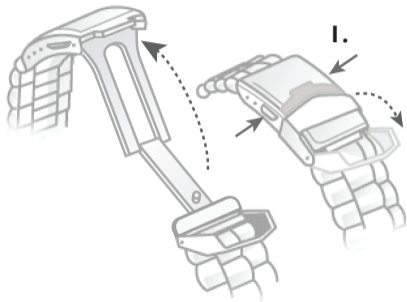
B.



2. Use your finger to push down the spring so that the pin end reaches the hole for fastening.

13

HOW TO USE A DEPLOYANT CLASP



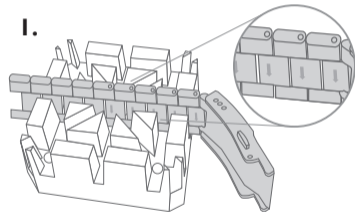
1. Press the buttons on the clasp sides.

2. Flip the cover.

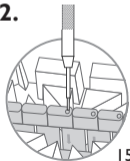
14

HOW TO RESIZE METAL BRACELET

On the inside of the bracelet, you will see some small arrows engraved on removeable links.

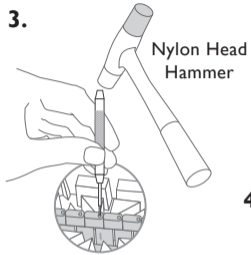


2.

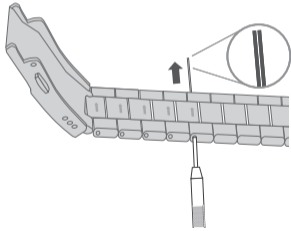


15

3.

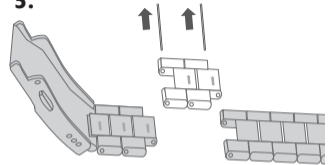


4.

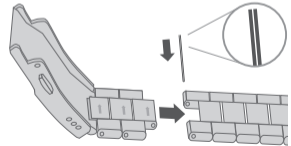


16

5.

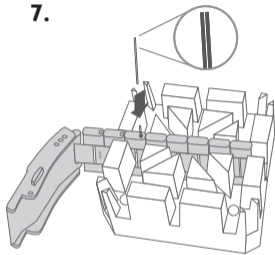


6.

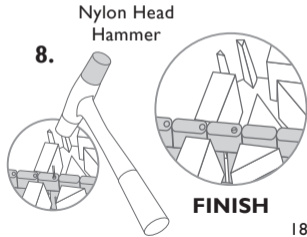


17

7.



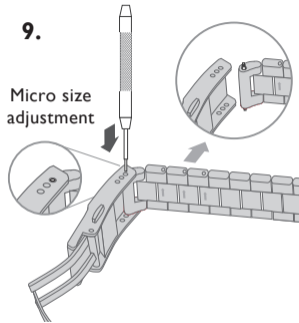
8.



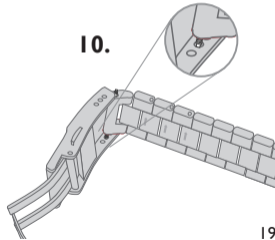
18

9.

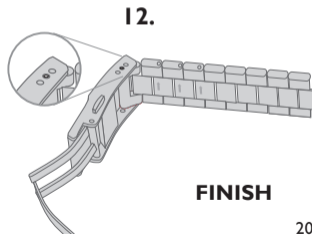
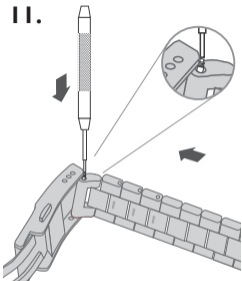
Micro size adjustment



10.



19



GENERAL CARE

Avoid leaving your watch in locations that are subject to large temperature fluctuations or humidity, direct sunlight or strong magnetic fields.

Always rinse your watch with lukewarm water if it has been exposed to seawater. Leather is a naturally porous material, therefore you should prevent the high-quality leather straps to come into contact with oily substances, solvents, detergents or cosmetics. In this way, you will be able to prevent discolouration or premature aging of the material.

To replace the strap, please contact an authorized dealer or authorized service centre.

The water resistance of the watch cannot be guaranteed indefinitely due to wear on the seals, climatic changes, shock or chemicals substances (body moisturisers, perfumes, etc.).

We therefore recommend that you regularly check the watch's water resistance and have an authorized service centre change the seals frequently.

We recommend that you have your watch inspected every 3-4 years by our authorized dealer / authorized service centre to perform routine maintenance of all mechanical parts.

For more details, visit our website: **www.ballast1903.com**

WATER RESISANT CHART

Please see chart for guideline for recommended water exposure.

WATER RESISTANCE CHART	30M/ 3ATM	50M/ 5ATM	100M/ 10ATM	150M/ 15ATM	200M/ 20ATM	300M/ 30ATM	500M/ 50ATM	1000M/ 100ATM
SPLASH/ SHOWERING	☑	☑	☑	☑	☑	☑	☑	☑
SWIMMING/ BATHING	☒	☑	☑	☑	☑	☑	☑	☑
SWIMMING/ SNORKELING/ WATER SPORTS	☒	☒	☑	☑	☑	☑	☑	☑
FREE DIVING	☒	☒	☒	☑	☑	☑	☑	☑
SCUBA DIVING	☒	☒	☒	☒	☒	☑	☑	☑
PROFESSIONAL DEEP SEA DIVING	☒	☒	☒	☒	☒	☒	☑	☑

www.ballast1903.com