



**PROTECTION
2014 — 2015**

EYE



HEAD/FACE



HEARING



CHAIN SAW



RESPIRATORY



Welcome to ELVEX®



ELVEX® has been providing quality safety equipment solutions to millions of workers for over thirty years. We are a leading designer and manufacturer with hundreds of distribution partners in the United States, and sales to 60 countries throughout the world.

Our mission is to offer our customers the finest quality safety products with the best service support available in the industry. We treat our customers as long term partners – and strive to deliver every order with extraordinary speed, quality, and accuracy. Most orders are shipped the same day they are received. A privately held company, ELVEX® is located in Bethel, Connecticut. We pride ourselves on providing reliable customer service with a personal touch. When you call ELVEX® you can be sure your call is answered by a knowledgeable and courteous safety professional.

With input from our valued customers, ELVEX® product development delivers a continuous flow of new and innovative problem-solving Personal Protective Equipment (PPE). We focus our solutions in safety eyewear, head, face, hearing and respiratory protection products, as well as a full line of chain saw protective clothing. A respected industry leader, ELVEX® serves a variety of industries including: mining, oil & gas, construction, power generation, forestry, chemical, pharmaceutical, aerospace, and manufacturing.

We hope this catalog will make your job easier in selecting the products best suited to your needs. Should you need any assistance, please contact our customer service team at 1.800.888.6582, by fax at 1.203.791.2278 or by email at sales@elvex.com. Our trained professionals will gladly assist you with your inquiry. We appreciate your business and look forward to serving you in the future!

100% Customer Satisfaction Guarantee

It's not right until the customer says it's right.

IND 2014-1

Table of Contents

Eye Protection

ELVEX® Lens Technology and Specifications	6-7
Problem-Solving Protective Eyewear	8
Extra-Protective Eyewear	9-10
New Eyewear for 2014	11, 14, 16
Bifocal Magnifying Protective Eyewear	10-13
Over-the-Glass Protective Eyewear.....	14
Premium Protective Eyewear	15-17
Core Protective Eyewear.....	17-20
Basic Protective Eyewear	20-21
Goggles and Accessories	22-23

Head/Face Protection

QuickSnap™ System Overview	26-27
ELVEX® Cap Mount Ear Muffs	28
QuickSnap™ Components	29
Face Shields	30-31
UltiMate™ Headgear and Mesh Screens.....	32
ARC Kits	33
Tetra™ Safety Caps	34
BrushGuard™ and CoolGuard™.....	35
Accessories	35

Hearing Protection

Performance Features and OSHA Requirements	38-39
Passive Ear Muffs.....	40-43
Guide™ Communication System	44-45
Electronic Ear Muffs.....	46-47
Reuseable Ear Plugs.....	48
Disposable Ear Plugs.....	48-49
Banded Hearing Protection.....	49

Chain Saw Protection

Performance and Productivity Features	52-53
Safety Training and Guide to Chain Saw Safety	54-55
Prolar™ Protective Pad Technology.....	55
ProGuard,™ ProChaps™.....	56-57
ArborChaps,™ ProVest™II, Pro-Gloves,™ Pro-Mitts™	58-59

Respiratory Protection

Air-Safe™ N95 Reusable & Disposable Respirators	60-61
---	-------

Index

.....	62-63
Why ELVEX®	64
Global Distribution	64

EYE

HEAD/FACE

HEARING

CHAIN SAW

RESPIRATORY





Go-Specs™

Eye Safety Never Looked or Performed Better

You'll look better too, because your workers will get the comfort, fit and performance they need to be safe and productive. And you'll benefit from our surprising value and personal service. Plus some pretty smart solutions — from the industry's widest line of bifocals to our collection of foam-lined Go-Specs.™ It's why people say, ELVEX® is preferred.



Denali™

Advanced Technology, Innovation

ELVEX® offers the most dynamic and user-focused line of Eye Protection for all your workers:



Bifocal Safety Glasses: ELVEX® was the first to introduce bifocal safety glasses to the market, and we offer a full line of stylish, form-fitting eye protection solutions that offer bifocal lenses in various diopter strengths for workers over 40 where close vision is important.

Foam Lined Go-Specs™ and Brow-Specs™ Safety Glasses: ELVEX® now has a deep line of industry leading models of EVA foam lined safety glasses that combines safety glass technology with “goggle-like” protection. The best combination of fit and protection you can get in a stylish lens!

Ballistic Rated Eye Protection: Our Ballistic V₀ rated safety glasses have been tested to the US Military standard MIL-PRF-31013 impact requirement of 640 feet per second — 7x the ANSI Z87+ energy standard, 4x Z87 Impact Velocity Standard!

Ultra Light Comfort: We know your workers have their glasses on for hours at a time. That’s why we offer Ultra Light eyewear for all-day comfort - lenses that weigh as little as 0.8 ounces!



Superior Lens Technology: Our polycarbonate lenses provide a number of features that are added during molding or in the coating process:

Superior Lens Technology Features:

- **Impact resistance:** All ELVEX® safety glasses meet the high velocity impact requirements of ANSI Z87.1-2010 (+). Where noted, some of our lenses exceed the ANSI standard by four times where you see the Ballistic V₀ icon.
- **ELVEX® SuperCoat™ Anti-Fog Protection:** SuperCoat™ anti-fog coating provides long lasting, washable, anti-fog, anti-scratch and anti-static protection.
- **A scratch resistant hard coating:** We add scratch resistant hard coating to all ELVEX® safety glasses (except model SG-10).
- **UV protection:** Our polycarbonate lenses provide UV protection (99.9%) between 180 and 380nm.
- **Indoor/Outdoor lens coating:** We’ve added additional UV absorbers and a light mirror coating to reduce glare and Visible Light Transmission, making our Indoor/Outdoor lenses ideal when moving from bright outdoor to indoor environments.
- **High UV and Blue Light:** We add these protective characteristics from special absorbers during the lens molding process to improve performance.
- **Weld Shades 1.4, 2, 3, & 5 lenses:** Our Weld Shade lenses have absorbers for the undesirable wavelengths and intensity of UV, Visible and IR light experienced when soldering, brazing, cutting or welding.

and Leadership in Eye Safety

Lens Performance and Tint Specifications

To better help you select the lens and tint that best fits your work conditions or application use, please see the chart below, which outlines the approximate performance characteristics of our numerous lens tint options, as well as application and performance benefits:

Lens Style	UV Light Protection 180-380nm	High UV Protection 380-400nm	Blue Light Protection 400-480nm	Blue Light Protection 400-700nm	Infra Red Protection 780-1100nm	Visible Light Transmission (VLT)	Application/Benefit
Amber	99.9%	99.9%	85%	74%	12%	86%	Blocks blue light for applications where increased visual contrast is needed. Inspection/Quality Control, haze and fog.
Blue Flash Mirror	99.9%	98%	84%	83%	42%	23%	Great general purpose sun lens that reduces sun glare and intense sunlight for outdoor applications.
Brown	99.9%	98%	90%	88%	57%	23%	Great general purpose sun lens with 'blue blocking' properties to reduce outdoor haze and increase contrast.
Clear	99.9%	89%	6%	4%	8%	90%	General purpose impact protection for indoor and outdoor use.
Cobalt Blue	99.9%	99.9%	97%	97%	60%	0.2%	For furnace, foundry and high heat applications where reduction of intense red and orange glow is desired to view heated materials.
Copper Blue Blocker	100%	100%	96%	96%	55%	16%	Excellent for intense outdoor sun glare reduction with 'blue blocking' properties to reduce outdoor haze and increase contrast.
Gold Mirror	99.9%	99%	91%	90%	61%	14%	Excellent for intense outdoor sun glare reduction with 'blue blocking' properties to reduce outdoor haze and increase contrast.
Grey	99.9%	98%	76%	74%	45%	23%	General purpose sun lens that reduces sun glare and intense sunlight for outdoor applications.
Grey Polarized	99.9%	99.9%	89%	88%	12%	11%	Excellent for intense outdoor sun glare reduction around highly reflective surfaces. Outdoor water & snow activities.
Ice Blue	99.9%	86%	15%	13%	10%	66%	Reduces eyestrain and fatigue from high levels of yellow and sodium vapor lighting inside many plants.
Indoor/Outdoor	100%	100%	62%	55%	28%	50%	Provides 50% glare reduction for workers moving between indoor/outdoor lighting conditions.
Light Brown	99.9%	97%	72%	69%	38%	48%	Modest sun glare reduction with some 'blue blocking' properties to reduce outdoor haze and increase contrast.
Photochromic (Light) (Dark)	99.99% 99.99%	91.70% 94.15%	22.67% 74.61%	18.90% 74.80%	8.25% -	83.70% 21.20%	Automatically adjusts lens tint for changing outdoor to indoor conditions.
Silver Mirror	99.9%	96%	77%	75%	43%	23%	Great general purpose sun lens that reduces sun glare and intense sunlight for outdoor applications.
Weld Shade 1.4	100%	98.7%	89.7%	81%	89%	65%	Excellent Welder's helper and torch soldering.
Weld Shade 2	100%	99.9%	98.7%	76%	93%	36%	Torch soldering and indirect exposure to light welding – welder's helper.
Weld Shade 3	100%	99.9%	99.6%	97.9%	94%	11%	Torch brazing and light gas cutting.
Weld Shade 5	100%	100%	99.9%	99.7%	98%	1.6%	Torch brazing and light gas welding and cutting.

Meets traffic signal color recognition requirements of ANSI Z80.3-1996

Key to Symbols

These icons will help you understand the performance characteristics of ELVEX® safety glasses throughout the catalog:

ANSI Z87.1-2010 (+) All ELVEX® safety glasses meet the ANSI Z87.1 standard.	Ballistic V₀ rated Safety glasses that have been tested to the US Military standard MIL-PRF-31013 requirement of 640 feet per second.	CE EN166 The CE Mark on a product or machine identifies it as complying with all the of safety requirements established by the European Union.	Bifocal Denotes lenses that offer bifocal vision in numerous diopter strengths.	Full Magnification 50 mm full magnifying lens in various diopter strengths	SuperCoat™ Protection Our unique SuperCoat™ protection provides industry-leading washable anti-fog, anti-scratch, anti-static and UV protection to safety lenses.	Anti Fog Coating Our standard level of anti-fog protection to ensure improved performance in all conditions.	UV Protection Where noted, our safety glasses meet or exceed UV Standard 801.

Problem-Solving Protective Eyewear

When competitor's eyewear can't deliver the safety, comfort and functionality you need, count on ELVEX. We can rapidly adapt or develop protective eyewear that solves your specific work site problems. And our hands-on approach means you'll get a timely response and customized solution. Here are some examples:

Get Goggle-like Protection in a Comfortable, Custom-fitting Spec

ELVEX has become a category leader in the development of closed cell foam protection for dusty, dirty and windy environments - where airborne particulates pose a real threat to workers eyes. Our growing line of Go-Specs™ and Brow-Specs™ safety glasses provide a dynamic range of comfortable, goggle-like protection in a safety glass.

Go-Specs™

Simply the best fitting, most comfortable foam-lined eyewear available anywhere

Soft, foam fills gap between face and lens
Keeps out wind, dust, sand or airborne debris

EVA closed-cell foam
Long lasting, resists body oil and sweat

Multiple ventilation ports allow air circulation
Superior anti-fog performance and wearer comfort

Pantoscopic lens angle adjustments
Allows a customized fit for greater comfort and protection

3 lightweight models: temples, elastic strap or RX
Provides customized all-day comfort



GG-40C-AF



GG-41G-AF

Pantoscopic adjustment



AVAILABLE LENS TINTS ● ● ● ●

Product. No.	Frame Color	Lens Tint	Lens Coating	Temple Style
GG-40A-AF	Black w/Orange Accent	Amber	SuperCoat™ AF	Straight w/Pantoscopic Angle Adj.
GG-40C-AF	Black w/Orange Accent	Clear	SuperCoat™ AF	Straight w/Pantoscopic Angle Adj.
GG-40G-AF	Black w/Orange Accent	Grey	SuperCoat™ AF	Straight w/Pantoscopic Angle Adj.
GG-40WS2-AF	Black w/Orange Accent	Welding Shade 2	SuperCoat™ AF	Straight w/Pantoscopic Angle Adj.
GG-41C-AF	Black w/Orange Accent	Clear	SuperCoat™ AF	Fabric Strap w/Pantoscopic Angle Adj.
GG-41G-AF	Black w/Orange Accent	Grey	SuperCoat™ AF	Fabric Strap w/Pantoscopic Angle Adj.

Go-Specs II™

Offers goggle "like" protection with excellent comfort, closer fit and a wide field of vision. Temples and FR elastic fabric strap included!

Keeps out wind, dust, sand or airborne debris
Soft, foam fills gap between face and lens

Pantoscopic lens angle adjustments
Allows customized fit, greater comfort and protection

Flame Retardant EVA Closed cell foam
Long lasting, resists body oil and sweat

Deep ventilation channels on top and bottom
Superior anti-fog performance and wearer comfort

Flame Retardant foam on frame and elastic strap
Improved wearer safety

Replaceable Lens Available-
Ballistic Rated lenses except for Weld Shade (meets ANSI)



GG-45C-AF



RL-45A-AF



AVAILABLE LENS TINTS ● ● ● ●

Product. No.	Frame Color	Lens Tint	Lens Coating	Temple Style
GG-45A-AF	Black w/Grey Accent	Amber	SuperCoat™ AF	Straight w/Black Rubber Tips & Black FR Fabric Strap
GG-45C-AF	Black w/Grey Accent	Clear	SuperCoat™ AF	Straight w/Black Rubber Tips & Black FR Fabric Strap
GG-45G-AF	Black w/Grey Accent	Grey	SuperCoat™ AF	Straight w/Black Rubber Tips & Black FR Fabric Strap
GG-45WS3-AF	Black w/Grey Accent	Welding Shade 3	SuperCoat™ AF	Straight w/Black Rubber Tips & Black FR Fabric Strap
GG-45WS5-AF	Black w/Grey Accent	Welding Shade 5	SuperCoat™ AF	Straight w/Black Rubber Tips & Black FR Fabric Strap
GG-45A-AF-DCAMO	Digital Desert CAMO	Amber	SuperCoat™ AF	Straight w/Black Rubber Tips & Black FR Fabric Strap
GG-45C-AF-DCAMO	Digital Desert CAMO	Clear	SuperCoat™ AF	Straight w/Black Rubber Tips & Black FR Fabric Strap
GG-45G-AF-DCAMO	Digital Desert CAMO	Grey	SuperCoat™ AF	Straight w/Black Rubber Tips & Black FR Fabric Strap
RL-45A-AF	Replacement Lens	Amber	SuperCoat™ AF	-
RL-45C-AF	Replacement Lens	Clear	SuperCoat™ AF	-
RL-45G-AF	Replacement Lens	Grey	SuperCoat™ AF	-
RL-45WS3-AF	Replacement Lens	Welding Shade 3	SuperCoat™ AF	-
RL-45WS5-AF	Replacement Lens	Welding Shade 5	SuperCoat™ AF	-

Extra-Protective Eyewear

When full side (or orbital) protection is required on the work site, ELVEX® offers a full range of safety glasses with an extra level of protection.

Go-Specs III™

Economy version of Go-Specs™

Soft, foam-lined frame

Better protection from flying particles

Ventilation Channels and Anti-fog coating

Improved anti-fog performance

Lightweight, wrap-around frame

Increased comfort and uninterrupted vision

EVA closed-cell foam

Long lasting, resists body oil and sweat



AVAILABLE LENS TINTS

Product. No.	Frame Color	Lens Tint	Lens Coating	Temple Style
GG-15C-AF	Clear	Clear	SuperCoat™ AF	Straight w/ Yellow Rubber Tips
GG-15G-AF	Grey	Grey	SuperCoat™ AF	Straight w/ Yellow Rubber Tips

BrowSpecs™

Protects workers eyes from falling debris and dripping sweat.

Soft foam brow guard fills gap between brow & lens

Protects eyes from above falling debris.

Flame Retardant EVA Closed cell foam

Long lasting, resists body oil and sweat.

Wide frame with wraparound flexible temples

Secure comfortable fit for even wide faces.

Soft rubber nose bridge with flexible "fingers"

Conforms to shape of nose for more comfort, minimizes slipping.

Wraparound lens

Extra wide unobstructed field of vision.

Wide frame with wraparound flexible temples

Secure comfortable fit for even wide faces.

RX lens insert (accessory)

For workers requiring vision correction



AVAILABLE LENS TINTS

Product. No.	Frame Color	Lens Tint	Lens Coating	Temple Style
SG-31A-AF	Black w/Orange Accent	Amber	SuperCoat™ AF	Straight Wrap
SG-31C-AF	Black w/Orange Accent	Clear	SuperCoat™ AF	Straight Wrap
SG-31CB-AF	Black w/Orange Accent	Cobalt	SuperCoat™ AF	Straight Wrap
SG-31G-AF	Black w/Orange Accent	Grey	SuperCoat™ AF	Straight Wrap
SG-31WS3-AF	Black w/Orange Accent	Welding Shade 3.0	SuperCoat™ AF	Straight Wrap
SG-31WS5-AF	Black w/Orange Accent	Welding Shade 5.0	SuperCoat™ AF	Straight Wrap
RX-31-Insert	Clear			

EYE

HEAD/FACE

HEARING

CHAIN SAW

RESPIRATORY

Extra-Protective Eyewear

NEW

Reflect-Specs™

Ideal for night construction, utility workers, mining or airport workers.

Utility Patented eyewear that integrates reflective temple panels

Adds another level of visibility and safety.

Economically priced

Added safety visibility that's affordable for all workers.

Super lightweight 0.9 oz./24 gm. with a 10 base wrapped polycarbonate lenses

Greater comfort, compliance with an uninterrupted field of view.

High visibility yellow rubber tipped temples

Improves visibility, reduces slipping, enhances comfort.

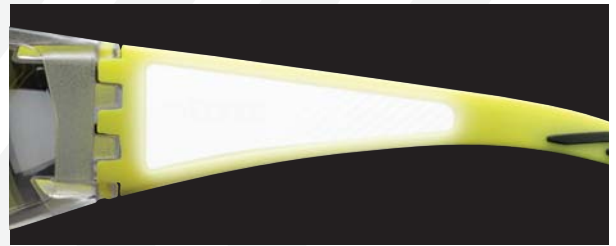
Universal nose bridge

Greater comfort and fit.



Why Reflect-Specs™?

Just like you see jogger's running shoes reflecting light at night, when retro-reflective panels are moving, they are more likely to be seen. Since workers are always moving their head during work activities, this motion greatly increases the 'flashing' of the retro-reflective panels on Reflect-Specs™ and increases visibility and safety of workers.



Product No.	Frame Color	Lens Tint	Lens Coating	Temple Style
SG-53A	Amber	Amber	Hard Coat	Straight Hi Viz Yellow Temples w/Silver Reflective Panel
SG-53C	Clear	Clear	Hard Coat	Straight Hi Viz Yellow Temples w/Silver Reflective Panel
SG-53C-AF	Clear	Clear	Anti-Fog/Anti-Scratch	Straight Hi Viz Yellow Temples w/Silver Reflective Panel
SG-53-I/O	Indoor/Outdoor	Indoor/Outdoor	Hard Coat	Straight Hi Viz Yellow Temples w/Silver Reflective Panel



AVAILABLE LENS TINTS



Bifocal Magnifying Protective Eyewear

ELVEX® recognized years ago that workers over age 40 often require additional help with close vision tasks while wearing safety glasses. That is why we were the first to develop bifocal safety glasses, and offer an expansive line for workers who need them or workers who perform delicate close-up tasks that require magnification.

Determine the reading power you need!

Determine smallest text that can be read with some difficulty from a distance of 14 inches from the bridge of your nose.	Power needed
If you have difficulty reading this line, you need....	3.0
If you have difficulty reading this line, you need....	2.5
If you have difficulty reading this line, you need....	2.0
If you have difficulty reading this line, you need....	1.5
If you have difficulty reading this line, you need....	1.0

Bifocal Magnifying Protective Eyewear

RX Go-Specs™

Our newest goggle-like safety glass innovation is now available in bifocals with three diopter strengths!

High Performance Impact Resistance

High velocity impact resistant molded lens with SuperCoat™ anti-fog coating

Superior All-Day Comfort

Soft and flexible EVA closed cell and angle adjustable temples make for great, comfortable fit

Soft, foam fills gap between face and lens

Keeps out wind, dust, sand or airborne debris

Pantoscopic lens angle adjustments

Allows a customized fit for greater comfort and protection



RX-GG-40C-AF

Pantoscopic adjustment



AVAILABLE LENS TINTS

Product. No.	Frame Color	Lens Tint	Lens Coating	Temple Style
RX-GG-40C-AF-1.5	Black w/Orange Accent	Clear	SuperCoat™ AF	Straight w/Pantoscopic Angle Adj.
RX-GG-40C-AF-2.0	Black w/Orange Accent	Clear	SuperCoat™ AF	Straight w/Pantoscopic Angle Adj.
RX-GG-40C-AF-2.5	Black w/Orange Accent	Clear	SuperCoat™ AF	Straight w/Pantoscopic Angle Adj.
RX-GG-40G-AF-1.5	Black w/Orange Accent	Grey	SuperCoat™ AF	Straight w/Pantoscopic Angle Adj.
RX-GG-40G-AF-2.0	Black w/Orange Accent	Grey	SuperCoat™ AF	Straight w/Pantoscopic Angle Adj.
RX-GG-40G-AF-2.5	Black w/Orange Accent	Grey	SuperCoat™ AF	Straight w/Pantoscopic Angle Adj.



NEW for 2014

RX-500™

Another 'FIRST' for Elvex®! Patent Pending Full Lens Ballistic Rated Magnifier in a wraparound Polycarbonate lens!

Over 50 mm diameter magnifying lens

Reduces eye strain and fatigue by not having magnification or trying to focus through inconveniently placed bifocals

Soft, flexible nose bridge and rubber temple tips

Minimizes slippage and provides all day comfort

Ballistic protection

Provides higher level of protection for the user



RX-500



AVAILABLE LENS TINTS

Product. No.	Frame Color	Lens Tint	Lens Coating	Temple Style
RX-500C-0.5	Black	Clear	Hard Coat	Straight w/Grey Temple Tips
RX-500C-0.75	Black	Clear	Hard Coat	Straight w/Grey Temple Tips
RX-500C-1.0	Black	Clear	Hard Coat	Straight w/Grey Temple Tips
RX-500C-1.5	Black	Clear	Hard Coat	Straight w/Grey Temple Tips
RX-500C-2.0	Black	Clear	Hard Coat	Straight w/Grey Temple Tips

EYE

HEAD/FACE

HEARING

CHAIN SAW

RESPIRATORY

Bifocal Magnifying Protective Eyewear

RX-400™

Our stylish economy bifocal glass in a lighter weight and 5 diopter strengths.

Great field of vision

Molded, one-piece unitary lens design

Superior wearability

Stylish lightweight frame with straight rubber tipped temples

Comfortable rubber nose bridge

Makes wearing the glasses a breeze for long periods



RX-400A



AVAILABLE LENS TINTS

Product. No.	Frame Color	Lens Tint	Lens Coating	Temple Style
RX-400-1.0	Clear	Clear	Hard Coat	Straight w/Burgundy Rubber Tips
RX-400-1.5	Clear	Clear	Hard Coat	Straight w/Burgundy Rubber Tips
RX-400-2.0	Clear	Clear	Hard Coat	Straight w/Burgundy Rubber Tips
RX-400-2.5	Clear	Clear	Hard Coat	Straight w/Burgundy Rubber Tips
RX-400-3.0	Clear	Clear	Hard Coat	Straight w/Burgundy Rubber Tips
RX-400A-1.0	Amber	Amber	Hard Coat	Straight w/Black Rubber Tips
RX-400A-1.5	Amber	Amber	Hard Coat	Straight w/Black Rubber Tips
RX-400A-2.0	Amber	Amber	Hard Coat	Straight w/Black Rubber Tips
RX-400A-2.5	Amber	Amber	Hard Coat	Straight w/Black Rubber Tips
RX-400A-3.0	Amber	Amber	Hard Coat	Straight w/Black Rubber Tips
RX-400G-1.0	Grey	Grey	Hard Coat	Straight w/Burgundy Rubber Tips
RX-400G-1.5	Grey	Grey	Hard Coat	Straight w/Burgundy Rubber Tips
RX-400G-2.0	Grey	Grey	Hard Coat	Straight w/Burgundy Rubber Tips
RX-400G-2.5	Grey	Grey	Hard Coat	Straight w/Burgundy Rubber Tips
RX-400G-3.0	Grey	Grey	Hard Coat	Straight w/Burgundy Rubber Tips

RX-350™

A New Level of style and protection with anti-fog coating on all models.

Great contemporary design

Stylish Golden Brown frames in our stylish Sonoma™ frame style

All Models with Anti-fog lenses

Easy to wear

Soft rubber nose bridge and temple tips make for great comfort

Available in non-bifocal option

Also available as a Plano safety glass (without bifocal) see product number SG-350



RX-350



AVAILABLE LENS TINTS

Product. No.	Frame Color	Lens Tint	Lens Coating	Temple Style
RX-350BR-1.0	Glossy Metallic Bronze	Brown	Anti-Fog/Anti-Scratch	Straight w/Soft Black Rubber Black Tips
RX-350BR-1.5	Glossy Metallic Bronze	Brown	Anti-Fog/Anti-Scratch	Straight w/Soft Black Rubber Black Tips
RX-350BR-2.0	Glossy Metallic Bronze	Brown	Anti-Fog/Anti-Scratch	Straight w/Soft Black Rubber Black Tips
RX-350BR-2.5	Glossy Metallic Bronze	Brown	Anti-Fog/Anti-Scratch	Straight w/Soft Black Rubber Black Tips
RX-350BR-3.0	Glossy Metallic Bronze	Brown	Anti-Fog/Anti-Scratch	Straight w/Soft Black Rubber Black Tips
RX-350C-1.0	Glossy Metallic Bronze	Clear	Anti-Fog/Anti-Scratch	Straight w/Soft Black Rubber Black Tips
RX-350C-1.5	Glossy Metallic Bronze	Clear	Anti-Fog/Anti-Scratch	Straight w/Soft Black Rubber Black Tips
RX-350C-2.0	Glossy Metallic Bronze	Clear	Anti-Fog/Anti-Scratch	Straight w/Soft Black Rubber Black Tips
RX-350C-2.5	Glossy Metallic Bronze	Clear	Anti-Fog/Anti-Scratch	Straight w/Soft Black Rubber Black Tips
RX-350C-3.0	Glossy Metallic Bronze	Clear	Anti-Fog/Anti-Scratch	Straight w/Soft Black Rubber Black Tips

RX-300™

Contemporary wrap-around design offers close fit and comfortable protection

Versatile design with contemporary style

Stylish, close-fitting, wrap-around design fits comfortably and performs even better.

All-day comfort Super-soft, flexible rubber nose pads and rubber temple inserts for comfort



RX-300



AVAILABLE LENS TINTS

Product No.	Frame Color	Lens Tint	Lens Coating	Temple Style
RX-300-1.0	Black	Clear	Hard Coat	Straight w/Soft Rubber Blue Inserts
RX-300-1.5	Black	Clear	Hard Coat	Straight w/Soft Rubber Blue Inserts
RX-300-2.0	Black	Clear	Hard Coat	Straight w/Soft Rubber Blue Inserts
RX-300-2.5	Black	Clear	Hard Coat	Straight w/Soft Rubber Blue Inserts
RX-300-3.0	Black	Clear	Hard Coat	Straight w/Soft Rubber Blue Inserts
RX-300G-1.0	Black	Grey	Hard Coat	Straight w/Soft Rubber Blue Inserts
RX-300G-1.5	Black	Grey	Hard Coat	Straight w/Soft Rubber Blue Inserts
RX-300G-2.0	Black	Grey	Hard Coat	Straight w/Soft Rubber Blue Inserts
RX-300G-2.5	Black	Grey	Hard Coat	Straight w/Soft Rubber Blue Inserts
RX-300G-3.0	Black	Grey	Hard Coat	Straight w/Soft Rubber Blue Inserts

RX-200™

Our #1-selling bifocal safety glass! Stylish, lightweight and comfortable wrap frame design.

Stylish contemporary design

Wrap design looks good and performs even better

Maximum comfort

Soft rubber nose bridge and temple tips make for all-day comfort

Now available in grey lens tint

Even more style options with superior performance



RX-200



AVAILABLE LENS TINTS

Product No.	Frame Color	Lens Tint	Lens Coating	Temple Style
RX-200-1.0	Translucent Grey	Clear	Hard Coat	Translucent Grey w/Black Rubber Tips
RX-200-1.5	Translucent Grey	Clear	Hard Coat	Translucent Grey w/Black Rubber Tips
RX-200-2.0	Translucent Grey	Clear	Hard Coat	Translucent Grey w/Black Rubber Tips
RX-200-2.5	Translucent Grey	Clear	Hard Coat	Translucent Grey w/Black Rubber Tips
RX-200-3.0	Translucent Grey	Clear	Hard Coat	Translucent Grey w/Black Rubber Tips
RX-200G-1.0	Translucent Grey	Grey	Hard Coat	Translucent Grey w/Black Rubber Tips
RX-200G-1.5	Translucent Grey	Grey	Hard Coat	Translucent Grey w/Black Rubber Tips
RX-200G-2.0	Translucent Grey	Grey	Hard Coat	Translucent Grey w/Black Rubber Tips
RX-200G-2.5	Translucent Grey	Grey	Hard Coat	Translucent Grey w/Black Rubber Tips
RX-200G-3.0	Translucent Grey	Grey	Hard Coat	Translucent Grey w/Black Rubber Tips

RX-100™

Feature-packed bifocal with a unitary lens, integrated side shields and adjustable temple lengths

Adjustable temples Adjustable for four different lengths for a secure fit, non-slip.

Pantoscopic lens tilt Perfect angle adjustment at the temple to fit more faces comfortably.

Unitary lens design

Provides wide, unobstructed field of vision.



RX-100



AVAILABLE LENS TINTS

Product No.	Frame Color	Lens Tint	Lens Coating	Temple Style
RX-100-1.0	Black	Clear	Hard Coat	Drop Temple w/Adj. Length and Pantoscopic Angle
RX-100-1.5	Black	Clear	Hard Coat	Drop Temple w/Adj. Length and Pantoscopic Angle
RX-100-2.0	Black	Clear	Hard Coat	Drop Temple w/Adj. Length and Pantoscopic Angle
RX-100-2.5	Black	Clear	Hard Coat	Drop Temple w/Adj. Length and Pantoscopic Angle
RX-100-3.0	Black	Clear	Hard Coat	Drop Temple w/Adj. Length and Pantoscopic Angle
RX-100G-1.0	Black	Grey	Hard Coat	Drop Temple w/Adj. Length and Pantoscopic Angle
RX-100G-1.5	Black	Grey	Hard Coat	Drop Temple w/Adj. Length and Pantoscopic Angle
RX-100G-2.0	Black	Grey	Hard Coat	Drop Temple w/Adj. Length and Pantoscopic Angle
RX-100G-2.5	Black	Grey	Hard Coat	Drop Temple w/Adj. Length and Pantoscopic Angle
RX-100G-3.0	Black	Grey	Hard Coat	Drop Temple w/Adj. Length and Pantoscopic Angle

Over-the-Glass Protective Eyewear

We recognize that many customers have a need for over-the-glass protective eyewear, either for their employees who wear prescription glasses every day or plant and/or workplace visitors who must be protected.

NEW for 2014

OVR-Spec™ III

Ultra-Lightweight and an Economical Solution for plant tours and worksite visitors

Only 1 ounce (32 grams), ultra-lightweight OVR/over specs.

Fits over most medium sized prescription eyewear (up to 144 mm). Economical glass that is ideal for use as visitor specs.

Adjustable length drop temples that “hook” behind the ears prevents slipping during work activity for better protection.

Frame design maintains a space between the prescription and safety lens, Expensive prescription lenses do not rub or scratch each other.



Product. No.	Frame Color	Lens Tint	Lens Coating	Temple Style
SG-57C	Clear	Clear	Hard Coat	Drop Temple w/Adjustable Length
SG-57G	Grey	Grey	Hard Coat	Drop Temple w/Adjustable Length

OVR-Spec™ II

Our most stylish eye safety alternative for everyday use

Great protection with extended top, bottom and side shields Ballistic rated safety glass with built-in side windows.

Sleeker design More contemporary styling, fits over most medium-sized prescription frames up to 5” (145mm) wide. Maintains a space between the RX and safety lens to avoid rubbing/scratching.

Superior comfort Self-adjusting nose bridge and rubber temple tips makes for great comfort.



Product. No.	Frame Color	Lens Tint	Lens Coating	Temple Style
SG-37A	Amber	Amber	Hard Coat	Straight w/Black Rubber Tips
SG-37C	Clear	Clear	Hard Coat	Straight w/Black Rubber Tips
SG-37G	Grey	Grey	Hard Coat	Straight w/Black Rubber Tips

OVR-Spec™ I

An oversize lens to fit over large frame prescription eyewear

Adjusts to fit most facial profiles Temple length and ratchet angle adjustments with top/bottom/side shields

Fits over very large prescription eyewear Accommodates widest range of visitors’ eyewear

Durable polycarbonate lens with ideal optics Scratch resistant hard coating with base 2.25 base curve



Product. No.	Frame Color	Lens Tint	Lens Coating	Temple Style
SG-27C	Clear	Clear	Hard Coat	Black Drop Temple w/Adj. Length and Pantoscopic Angle

Premium Protective Eyewear Dual Lens/Semi-Frame

NEW

Flex-Pro™ Series

Flex-Pro™ has it all! Aggressive style, lightweight comfort, Ballistic protection and **CoreFlex™** technology.

Introducing our new **CoreFlex™** Technology! Available in our standard Flex-Pro™ frame, Flex-Pro SlimFit™ & Flex-Pro™ Photochromic eyewear.

The Elvex® FlexPro™ Series is one of our most exciting safety eyewear product developments in some time. Our new CoreFlex™ Technology allows you to personally shape the temples to fit your head perfectly. That means less slippage, more comfort and greater protection!

Flex-Pro™ Photochromic is our most recent addition

Lens tint automatically adjusts to changing ultraviolet light when moving indoors or outdoors. Darkening/clearing in about 60 seconds.

Flex-Pro™ SlimFit (SF) is designed to fit slimmer facial profiles

Fits 10 mm thinner width and 6mm shorter in length.

Ballistic V rated for Greater Impact Protection

Tested to US Military Standard MIL-PRF-31013 Impact Test.

Long Lasting SuperCoat™ Anti-Fog

Washable coating on clear and grey lenses in the Flex-Pro™ Series. Provides anti-scratch and anti-static protection.

Form-Fitting Design

CoreFlex™, sleek and soft rubber thin temples allows for infinite personalized adjustments, optimal secure fit and non-slip performance.

All day comfort

Soft, cushioned saddle nose bridge and feather light frame enhances comfort- weighs only 0.98 ounces/24 grams.



Product. No.	Frame Color	Lens Tint	Lens Coating	Temple Style
SG-55A	Black	Amber	Hard Coat	CoreFlex™ Technology Black Rubber
SG-55C	Black	Clear	Hard Coat	CoreFlex™ Technology Black Rubber
SG-55C-AF	Black	Clear	SuperCoat™ AF	CoreFlex™ Technology Black Rubber
SG-55G	Black	Grey	Hard Coat	CoreFlex™ Technology Black Rubber
SG-55I/O	Black	Indoor/Outdoor	Hard Coat	CoreFlex™ Technology Black Rubber
SG-55M	Glossy Black	Silver Mirror	Hard Coat	CoreFlex™ Technology Black Rubber
SG-55P	Black	Photochromic	Hard Coat	CoreFlex™ Technology Black Rubber
SG-55C-SF	Black SF	Clear	Hard Coat	CoreFlex™ Technology Black Rubber
SG-55C-AF-SF	Black SF	Clear	SuperCoat™ AF	CoreFlex™ Technology Black Rubber
SG-55I/O-SF	Black SF	Indoor/Outdoor	Hard Coat	CoreFlex™ Technology Black Rubber
SG-55P-SF	Black SF	Photochromic	Hard Coat	CoreFlex™ Technology Black Rubber

EYE

HEAD/FACE

HEARING

CHAIN SAW

RESPIRATORY

Premium Protective Eyewear Unitary Lens/Semi-Frame

NEW for 2014

Denali™

Full Feature Protection Eyewear with Lifetime Frame Warranty! Easy Change Replacement Lenses... Replace the Lens twice and Save 47%!

Pantoscopic angle adjustment

Allows for a comfortable and customizable fit.

Top vented rubber brow guard for added impact protection

Allows air to vent and reduces fogging.

Adjustable 3-length drop temples with rubber overlay

For better fit and slip resistance during work activity and greater comfort.

Easy to wear soft rubber nose bridge with soft flex fingers

Adjusts to nasal profile for better fit and reduced slippage.

Replaceable Lenses Available in All Lens Tints

Saves Money!



SG-56BB



AVAILABLE LENS TINTS

Product. No.	Frame Color	Lens Tint	Lens Coating	Temple Style
SG-56A	Black	Amber	Hard Coat	Adj. Length and Pantoscopic Angle
SG-56BB	Black	Blue Blocker	Hard Coat	Adj. Length and Pantoscopic Angle
SG-56C	Black	Clear	Hard Coat	Adj. Length and Pantoscopic Angle
SG-56C-AF	Black	Clear	SuperCoat™ AF	Adj. Length and Pantoscopic Angle
SG-56I/O	Black	Indoor/Outdoor	Hard Coat	Adj. Length and Pantoscopic Angle
SG-56M	Black	Silver Mirror	Hard Coat	Adj. Length and Pantoscopic Angle
RL-56A	Replacement Lens	Amber	Hard Coat	-
RL-56BB	Replacement Lens	Blue Blocker	Hard Coat	-
RL-56C	Replacement Lens	Clear	Hard Coat	-
RL-56C-AF	Replacement Lens	Clear	SuperCoat™ AF	-
RL-56I/O	Replacement Lens	Indoor/Outdoor	Hard Coat	-
RL-56M	Replacement Lens	Silver Mirror	Hard Coat	-



RL-56A

Dual Lens/Semi-Frame

Sonoma™

Sophisticated sunglass styling and all day comfort places the Sonoma™ at the top of the line!

High-end sunglass styling

Glossy and metallic frames that workers will like to wear at work or at play.

All day comfort and secure fit

Soft, flexible nose pads and rubber temple tips fit like a dream.

Superior glare protection

Polarized polycarbonate lens available with classic glossy gunmetal-grey frame.

Also available in bifocal model

Ask for the RX-350™ for even better close working vision.



SG-350LB



AVAILABLE LENS TINTS

Product. No.	Frame Color	Lens Tint	Lens Coating	Temple Style
SG-350C	Glossy Metallic Bronze	Clear	Hard Coat	Straight w/Black Soft Rubber Tips
SG-350C-GREY	Glossy Gunmetal-Grey	Clear	Hard Coat	Straight w/Black Soft Rubber Tips
SG-350G	Glossy Gunmetal-Grey	Grey	Hard Coat	Straight w/Black Soft Rubber Tips
SG-350LB	Glossy Metallic Bronze	Light Brown	Hard Coat	Straight w/Black Soft Rubber Tips
SG-350M	Tortoise	Gold Mirror	Hard Coat	Straight w/Black Soft Rubber Tips
SG-350PL	Glossy Gunmetal-Grey	Grey Polarized	Hard Coat	Straight w/Black Soft Rubber Tips



SG-350G

Premium Protective Eyewear Dual Lens/Semi-Frame

XTS™

XTS™ combines a sleek and sporty sunglass look with superior protection and great fit!

Sporty impact protection

Wraparound dual lens styling with ballistic impact protection workers will want to wear.

Superior glare protection

Available in polarized polycarbonate lenses.

Available in striking colors

Black, red and sapphire blue high gloss frames.

Great comfort and fit

Soft, flexible rubber nose bridge for comfort and to prevent slippage.

Over molded temple tips

Provides flexibility and comfortable fit.



AVAILABLE LENS TINTS

Product. No.	Frame Color	Lens Tint	Lens Coating	Temple Style
SG-24C	Slate Grey	Clear	Hard Coat	Straight Back w/Soft Rubber Black Inserts
SG-24C-AF	Slate Grey	Clear	SuperCoat™ AF	Straight Back w/Soft Rubber Black Inserts
SG-24G	Slate Grey	Grey	Hard Coat	Straight Back w/Soft Rubber Black Inserts
SG-24G-AF	Glossy Sapphire	Grey	SuperCoat™ AF	Straight Back w/Soft Rubber Black Inserts
SG-24-I/O	Slate Grey	Indoor/Outdoor	Hard Coat	Straight Back w/Soft Rubber Black Inserts
SG-24M	Glossy Red Metallic	Silver Mirror	Hard Coat	Straight Back w/Soft Rubber Black Inserts
SG-24M-BLK	Glossy Black Frame	Silver Mirror	Hard Coat	Straight Back w/Soft Rubber Black Inserts
SG-24PL	Glossy Sapphire Frame	Grey Polarized	Hard Coat	Straight Back w/Soft Rubber Black Inserts

Core Protective Eyewear/Unitary lens

NEW

Avion™ & Avion SF™

Our “Flagship” unitary lens spectacle with premium comfort and performance

Protection with a view

Wraparound uni-lens design offers full panoramic view and superior ballistic protection.

Slimmer design available to fit and protect more facial profiles

Ideal for slender or narrower facial profiles, frame 10 mm slimmer than the standard Avion™.

Soft, flexible nose bridge

Minimizes slippage and provides all day comfort.

Superior Anti-Fog Protection

Supercoat™ anti-fog washable coating is available in clear and grey lenses, and provides anti-scratch/anti-static protection too!

Soft, rubber temple tips

Keeps eyewear comfortable and secure.



AVAILABLE LENS TINTS

Product. No.	Frame Color	Lens Tint	Lens Coating	Temple Style
SG-18A	Amber	Amber	Hard Coat	Straight w/Grey Soft Rubber Tips
SG-18C	Clear	Clear	Hard Coat	Straight w/Red Soft Rubber Tips
SG-18C-AF	Clear	Clear	SuperCoat™ AF	Straight w/Blue Soft Rubber Tips
SG-18C-BLK	Clear	Clear	Hard Coat	Straight w/Black Soft Rubber Tips
SG-18G	Grey	Grey	Hard Coat	Straight w/Red Soft Rubber Tips
SG-18G-AF-BLK	Grey	Grey	SuperCoat™ AF	Straight w/Black Soft Rubber Tips
SG-18-I/O	Indoor/Outdoor	Indoor/Outdoor	Hard Coat	Straight w/Red Soft Rubber Tips
SG-18C-Slim-BLK	Clear SF	Clear	Hard Coat	Straight w/Black Soft Rubber Tips
SG-18C-Slim-BLUE	Clear SF	Clear	Hard Coat	Straight w/Blue Soft Rubber Tips
SG-18C-Slim-PINK	Clear SF	Clear	Hard Coat	Straight w/Pink Soft Rubber Tips
SG-18C-AF-Slim-BLK	Clear SF	Clear	SuperCoat™ AF	Straight w/Black Soft Rubber Tips
SG-18G-AF-Slim-BLK	Grey SF	Grey	SuperCoat™ AF	Straight w/Black Soft Rubber Tips



SG-18C-Slim-PINK

EYE

HEAD/FACE

HEARING

CHAIN SAW

RESPIRATORY

Core Protective Eyewear/Unitary lens

Xenon™

Ultra lightweight makes these ultra popular worldwide

So lightweight workers forget they are wearing them
Weighs just .77 ounces (22 grams) for all day wear

Superior comfort
Soft rubber nose bridge and colorful rubber temple inserts make it easy to wear



SG-14-I/O



AVAILABLE LENS TINTS



Product. No.	Frame Color	Lens Tint	Lens Coating	Temple Style
SG-14A	Amber	Amber	Hard Coat	Black Straight w/Yellow Soft Rubber Inserts
SG-14B	Ice Blue	Ice Blue	Hard Coat	Black Straight w/Blue Soft Rubber Inserts
SG-14C	Clear	Clear	Hard Coat	Black Straight w/Red Soft Rubber Inserts
SG-14C-AF	Clear	Clear	Anti-Fog/Anti-Scratch	Black Straight w/Red Soft Rubber Inserts
SG-14G	Grey	Grey	Hard Coat	Black Straight w/Red Soft Rubber Inserts
SG-14G-AF	Grey	Grey	Anti-Fog/Anti-Scratch	Black Straight w/Red Soft Rubber Inserts
SG-14-I/O	Indoor/Outdoor	Indoor/Outdoor	Hard Coat	Black Straight w/Red Soft Rubber Inserts
SG-14M	Blue Mirror	Blue Mirror	Hard Coat	Black Straight w/Red Soft Rubber Inserts

Trix™

Fashionable frameless design with ballistic protection at an economical price.

Ballistic protection
Provides higher level of protection for the user

Stylish lightweight design
Unitary lens wraps around the head for great looks and weighs just 0.8 ounces (23 grams) for comfort

Rugged performance
Flexible nylon temple construction retains shape



SG-17G



AVAILABLE LENS TINTS



Product. No.	Frame Color	Lens Tint	Lens Coating	Temple Style
SG-17C	Clear	Clear	Hard Coat	Blue Semi-Drop
SG-17C-AF	Clear	Clear	SuperCoat™ AF	Blue Semi-Drop
SG-17G	Grey	Grey	Hard Coat	Blue Semi-Drop
SG-17I/O	Indoor/Outdoor	Indoor/Outdoor	Hard Coat	Blue Semi-Drop
SG-17M	Silver Mirror	Silver Mirror	Hard Coat	Blue Semi-Drop

Atom™

Sleek, comfortable and affordable

All-day comfort Soft rubber nose bridge and flexible temple tips

Very lightweight
Lightweight wrap style is easy to wear for long periods

Rugged, stylish-shaped lens
10 base curve lens is also scratch resistant



SG-400-I/O



AVAILABLE LENS TINTS



Product. No.	Frame Color	Lens Tint	Lens Coating	Temple Style
SG-400C	Clear	Clear	Hard Coat	Straight w/Burgundy Tips
SG-400C-AF	Clear	Clear	Anti-Fog/Anti-Scratch	Straight w/Blue Tips
SG-400G	Grey	Grey	Hard Coat	Straight w/Yellow Tips
SG-400-I/O	Indoor/Outdoor	Indoor/Outdoor	Hard Coat	Straight w/Burgundy Tips

Core Protective Eyewear Dual Lens/Semi-Frame

NEW

Sphere-X Ultimate™

Contemporary wraparound ballistic protection for harsh industrial environments

Unique frame with ventilation slots and SuperCoat™ lens
Allows air to vent, minimizes fogging

Adjustable 4-length drop temples gently “hook” behind the ears Reduces slipping during work activity; provides better protection, custom fit

Copper/blue blocker sun lens reduces glare and blue light Increases contrast and sharpens focus; easier for eye to focus in outdoor environments

Soft, self-fitting rubber nose bridge Conforms to wide range of bridge sizes to enhance comfort and secure fit

Temples adjust to 4 different lengths
Provides a custom fit.



SG-51A



AVAILABLE LENS TINTS

Product. No.	Frame Color	Lens Tint	Lens Coating	Temple Style
SG-51A	Black Vented	Amber	Hard Coat	Drop w/Adjustable Lengths
SG-51BB	Black Vented	Copper Blue Blocker	Hard Coat	Drop w/Adjustable Lengths
SG-51Blue	Black Vented	Blue	Hard Coat	Drop w/Adjustable Lengths
SG-51C	Black Vented	Clear	Hard Coat	Drop w/Adjustable Lengths
SG-51C-AF	Black Vented	Clear	SuperCoat™ AF	Drop w/Adjustable Lengths
SG-51G	Black Vented	Grey	Hard Coat	Drop w/Adjustable Lengths
SG-51G-AF	Black Vented	Grey	SuperCoat™ AF	Drop w/Adjustable Lengths
SG-51-I/O	Black Vented	Indoor/Outdoor	Hard Coat	Drop w/Adjustable Lengths
SG-51M	Black Vented	Silver Mirror	Hard Coat	Drop w/Adjustable Lengths
SG-51WS1.4	Black Vented	Welding Shade 1.4	Hard Coat	Drop w/Adjustable Lengths



SG-51BB

Unitary Lens/Semi-Frame

Acer™

Full coverage floating lens design; highly functional and sophisticated!

Floating lens design
Allows frame to flex outward to fit broader range of face sizes

Broad and soft rubber saddle nose piece
Greater comfort and impact protection, and reduces slipping

Fashionable straight back flexible temples
Provide a comfortable fit



SG-12-I/O-CAMO

Forest CAMO frame and temples appeal to the “Outdoorsman” in the workplace.



AVAILABLE LENS TINTS

Product. No.	Frame Color	Lens Tint	Lens Coating	Temple Style
SG-12A	Graphite	Amber	Hard Coat	Straight
SG-12C	Graphite	Clear	Hard Coat	Straight
SG-12C-AF	Graphite	Clear	SuperCoat™ AF	Straight
SG-12G	Graphite	Grey	Hard Coat	Straight
SG-12G-AF	Graphite	Grey	SuperCoat™ AF	Straight
SG-12-I/O	Graphite	Indoor/Outdoor	Hard Coat	Straight
SG-12M	Graphite	Silver Mirror	Hard Coat	Straight
SG-12A-CAMO	Green Forest CAMO	Amber	Hard Coat	Straight
SG-12C-CAMO	Green Forest CAMO	Clear	Hard Coat	Straight
SG-12G-CAMO	Green Forest CAMO	Grey	Hard Coat	Straight
SG-12-I/O-CAMO	Green Forest CAMO	Indoor/Outdoor	Hard Coat	Straight



SG-12G

EYE

HEAD/FACE

HEARING

CHAIN SAW

RESPIRATORY

Core Protective Eyewear Dual Lens/Semi-Frame

Elite™

High style design with wrap-around safety and incredible comfort

Proven user acceptance We took the same design of our popular bifocal safety glasses and applied it to a standard glass

Comfortable fit Soft, large padded rubber saddle nose bridge makes for an easy wear

Semi-frame design Fits a broader range of faces for greater comfort and safety

Comfortable rubber insert temples Reduces slipping



SG-200C



AVAILABLE LENS TINTS



Product. No.	Frame Color	Lens Tint	Lens Coating	Temple Style
SG-200C	Transparent Grey	Clear	Hard Coat	Straight w/Black Rubber Insert
SG-200G	Black/Yellow	Grey	Hard Coat	Straight w/Yellow Rubber Insert
SG-200-I/O	Transparent Grey	Indoor/Outdoor	Hard Coat	Straight w/Black Rubber Insert

Basic Protective Eyewear

TTS™

Our most economically priced, lightweight safety glass

Economically styled unitary lens
Perfect for day laborers, tour groups or students

Solid performing design with 10 base curve
Tight wrap around one-piece lens offers full eye protection

Ultra lightweight
Weighs just 0.80 ounce (23 grams) for all day comfort



SG-15C



AVAILABLE LENS TINTS



Product. No.	Frame Color	Lens Tint	Lens Coating	Temple Style
SG-15A	Black	Amber	Hard Coat	Semi-Drop
SG-15C	Black	Clear	Hard Coat	Semi-Drop
SG-15C-Bulk	Black	Clear	Hard Coat	Semi-Drop
SG-15G	Black	Grey	Hard Coat	Semi-Drop
SG-15G-Bulk	Black	Grey	Hard Coat	Semi-Drop
SG-15-I/O	Black	Indoor/Outdoor	Hard Coat	Semi-Drop
SG-15M	Black	Blue Mirror	Hard Coat	Semi-Drop

TNT™

A dynamite economical and popular safety glass!

Sleek contemporary design with 10 base curve
Tight wrap around one-piece lens offers full eye protection

Ultra-lightweight
Weighs just 1.0 ounces (28 grams) for all day comfort

Soft, rubber temple tips
Minimizes slippage



SG-13G



AVAILABLE LENS TINTS



Product. No.	Frame Color	Lens Tint	Lens Coating	Temple Style
SG-13C	Black	Clear	Hard Coat	Straight w/Soft Grey Rubber Tips
SG-13C-AF	Black	Clear	Anti-Fog/Anti-Scratch	Straight w/Soft Grey Rubber Tips
SG-13G	Black	Grey	Hard Coat	Straight w/Soft Grey Rubber Tips
SG-13-I/O	Black	Indoor/Outdoor	Hard Coat	Straight w/Soft Grey Rubber Tips

Basic Protective Eyewear

Ranger™

Basic uncoated eye protection

Great visitor solution

Economical glass can fit over some prescription eyewear

Solid protection and ventilation

Design incorporates brow protection and both side shields and vents



SG-10C



AVAILABLE LENS TINTS ○

Product. No.	Frame Color	Lens Tint	Lens Coating	Temple Style
SG-10C	Clear	Clear	Uncoated	Semi-Drop

Unitary Lens/Semi-Frame

Challenger™

Classic safety protection and low cost make a great safety glass — and welders' first choice

Workhorse welding glass

Challenger is an economical option for welding projects

Adjustable drop temples

Fit behind ears and allow length adjustment to reduce slippage while working

Universal nose bridge

Provides comfort and unobstructed vision



SG-25WS3



AVAILABLE LENS TINTS ●●

Product. No.	Frame Color	Lens Tint	Lens Coating	Temple Style
SG-25WS3	Black	Welding Shade 3.0	Hard Coat	Drop w/Adjustable Length
SG-25WS5	Black	Welding Shade 5.0	Hard Coat	Drop w/Adjustable Length



SG-25WS5

EYE

HEAD/FACE

HEARING

CHAIN SAW

RESPIRATORY

Goggles

Visionaire™

Premium quality, high performance safety goggles for splash, dust and mist.

Dual lens option (GG-35-AF)

Hard coated PC lens on the outside and acetate lens with permanent anti-fog coating on the inside. Insulates like a "thermopane" window for less condensation on the inside of the goggle.

Improved Long Lasting SuperCoat™ Anti-Fog

Frame has four large indirect ventilation slots, as well as improved SuperCoat™ washable anti-fog coating, anti-scratch and anti-static protection.

Extreme comfort and broad field of vision

Extra wide face flange for comfort. Fits over most prescription eyewear.

Applications Dual lens is great for cold weather applications. Chemical splash, mist protection. ANSI D3, D4

Comfortable fit Extra wide and comfortable elastic fabric strap for all day wear



GG-30G-AF



GG-35-AF



AVAILABLE LENS TINTS

Product. No.	Frame Color	Lens Tint	Lens Coating	Temple Style
GG-30-AF	Smoke	Clear	SuperCoat™ AF	Extra Wide Adjustable Fabric Strap
GG-30G-AF	Smoke	Grey	SuperCoat™ AF	Extra Wide Adjustable Fabric Strap
GG-35-AF	Smoke	Clear	Hard Coat Outside/AF Inside	Extra Wide Adjustable Fabric Strap
RL-30-AF		Clear	SuperCoat™ AF	
RL-35-AF		Clear	Hard Coat Outside/AF Inside	



GG-30-AF

Legionnaire™

Impact, splash, dust and mist resistant goggle

High value goggle

Great performance and value for the price

Superior performance

Impact and splash resistant molded lens. ANSI D3, D4

Now with Improved Supercoat™ Anti-Fog Protection

Long lasting anti-fog washable coating, provides anti-scratch and anti-static protection too!

Comfortable wear

Eighteen indirect ventilation slots, top and bottom, and fits over prescription eyewear with ease



GG-25C-AF-SMOKE



AVAILABLE LENS TINTS

Product. No.	Frame Color	Lens Tint	Lens Coating	Temple Style
GG-25C-AF-AS	Smoke	Clear	SuperCoat™ AF	Wider Adjustable Fabric Strap w/"D" Slides
GG-25C-AF-SMOKE	Smoke	Clear	SuperCoat™ AF	Narrow Adjustable Fabric Strap w/o "D" Slides

○ Eyewear Accessories

Purchase these items that will increase the longevity and help protect your safety eyewear.

Safety Glass Cords

Safety glass cords help keep your glasses securely at hand while working



Product No.	Description
SGC-10-HIVIZ	Safety Eyewear Cord w/Eyelet Attachment, HiViz Yellow
SGC-20-BLUE	Safety Eyewear Cord, Wider Width , Adjustable Length, Blue
SGC-30-BLACK	Safety Eyewear Cord, Elastic Slip-On Construction, Adjustable Length, Black

○ Storage Cases & Bags

Storage bags help you protect your safety products and keep them at hand when they are needed



Product No.	Description
SGB-5	Economy Microfiber Drawstring Eyewear Bag, Black
SGB-10	Foam Padded Nylon Eyewear Case, Zipper Closure, Belt Clip, Black
SGB-20	Oversized Nylon Eyewear Case, Zipper closure, Belt Clip, Black
SGB-30	Oversized Microfiber Eyewear Bag with Drawstring. Suitable for Goggles or Earmuffs, Black

EYE

HEAD/FACE

HEARING

CHAIN SAW

RESPIRATORY





Virtually every face shield, for every job, for every brand hard hat.

Only ELVEX® can offer you so many choices for safe, cost-effective head and face protection. And using our **QuickSnap™** system you can place nearly 30 face shields and visors on any major brand of safety cap, then add one of our 16 cap-mounted ear muffs and COM systems alone or in combination with our shields. It's a versatile, all-in-one face/head/hearing protection system. Just one reason why people say, "I prefer ELVEX®".



QuickSnap™ Safety Cap System

Add face and hearing protection with ELVEX QuickSnap™ System in

Only ELVEX® allows you to add face and hearing protection to virtually every worker's hard hat, whatever their preferred brand of safety cap. Using **QuickSnap™** Slot Adaptors, Bracket Arms and Visor Brackets you can add complete above-the-shoulder protection without investing in new hard hats. *There are just 4 easy steps...*

1. Hard Hat

Select your current hard hat from adjacent chart (or choose our award-winning **Tectra™**)



2a. QuickSnap™ Slot Adaptors

Allows you to combine head with face protection



3. Visor Bracket

ELVEX® visor brackets accommodate most brim styles



4. Face Shield

Choose from almost 30 face shields/visors/screens — at 0.078"



2b. QuickSnap™ Cap Mount Ear Muffs/Slot Adaptor

Choose from 6 passive cap-mounted ear muffs or 10 electronic communication ear muffs alone or with face protection



○ to any hard hat just four easy steps!

Ordering is a snap:

- Step 1.** Locate your hard hat brand in the Product Selection Chart below, or choose the award-winning ELVEX® Tectra™.
- Step 2.** Decide if you would like to add
 (a) face shield protection only
 (b) hearing protection only or both face and hearing protection
- 2a.** For Face protection only — select slot adaptor blade based on hard hat choice from the chart below. Continue to Step 3 and 4.
- 2b.** For Hearing protection- choose an ELVEX® Cap Mount Ear Muffs style on page 28 — with 25, 27 or 28 NRR. Muffs attach to safety cap choice using Bracket Arms with **QuickSnap™** Slot Adaptor Blades from the chart on page 28. To add a face shield continue to Steps 3 and 4.
- Step 3.** In the Visor Bracket column, select the correct ELVEX® Visor Bracket for your hard hat.
- Step 4.** Choose an ELVEX® Face Shield or Visor from pages 30, 31-34. Options include clear, clear anti-fog, tinted, hi-temp, gold-coated, electric ARC, molded Lexan®, weld shade, or die-cut polycarbonate, aspherical molded polycarbonate, or heavy-duty steel mesh. All face shields attach to ELVEX® Visor Brackets with Slot Adaptors and allows them to flip up and stay up until needed.



ELVEX® Tectra™ Safety Cap with SA/29, VB-30, FS-18L



ELVEX® Tectra™ Safety Cap w/HM-2029



ELVEX® Tectra™ Safety Cap with HM-2029, VB-30, FS-16

Product Selection Chart for Step 2a and 3 - Face Protection only

1. HARD HAT BRAND	2a. SLOT ADAPTOR BLADES		3. VISOR BRACKETS	
	SA-29	SA-93	VB-10	VB-30
ELVEX® Tectra™ SC50	X	X		X
Bullard	X	X	X	
ERB		X	X	
Fibre Metal requires QS-29*	X	X	X	X
Jackson	X	X	X	
MSA V-Guard HDPE	X	X	X	
MSA V-Guard Advance	X	X		X
North A29	X	X		X
North A59/A69/A79	X	X	X	
Willson Alpha/Beta		X	X	
3M	X	X	X	

* QS-29 Quick Slot creates a slot on slotless caps
 NOTE: Shaded X selections are the best fit. Others will also fit.

EYE

HEAD/FACE

HEARING

CHAIN SAW

RESPIRATORY

ELVEX® Cap Mount Ear Muffs

Add to most any brand safety cap for the ultimate in hearing protection, user-flexibility and comfort.

Add ELVEX® ear muffs to most any brand safety cap

ELVEX® QuickSnap™ system of Cap Muffs with bracket arms adapts every worker's hard hat to fit ELVEX® ear muffs

Unique "Fit Under" cap design

Allows ELVEX® HM-20, HM-60, HM-80 muffs to fit under safety caps

Accommodate full range of work environments

Muffs available with 25, 27 and 28 dB NRR (Noise Reduction Ratings)

Two integrated rest positions

Flip them out for a short break, or flip them up when the job is done

Lightweight dielectric construction, non-conductive

Comfortable for all-day wear; lighter than most other muffs

Un-slotted caps and bump caps accommodated

Muffs fit perfectly using ELVEX® QuickSlot™ adaptor (QS-29)

Face shields and visors can be easily added without tools

All ELVEX® cap mount muffs accept ELVEX® Visor Brackets and shields



"Fit Under" Design Muff

Product No.	NRR	Description
HM-20**	25	Cap-Mounted Low Profile Ear Muff, 8.1 oz./230g.
HM-60**	27	Cap-Mounted Large Volume Ear Muff, 8.5 oz./242g.
HM-80**	28	Cap-Mounted SuperSonic Ear Muff, 9.4 oz./268g.

** See chart below to select cap muff slot adaptor

*Notes:

ELVEX® cap muff bracket arms have blades in 3 sizes to fit major brands of hard hats. The last 2 digits of the model#, i.e. HM-20** describes the blade size. See chart below.

Cap mounted muff systems accepts VB-10/30 visor brackets for mounting ELVEX® face shields.

Competitor Safety Cap



HM-2029



HM-6093



HM-8093

Product Selection Chart for Step 2b and 3 Hearing Protection and Visor Bracket

HARD HAT BRAND	MUFF SLOT ADAPTOR BLADE		VISOR BRACKETS	
	HM-29	HM-93	VB-10	VB-30
ELVEX® Tectra™ SC50	X	X		X
Bullard	X	X	X	
ERB		X	X	
Fibre Metal requires QS-29*	X	X	X	X
Jackson	X	X	X	
MSA V-Guard HDPE	X	X	X	
MSA V-Guard Advance	X	X		X
North A29	X	X		X
North A59/A69/A79	X	X	X	
Willson Alpha/Beta		X	X	
3M	X	X	X	

* QS-29 Quick Slot creates a slot on slotless caps.

NOTE: Shaded X selections are the best fit. Others will also fit.



Flip muffs & visor up when not in use

QuickSnap™ System Components

The ELVEX® **QuickSnap™** System includes slot adaptor blades, bracket arms and visor brackets that allow major hard hat brands to accept ELVEX® cap mount ear muffs, face shields and visors. The slot adaptor blades are an integrated part of the muff arm assembly and there are no separate parts to purchase.

Slot Adaptor Blades

Product No.	Description
SA-29	Slot Adaptor for Slotted Safety Caps*. For use with VB-10/30 Visor Bracket
SA-93	Universal Slot Adaptor Fits 29mm and most 33mm Wide Slotted Safety Caps*. Remove slot filler for use with narrower slots. Use with VB-10/30 Visor Bracket.
QS-29	Quick-Slot for Mounting face shields and Muffs to Unslotted Safety Caps

Slot Adaptor Blades



SA-29

SA-93

QS-29

Visor Brackets

ELVEX® Visor Brackets (VB-10 and VB-30) are designed to permit mounting of our full face shield line to most major brands of safety caps and allows simultaneous use of cap mount ear muffs for hearing protection. Each model is designed to accommodate safety helmets with different beak lengths and angles. Our new VB-60 Visor Bracket is designed for non-conductive applications and has an overhead center position feature that balances and distributes the weight of the shield evenly. Attaches to most safety caps and slot-less safety caps.

Product No.	Description
VB-10	Visor Bracket Mounts on Safety Caps, use with ELVEX® Slot Adaptors or ELVEX® Cap Mount Ear Muffs. Accepts Face shield or Visors. Now with wide brim.
VB-30	Visor Bracket for Safety Caps with Sloping Brim, use either an ELVEX® slot adaptor or ELVEX® Cap Mount Ear Muffs. Accepts Face Shields or Visors. (not shown)
VB-50	Aluminum Visor Bracket that directly attaches to most Safety Caps for High Temperature Applications. (Not for use with cap muffs)
VB-60	Dielectric Visor Bracket that directly attaches to most Safety Caps for Non-Conductive Applications (Not for use with cap muffs) Ideal for slot-less safety caps.



VB-10

VB-30

VB-60

VB-50

See Selection Chart on pages 27 and 28 to match visor bracket with safety cap brand.

Replacement Bracket Arms

Product No.	Description
BR-29	Replacement Arm Bracket for Cap Mount Muffs, HM-20/60/80
BR-93	Replacement Arm Bracket for Cap Mount Muffs, HM-20//60/80
QS-29	Quick-Slot for Mounting Muffs to Unslotted Safety Caps



BR-29

BR-93

QS-29

Replacement Bracket Arms with Slot Adaptors

EYE

HEAD/FACE

HEARING

CHAIN SAW

RESPIRATORY

ELVEX® Face Shields: World Class Quality and Durability

Elvex® offers a variety of face shield shapes and sizes, specialty coatings and absorbers to suit your specific work environment. Featuring a universal hole pattern, shields are designed to fit all ELVEX® headgear and visor brackets as well as most competitive headgear.

All face shields are ANSI Z87.1 Compliant

Lexan® (trademark of SABIC IP), is a superior quality, optical grade, highly impact resistant and heat tolerant material (up to 265°F), with limited scratch resistance. Lexan® offers UV absorption characteristics 99% between 180-380 nm.

Polycarbonate (PC) is a non-proprietary high quality material with similar performance characteristics to Lexan®.

Hard Coatings (HC) are used to provide improved chemical and abrasive resistance. Hard coatings increase the useful work life of a face shield in some environments.

Anti-fog Coating is available on select face shields, and may be required for some environments.

Universal Hole Pattern molded, die-cut universal hole pattern fits most competitors headgear options.



FS-15LG/HG-25

Economy Face Shield

Our most economical flat option with a 0.04" thick shield is perfect for use with a broad spectrum of industry headgear. Acetate face shields are the best choice for chemical splash applications.

Product No.	Description
FS-15ACE	Clear Shield, 8" x 15.5" x .04", Flat Acetate
FS-15P	Clear Shield, 8" x 15.5" x .04", Flat PC

Headgear sold separately pg. 32



FS-15P/HG-25



FS-15ACE (flat)

Molded Polycarbonate Face Shields

High Performance polycarbonate face shields in a variety of sizes and application types.

Product No.	Description
FS-12PC	Clear Shield, 8" x 12" x .078", Molded Aspherical PC
FS-15PC	Clear Shield, 8" x 15.5" x .078", Molded Cylinder PC
FS-16PC	Clear Shield, 8" x 16" x .078", Molded Aspherical PC
FS-16PC-AF	Clear Shield, 8" x 16" x .078", Molded Aspherical Anti-Fog/PC

Headgear sold separately pg. 32



FS-16PC/HG-25



FS-12PC



FS-15PC



FS-16PC-AF w/SuperCoat™



Aspherical design allows optimal freedom of movement in all directions.
FS-16PC with headgear shown.

Premium Molded Lexan® Face Shields

Our premium Lexan® face shields offer optimal performance in a variety of sizes and application types.

Product No.	Description
FS-12L	Clear Shield, 8" x 12" x .078", Molded Aspherical Lexan® PC
FS-12LG	Green Shield, 8" x 12", x .078", Molded Aspherical Lexan® PC
FS-15CL	Clear Shield, 8" x 15.5" x .078", Molded Cylinder Lexan® PC, Super HC
FS-15L	Clear Shield, 8" x 15.5" x .078", Molded Cylinder Lexan® PC
FS-15LG	Green Shield, 8" x 15.5" x .078", Molded Cylinder Lexan® PC
FS-18CL	Clear Shield, 10" x 18.5" x .078", Molded Cylinder Lexan® PC, Super HC
FS-18L	Clear Shield, 10" x 18.5" x .078", Molded Cylinder Lexan® PC
FS-18L-CP	Clear Shield w/Chin Protector, 10" x 18.5" x .078", Molded Cylinder Lexan® PC
FS-18LG	Green Shield, 10" x 18.5" x .078", Molded Cylinder Lexan® PC

Headgear/visor bracket sold separately pg. 32



FS-18L/HG-35



FS-12LG/HG-25

Lexan® is a Trademark of SABIC Innovative Plastics IP BV



FS-15L



FS-15-CL



FS-18-CL



FS-18-LG



FS-12L/VB-10



FS-18L-CP

Molded Specialty Face Shields

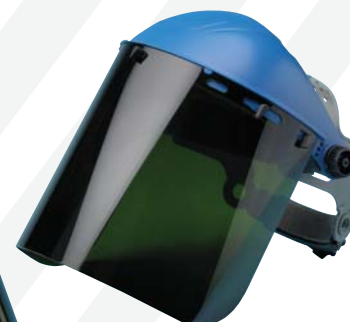
For welding/electric arc and high temperature applications

Product No.	Description
FS-15WS5	Green Welding Shade 5, 8" x 15.5" x .078", Molded Cylinder HC/PC
FS-18ARC10	ARC-Shield, 10" x 18.5" x .078", Molded Cylinder Lexan® AF/PC NFPA 70E Risk Category 1 (12 cal/cm2)
FS-18GL	Gold Coated Shield, 10" x 18.5" x .078", Molded Cylinder Lexan® HC/PC, (Heat resistance approx. 1800°F)
FS-20ARC10	ARC-Shield w/Chin Protector, 10" x 18.5" x .078", Molded Cylinder Lexan® AF/PC, NFPA 70E Risk Category 2 (12 cal/cm2)
FS-ARC40-18-V	ARC Shield, Single Layer AF/PC, w/Sewn on Hook Velcro, 56 cal/cm2 (Use w/ARC Rated Hoods)
FS-ARC40-V	Dual Layer AF/PC ARC Shield w/Sewn on Hook Velcro, 80 cal/cm2 (Use w/ARC Rated Hoods)

Headgear sold separately pg. 32



FS-18GL/HG-35



FS-15WS5/HG-25



FS-18ARC-10



FS-20ARC10



FS-ARC40-18-V



FS-ARC40-V

EYE

HEAD/FACE

HEARING

CHAIN SAW

RESPIRATORY

UltiMate™ Headgear System

When you need quality head gear to hold face shields, visors and mesh screens, ELVEX® has the solution. **UltiMate™** HG-25 and HG-35 are the perfect platform for metal and process industries, power generation, manufacturing, forestry and other industrial uses.

Tight, hugging suspension

Fits comfortably for all-day wear with two swivel points on rear neck band to provide a secure, hugging fit

Fully compatible design fits most face shields

Universal pattern swivel locks accommodate hole patterns on most brands of face shields

Comfortable wear all day

Soft fabric brow and neck pad

Fits more heads

Ratchet adjusts for head circumference and suspension has pin-lock adjustment for head height

ANSI Z87.1 Compliant

Headgear

Product No.

HG-25 UltiMate™

HG-35 UltiMate™

Description

Ratchet Headgear w/Fabric Sweatband, 5 Swivel Locks, Blue

Ratchet Headgear w/Oversized Heat Tolerant Brow Guard, Fabric Sweatband, 5 Swivel Locks, Black

Headgear/Face Shield Systems

HG-70

Headgear w/Steel Mesh Screen

HG-80

Headgear w/PC Shield



HG-25



HG-35

Oversized Heat Tolerant Browguard



HG-80



HG-70

Mesh Screens

Elvex® mesh screens provide great protection from flying particles and debris with maximum ventilation.

The Nylon mesh screen is great for outdoor applications

For hot, humid environments where ventilation is a requirement. Lightweight and durable. This convenience shield does not meet ANSI requirements.

Steel mesh screens

Offers impact resistance and is intended to deflect flying objects. Meets ANSI Z87.1 standard.

High Temperature Steel mesh screen

Ideal for use in elevated temperatures. Meets ANSI Z87.1 standard.

Note: ANSI Z87.1 standard requires separate eye protection, suitable for the situation and application.



SV-70



SV-15H



NV-70



SV-75

Mesh Screens

Product No.

NV-70

Description

Nylon Mesh Forestry Screen For VB-10/30, 7.25" x 13", EN1731

SV-15H

Heat Reflecting Mesh Steel Screen For VB-10/30/50 & HG-25/35, 8" x 15.5", ANSI Z87.1

SV-70

Steel Mesh Forestry Screen For VB-10/30, 7.25" x 13", ANSI Z87.1, EN1731

SV-75

Steel Mesh Forestry Screen For HG-25/35, VB-50, 7.25" x 13", ANSI Z87.1, EN1731

Face Shields for ARC FLASH Application

ELVEX® offers a range of specialty face shields for Arc Flash Hazards in extreme thermal energy conditions. Key benefits of ELVEX® ARC Shields and ARC Shield Kits:

- **Proprietary molded polycarbonate design with special spectral absorbers**
- **Industry-leading 0.078" thickness for optimal thermal and impact protection**
- **Arc shields are ANSI Z87.1 Compliant**
- **Anti-Fog coating for long term anti-fog performance**
- **Light green shield tint provides excellent visible light transmission (VLT)**
- **All components tested and certified at Kinectrics High Current Laboratory**

ELVEX® ARC Shield kits include hard hats, visor brackets and Balaclavas suitable for Hazard/Risk Categories (HRC) 1 and 2. The minimum Arc Rating, or ATPV (Arc Thermal Performance Value) is shown in the table below.

NFPA 70E-2012 Hazard/Risk Categories with Head and Face Protection for category 1 and 2

Hazard/Risk Category	Arc Rated Head & Face Protection Required	Minimum ATPV in cal/cm2	ELVEX® Kit Item No.
1	ARC Shield, hard hat, balaclava, safety glasses, hearing protection	4	CU-ARC-1 or 2
2	ARC Shield with Chin Protection, hard hat, balaclava, safety glasses, hearing protection	8	CU-ARC-3, 4 or 5



Included in all CU-ARC Kits



HD-ARC-FR3

SG-14C

Complete ARC Kits Available

Kit No. (Cal Rating)	Safety Helmet	Arc Shield	Balaclava	Visor Bracket/Slot Adaptor	Eye Protection	Hearing Protection
CU-ARC-1 (12 cal)	Tectra cap, SC-50-6R	FS-18ARC10	HD-ARC-FR3	VB-30/SA-29	SG-14C	Quattro Ear Plugs*
CU-ARC-2 (12 cal)	Tectra cap, SC-50-6R	FS-18ARC10	HD-ARC-FR3	VB-30/SA-29	SG-14C	Cap Mount Muffs HM-20
CU-ARC-3 (12 cal)	Tectra cap, SC-50-6R	FS-20ARC10 w/chin protector	HD-ARC-FR3	VB-30/SA-29	SG-14C	Quattro Ear Plugs*
CU-ARC-4 (12 cal)	Tectra cap, SC-50-6R	FS-20ARC10 w/chin protector	HD-ARC-FR3	VB-30/SA-29	SG-14C	Cap Mount Muffs HM-20
CU-ARC-5 (12 cal)	Tectra cap, SC-50-6R	FS-20ARC10 w/chin protector	HD-ARC-FR3	VB-60	SG-14C	Quattro Ear Plugs*

*To be worn under balaclava

Product No.

Description

CU-ARC-1	12 CAL FS-18ARC10, Helmet, Balaclava, Clear Safety Glass, Accessories, Quattro Ear Plugs, NRR 25
CU-ARC-2	12 CAL FS-18ARC10, Helmet, Balaclava, Clear Safety Glass, Accessories, HM-20 Cap Muffs, NRR 25
CU-ARC-3	12 CAL FS-20ARC10 w/Chin Protector, Helmet, Balaclava, Clear Safety Glass, Accessories, Quattro Ear Plugs, NRR 25
CU-ARC-4	12 CAL FS-20ARC10 w/Chin Protector, Helmet, Balaclava, Clear Safety Glass, Accessories, HM-20 Cap Muffs, NRR 25
CU-ARC-5	12 CAL FS-20ARC10 w/Chin Protector, Helmet, Balaclava, Center Position/Weight Balancing Visor Bracket, Clear Safety Glass, Quattro Ear Plugs, NRR 25
HD-ARC-FR3	34 CAL rated Arc Rated, Double Ply Balaclava



CU-ARC-3 includes Quattro™ Ear Plugs

CU-ARC-5 includes Quattro™ Ear Plugs



CU-ARC-4 includes HM-20 muffs



CU-ARC-2 includes HM-20 muffs



CU-ARC-1 includes Quattro™ Ear Plugs

EYE

HEAD/FACE

HEARING

CHAIN SAW

RESPIRATORY

Tectra™ Safety Caps — Smart Design Patent #D648,889

A merger of modern and traditional design — plus extra functionality, with special contours on sides accommodate ear muffs — in six popular colors

Eight ventilation holes improve air flow

Includes 29mm slot that accepts all accessories

Tectra™ caps easily integrate all hearing and face protection including competitor accessories.

Lightweight polypropylene shell Easy all-day comfort

Lightweight, rugged polypropylene shell

Swiveling nape strap For more secure fit under nape of head

Four suspension options

Hidden head-hugging suspensions — 4 or 6 Point ratchet and pin-lock styles — fit great and keeps protection in place

Rain channels so water doesn't run down the back of your neck

Vented and non-vented models available

Vented model has eight ventilation holes at the crown for improved air flow and wearer comfort

ANSI Z89.1-2009 Compliant for Type I Helmets

The non-vented caps comply with Class E, G, and C, and the vented version complies with Class C

Class C — Conductive — not intended for electrical hazards

Class G — General — low voltage, proof tested to 2,200 volts

Class E — Electrical — higher voltage, proof tested to 20,000 volts



Contoured sides accommodate ear muffs

29mm slots accept major brand of accessories



Ratchet or Pin-lock size adjustment options



4 or 6-point Pin-lock suspension



4 or 6-point Ratchet suspension



Chin Strap SCNS-30

Product No.

- SC-50-4P w/ color*
- SC-50-6P w/ color*
- SC-50-4R w/ color*
- SC-50-6R w/ color*

Description / Non-Vented Models

Tectra™ Safety Cap, Non-vented, w/ Four Point Pinlock Fabric Suspension. Class E, G and C
 Tectra™ Safety Cap, Non-vented, w/ Six Point Pinlock Fabric Suspension. Class E, G and C
 Tectra™ Safety Cap, Non-vented, w/Four Point Ratchet Fabric Suspension. Class E, G and C
 Tectra™ Safety Cap, Non-vented, w/Six Point Ratchet Fabric Suspension. Class E, G and C

Product No.

- SC-50V-4P w/ color**
- SC-50V-6P w/ color**
- SC-50V-4R w/ color**
- SC-50V-6R w/ color**

Description / Vented Models

Tectra™ Safety Cap, Vented, w/Four Point Pinlock Fabric Suspension. Class C
 Tectra™ Safety Cap, Vented, w/Six Point Pinlock Fabric Suspension. Class C
 Tectra™ Safety Cap, Vented, w/Four Point Ratchet Fabric Suspension. Class C
 Tectra™ Safety Cap, Vented, w/Six Point Ratchet Fabric Suspension. Class C

Product No.

- SCNS-30
- SCS-50-4P
- SCS-50-6P
- SCS-50-4R
- SCS-50-6R

Description / Accessories & Replacement Suspensions

Tectra™ Safety Cap Chin Strap
 Tectra™ Replacement Four Point Pinlock Fabric Suspension
 Tectra™ Replacement Six Point Pinlock Fabric Suspension
 Tectra™ Replacement Four Point Ratchet Fabric Suspension
 Tectra™ Replacement Six Point Ratchet Fabric Suspension



*Non-Vented: Orange, White, Red, Yellow, Blue, Graphite Silver.
 **Vented: Orange, White

BrushGuard™ & CoolGuard™

Designed specifically for Outdoor Power and Lawncare markets when head protection is not required. Great for hearing and face protection while using gas powered string trimmers, leaf blower, vacs and other power equipment.

Both products combine face protection with hearing protection for a lightweight integrated system designed to work together. Available in both nylon mesh (BrushGuard™) and in a polycarbonate shield (CoolGuard™) that meets ANSI Z87 impact resistance standards when protecting the face from flying particles is required.

Warning: OSHA requires workers to always wear ANSI Z87.1 safety eyewear in addition to the BrushGuard™ and CoolGuard™ or any safety shield.

Product No.	Description
FS-3000	Replacement Lexan® Shield for HB-3000, 8" x 16" x .04"
HB-3000	CoolGuard™ Equalizer™ SuperSeal Ear Muff w/Lexan® Face Shield, Black, NRR 27
HB-7000	BrushGuard™, Equalizer™ SuperSeal Ear Muff w/Nylon Mesh Visor, Black, NRR 27
NV-3000	Nylon Visor for HB-7000 or VK-3000
VK-3000	Visor Kit, Allows Attachment of Visors (FS-3000 or NV-3000) to HB-2000B and HB-5000B



HB-3000



HB-7000

Accessories

ELVEX® offers a line of face shield accessories to protect and extend the useful life of your face shield products.

Product No.	Description
SGB-100	Microfiber carrying bag for cap with shield



SGB-100

EYE

HEAD/FACE

HEARING

CHAIN SAW

RESPIRATORY



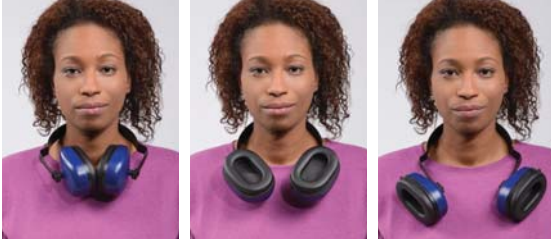


ELVEX. Where High Performance Meets High Value

Beyond reliable hearing protection, ELVEX® delivers on-the-job performance your workers need to be as productive and safe as possible. From electronic ear muffs to ear plugs, passive ear muffs in both cap mount and headband style — ELVEX® offers safety solutions for your most challenging acoustic environments and applications. You can trust ELVEX.®



Smart solutions. Incredible value.



Smart fold-out muffs rest on your shoulders — ready to don when re-entering a high-noise area.

This ELVEX® exclusive, worker-friendly feature allows ear muffs to sit comfortably on your shoulders when not in use. Workers are more productive because they can keep them handy for intermittent use. Four smart fold-out models include: ValueMuff™, MaxiMuff™, Equalizer™ and SuperSonic™. Pages 40–43

Ear muffs specifically designed to fit under safety caps.

These low-profile cap mount muffs have an exclusive “cut-out” design, or indentation at the top, so they fit perfectly under safety caps. Rugged, durable construction. Choose from four standard models — add them to virtually any cap in seconds! Pages 26–28, 43



Unique low profile “cut-out” to nest under rim of caps



Affordable, high-quality 2-way communications system that performs like a champ.

The Guide™ Communications System delivers clear, reliable person-to-person or group communications from transceiver to up to 8 receivers. System includes transceiver muff, receiver muffs and optional hand-held microphone. All Communication and Electronic ear muffs can be cap mounted. Page 45

Soft, washable, reusable plugs that offer high level of comfort and performance, yet low life cycle cost.

Patented Quattro™ ear plugs feature firm handles for quick, easy insertion/removal and improved hygienic handling. Four comfort-curved flanges with ultrasoft polymers put more material in contact with ear canal for custom fit and 27 NRR performance. Made in USA. U.S. Military national stock numbers assigned (NSN). Page 48



Expert advice.

These 29 NRR ear muffs are 12% lighter and have 20% lower headband pressure than the competition.

UltraSonic™ provides extrawide ear cushions and a soft padded head cushion for all-day comfort and superb full spectrum attenuation and low frequency attenuation. Fork-type stainless steel headband provides lowest, most consistent pressure at all temperatures.

Page 41



Hearing Protection Basics

Can you hear me now?

Continuous exposure to high noise levels without proper protection will cause your workers irreversible hearing loss. Understanding and communicating the critical nature of these risks is the key to an effective workplace hearing safety program. Here are some facts to help you get started.

OSHA says 90 dB per day, max!

OSHA permissible noise exposure is established at 90dB for an 8-hour work day. However, many industrial companies limit noise exposure based on the following guidelines:

NOISE LEVEL EXPOSURE

Noise Level	Duration
85 dB –	8 hours
88 dB –	4 hours
91 dB –	2 hours
94 dB –	1 hour
97 dB –	30 minutes
100 dB –	15 minutes
121 dB –	only 7 seconds

COMMON PAINFUL AND HAZARDOUS NOISE

PAINFUL Noise Levels	Example
160 dB –	Explosions from blasting
140 dB –	Jet engine take off
130 dB –	Jack hammer
120 dB –	Fire engine siren

HAZARDOUS Noise Levels	Example
110 dB –	Table saw, rock drill
100 dB –	Pneumatic drill, chain saw
90 dB –	Machine shop tools, grinder

Important Selection Considerations

- When selecting ear muffs, NIOSH recommends derating ear muff NRR ratings by 25%.
- When selecting ear plugs, NIOSH recommends derating muff plug ratings by 50 to 75%.
- When doubling up, using ear plugs and muffs, the National Hearing Conservation Association states that 5 NRR is added to the muff rating.



EYE

HEAD/FACE

HEARING

CHAIN SAW

RESPIRATORY

Dielectric Muffs with Smart Fold Out Feature

ValueMuff™

Lightweight and economical with virtually indestructible headband.

Exclusive ELVEX® “smart fold-out” design

Muffs fold-out and rest comfortably around neck when not in use

Virtually indestructible headband

Comfortable, yet tough and long-lasting

Rugged, fully dielectric construction

Protects workers from electrical shocks and shorts

Multi-position use with or without optional Support Strap

For compatibility when worn with other PPE

Soft, pliable SuperSeal™ ear cushions are long lasting and resist body oil and sweat Provide all-day comfort

Self-aligning suspension

Easily adjustable headband for quick fitting

25 NRR (ANSI) and 28 SNR (CE)

Protection Level: 99–109 dB

Visit Elvex.com for complete test results



HB-25



Smart fold-out design



Optional Support Strap

Product No.	Description
HB-25	ValueMuff™, Dielectric, Multi-Position, 7.8 oz./222 g., Blue/Black, CE, SNR 28, NRR 25
HK-25	Hygiene Kit, Ear Cushions & Foam Pads for HB-25 and HM-25
HB-35HB	Replacement Headband for HB-25/35
SS-25	Support strap for ValueMuff™ and MaxiMuff™

MaxiMuff™

High-performance, rugged and worker-friendly

Exclusive ELVEX® “smart fold-out” design

Muffs fold-out and rest comfortably around neck when not in use.

Cushioned, virtually indestructible headband

Comfortable, yet tough and long-lasting

Rugged, fully dielectric construction

Protects workers from electrical shocks and shorts

Multi-position use with or without optional Support Strap

For compatibility when worn with other PPE

Self-aligning suspension Easily adjusts muffs on headband for quick fitting

Soft, pliable SuperSeal™ ear cushions are long lasting and resist body oil and sweat Provide all-day comfort

28 NRR (ANSI) and 30 SNR (CE)

Protection Level: 101–111 dB

Visit Elvex.com for complete test results



HB-35



Smart fold-out design



Optional Support Strap

Product No.	Description
HB-35	MaxiMuff™, Dielectric, Multi-Position, 9.8 oz./278 g., Black/Red, CE, SNR 30, NRR 28
HK-35	Hygiene Kit, Ear Cushions & Foam Pads for HB-35
HB-35HB	Replacement Headband for HB-25/35
SS-25	Support strap for ValueMuff™ and MaxiMuff™

Slim Profile and Ultra-Lightweight Ear Muff

NEW

SonicSlim™

Ultra-thin, ultra-light, foldable.

Excellent in confined spaces

Low profile design with premium, padded headband for added comfort

Thin enough to fit comfortably in tight, confining work environment.

Folds to less than 5 inches wide

Compact and easy to store in small bag or drawer

Lightweight, contemporary design

Weighs only 8.1 ounces but delivers 21 NRR performance — with style.

Soft ear cushions are long lasting and resist body oil and sweat

Provides all-day comfort

21 NRR (ANSI)

Protection Level: 96–106 dB

26NRR when used with earplugs

Visit ELVEX.com for complete test results



HB-10Slim

Product No.	Description
HB-10-Slim	Sonic™ Slim Low Profile Foldable Muff, 8.1 oz. /230 g., Black, NRR 21
HK-10Slim	Hygiene Kit, Ear Cushions & Foam Pads for HB-10-Slim

Ultra-Lightweight Ear Muffs – 20% Lower Headband Pressure

UltraSonic™

Our most comfortable high attenuation muff — lighter than competitive models

Ultra-Lightweight Ear Muffs – 20% Lower Headband Pressure

29 dB Certified NRR to ANSI S3.19-1974

Superb full spectrum attenuation and superb low frequency attenuation

Extra wide ear cushions and a soft padded head cushion

Provide highest level of all-day comfort

Low force, fork-type stainless steel headband

Provides the lowest and most consistent pressure on the wearer's head at all temperatures

29 NRR (ANSI) and 34 SNR (CE)

Protection Level: 102–112 dB

Visit Elvex.com for complete test results



HB-650

HB-550

Product No.	Description
HB-650	UltraSonic™ Muff, Stainless Steel Headband, Wide Ear Cushions, 10.1oz./272g., Black, CE, SNR 34, NRR 29
HB-550	UltraSonic™ Foldable Muff, Wide Ear Cushions, Steel Headband, 10.5 oz./296g., Black, SNR 34, NRR 27
HK-650	Hygiene Kit, Ear Cushions & Foam Pads for HB-650 and HB-550

EYE

HEAD/FACE

HEARING

CHAIN SAW

RESPIRATORY

Ultra-Lightweight Ear Muffs – 20% Lower Headband Pressure

NEW COLOR

Flat-Liner™

Ideal choice for night time work, construction, airports and public works environments!

New Hi-Viz color

Where an increase in visibility is required

Ultra-Lightweight Ear Muffs— weighs only 8.2 oz. (232g)

20% Lower Headband Pressure

Offers highest level of all-day comfort

Maximizes speech communication

in moderate noise environments

Extra wide ear cushions and a soft padded head cushion

Provide highest level of all-day comfort

Low force, fork-type stainless steel headband

Provides the lowest and most consistent pressure on the wearer's head at all temperatures

26 NRR (ANSI) and 32 SNR (CE)

Protection Level: 99–109 dB

Visit Elvex.com for complete test results



HB-640Y

Product No.	Description
HB-640Y	Flat-Liner™ Muff, Stainless Steel Headband, 8.1 oz./230 g., Hi Viz Yellow/Black, CE, SNR 32, NRR 26
HK-640	Hygiene Kit, Ear Cushions & Foam Pads for HB-640Y

Dielectric Muffs with Pressure Release Headband

Equalizer™

Best combination of lightweight, comfort and performance

Pressure-release headband lowers headband pressure when placed on head

Provide high level of comfort for all-day use

Exclusive ELVEX® “smart fold-out” design

Muffs fold-out and rest comfortably around neck when not in use

Rugged, fully dielectric construction ,

Protects workers from electrical shocks and shorts

Self-aligning suspension

Easily adjusts muffs on headband for quick fitting

Soft, pliable SuperSeal™ ear cushions are long lasting and resist body oil and sweat

Provide all-day comfort

27 NRR (ANSI)

Protection Level: 101–111 dB

Visit Elvex.com for complete test results



HB-2000B



Smart fold-out design

Product No.	Description
HB-2000B	Equalizer™ Muff, Dielectric, SuperSeal Ear Cushions , 8.1 oz./230g., Black, NRR 27
HK-2000	Hygiene Kit, Ear Cushions & Foam Pads for HB-2000B/3000/5000B/7000 & HM-20/60/80
HB-2000HB	Replacement Headband for HB-2000B/3000/5000B/7000
SS-2000	Support strap for Equalizer™ and SuperSonic™

○ Dielectric Muffs with Pressure Release Headband

SuperSonic™

Lightest ear muffs in class deliver super comfort and performance

Exclusive ELVEX® “smart fold-out” design
Muffs fold-out and rest comfortably around neck when not in use

Unique pressure-release headband lowers headband pressure when placed on head
Provide high level of comfort for all-day use

Soft, pliable SuperSeal™ ear cushions are long lasting and resist body oil and sweat Provide all-day comfort

Self-aligning suspension
Easily adjusts muffs on headband for quick fitting

Rugged, fully dielectric construction
Protects workers from electrical shocks and shorts

29 NRR (ANSI)
Protection Level: 102–112 dB

Visit Elvex.com for complete test results



Smart fold-out design

HB-5000B

Product No.	Description
HB-5000B	SuperSonic™ Muff, Dielectric, SuperSeal Ear Cushions, 9.7 oz./274g., Black, NRR 29
HK-2000	Hygiene Kit, Ear Cushions & Foam Pads for HB 2000/3000/5000/7000 & HM-20/60/80
SS-2000	Support strap for Equalizer™ and SuperSonic™

ELVEX® QuickSnap™ Ear Muffs mount on most safety caps

ELVEX® is the Solution to Combining Head, Face and Hearing Protection
Because Hearing Protection is often incompatible with other Safety Equipment, workers can encounter problems when wearing add-on muffs simultaneously, until now. ELVEX® QuickSnap System is the solution — and the most functional system available.

Add ELVEX® Cap Mount Ear Muffs to: Bullard, ERB, Fibre Metal, Jackson, MSA V-Guard, North, Willson, Alpha/Beta, 3M, Salisbury, Dynamic, Sellstrom, Balance AC, American AllSafe and **ELVEX® Tectra™**. Plus many other major brands.

Features

- **Highest NRR rating for cap muff available, 28 NRR**
- **Choice of NRR levels: 25, 27 and 28**
- **Universal blade fits most slotted safety caps**
- **Dielectric construction**
- **Integrates with variety of face shields, visors and screens**
- **Can also be attached to non-slotted caps using ELVEX® Quick Slot QS-29**

See pages 26–28 for more details



ELVEX® QuickSnap™ Ear Muffs have a unique low profile “cut-out” to nest under rim of caps

Cap Mounted Ear Muffs

Product No.	Description	Protection Level
HM-20**	Low Profile Ear Muff, 8.1 oz./230g., NRR 25	99-109 dB
HM-60**	Large Volume Ear Muff, 8.5 oz./242g., NRR 27	101-111 dB
HM-80**	SuperSonic™ Ear Muff, 9.4 oz./268g., NRR 28	101-111 dB



HM-20**



HM-60**



HM-80**



Guide™ Communication System

Clear person-to-person and group communication in high-noise areas — best performing, most affordable system on market

All-in-one wireless system applications Perfect for two-way communications between work teams and for plant troubleshooting

VIP factory tour applications Transceiver broadcasts to up to 8 receivers and offers 3 channels to deliver high, interference-free sound quality with 75 foot range

Two person work team applications 2 transceivers provide two-way communication with interference-free sound quality

Transceiver's built-in microphone is noise-canceling and voice-activated; hand-held microphone also available Tour group leader can speak while sharing optional microphone for questions from tour group

Padded headband with low pressure, soft ear cushions Provides high level of comfort for long periods

All units use and include two AA batteries Transceiver battery life: 4-10 hours; receiver: 40 hours; hand-held microphone 4-10 hours

Low battery alert LED light Flash when batteries have approximately 20 minutes of life remaining

Low force, fork-type stainless steel headband Provides the lowest and most consistent pressure on the wearer's head at all temperatures

Tested for reliable performance ANSI rated to 25 NRR hearing protection; FCC certified

Also available in cap mount version as shown in photo at left

**25 NRR (ANSI)
Protection Level: 99–109 dB**

Visit Elvex.com for complete test results



COM-690
Transceiver



COM-691
Receiver



COM-699
Microphone

Product No.	Description
COM-690	Guide™ Transceiver Headset, AA Batteries, NRR 25
COM-691	Guide™ Receiver Headset, AA Batteries, NRR 25
COM-699	Guide™ Hand-Held Microphone, Voice Cancelling, Voice Activated, AA Batteries
COM-690-CAP-**	Guide™ Transceiver Headset, AA Batteries, NRR 25
COM-691-CAP-**	Guide™ Receiver Headset, AA Batteries, NRR 25

EYE

HEAD/FACE

HEARING

CHAIN SAW

RESPIRATORY

Plug-In™ / Receiver Muffs

Hearing protection with “plug-in” capability for communications or entertainment

Connect ear muffs to audio devices via stereo plug

Connects to most mobile phones, 2-way radios, MP3 players and other audio devices

Large volume control on muff plus two limiter options (82/85 dB)

Quickly adjust volume of both speakers up to maximum volume limits; no batteries required

Quality electronics Exceptional sound clarity from all devices

Includes coiled cord and four plug Connects to virtually any audio device

Extra wide ear cushions and a soft padded head cushion

Provide highest level of comfort

Lightweight design and materials Provide comfort over long periods of wear

Low force, fork-type stainless steel headband

Provides the lowest and most consistent pressure on the wearer’s head at all temperatures

29-36 dB NRS (Noise Reduction Statistic)

Also provides effective hearing protection

Available in cap mount version

25 NRR (ANSI)

Protection Level: 99–109 dB

Visit Elvex.com for complete test results



COM-610

Product No.	Description
COM-610	Plug-In™ Receiver Muff, 3.5mm Stereo Plug, 3 Adaptors (3.5 & 2.5mm mono, 2.5mm stereo), 12.8 oz./364 g., Grey, 82 dB limiter, NRR 25
COM-611	Plug-In™ Receiver Muff, 3.5mm Stereo Plug, 3 Adaptors (3.5 & 2.5mm mono, 2.5mm stereo), 12.8 oz./364 g., Grey, 85 dB limiter, NRR 25
COM-612	Plug-In™ Receiver Muff, 3.5mm Stereo Plug, 3 Adaptors (3.5 & 2.5mm mono, 2.5mm stereo), 12.8 oz./364g., Grey, 100 dB limiter, NRR 0
COM-610-CAP-**	Plug-In™ Receiver Muff, 3.5mm Stereo Plug, 3 Adaptors (3.5 & 2.5mm mono, 2.5mm stereo), 12.8 oz./364 g., Grey, 82 dB limiter, NRR 25
COM-611-CAP-**	Plug-In™ Receiver Muff, 3.5mm Stereo Plug, 3 Adaptors (3.5 & 2.5mm mono, 2.5mm stereo), 12.8 oz./364 g., Grey, 85 dB limiter, NRR 25
COM-612-CAP-**	Plug-In™ Receiver Muff, 3.5mm Stereo Plug, 3 Adaptors (3.5 & 2.5mm mono, 2.5mm stereo), 12.8 oz./364 g., Grey, 100 dB limiter, NRR 0
HK-600	Hygiene Kit, Ear Cushions & Foam Pads for COM-610/611/612

Level Dependent Impulse™ Filter Muffs

Listen to conversations and filter out harmful noise!

Electronically amplifies weak sounds/voices, suppresses impulse noise exceeding 82 dB

Allows close range communications in continuous or impulse noise environments: like stamping factories and shooting ranges

Affordable high-quality adjustable electronics and microphones

Provide excellent sound quality and performance No “choppy sounds”

3.5 mm audio jack for listen-only capability

Connects to most audio devices like smart phones, MP3 players or radios to allow workers to hear both auxiliary audio device and environment

Auto-off switch turns unit off after 4 hours, in case you forget

Extends battery life, only 2 AA batteries provide about 175 hours of operation

Comfortable padded headband with low pressure and soft ear cushions

Provides high level of comfort for long periods

Low force, fork-type stainless steel headband

Provides the lowest and most consistent pressure on the wearer’s head at all temperatures

Lightweight design Provides comfort over long periods

Available in cap mount version

25 NRR (ANSI)

Protection Level: 99–109 dB

Visit Elvex.com for complete test results



COM-655

Product No.	Description
COM-655	Level Dependent™, Impulse Filter, Input Jack, AAA batteries, 12.8 oz./ 364 g., Grey, 82 dB limiter, NRR 25
HK-600	Hygiene Kit, Ear Cushions & Foam Pads for COM-655
COM-655-CAP-**	Level Dependent™, Impulse Filter, Input Jack, AAA batteries, 12.8 oz./ 364 g., Grey, 82 dB limiter, NRR 25

QuieTunes™ AM/FM Stereo Radio Ear Muffs

Professional quality, feature-packed AM/FM radio ear muffs provide highest reception and sound clarity

Sensitive radio tuner offers quality FM and AM reception Workers can clearly listen to distant and weak stations with clarity

Built-in 3.5 mm audio jack connects to most audio devices Allows workers option to listen to MP3 players, com radios or smart phones

Electronics separated from the hearing protection cavities Prolongs life of electronics due to sweat and moisture

Auto-off switch turns unit off after 4 hours, in case you forget Extends battery life, provides approximately 150 hours of operation on two, easily replaceable AA batteries

Padded headband with low pressure and soft ear cushions Provides high level of comfort for long periods

Low force, fork-type stainless steel headband Provides the lowest and most consistent pressure on the wearer's head at all temperatures

Maximum speakers sound limited to safe 82 dB level with the use of a gain limiter Prevents harmful sound levels from radio or other devices

Ergonomic volume and tuning controls Adjust easily even with gloved hands

ANSI rated 28 dB to 36 dB depending on user skill level Provides excellent hearing protection

Available in cap mount version

**22 NRR (ANSI) and 27 SNR (CE)
Protection Level: 97–107 dB**

Visit Elvex.com for complete test results



COM-660

Product No.	Description
COM-660	QuieTunes™ AM/FM Stereo, Input Jack, AA batteries, 15.4 oz./437 g., Burgundy, CE, SNR 27, NRR 22
HK-600	Hygiene Kit, Ear Cushions & Foam Pads for COM-660
COM-660R	QuieTunes™ Rechargeable AM/FM Stereo, Input Jack, 16.1 oz./457g., Green, CE, SNR 27, NRR 22
COM-660-CAP-**	QuieTunes™ AM/FM Stereo, Input Jack, AA batteries, 15.4 oz./437 g., Burgundy, CE, SNR 27, NRR 22
COM-660R-CAP-**	QuieTunes™ Rechargeable AM/FM Stereo, Input Jack, 16.1 oz./457g., Green, CE, SNR 27, NRR 22
HK-600	Hygiene Kit, Ear Cushions & Foam Pads for COM-660R

Aware™ AM/FM Radio Ear Muffs

Combines environmental listening with AM/FM radio or audio devices

Amplifies other worker voices but suppresses sounds exceeding 82 dB while listening to radio Allows landscapers, industrial and outdoor workers close-range communications in noisy environments

Strong radio reception, quality sound and built-in audio jack Workers can enjoy listening to radio, MP3 players, com radios or smart phones

Electronics separated from the hearing protection cavities Prolongs life of electronics due to sweat and moisture

Auto-off switch turns unit off after 4 hours, in case you forget Extends battery life, provides approximately 150 hours of operation on two AA batteries

Comfortable padded headband with low pressure and soft ear cushions Provides high level of comfort for long periods

Maximum sound limited to safe 82 dB level with the use of a gain limiter Prevents harmful sound levels from radio or other devices

Low force, fork-type stainless steel headband Provides the lowest and most consistent pressure on the wearer's head at all temperatures

Ergonomic volume and tuning controls Adjust easily even with gloved hands

Available in cap mount version

**22 NRR (ANSI) and 27 SNR (CE)
Protection Level: 97–107 dB**

Visit Elvex.com for complete test results



COM-680

Product No.	Description
COM-680	Aware™ AM/FM Stereo, Impulse Filter Muff, Input Jack, AA batteries, 16.2 oz./459 g., Blue, 82 dB limiter, CE, SNR 27, NRR 22
COM-680-CAP-**	Aware™ AM/FM Stereo, Impulse Filter Muff, Input Jack, AA batteries, 16.2 oz./459 g., Blue, 82 dB limiter, CE, SNR 27, NRR 22
HK-600	Hygiene Kit, Ear Cushions & Foam Pads for COM-680

EYE

HEAD/FACE

HEARING

CHAIN SAW

RESPIRATORY

IMPROVED DESIGN - SOFTER FEEL - 27 NRR

Quattro™ Ear Plugs

Reusable plugs use patented design to deliver superior fit and comfort, easy insertion/removal and hygienic handling

Contoured 4-flange, ultra-soft polymer design puts more material in contact with ear canal Delivers all-day comfort and superior attenuation

Built-in, firm handle allows user to direct the angle of insertion, adapting to each ear canal Insertion and removal is easy and much more hygienic than rolling down foam plugs

Washable, reuse for weeks with no loss of comfort or effectiveness Lower life-cycle costs and increased economy

Universal size, self-contours to fit virtually any shape of ear canal Accommodates diverse workforce to simplify inventory control

Advanced non-allergenic polymer material Non-irritating, resistant to ear wax and body oils; outlasts PVC ear plugs

Five versions available Corded, un-corded, poly-bagged, plastic case with key-chain, metal detectable

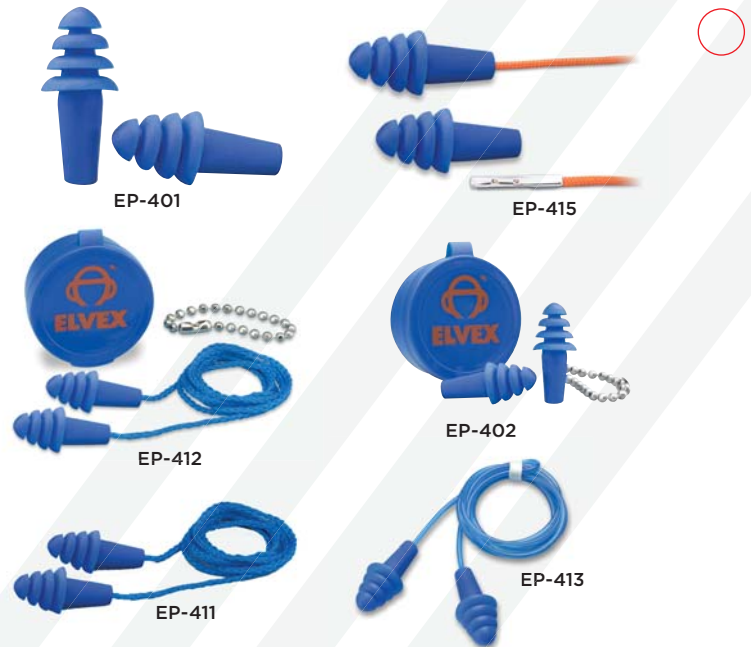
Independent and certified laboratory tested ANSI 27 dB NRR, CE 26 dB SNR

U.S. Military national stock numbers assigned (NSN)

Made in USA

**27 NRR (ANSI) and 26 SNR (CE)
Protection Level: 92–102 dB**

Visit Elvex.com for complete test results



Product No.	Description
EP-401	Reusable Ear Plug, Blue, NSN# 6515-01-492-0443, SNR 26, NRR 27
EP-402	Reusable Ear Plug, Blue, w/Case & Chain, NSN# 6515-01-492-0456, SNR 26, NRR 27
EP-411	Reusable Corded (woven nylon cord) Ear Plug, Blue, NSN# 6515-01-492-0458, SNR 26, NRR 27
EP-412	Reusable Corded (woven nylon cord) Ear Plug, Blue, w/Case & Chain, NSN# 6515-01-492-0461, SNR 26, NRR 27
EP-413	Reusable Corded (PVC cord) Ear Plug, Blue, SNR 26, NRR 27
EP-415	Reusable Corded (PVC cord) Metal Detectable Ear Plug, Blue, SNR 26, NRR 27

Uni-Fit™ Disposable Foam Ear Plugs

Soft, tapered, slow-expanding disposable foam earplugs offer easier insertion and better performance (32 NRR) than leading brands

Universal size correctly fits virtually any ear canal Accommodates diverse workforce to simplify inventory control

Slow expansion polyurethane foam that's softer, comfortable and easier to insert Improves user ability to achieve correct fit and benefit from excellent attenuation

Tapered shape with longer, thinner tip Easy to insert with adequate length to correctly insert and remove plug

Smooth surface and low pressure foam Provides extremely high comfort level

Choice of work-friendly, refillable dispensers for uncorded plugs Encourages compliance and saves space

High visibility orange color in corded and uncorded plugs Easy to see and monitor worker compliance

Multilingual packaging: English, Spanish and Mandarin Chinese

Available corded and uncorded in easy-to-use dispenser box

**32 NRR (ANSI) and 37 SNR (CE)
Protection Level: 96–106 dB**

Visit Elvex.com for complete test results



Product No.	Description
EP-151	Uncorded Disposable Foam Ear Plug, Orange, SNR 37, NRR 32
EP-151-BULK	Uncorded Disposable Ear Plug, Orange, Refill for Dispenser, SNR 37, NRR 32
EP-153	Corded (PVC Cord) Disposable Ear Plug, Orange, SNR 37, NRR 32
EPD-500	Uncorded Disposable Ear Plug Dispenser (filled), Orange, SNR 37, NRR 32

BLUE™ Disposable Foam Ear Plugs

Soft, slow-expanding earplugs offer easier insertion and better performance than leading brands

Contoured bell-shape foam with slow expansion rate inserts easily
Improves user ability to achieve correct fit and benefit from excellent attenuation while flange reduces possibility of too deep insertion

Soft low pressure polyurethane foam with smooth surface Provides all-day comfort to improve worker compliance

Universal size correctly fits virtually any ear canal Simplifies inventory control and accommodates diverse workforce

High visibility bright blue Easy to monitor and enforce proper ear plug usage

Available corded and uncorded in easy-to-use dispenser box

Multilingual packaging: English, Spanish and Mandarin Chinese

32 NRR (ANSI) and 34 SNR (CE)
Protection Level: 96–106 dB

Visit Elvex.com for complete test results



Product No.	Description
EP-251	Uncorded Disposable Foam Ear Plugs, Blue, SNR 34, NRR 32
EP-253	Corded (PVC Cord) Disposable Foam Ear Plugs, Blue, SNR 34, NRR 32

GelPods™ & GelCaps™ – Banded

Best intermittent hearing protection for noisy environments — tops for convenience and comfort

Designed to be worn around neck when not in use Workers are never without hearing protection

Insert or remove quickly – even with one hand Quick and convenient — for workers requiring intermittent hearing protection

Alternative for workers who dislike inserting ear plugs or heat buildup of muffs
Two design options to offer individualized comfort, workers choose most comfortable style

Excellent sound reduction in the low and high frequencies
Effective hearing protection in noisy environments

Attenuation in the speech frequencies is flat
Allows worker-to-worker communication in noisy areas

Highly visible protection Easy to monitor and enforce worker compliance

Ultra-soft material, 3X softer than reusable silicone ear plugs
Provides highest comfort level

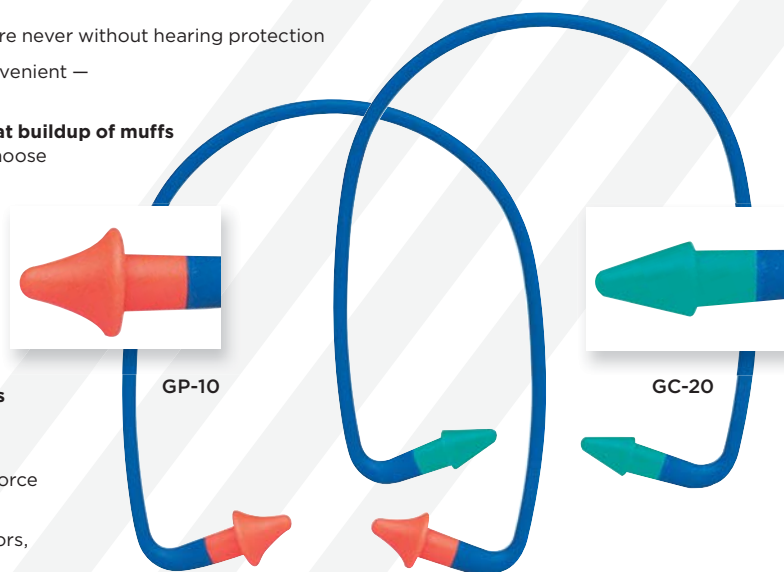
Universal size
Simplifies inventory control and accommodates diverse workforce

Use for intermittent noise applications
Outdoor airport workers, fork-lift operators, building contractors, power sources

GelPods: 23 NRR (ANSI) and 23 SNR (CE)
Protection Level: 92–102 dB

GelCaps: 18 NRR (ANSI) and 22 SNR (CE)
Protection Level: 89–99 dB

Visit Elvex.com for complete test results



Product No.	Description
GC-20	GelCaps™, Banded Canal Caps, Blue Band/Turquoise Caps, SNR 23, NRR 23
GC-21	Replacement GelCaps™ for GC-20, Turquoise
GP-10	GelPods™, Banded Ear Pods, Blue Band/Orange Pods, SNR 22, NRR 18
GP-11	Replacement GelPods™ for GP-10, Orange

EYE

HEAD/FACE

HEARING

CHAIN SAW

RESPIRATORY





ProGuard™

Chain Saw Safety Series: Head-to-leg protection designed by professionals

Danger is ever present, and that makes safety and reliability critically important to every chain saw and outdoor power equipment operator. That's why ELVEX® offers head-to-leg protection designed by professionals for workers at every skill level. And as the leader in high-performance, outdoor power safety gear, it's why many safety professionals prefer ELVEX.®



ProGloves™



ProChaps™

Safety, comfort & functionality for improved productivity

Already the industry-leader, ELVEX® has once again improved its Chain Saw Safety Series protection line. New features have been added to each product to provide you more value and longer product life — and with higher levels of safety, comfort and productivity for your workers.



ProGuard™ Integrated Logger System

Includes our professional-grade safety cap and exclusive integrated face and hearing protection that flips up and out of the way for increased on-the-job performance. Options are available for multiple applications, including dielectric (non-ventilated) and ventilated models with NRR Ratings of 25, 27, NRR.

ProChaps™ Series

Features our patented asymmetrical design for extended protection on left side of each leg; lightweight Prolar™ protective pads for safety and comfort. Stops chain saw in milliseconds. Also available in multiple lengths and now up to 43 inches, easy-on/easy-off apron style or with 100% wrap around calf protection.



ASTM F-1414, ASTM F-1897-2008



NEW

ProVest™ II

Features Prolar™ protective pads in the upper chest and shoulder area to protect against dangerous chain saw kickbacks; convenient *Productivity Pockets*, breathable outer fabric, plus mesh back panel and open sides for cooling in hot weather — adjustable side straps allow for jackets to be worn underneath in winter.



Prolar™ Protective Pad Technology

Prolar's performance secret is its unique “explosive” action which effectively jams the chain against the bar and the sprocket — quickly and safely stopping the cutting action in milliseconds. This ELVEX® exclusive design combines a unique fiber composition with special, multi-layer weaving process to create one of the most effective chain saw protective pads on the market. It is the culmination of years of ELVEX® R&D experience and continuous improvement and is the foundation of all our chainsaw protective clothing.

EYE

HEAD/FACE

HEARING

CHAIN SAW

RESPIRATORY

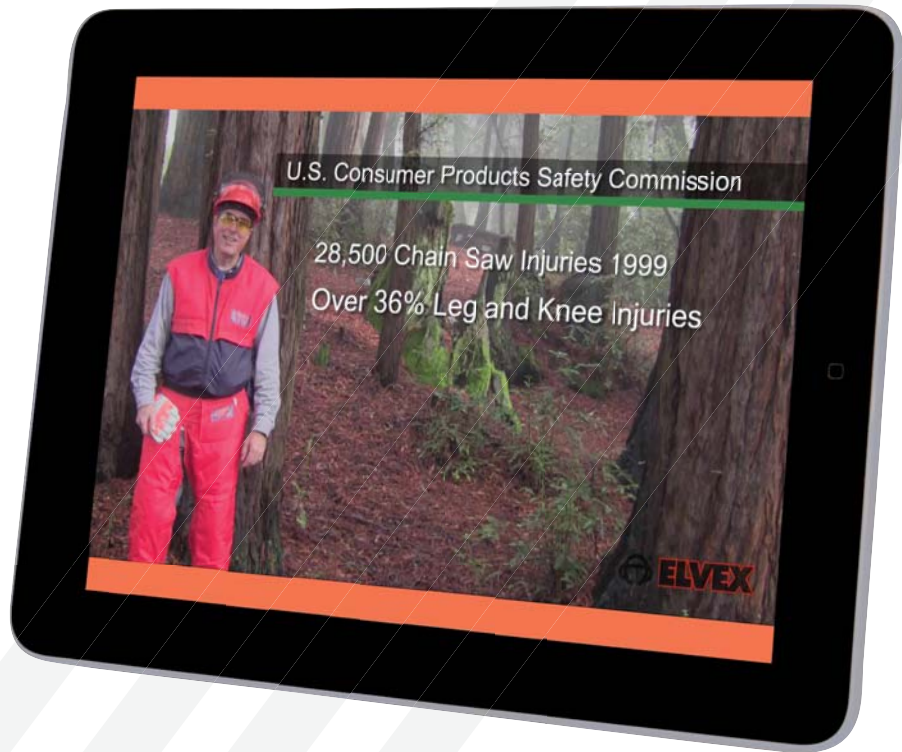
NEW

ELVEX® Safety Training: Expert Chain Saw Safety Training Videos

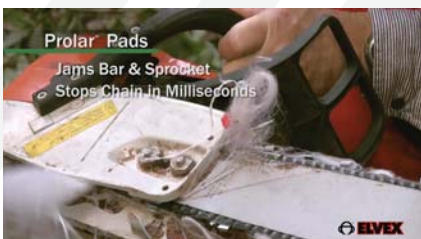
It may take an hour or so to learn proper chain saw safety — but it only takes a split-second to sustain a life-threatening chain saw injury. Encourage your employees to watch our video series before powering up your company's chain saws for the first time.

Training video topics include:

- Introduction to PPE — for Chain Saw Operators
- ProChaps™ with Prolar™ — stops chain in milliseconds
- ProGuard™ professional-grade head/face/hearing protection
- Tectra™ safety caps — New Product of the Year (OH&S - 2010)
- Eye Protection for Chain Saw Operators



View the ELVEX® Safety Training Videos at www.elvex.com



Employer Guide to Chain Saw Safety and OSHA

Severe injuries from chain saws

Logging, farming, grounds and line maintenance require the use of chain saws and other power equipment tools — increasing the risk of injury. Not only is the incidence rate high in these industries, but the severity of accidents are often life-threatening. In just a 12-month period recently, the U.S. Consumer Products Safety Commission reported over 42,800 chain saw injuries to both untrained workers and professional operators. So chain saw safety is an issue receiving national attention.



Employer responsibilities under OSHA

OSHA's Logging Operation Safety Rule (29 CFR 1910.266) covers all aspects of logging: work rules and procedures, equipment and equipment maintenance, training, record keeping, safe work practices and the mandatory use of safety equipment. The ruling makes the employer responsible for providing the safety equipment and enforcing its use.



OSHA's logging standard specifically requires the use of the following equipment by chain saw operators: gloves, boots, leg protection, safety caps, hearing, eye and face protection and first aid kits. Except boots, all of the equipment listed shall be provided by the employer at no cost to the employee.



Increased ASTM Standards for Leg Protection

Regulations governing test standards for Chain Saw Leg Protective Clothing (ASTM F-1897-2008) were revised in 2008 to increase the performance requirement for chain saw test speed to 2750 fpm (from 2500 fpm).

Tested by Underwriters Laboratories in accordance with ASTM F-1414

ELVEX® protective equipment meets and exceeds the higher chain saw speed requirement and delivers cut-resistance and comfort while limiting excess weight. ELVEX® ProChaps has been tested by Underwriters Laboratories in accordance with ASTM F-1414, Measurement of Cut Resistance to Chain Saw Lower Body Protective Clothing.

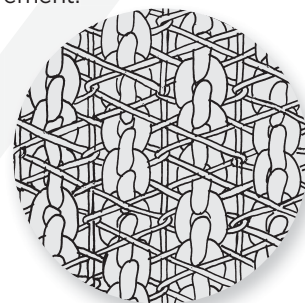


Exclusive Prolar™ Protective Pad Technology

ELVEX's chain-resistant clothing — including ProChaps™ and the ProVest™ — are assembled using bundles of Prolar protective pads. Prolar technology combines a unique fiber composition with special, multi-layer weaving process to create one of the most effective chain saw protective pads on the market. It is the culmination of years of ELVEX® R&D experience and continuous improvement.

How Prolar™ works

Prolar's performance secret is its unique "explosive" action which effectively jams the chain against the bar and the sprocket — quickly and safely stopping the cutting action in milliseconds. Thanks to its combination of safety, light weight and flexibility, Prolar has generated broad worker compliance and preference.



Approved by Underwriters Laboratories

ELVEX® Prolar™ pads have been tested in accordance with ASTM Standards by Underwriters Laboratories, and have passed all performance requirements, including the 2,750 feet per minute chain stopping capability. This test establishes a pass or fail, and does not establish maximum performance.

EYE

HEAD/FACE

HEARING

CHAIN SAW

RESPIRATORY

ELVEX® ProGuard™ System

Professional-grade safety cap with integrated face and hearing protection that flips up and out of way

ProGuard™ Integrated Logger System combines **three highly-functional components** that increase on-the-job efficiency, and deliver all-day comfort and maximum protection. There are plenty of options, too.

- Tectra™ safety cap, safety orange in dielectric or ventilated versions
- QuickSnap™ cap-mount ear muffs in black with medium profile
- Visor bracket and nylon screen, steel screen or Lexan® face shield

1. Tectra™ Award-Winning Safety Cap:

Lightweight contoured polypropylene shell in safety orange
Easy all-day comfort and excellent visibility

Two head suspension options: 6-point Ratchet or 6-point Pin-lock for personalized comfort with three height adjustments that improves balance and energy distribution on impact (see page 33 for more product details)

2. QuickSnap™ Cap-Mount Ear Muffs

Flip-out for short term breaks or flip-up on top of cap for longer periods

Two levels of hearing protection:

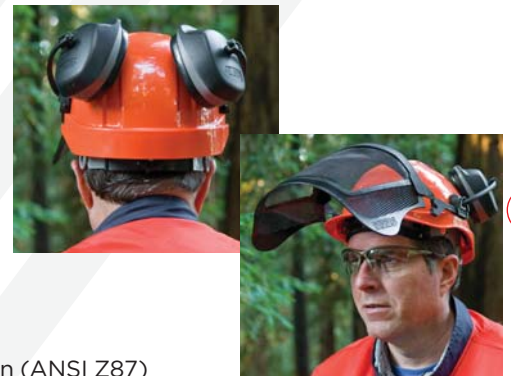
NRR, 25dB NRR, 27dB NRR (noise reduction rating)

3. Protective Face Shield Options

- Black nylon screen visor (NV-70) – provides ventilation (EN 1317)
- Black steel screen visor (SV-70) – provides ventilation (ANSI Z87)
- Clear molded aspherical Lexan® face shield – provides high-velocity protection (ANSI Z87)



ProGuard™ System with Lexan® face shield



ProGuard™ System with nylon screen face shield

Dielectric System

Standard (Non-Vented) Helmet Options: Tectra Safety Cap Meets Class E, G & C Requirements

CU-25	6-pt Pinlock Adj. Suspension Non-Vented Cap, Visor Bracket, Nylon Mesh Visor, Orange Cap/Black Muff, NRR 25
CU-30L	6-pt Ratchet Adj. Suspension Non-Vented Cap, Visor Bracket, Lexan® Faceshield, Orange Cap/Black Muff, NRR 25
CU-30R	6-pt Ratchet Adj. Suspension Non-Vented Cap, Visor Bracket, Nylon Mesh Visor, Orange Cap/Black Muff, NRR 25
CU-60R	6-pt Ratchet Adj. Suspension Non-Vented Cap, Visor Bracket, Nylon Mesh Visor, Orange Cap/Black Muff, NRR 27

Vented Helmet Options: Tectra Safety Cap Meets Class G & C Requirements

CU-25-V	6-pt Pinlock Adj. Suspension Vented Cap, Visor Bracket, Steel Mesh Visor, Orange Cap/Black Muff, NRR 25
CU-30L-V	6-pt Ratchet Adj. Suspension Vented Cap, Visor Bracket, Lexan® Faceshield, Orange Cap/Black Muff, NRR 25
CU-30R-V	6-pt Ratchet Adj. Suspension Vented Cap, Visor Bracket, Steel Mesh Visor, Orange Cap/Black Muff, NRR 25
CU-60R-V	6-pt Ratchet Adj. Suspension Vented Cap, Visor Bracket, Steel Mesh Visor, Orange Cap/Black Muff, NRR 27

SAFETY WARNINGS

Face shields: Steel and Nylon screens comply with ANSI Z87 drop ball impact test standards. For high velocity protection, choose Lexan® face shield which meets high mass and high velocity requirements.

Note: ANSI Z87 requires separate eye protection, suitable for the situation, in addition to any face shield.

Dielectric models: (non-ventilated) are non-conducting rated Class E; ventilated models should not be used where electrical hazards exist. Dielectric models have a nylon screen visor (NV-70), while the ventilated models have a steel mesh visor (SV-70).

ProChaps™ Series

Four sizes of Prolar™ lined chaps to protect legs from life threatening injury

Professional chain sawyers wear ProChaps™ because they protect their legs like no other, thanks to layers of Prolar™ inside. Prolar's unique fiber composition "explodes" when a chain makes contact — stopping and jamming a chain saw in seconds. ProChaps™ deliver reliable protection without sacrificing comfort and flexibility.

Features Prolar™ which effectively jams chain to quickly stop cutting action

Tested and certified by Underwriter Laboratories in accordance with ASTM-F-1414 and meets ASTM Standard F-1897-2008 that requires an upgraded level of protection to 2,750 feet per minute

Smart asymmetrical design (U.S. Patent No. 5,095,544)

Extended protection on left side of legs, where most injuries occur

Lightweight, breathable with open back design

Prevents heat build-up to keep workers comfortable in hot conditions

Apron-style design with quick-release buckles for waist and legs

Easy to put on and take off; buckles are durable acetate nylon

Full wrap-around calf protection available (91 Series)

Helps protect from sharp branches, thorns and heavy brush

Heavy-duty 1,000 denier Cordura nylon outer fabric available (91 and 94 Series)

Extra durability and longer wear in thorny, abrasive conditions

Four lengths plus adjustable waist belt

Lengths measured from waist include: 33", 36", 39", 43"

Includes zippered front pocket with large pull tab

Applications: for workers using chain saws and power equipment — clearing roadways, removing debris, trimming, logging, farming, utilities, public works and vegetation management



90 Series



91 Series

94 Series

ProChaps Series: safety orange, ASTM-UL Important: length measured from waist to bottom, not the inseam

Product No. – 90 Series Description

JE-9033	Apron Style, 420 Denier, Water Resistant, Orange, Length 33" from Waist
JE-9036	Apron Style, 420 Denier, Water Resistant, Orange, Length 36" from Waist
JE-9039	Apron Style, 420 Denier, Water Resistant, Orange, Length 39" from Waist
JE-9043	Apron Style, 420 Denier, Water Resistant, Orange, Length 43" from Waist

Product No. – 91 Series Description

JE-9133	Wrap-Around Calf Protection, 1000 Denier, Water Resistant, Orange, Length 33" from Waist
JE-9136	Wrap-Around Calf Protection, 1000 Denier, Water Resistant, Orange, Length 36" from Waist
JE-9139	Wrap-Around Calf Protection, 1000 Denier, Water Resistant, Orange, Length 39" from Waist
JE-9143	Wrap-Around Calf Protection, 1000 Denier, Water Resistant, Orange, Length 43" from Waist

Product No. – 94 Series Description

JE-9433	Apron Style, 1000 Denier, Water Resistant, Orange, Length 33" from Waist
JE-9436	Apron Style, 1000 Denier, Water Resistant, Orange, Length 36" from Waist
JE-9439	Apron Style, 1000 Denier, Water Resistant, Orange, Length 39" from Waist

Accessories

JE-BELT	Belt Extender for Chaps add up to 36"
JE-LEG	Leg Strap Extender for Chaps adds up to 6"
JE-Buckle-Small	Replacement Buckle for Leg Straps
JE-Buckle-Large	Replacement Buckle for Waist

EYE

HEAD/FACE

HEARING

CHAIN SAW

RESPIRATORY

ArborChaps™

Universal-size chaps for light-duty work around yard — with many features of ProChaps™

Features Prolar™ which effectively jams chain to quickly stop cutting action

Tested and certified by Underwriter Laboratories in accordance with ASTM-F-1414 and meets ASTM Standard F-1897-2008 that requires an upgraded level of protection to 2,750 feet per minute

Smart asymmetrical design (U.S. Patent No. 5,095,544) Extended protection on left side of legs, where most injuries occur

Apron-style design with two sets of quick-release leg buckles Easy to put on and take off

Universal size, three sets of belt loops allow length adjustment
33 to 36 inch leg heights fit most workers

JE-8000



Product No.	Description
JE-8000	ArborChaps, Apron Style, 420 Denier, Hunter Green, Universal Size - Adjustable from 33" - 36"

NEW DESIGN

ProVest™ II

More protection, comfort plus six Productivity Pockets!

Industry's top-selling vest is now even better! Designed using feedback from professional sawyers, our improved ProVest™II has Prolar™ padding to protect the sawyer's upper chest and shoulder area from dangerous saw kickbacks, and more great features:

Protects upper chest and shoulders from kickbacks
Features same multi-layered Prolar™ padding as ProChaps™

Features unique Prolar™ explosive action —
Effectively jams chain in milliseconds to stop cutting action

Breathable, water-resistant 65/35 poly-cotton blend
Helps keep you cool and dry all-day

Open side design with mesh back panel
For cooling in hot weather — side buckles are adjustable so jackets can be worn underneath in winter.

Six handy pockets: 4 outside-front, 2 inside
Carry gear and personal items to save time, improve productivity

Four full-cut sizes with multi-point adjustments and over/under sizing Great fit, comfort and maneuverability for workers with thin/wide girths, with/without coats



ProVest™II

ProVest: safety orange, water resistant, 65/35 Poly-Cotton, Blue Mesh

Product No.	Description
JE-70SM	Water Resistant, 65/35 Poly-Cotton Blend, Orange, Small, 36" - 38"
JE-70M	Water Resistant, 65/35 Poly-Cotton Blend, Orange, Medium, 38" - 42"
JE-70L	Water Resistant, 65/35 Poly-Cotton Blend, Orange, Large, 42" - 46"
JE-70XL	Water Resistant, 65/35 Poly-Cotton Blend, Orange, X-Large, 46" - 52"

ProGloves™ and ProMitts™

Safe handling of chain saws begins with ProGloves™ and ProMitts™

In event of a chain break, Pro-Gloves™ and Pro-Mitts™ provide critical layers of Prolar™ protection where it's needed most — on the back of the left hand. Choose which is best for you, based on working conditions, equipment and personal preferences.

ProGloves™:

Prolar™ protection on back of left hand Effectively jams chain to quickly stop cutting action. Certified to world's leading standard: CE EN 388:4244 and CE EN 381-7, Design A, Class 1-20(m/s)

Premium grade, soft, durable cowhide leather palms
Provide superior grip and durability

Extended leather cuffs with Velcro closure
Customizes fit and keeps out saw dust, chips and debris

Rugged, wet-weather construction
Water-resistant nylon fabric on upper side and suede skin on the inside for better wet weather gripping power

ProMitts™:

Prolar™ protection on back of left hand and fingers. Effectively jams chain to quickly stop cutting action. Certified to world's leading standard: CE EN 388:4244 and CE EN 381-7, Design B, Class 1-20(m/s)

Two-finger trigger finger design
Reduces trigger-finger fatigue, keeps fingers strong and ready to use

Keeps fingers together Retains warmth in cold weather and reduces muscle strain

Extended leather cuffs with Velcro closure
Customizes fit and keeps out saw dust, chips and debris

Rugged, wet-weather construction Water-resistant nylon fabric on upper side and suede skin on the inside for better wet weather gripping power



JEGLV-50



JEMIT-50

Pro-Gloves™ safety orange, water resistant nylon, blue leather

Product No.	Description
JEGLV-50-SML	Cowhide Leather Palm Gloves, Suede Gauntlet Cuff, Prolar®, Blue/Orange, Small
JEGLV-50-MED	Cowhide Leather Palm Gloves, Suede Gauntlet Cuff, Prolar®, Blue/Orange, Medium
JEGLV-50-LG	Cowhide Leather Palm Gloves, Suede Gauntlet Cuff, Prolar®, Blue/Orange, Large
JEGLV-50-XL	Cowhide Leather Palm Gloves, Suede Gauntlet Cuff, Prolar®, Blue/Orange, X-Large

Pro-Mitts™ safety orange, water resistant nylon, blue leather

Product No.	Description
JEMIT-50-MED	Cowhide Leather Palm Mitts, Suede Gauntlet Cuff, Prolar®, Blue/Orange, Medium
JEMIT-50-LG	Cowhide Leather Palm Mitts, Suede Gauntlet Cuff, Prolar®, Blue/Orange, Large
JEMIT-50-XL	Cowhide Leather Palm Mitts, Suede Gauntlet Cuff, Prolar®, Blue/Orange, X-Large



JE-WP

ProWedge Pouch™

A handy place to hold your tools

Clever wedge pouch attaches to sawyer's belt and provides room for two large wedges, one small wedge, and side pockets for wrench and a chain saw file — all safely within reach of the sawyer in the field.

Product No.	Description
JE-WP	Wedge Pouch w/Belt Loop, 1000 Denier, 3.5" Wide for Wedges, 2" Wide Pocket Holds Wrench & Saw File, 13" Long, Side Vents, Orange

EYE

HEAD/FACE

HEARING

CHAIN SAW

RESPIRATORY

NEW for 2014

Save 30% over valved N95 disposables

- Upgrade to the comfort of a valved N95 at the price of a non-valved N95 Price!
- Better stability with non-collapsing design.

Air-Safe™ Reusable N95 Respirator with VFF™ Technology

Delivers the ease of use and hygiene of a disposable N95 with superior wearer comfort and acceptance.



Simple On/Off Filter Lock.

Replaceable N95 filters deliver a clean, hygienic, filtering face piece at a fraction of the cost of a disposable N95 respirator.

Sliding strap with clasp allows easier adjustments for a secure and stable fit.

Valved Filter Frame (VFF) provides support for the replaceable N95 filter and prevents collapsing during use. Washable with soap and water, delivering many weeks of daily wear.

Low-cost replaceable N95 filter and N95 for nuisance level OV relief filter are available.



Patent Pending

Air-Safe™ N95 Reusable Respirators

Workers appreciate all-day comfort and on-the-job performance

Applications: NIOSH approved for protection from solid or liquid particles that do not contain oil.

Performance Features	Benefit
VFF™ Technology Valved Filter Frame (Patent Pending)	Easy filter replacement for significant cost savings and inventory reduction. Form-fitting frame allows even pressure for consistent face seal. Resists accidental crushing and will not collapse when wet. Go Green – Less waste generated vs. disposables
Built in exhalation valve	Lowers breathing resistance, easier to exhale, less fatigue. Exhaled breath is directed downward reducing eyewear fogging. Limits build-up of warm, moist exhaled breath. Reduces CO ₂ build-up.
Heavy-duty, nylon adjustable head bands with hinge clasp	Easily adjusts for a secure custom fit. Longer durability with easier donning and removal.
Nuisance level Organic Vapor relief model*	Eliminates annoying odors that bother workers and increases productivity.
Latex Free	No common allergens so workers are worry free.



Air-Safe™ Reusable Respirator

*Nuisance level organic vapor and odor relief for vapor concentrations NOT exceeding the OSHA PEL or applicable governmental safety and health exposure limits, whichever is lower.

Product No.	Description
RSP-950V-RU-KIT	One (1) Air-Safe N95 Valved Filter Frame, plus 10 N95 Replacement Filters. (TC-84A-5274)
RSP-950V-RU-FIL	Box of 20 Air-Safe N95 replacement filters in sealed bag. 20/Bag. (TC-84A-5274)
RSP-C-950V-RU-KIT	One (1) Air-Safe N95 Valved Filter Frame, plus 10 N95 Replacement Filters with Nuisance Level OV Relief in sealed bag. 10/Box. (TC-84A-5398)
RSP-C-950V-RU-FIL	Box of 20 Air-Safe N95 replacement filters with Nuisance Level OV Relief in sealed bag. 20/Box. (TC-84A-5398)
RSP-RFF	Valved Filter Frame (RFF) for Air-Safe Reusable Respirators. 10 RFF/ Bag

Air-Safe™ N95 Disposable Respirators

3 Smart Cost Saving Options for your respirator program: · Comfortable · Economical · Performance

Applications: NIOSH approved for protection from solid or liquid particles that do not contain oil.

Performance Features	Benefit
Advanced Electrostatic microfiber filter media	Low breathing resistance improves performance and breathing efficiency.
Durable, highly elastic braided nylon head bands staple-fastened outside breathing zone	Maintains comfortable tension for a secure fit. No staple holes in the breathing area to cause leaks.
Curved nose clip with smooth, closed cell foam nose pad	Follows nose contour and bends for a better seal. Creates comfortable cushion seal between nose and mask. Reduces potential eyewear fogging.
Over-sized exhalation valve on models RSP-950V, RSP-C-950V	Lowers breathing resistance, easier to exhale, less fatigue. Breath directed downward to reduce fogging. Limits build-up of warm, moist exhaled breath. Reduces CO ₂ build-up.
Nuisance level organic vapor relief RSP-C-950V only*	Eliminates annoying odors that bother workers and increases productivity.



RSP-950



RSP-950V



RSP-C-950V*



Inside RSP-950 and RSP-950V

*Nuisance level organic vapor and odor relief for vapor concentrations NOT exceeding the OSHA PEL or applicable governmental safety and health exposure limits, whichever is lower.

Product No.	Description
RSP-950	N95 Disposable Respirator without valve, Latex-free fabric head strap. 20 Box. (TC-84A-5522)
RSP-950V	N95 Disposable Respirator with exhalation valve, Latex-free fabric head strap. 10 Box. (TC-84A-5523)
RSP-C-950V	N95 Disposable Respirator with exhalation valve, Nuisance Level Organic Vapor Relief, Latex-free fabric head strap. 10 Box. (TC-84A-5524)

EYE

HEAD / FACE

HEARING

CHAIN SAW

RESPIRATORY

By Product Number

Eye Protection

Product #	Page
GG-15C-AF	9
GG-15G-AF	9
GG-25C-AF-AS	22
GG-25C-AF-SMOKE	22
GG-30-AF	22
GG-30G-AF	22
GG-35-AF	22
GG-40A-AF	8
GG-40C-AF	8
GG-40G-AF	8
GG-40WS2-AF	8
GG-41C-AF	8
GG-41G-AF	8
GG-45A-AF	8
GG-45A-AF-DCAMO	8
GG-45C-AF	8
GG-45C-AF-DCAMO	8
GG-45G-AF	8
GG-45G-AF-DCAMO	8
GG-45WS3-AF	8
GG-45WS5-AF	8
RL-30-AF	22
RL-35-AF	22
RL-45A-AF	8
RL-45C-AF	8
RL-45G-AF	8
RL-45WS3-AF	8
RL-45WS5-AF	8
RL-56A	16
RL-56BB	16
RL-56C	16
RL-56C-AF	16
RL-56I/O	16
RL-56M	16
RX-3I-Insert	9
RX-100-1.0	13
RX-100-1.5	13
RX-100-2.0	13
RX-100-2.5	13
RX-100-3.0	13
RX-100G-1.0	13
RX-100G-1.5	13
RX-100G-2.0	13
RX-100G-2.5	13
RX-100G-3.0	13
RX-200-1.0	13
RX-200-1.5	13
RX-200-2.0	13
RX-200-2.5	13
RX-200-3.0	13
RX-200G-1.0	13
RX-200G-1.5	13
RX-200G-2.0	13
RX-200G-2.5	13
RX-200G-3.0	13
RX-300-1.0	13
RX-300-1.5	13
RX-300-2.0	13
RX-300-2.5	13
RX-300-3.0	13
RX-300G-1.0	13
RX-300G-1.5	13
RX-300G-2.0	13
RX-300G-2.5	13

RX-300G-3.0	13
RX-350BR-1.0	12
RX-350BR-1.5	12
RX-350BR-2.0	12
RX-350BR-2.5	12
RX-350BR-3.0	12
RX-350C-1.0	12
RX-350C-1.5	12
RX-350C-2.0	12
RX-350C-2.5	12
RX-350C-3.0	12
RX-400-1.0	12
RX-400-1.5	12
RX-400-2.0	12
RX-400-2.5	12
RX-400-3.0	12
RX-400A-1.0	12
RX-400A-1.5	12
RX-400A-2.0	12
RX-400A-2.5	12
RX-400A-3.0	12
RX-400G-1.0	12
RX-400G-1.5	12
RX-400G-2.0	12
RX-400G-2.5	12
RX-400G-3.0	12
RX-500C-0.5	11
RX-500C-0.75	11
RX-500C-1.0	11
RX-500C-1.5	11
RX-500C-2.0	11
RX-GG-40C-AF-1.5	11
RX-GG-40C-AF-2.0	11
RX-GG-40C-AF-2.5	11
RX-GG-40G-AF-1.5	11
RX-GG-40G-AF-2.0	11
RX-GG-40G-AF-2.5	11
SG-10C	21
SG-12A	19
SG-12A-CAMO	19
SG-12C	19
SG-12C-AF	19
SG-12C-CAMO	19
SG-12G	19
SG-12G-AF	19
SG-12G-CAMO	19
SG-12-I/O	19
SG-12-I/O-CAMO	19
SG-12M	19
SG-13C	20
SG-13C-AF	20
SG-13G	20
SG-13-I/O	20
SG-14A	18
SG-14B	18
SG-14C	18
SG-14C-AF	18
SG-14G	18
SG-14G-AF	18
SG-14-I/O	18
SG-14M	18
SG-15A	20
SG-15C	20
SG-15C-Bulk	20
SG-15G	20
SG-15G-Bulk	20
SG-15-I/O	20

SG-15M	20
SG-17C	18
SG-17C-AF	18
SG-17G	18
SG-17-I/O	18
SG-17M	18
SG-18A	17
SG-18C	17
SG-18C-Slim-BLK	17
SG-18C-AF	17
SG-18C-AF-Slim-BLK	17
SG-18C-BLK	17
SG-18C-Slim-Blue	17
SG-18C-Slim-PINK	17
SG-18G	17
SG-18G-AF-BLK	17
SG-18G-AF-Slim-BLK	17
SG-18-I/O	17
SG-24C	17
SG-24C-AF	17
SG-24G	17
SG-24G-AF	17
SG-24-I/O	17
SG-24M	17
SG-24M-BLK	17
SG-24PL	17
SG-25WS3	21
SG-25WS5	21
SG-27C	14
SG-31A-AF	9
SG-31C-AF	9
SG-31CB-AF	9
SG-31G-AF	9
SG-31WS3-AF	9
SG-31WS5-AF	9
SG-37A	14
SG-37C	14
SG-37G	14
SG-51A	19
SG-51BB	19
SG-51BLUE	19
SG-51C-AF	19
SG-51C	19
SG-51G	19
SG-51G-AF	19
SG-51-I/O	19
SG-51M	19
SG-51WS1.4	19
SG-53A	10
SG-53C	10
SG-53C-AF	10
SG-53-I/O	10
SG-55A	15
SG-55C	15
SG-55C-AF	15
SG-55C-AF-SF	15
SG-55C-SF	15
SG-55G	15
SG-55I/O	15
SG-55I/O-SF	15
SG-55M	15
SG-55P	15
SG-55P-SF	15
SG-56A	16
SG-56BB	16
SG-56C	16
SG-56C-AF	16

SG-56I/O	16
SG-56M	16
SG-57C	14
SG-57G	14
SG-200C	20
SG-200G	20
SG-200-I/O	20
SG-350C	16
SG-350C-GREY	16
SG-350G	16
SG-350LB	16
SG-350M	16
SG-350PL	16
SG-400C	18
SG-400C-AF	18
SG-400G	18
SG-400-I/O	18
Safety Glass Cords	23
Storage Cases & Bags	23

Head/Face Protection

Product #	Page
BR-29	29
BR-93	29
CU-ARC-1	33
CU-ARC-2	33
CU-ARC-3	33
CU-ARC-4	33
CU-ARC-5	33
FS-12L	31
FS-12LG	31
FS-12PC	30
FS-15ACE	30
FS-15CL	31
FS-15L	31
FS-15LG	31
FS-15P	30
FS-15PC	30
FS-15W55	31
FS-16PC	30
FS-16PC-AF	30
FS-18ARC10	31
FS-18CL	31
FS-18GL	31
FS-18L	31
FS-18L-CP	31
FS-18LG	31
FS-20ARC10	31
FS-3000	35
FS-ARC40-18-V	31
FS-ARC40-V	31
HB-3000	35
HB-7000	35
HD-ARC-FR3	33
HG-25	32
HG-35	32
HG-70	32
HG-80	32
HM-20**	28
HM-60**	28
HM-80**	28
NV-70	32
NV-3000	35
QS-29	29
SA-29	29
SA-93	29

SC-50-4P w/color*	34
SC-50-4R w/color*	34
SC-50-6P w/color*	34
SC-50-6R w/color*	34
SC-50V-4P w/color**	34
SC-50V-6P w/color**	34
SC-50V-4R w/color**	34
SC-50V-6R w/color**	34
SCNS-30	34
SCS-50-4P	34
SCS-50-6P	34
SCS-50-4R	34
SCS-50-6R	34
SGB-100	35
SV-15H	32
SV-70	32
SV-75	32
VB-10	29
VB-30	29
VB-50	29
VB-60	29
VK-3000	35

Hearing Protection

Product #	Page
COM-610	46
COM-610-CAP-**	46
COM-611	46
COM-611-CAP-**	46
COM-612	46
COM-612-CAP-**	46
COM-655	46
COM-655-CAP-**	46
COM-660	47
COM-660-CAP-**	47
COM-660R	47
COM-660R-CAP-**	47
COM-680	47
COM-680-CAP-**	47
COM-690	45
COM-690-CAP-**	45
COM-691	45
COM-691-CAP-**	45
COM-699	45
EP-151	48
EP-151 BULK	48
EP-153	48
EP-251	49
EP-253	49
EP-401	48
EP-402	48
EP-411	48
EP-412	48
EP-413	48
EP-415	48
EPD-500	48
GC-20	49
GP-21	49
GP-10	49
GP-11	49
HB-10-Slim	41
HB-25	40
HB-35	40
HB-35HB	40
HB-550	41
HB-640Y	42

By Product Name

HB-650	41
HB-2000B	42
HB-2000HB	42
HB-5000B	43
HK-10Slim	41
HK-25	40
HK-35	40
HK-600	45
HK-640	42
HK-650	41
HK-2000	42
HM-20**	43
HM-60**	43
HM-80**	43
SS-25	40
SS-2000	42

Chain Saw Protection

Product #	Page
CU-25	56
CU-25-V	56
CU-30L	56
CU-30L-V	56
CU-30R	56
CU-30R-V	56
CU-60R	56
CU-60R-V	56
JE-70L	58
JE-70M	58
JE-70SM	58
JE-70XL	58
JE-8000	58
JE-9033	57
JE-9036	57
JE-9039	57
JE-9043	57
JE-9133	57
JE-9136	57
JE-9139	57
JE-9143	57
JE-9433	57
JE-9436	57
JE-9439	57
JE-BELT	57
JE-Buckle-Small	57
JE-Buckle-Large	57
JEGLV-50-MED	59
JEGLV-50-LG	59
JEGLV-50-SML	59
JEGLV-50-XL	59
JE-LEG	57
JEMIT-50-LG	59
JEMIT-50-MED	59
JEMIT-50-XL	59
JE-WP	59

Respiratory Protection

Product #	Page
RSP-950	61
RSP-950V	61
RSP-950V-RU-FIL	61
RSP-950V-RU-KIT	61
RSP-C-950V	61
RSP-C-950V-RU-FIL	61
RSP-C-950V-RU-KIT	61
RSP-RFF	61

Eye Protection

Product Name	Page
Acer	19
Atom	18
Avion	17
Avion SF	17
BrowSpecs	9
Challenger	21
Denali	16
Elite	20
Eyewear Accessories	23
Flex-Pro	15
Flex-Pro SF	15
Go-Specs II	8
Go-Specs III	9
Go-Specs	8
Legionnaire	22
OVR-Spec III	14
OVR-Spec II	14
OVR-Spec I	14
Ranger	21
Reflect-Specs	10
RX-100	13
RX-200	13
RX-300	13
RX-350	12
RX-400	12
RX-500	11
RX Go-Specs	11
Sonoma	16
Sphere-X Ultimate	19
TNT	20
Trix	18
TTS	20
Visionaire	22
Xenon	18
XTS	17

Head/Face Protection

Product Name	Page
BrushGuard	35
Cap Mount Ear Muffs	28
Complete ARC Kits	33
CoolGuard	35
Economy Face Shields	30
Mesh Screens	32
Molded Polycarbonate Face Shields	30
Molded Specialty Face Shields	31
Premium Molded Lexan Face Shields	31
Replacement Bracket Arms	29
Slot Adaptor Blades	29
Tetra Safety Caps	34
UltiMate Headgear and Systems	32
Visor Brackets	29

Hearing Protection

Product Name	Page
Aware AM/FM Radio Ear Muffs	47
BLUE Disposable Foam Ear Plugs	49
Equalizer	42
Flat-Liner	42
GelPods & GelCaps Banded	49
Guide Communication System	45
Level Dependent Impulse Filter Muffs	46
MaxiMuff	40
Plug-In	46
Quattro Reusable Ear Plugs	48
QuickSnap Ear Muffs	43
Quietunes AM/FM Stereo Radio Ear Muffs	47
SonicSlim	41
SuperSonic	43
UltraSonic	41
Uni-Fit Disposable Foam Ear Plugs	48
ValueMuff	40

Chain Saw Protection

Product Name	Page
ArborChaps	58
ProChaps	57
Pro-Gloves and Pro Mitts	59
ProGuard System	56
ProVest II	58
ProWedge Pouch	59

Respiratory Protection

Product Name	Page
N95 Disposable Respirators	61
N95 Reusable Respirators	61

Elvex® Global Reach

For more than 35 years ELVEX® has been serving the PPE needs of companies and individuals worldwide. Over those years we have built a strong global distribution footprint to make sure that wherever PPE needs exist, we can deliver quality products when and where you need them. The map below shows the many countries in which we currently have distribution centers established to serve your PPE needs.



Why Elvex®

Easy to Work With - Customers repeatedly tell us we are “easy to work with” — a comment we like to hear, because it speaks to the way we like to do business.

Your call is answered personally - During business hours you will be greeted by a member of our customer service team, not an automated phone system. After a while, we may even recognize your voice!

No red tape here - If you have a special request or an order that’s a bit out-of-the-ordinary, don’t worry. You’ll get a quick response, often by just “holding” while we walk down the hall and get your answer on the spot.

98% of orders shipped within 24-48 hours received - Today that’s a big deal, because many customers don’t have the room or budget to stock every size and style of safety gear.

Free samples and volume discounts - We want to make your job easy and help you look good. So everything is free until you decide to buy. And the more you buy the more you save.

Your first purchase is almost as easy as your next - Account set-up is quick and paperless — and major credit cards are accepted.



U.S.A. and International Sales

Email	Sales@elvex.com
U.S. Toll Free	1.800.888.6582
Phone	1.203.743.2488
U.S. Toll Free Fax	1.800.666.1226
Fax	1.203.791.2278