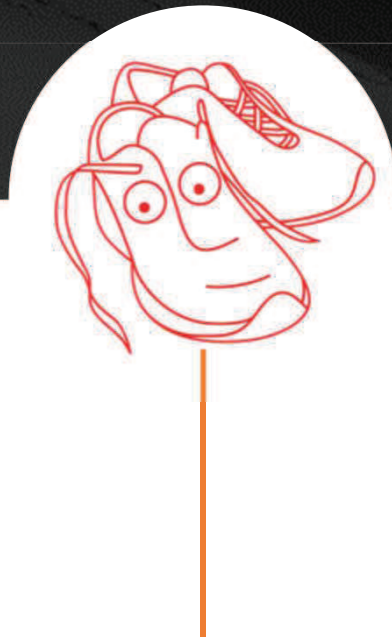
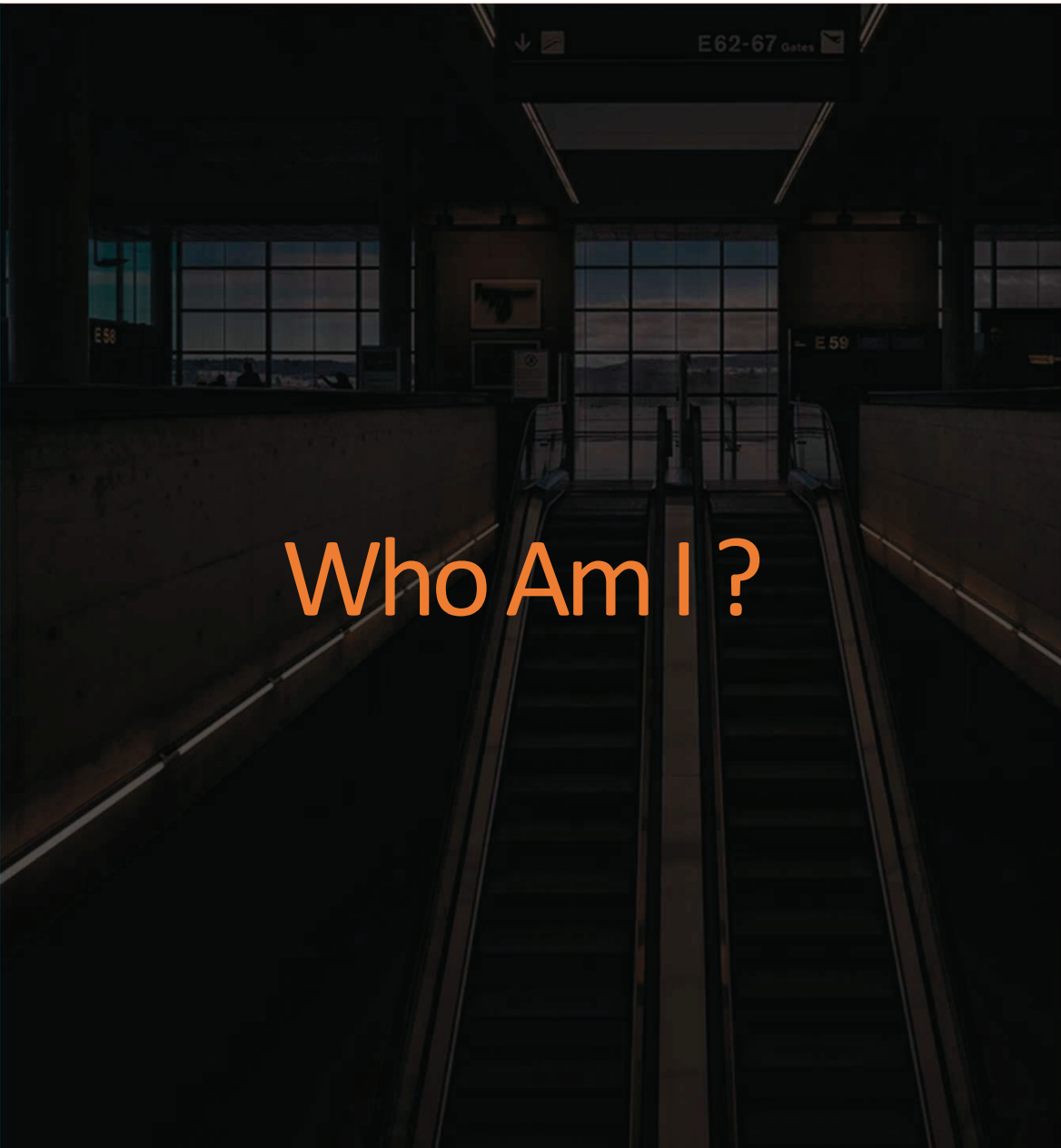


Using *In My Shoes* in assessments for the Family Courts

London 2019





Who Am I?

Clinical Psychologist

Family Court

Child Protection/Child Welfare

Clinical Issues

1. Complex Family Dynamics



2. Abuse

3. Child Mental Health



4. Parental Mental Health

5. Domestic Violence



6. FII

7. Traumatic Death/Murder



8. CSE and Gangs



Questions

- 1 Assessment and description of children's needs
- 2 Formulation / Aetiology of difficulties
- 3 Significant Harm
- 4 Attachments and Relationships
- 5 Care, placement, contact, therapy

Structured Assessment

Stage 1



Ice Breaker Game
Start Cognitive Assessment
In My Shoes Part 1

Stage 2



Questionnaires
In My Shoes Part 2/3
Family Tree

Stage 3



In My Shoes Part 4
Understanding of Situation

Stage 4



Family Relations Test

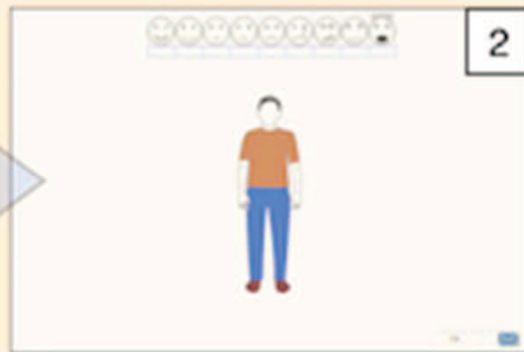
In My Shoes

Part One

In My Shoes - navigation



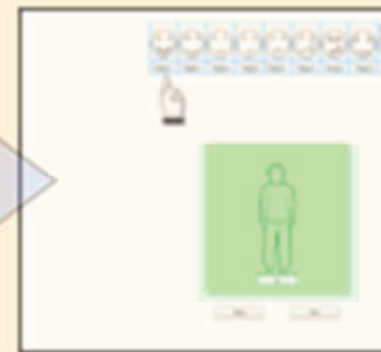
Introduction



Emotions



Emotions & Scenes



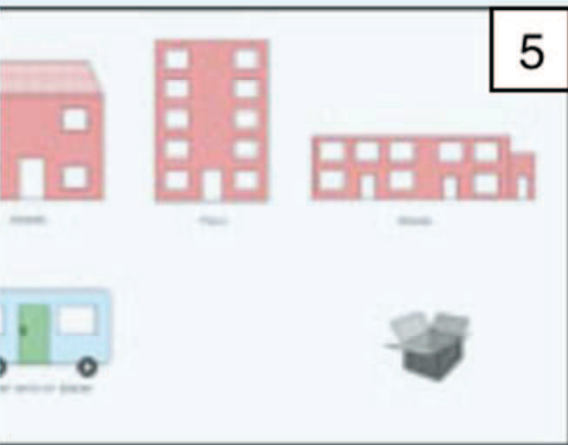
Have You Ever

In My Shoes

Part Two

Setting

Where you live now



Places



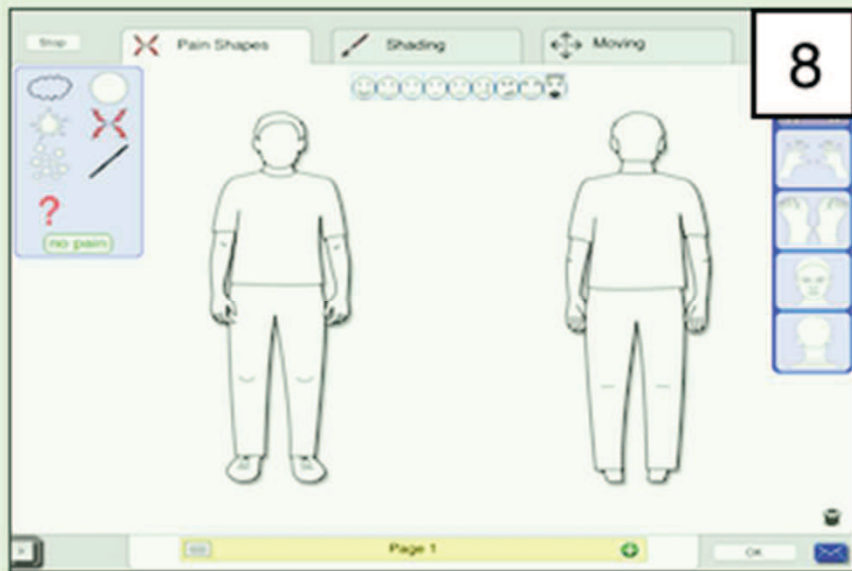
People



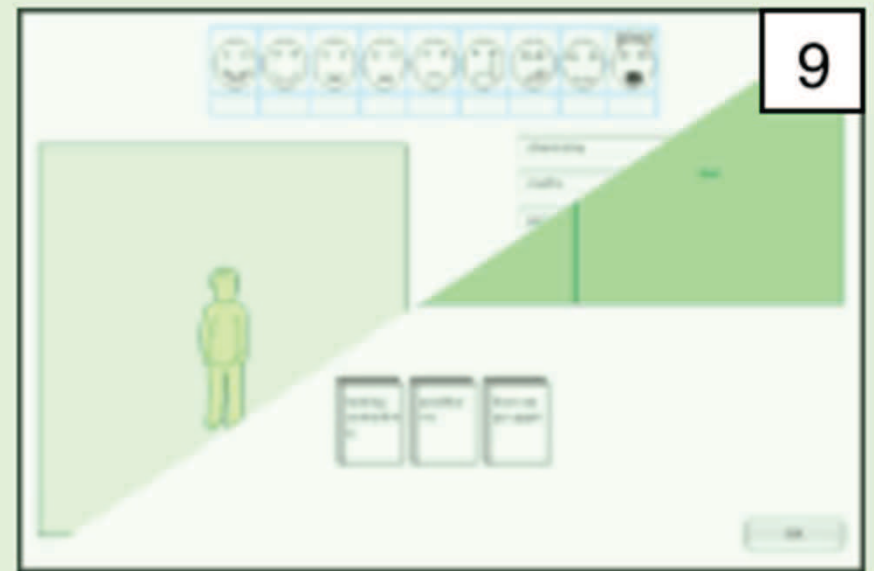
Emotions & People

In My Shoes

Part Three



Somatic Experiences



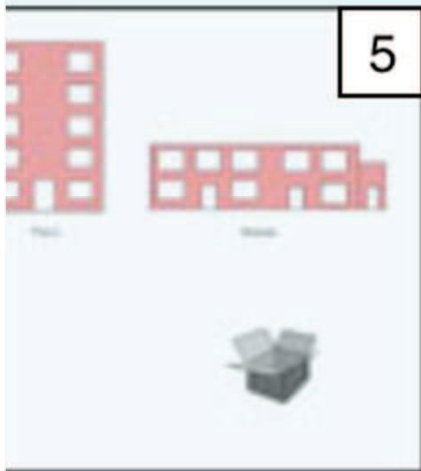
Experiences

In My Shoes

Part Four

Setting

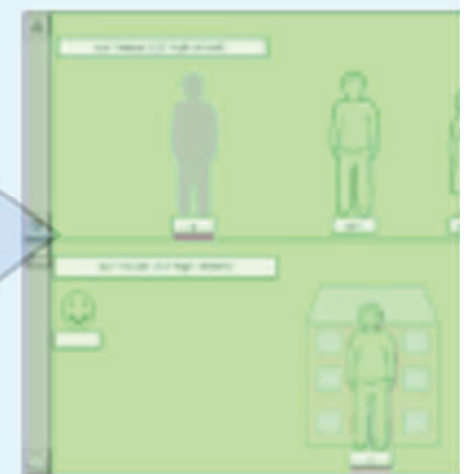
Where you used to live



Places



People



Emotions & P

Why I use In My Shoes

1



Structured
Assessment

2



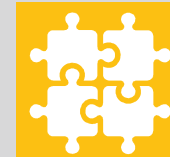
Familiar
Medium

3



Good
Engagement

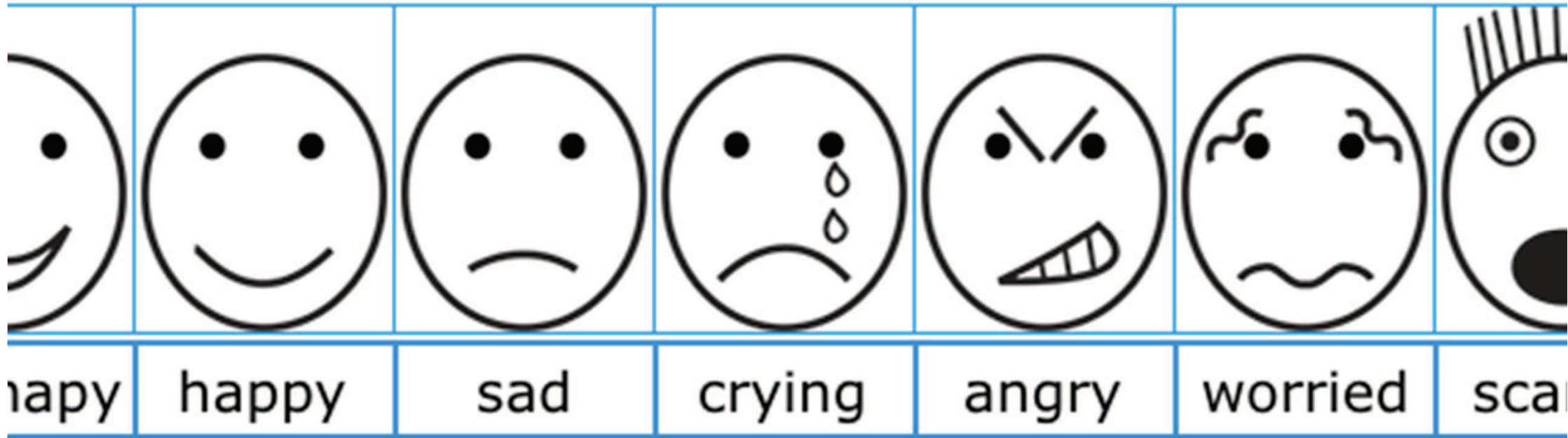
4



Evidentially
Robust

Case Example

Layla



Have You Ever ...?

What makes you feel Big Happy?

dont hit you

OK



Layla

Have You Ever ...?

What makes you feel like Crying?



Thank you



Vicki Hamilton