

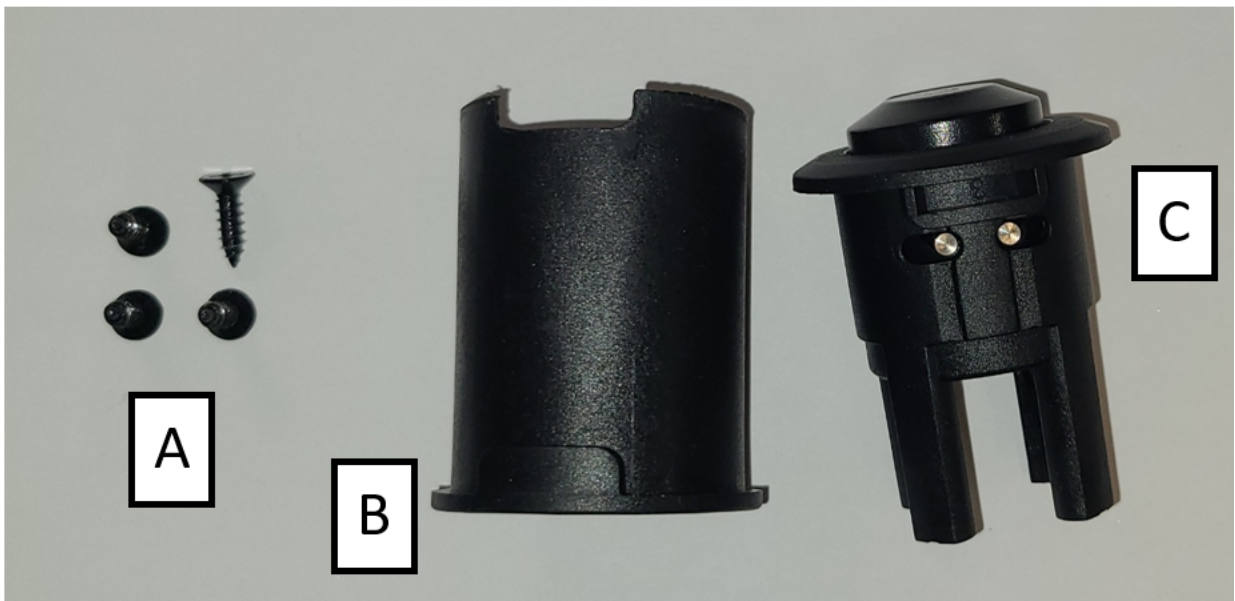


TECHNICAL NOTE
Swivel Housing Replacement Instructions
February 2022



Tools Required

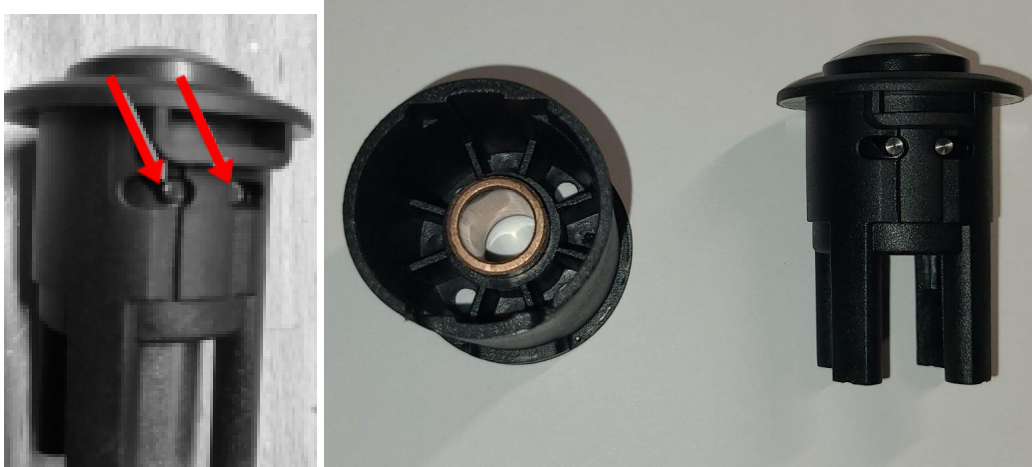
- #2 Phillips head screwdriver



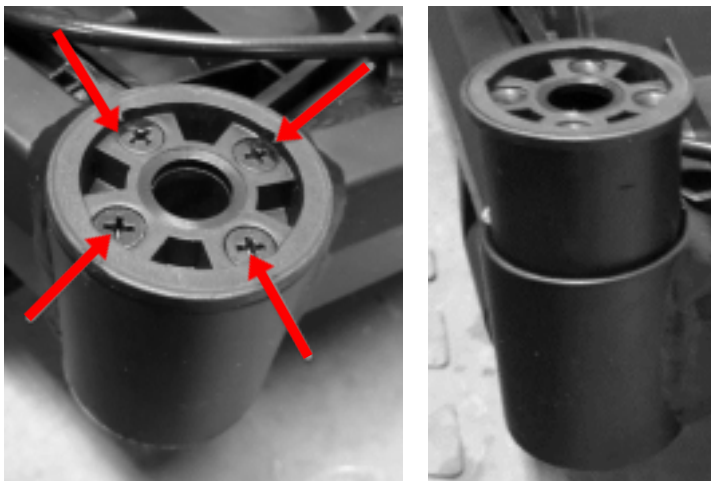
Replacement Parts Required

- A- (4) Phillips screw
- B- Lower Swivel Housing
- C- Upper Swivel Housing

Caution! DO NOT COMPRESS THE SWIVEL RELEASE BUTTON when the top half and bottom half of the swivel housing are separated. Doing so will release the pins highlighted in the picture below and will have to be reinstalled into their slots.



Step 1 : Remove existing swivel housing by removing 4x screws and pulling bottom and top halves of the swivel housing out of the Cruiser frame.



Step 2 : Install new swivel housing by reversing step

