

Supplies

- Fabric for Main Panel, Color blocked Hem, and accent (see measurements below)

Pieces and Sizing

Color Block Hem
ALL SIZED: 8" x 42" (20.3 cm x 107cm)

Accent ALL SIZED: 2" x 42" (5 cm x 107cm)

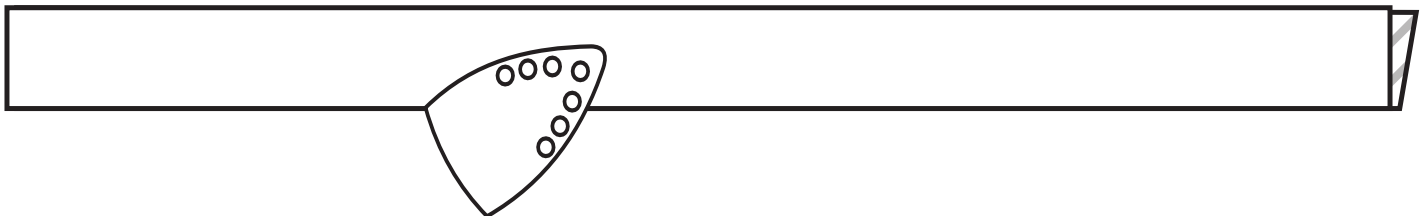
Main Panel
Standard: 24" x 42" (61 cm x 107cm)
Queen: 28" x 42" (71 cm x 107cm)
King: 34" x 42" (86 cm x 107cm)
Body: 52" x 42" (132 cm x 107cm)

1

For this tutorial I'll be making the standard size. Cut all fabric based on the size/s you've chosen.

2

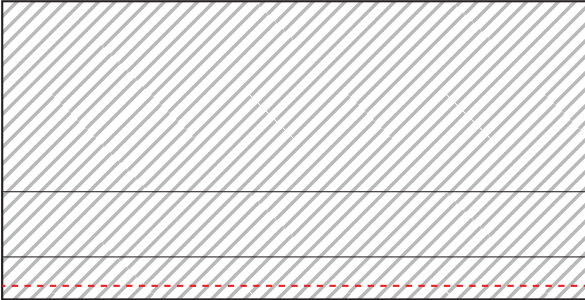
Fold the Accent piece wrong sides together, matching the long, raw edges and press.





3

Place the Color blocked Hem piece right side up. Line up the raw, folded edge of the Accent piece with one of the long, raw edges of the Color blocked Hem piece. Clip/pin in place. Baste using a 1/4" Seam allowance.



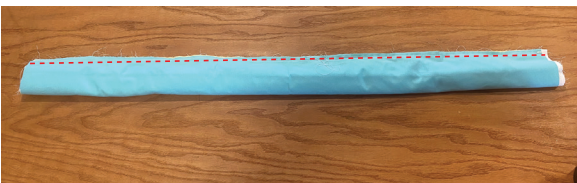
4

With right sides together, line up the long, raw edge of the Main Panel with the basted, long, raw edge of the Colorblocked Hem/Accent. Clip/pin in place. Sew using a 3/8" Seam allowance.



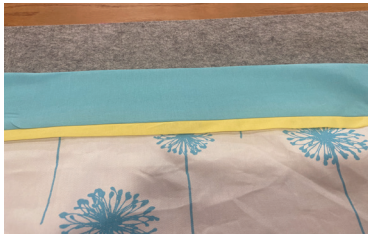
5

Start with the Main Panel right side up. Beginning at the bottom of the un-sewn, long, raw edge of the Main Panel, start rolling the Main Panel up toward the Color Blocked Hem/Accent. Keep rolling until the Main Panel rests in the middle(ish) of the Color blocked Hem/Accent.



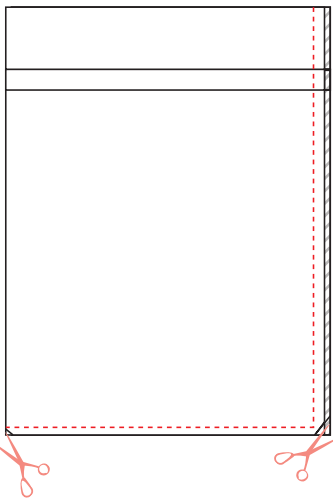
6

Take the remaining UNSEWN raw edge of the Color blocked piece and bring down to meet the long, raw, sewing edge of the other side. This will place the rolled Main Panel inside the Color blocked Hem/Accent. Clip/pin in place and sewing using a 3/8" seam allowance.



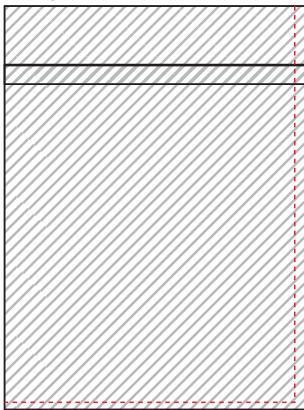
7

From one side of the "tube" pull the Main Panel out and press



8

With wrong sides together, fold the completed panel, matching the side and bottom raw edges. Clip/pin in place. Sew along raw edges using a 1/4" seam allowance. Clip corners. Optional: trim seam allowance



9

Turn pillowcase wrong side out (this means right sides will be together). Press again, if necessary. Clip/pin the seam sewn in step 8. Sew along this seam using a 3/8" seam allowance. Be sure to backstitch and the beginning and end.

Turn your pillow case right side out and you're all done!

