

WARRANTY

Lamination Depot warrants the TB-CD600B against any defects for 12 months from the date of original purchase. Warranty does not cover normal wear and tear, nor damage caused by operator error or misuse. Should any defect appear within 12 month warranty from date of purchase we will gladly repair or replace the machine. To start a warranty claim within 12 months from date of purchase please contact our customer service team by calling (800) 925-0054 or by email service@laminationdepot.com.

To process your warranty claim, the machine must be returned in its complete original packaging to avoid incidental damages in transit by the carrier of your choice. Lamination Depot does not cover shipping costs for claims nor is responsible for any damages caused by the carrier.

Upon evaluation of the machine and determination of the actual defect, the machine will be restored to its original factory specifications and will be shipped back to you free of charge using the carrier of our choice. If the machine cannot be restored, a replacement will be provided.

This warranty covers all defects incurred in the normal use of the equipment except in the following cases:

- Damage to the equipment due to improper operation, abuse, mishandling or failure to follow the operating instructions.
- Removal or alteration of the serial number.
- Service or modification done by anyone other than a certified technician authorized by Lamination Depot.

This warranty is valid only within the United States or its provinces/territories and Canada.

contact us:
800.925.0054
service@laminationdepot.com



ATTENTION



- Read this manual carefully before using the machine.
- Do not allow children to operate the machine.
- Keep the machine away from heat and moisture.
- To prevent injury and/or damage to the machine, ensure that it is on a flat, stable surface before using.
- Do not attempt to punch more than the indicated capacity, as it may jam or damage the machine.

TRUBIND

Heavy Duty Electric Comb Binding Machine TB-CD600B

OPERATION GUIDE



25

Page Punch
Capacity

F4

Maximum
Sheet Size

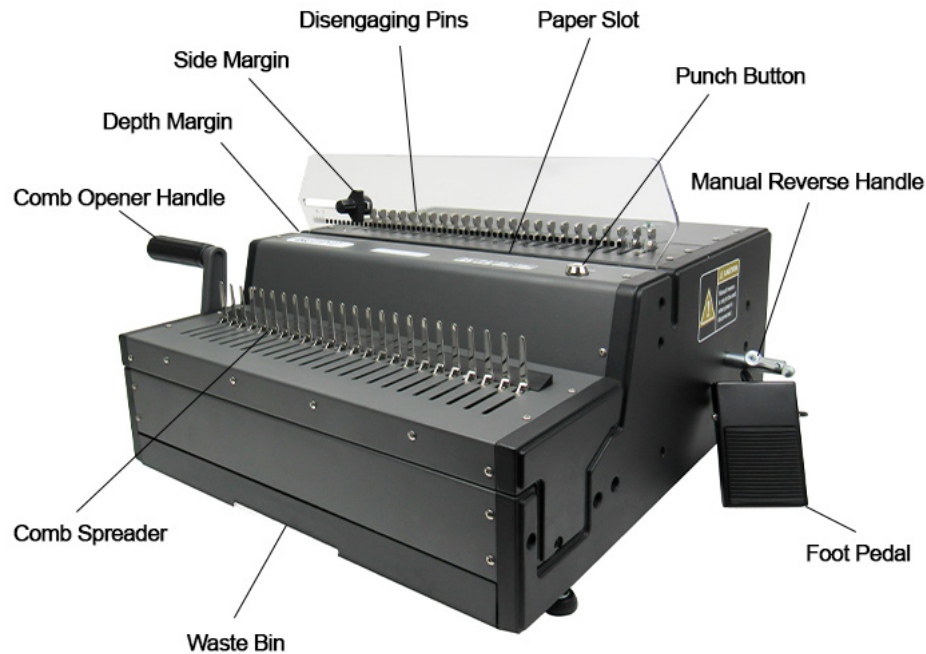
500

Page Binding
Capacity

24

Disengagable
Dies

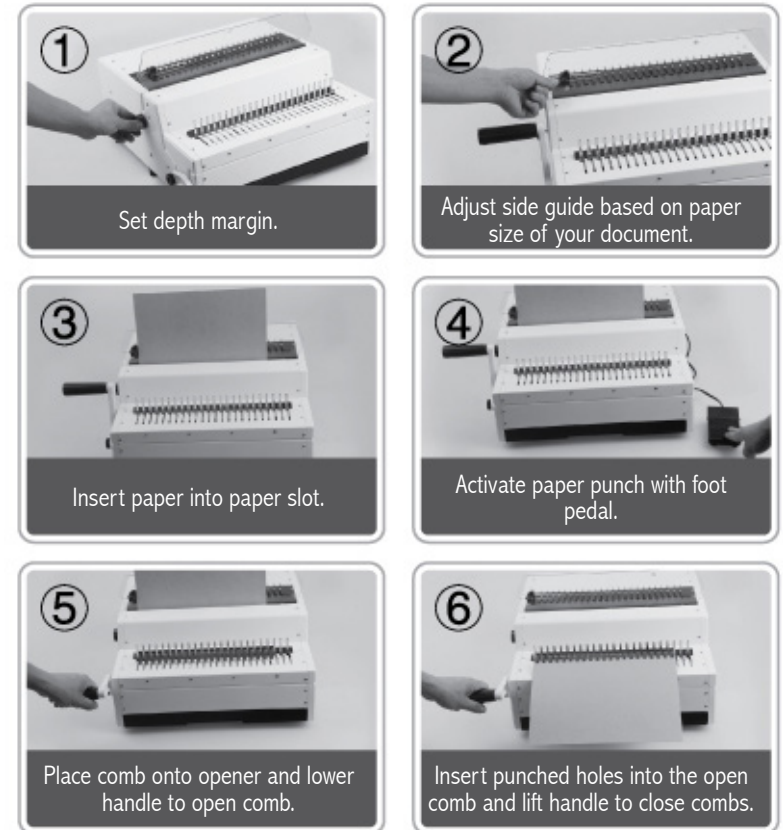
MACHINE OVERVIEW



MACHINE SPECIFICATIONS

Model:	TB-CD600B
Punch Operation:	Electric
Pitch:	19 Ring
Punch Capacity:	25 sheets (based on 20 lb. paper)
Max. Binding Length:	12.99"
Binding Capacity:	2" (approx. 500 pages)
Depth Margin:	Adjustable (2.5mm, 4.5mm, and 6.5mm)
Disengageable Dies:	Fully-disengageable (24 dies)
Comb Inserter:	Open/Close Handle Control
Dimensions:	16.9" x 17.7" x 7.9"
Net Weight:	62 lbs.
Warranty:	1 year

OPERATION GUIDE



HELPFUL HINTS

- Use the fully-disengageable pins to eliminate any partially-punched holes that appear along the edge of your sheet.
- If pages are stuck, release the pins by pressing the reverse button located on the top of the machine. Once retracted, remove paper and reinsert with less sheets.
- Empty the waste bin regularly to prevent jams and reduce machine wear.
- Before punching your document, try punching a test sheet to ensure that the machine has been set appropriately.
- To maintain your punch, spray a small amount of lubricant onto a sheet of paper and punch through it. Follow by punching a clean sheet to remove any residue.
- If punching cover stock or thick paper, you will need to reduce the number of sheets per punch in order to avoid jamming the machine.