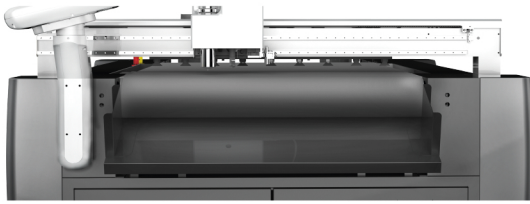


Digital Die Cutter for 35 inch x 47 inch sheets



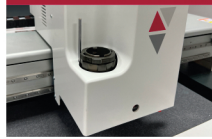
Integrated Touch Interface



Roll Feed Attachment



Universal Cutting Tool



Cost effective Digital Cutting System

The Eclipse X Series 1007 Digital Die Cutter is a versatile sheet-fed flatbed cutting system requiring no dies designed for the printing, packaging, and sign industries. It is a cost-effective solution for custom shape contour cutting, perfect for sample making, prototyping, packaging, tags, cards, pocket folders on corrugated board, foam, pvc, adhesive sheets, cardstock and other materials. Process materials up to 16mm in thickness and up to B1 size (27"x39") sheet size on a continuous feed and cut platform. Use the roll feed attachment for 24" wide roll material processing.

No Cutting Dies

The Eclipse X 1007 is integrated with 5 tool positions capable of being used on a single sheet. Process materials with the Universal Cutting Tool, Electric Oscillating Tool, Drag Knife, Kiss-Cut Tool, or Creasing Wheel. Options available for perforation and V-Cut Tools.

Automatic Feeding System

The Eclipse X 1007 is designed continuous feed and cut production of short- to long-run processing with the fully automated feed system and conveyor. Eliminating the need for a dedicated operator, the Eclipse uses a high-definition CCD Camera to position materials by reading registration marks for precise cutting. The Eclipse X 1007 is also capable of feeding, registering, and processing two 13"x19" sheets for faster production on digital materials.

Software

Eclipse Software Suite features Design Manager and Cut Software designed for file preparation of PDF, PLT, DXF, HP/GL and is compatible with Kasemake, Artios, CAD, Adobe Illustrator, Box Magician and much more. The Eclipse is capable of working with most RIP programs for quick workflow management such as Onyx, Caldera, or Fiery. QR/Barcode management system is available.

Stacker

Designed for continuous feeding of material stack up to 15.5" tall or 573lbs.

Features

- ▶ Up to 5 tools on a single sheet.
- ▶ Process two 13"x19" sheets at a time with dual feeding.
- ▶ Universal Cutting Tool for 16mm thick materials.
- ▶ Automatic feeding system for continuous operation.
- ▶ Optional QR code management system.
- ▶ Integrated roll feed attachment for roll to sheet processing.

Combine the Eclipse X 1007 with the Matrix Laminator foil fusion machine to create high end cards, brochures and packaging with foil or soft touch lamination.



ECLIPSE X 1007

Digital Die Cutting System

WORKFLOW



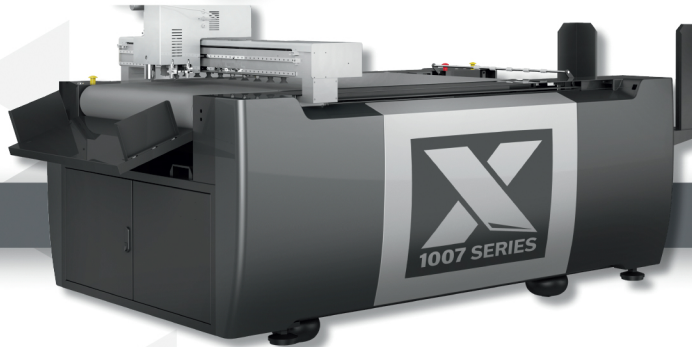
Mimaki TxF150-75
Heat Transfer Inkjet Printer



Digital printing prototyping & short-run production

Laminating & Foiling

Finishing



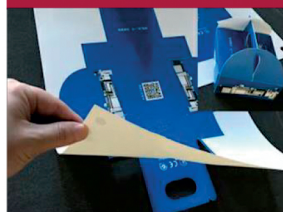
Cards



Labels



Packaging



Signage



DTF Transfer Sheets



Eclipse X 1007 Specifications

Material	Paper, foam board, corrugated, card stock, etc.
Effective work area	27 x 39 inch (707 x 1000mm)
Maximum cutting speed	1200mm/s (47.24 inch/s)
Effective cutting thickness	16mm
Material capacity	Up to 15.5 inch or 573 lbs (400mm or 260 kg)
Cutting accuracy	0.1mm (.004 inch)
Data format	DXF, PLT, PDF, HPG, HPGL, TSK, BRG, XML, CUT, OXF, ISO, AI, PS, EPS
Tools mountable	Up to 5 tools on 5 head units
Display	Integrated Touch Interface
Media hold	Vacuum / Conveyor
Voltage	Single phase 220v 30amps
Vacuum pump	2 pumps with 2 vacuum zones
Work surface	Felt mat

Warehouse in Dallas, TX • Logan Township, NJ • Los Angeles, CA
469-758-2288 • 8101 Tristar Dr Suite: 110, Irving, TX 75063 • www.cutworxusa.com • sales@cutworxusa.com

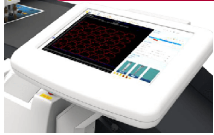
Digital Die Cutter for 35 inch x 47 inch sheets



Integrated Touch Interface

Roll Feed Attachment

Universal Cutting Tool



Cost effective Digital Cutting System

The Eclipse X Series 3547 Digital Die Cutter is a versatile sheet-fed flatbed cutting system requiring no dies designed for the printing, packaging, and sign industries. It is a cost-effective solution for custom shape contour cutting, perfect for sample making, prototyping, packaging, tags, cards, pocket folders on corrugated board, foam, pvc, adhesive sheets, cardstock and other materials. Process materials up to 10mm in thickness and up to B1 size (35"x47") sheet size on a continuous feed and cut platform. Use the roll feed attachment for 30" wide roll material processing.

No Cutting Dies

The Eclipse 3547 is integrated with 5 tool positions capable of being used on a single sheet. Process materials with the Universal Cutting Tool, Electric Oscillating Tool, Drag Knife, Kiss-Cut Tool, or Creasing Wheel. Options available for perforation and V-Cut Tools.

Automatic Feeding System

The Eclipse 3547 is designed continuous feed and cut production of short- to long-run processing with the fully automated feed system and conveyor. Eliminating the need for a dedicated operator, the Eclipse uses a high-definition CCD Camera to position materials by reading registration marks for precise cutting. The Eclipse 3547 is also capable of feeding, registering, and processing two 13"x19" sheets for faster production on digital materials.

Software

Eclipse Software Suite features Design Manager and Cut Software designed for file preparation of PDF, PLT, DXF, HP/GL and is compatible with Kasemake, Artios, CAD, Adobe Illustrator, Box Magician and much more. The Eclipse is capable of working with most RIP programs for quick workflow management such as Onyx, Caldera, or Fiery. QR/Barcode management system is available.

Stacker

Designed for continuous feeding of material stack up to 15.5" tall or 600lbs.

Features

- ▶ Up to 5 tools on a single sheet.
- ▶ Process two 13"x19" sheets at a time with dual feeding.
- ▶ Universal Cutting Tool for 10mm thick materials.
- ▶ Automatic feeding system for continuous operation.
- ▶ Optional QR code management system.
- ▶ Integrated roll feed attachment for roll to sheet processing.

Combine the Eclipse 3547 with the Matrix Laminator foil fusion machine to create high end cards, brochures and packaging with foil or soft touch lamination.



ECLIPSE 3547

Digital Die Cutting System

WORKFLOW



Digital printing prototyping & short-run production

Laminating & Foiling

Finishing



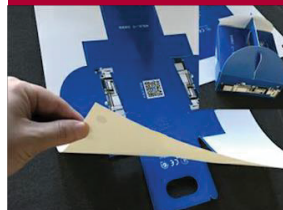
Cards



Labels



Packaging



Packaging



Packaging



Eclipse 3547 Specifications

Material	Paper, foam board, corrugated, card stock, etc.
Effective work area	35 x 47 inch (900 x 1200 mm)
Maximum cutting speed	1000mm/s (39 inch/s)
Effective cutting thickness	10mm
Material capacity	Up to 15.5 inch or 600 lbs (400mm or 300 kg)
Cutting accuracy	0.1mm (.004 inch)
Data format	PDF, PLT, DXF, HP/GL
Tools mountable	Up to 5 tools on 5 head units
Display	Integrated Touch Interface
Media hold	Vacuum / Conveyor
Voltage	Single phase 220v 30amps
Vacuum pump power	4kw
Work surface	Felt mat

Warehouse in Dallas, TX • Logan Township, NJ • Los Angeles, CA

469-758-2288 • 8101 Tristar Dr Suite: 110, Irving, TX 75063 • www.cutworxusa.com • sales@cutworxusa.com