

83888

# PLANTER STAR CLOSING WHEEL INSERT



## CAUTION

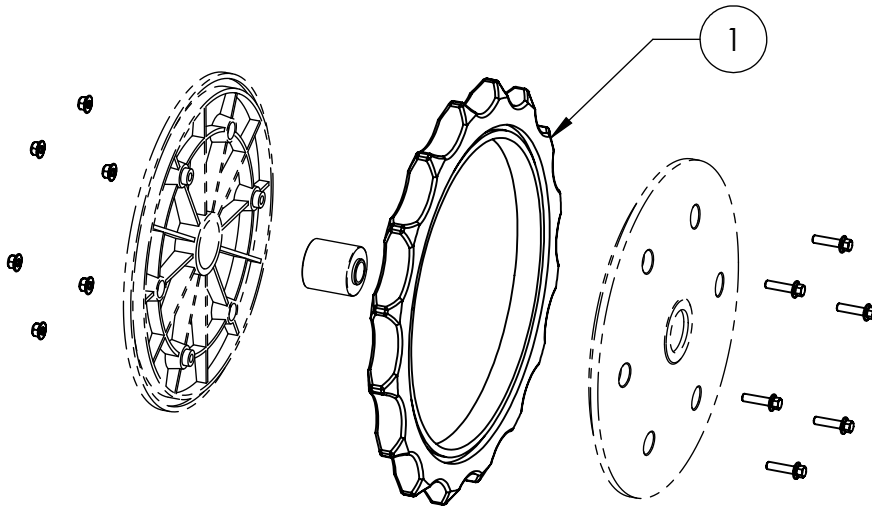
PLEASE REFER TO YOUR EQUIPMENT MANUFACTURER'S OPERATORS MANUAL FOR PERTINENT SAFETY PRECAUTIONS



## IMPORTANT

Read all instructions before starting installation

- INSTALL AT TEMPERATURE OF 70 OR ABOVE. COLD WHEELS CONTRACT, CAUSING POTENTIAL FIT ISSUES.
1. REMOVE THE CLOSING WHEELS FROM THE PLANTER
  2. REMOVE ALL BOLTS FROM THE HUB OF THE OEM RUBBER TIRE
  3. SPLIT THE HUBS BY INSERTING A BOLT THROUGH THE BEARING AND TAPPING ON THE HEAD OF THE BOLT WITH A HAMMER. DO NOT PRY THE HUBS APART AS IT MAY CAUSE DAMAGE TO THE HUBS.
  4. REMOVE THE RUBBER TIRE AND DISCARD
  5. INSTALL POLY RING ON THE HUB WITH THE BEARING.
  6. INSTALL OTHER HUB HALF ONTO THE POLY RING AND ALIGN BOLT HOLES. USE A RUBBER Mallet TO TAP THE HUBS BACK TOGETHER.
  7. RE-INSTALL THE HUB BOLTS AND TIGHTEN.
  8. CLOSING WHEELS ARE NOW READY TO BE INSTALLED BACK ON THE PLANTER.



ITEM NO.	PART NUMBER	DESCRIPTION	QTY.
2	00234	WASHER, 5/8" FLAT SAE	6
1	23035	CLOSING WHEEL INSERT, STAR	2



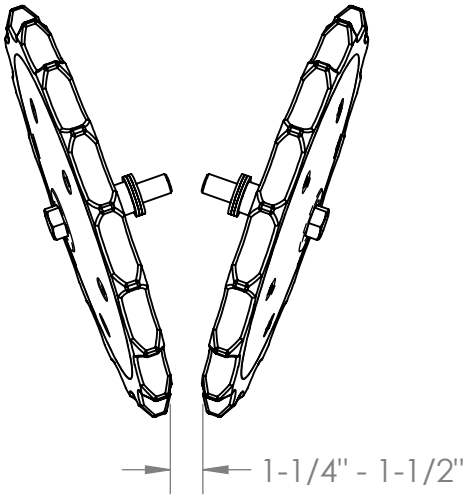
120 Eastgate Drive SE  
Hutchinson, MN 55350

1-800-788-6483  
1-320-587-2322  
1-320-587-6112 (Fax)

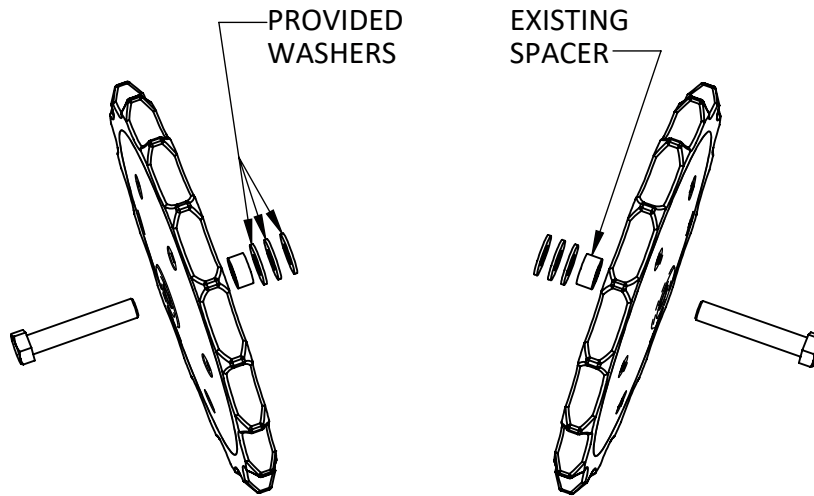
[WWW.MAYWES.COM](http://WWW.MAYWES.COM)

83888

# PLANTER STAR CLOSING WHEEL INSERT



SPACE WHEELS AT APPROXIMATELY 1-1/4", GAP MAY NEED TO BE ADJUSTED BASED ON PLANTING CONDITIONS. THE NUMBER OF SPACERS USED WILL VARY DEPENDING ON THE PLANTERS TAIL UNIT. IN SOME CASES, ADDITIONAL SPACERS MAY BE NEEDED OR NOT ALL OF THE PROVIDED WASHERS WILL BE USED. PLANTING CONDITIONS VARY, SO IT WILL BE NECESSARY TO CHECK FOR SEED TO SOIL CONTACT & THE CONDITION OF THE SEED FURROW.



120 Eastgate Drive SE  
Hutchinson, MN 55350

1-800-788-6483  
1-320-587-2322  
1-320-587-6112 (Fax)

[WWW.MAYWES.COM](http://WWW.MAYWES.COM)