

American Changer®



AC2006, AC2007, AC2207 & AC6007 Installation, Operation and Service Manual



Changing the IndustrySM

! WARNING

Improper installation, adjustment, alteration, service, maintenance, or use of this machine can result in death, injury or property damage.

Installers & Service Technicians

Read and understand the instructions detailed in this manual.

Owners & Operators

Keep this manual in a safe place to provide to any service technicians working on this machine.

American Changer Corp.

1400 N.W. 65th Place, Ft. Lauderdale, FL 33309

Tel (954) 917-3009 • Fax (954) 917-3079

www.americanchanger.com www.hoffmanmint.com

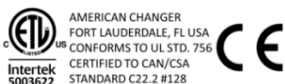


Table of Contents

Section 1 – Product Overview

1.1 – Machine Specifications.....	3
1.2 – Warranty Information.....	3
1.3 – Machine Safety.....	4

Section 2 – Setup & Installation

2.1 – Setup.....	6
2.2 – Mounting Instructions.....	7
2.3 – ADA Regulations.....	9

Section 3 – Operational Overview

3.1 – Standard Component Description.....	10
3.1.1 – Coin Hopper.....	10
3.1.2 – ACC Coin Hopper.....	11
3.1.3 – Bill Validator.....	11
3.1.4 – Pyramid Acceptors Apex Model.....	12
3.1.5 – Crane Payment Innovations (CPI) AE 2600 Series.....	13
3.1.6 – Flex-2 Main Logic Board.....	15
3.1.7 – I/O Board and External LCD Display.....	16
3.1.8 – 12 Key Keypad.....	16
3.1.9 – VPOS Touch.....	17
3.1.10 – Printer.....	19
3.2 – Optional Component Description.....	21
3.2.1 – Remote Access Board.....	21
3.2 – Functional Description.....	22
3.3 – Out-of-Service Conditions & Error Codes.....	22
3.4 – Programming Menu Flex-2 Board.....	25
3.5 – Remote Loading Software to the Flex-2 Board.....	29
3.6 – Webserver.....	30

Section 4 – Maintenance

4.1 – Coin Hopper Maintenance..... 36
4.1.2 – ACC Coin Hopper Maintenance..... 37
4.2 – Bill Validator Maintenance..... 39
4.2.2 – Crane Payment Innovations (CPI) AE 2600 Series Maintenance..... 40
4.2.3 – Talos CPI Maintenance..... 41
4.2.4 – Astro Systems GBA ST1-C Maintenance..... 45
4.3 – Parts List..... 47
4.4 – Warranty Terms and Conditions..... 51

©2022 American Changer Corp.

All rights reserved. No part of this work covered by copyrights herein may be reproduced or copied in any form or by means – graphic, electronic or mechanical, including photocopying, recording, taping or information storage and retrieval systems – without the written permission of American Changer Corp.

Section 1 – Product Overview

1.1 – Machine Specifications

Operating Voltage (selectable by switch on power supply)	Set at 115VAC: 90 ~ 132VAC 4.0A Set at 230VAC: 180 ~ 264VAC 6.0A
Power Consumption	10 Watts
Operating Temperature	41°F to 104°F / 5°C to 40°C
Interface to Coin Hopper	24VDC, 2.5 amps max

***Note:** Specifications stated herein may vary without notice. Capacities are approximations and may vary.

1.2 – Warranty Information

PLEASE REFERENCE SECTION 4.4 ON PAGES 47 AND 48 FOR AMERICAN CHANGER’S DETAILED LIMITED WARRANTY AND EXCLUSIVE REMEDIES. SOME HIGHLIGHTS FROM SAID SECTION ARE:

Coin Hopper(s), Coin Acceptors and Logic Board

These items are warranted for one year from date of purchase.

Bill Validators

These are warranted for two years from the date of purchase.

COVERED

- Manufacturers’ defects in workmanship or materials

NOT COVERED

- Damage caused by shipping or physical abuse
- Misapplication
- Vandalism
- End users’ attempt, on their own, to repair components
- Cleaning and maintenance
- Power surges and lightning strikes

A Return Material Authorization number (RMA #) must be obtained from American Changer Corporation before returning a unit for repair; warranty or otherwise. A copy of invoices must accompany any and all warranty work.

Section 1.3 – Machine Safety

Your safety and the safety of others are very important to American Changer.

We have provided important safety messages in this manual and on your machine. Always read and obey all safety messages.



This is a safety alert symbol.

This symbol alerts you to potential hazards that can kill or hurt you and others. All safety messages will follow the safety alert symbol and either “DANGER”, “WARNING”, “CAUTION” or “NOTICE”.

These words mean:



You can be killed or seriously injured if you don't immediately follow instructions



You can be killed or seriously injured if you don't follow instructions



You can be injured if you don't follow instructions



Ensure this machine is level when installed. Failure to follow these instructions may result in product damage.

All safety messages will tell you what the potential hazard is, tell you how reduce the risk of injury, and tell you what can happen if the instructions are not followed.

Distributors, retailers, operators, and/or service people are to ensure the following warning label is properly affixed on the ACC products to which you/they are using and/or servicing in order to help meet the applicable Proposition 65 requirements. For more information go to www.P65Warnings.ca.gov



WARNING: Cancer and Reproductive Harm
www.P65Warnings.ca.gov

Important Safety Instructions

DANGER: To reduce the risks of severe injury secure the machine to a stable structure.



Severe Injury Hazard

This machine is to be secured to a stable structure.
 Equipment will fall if not properly secured to a stable structure.
 Failure to follow these instructions may result in death, injury, product damage, or property damage.

WARNING: To reduce the risk of electrical shock, disconnect all electrical power to the machine before servicing.



Electric Shock Hazard

Disconnect all electrical power to the machine before servicing.
 Electric shock will occur while servicing the machine with electrical power applied to it.
 Failure to follow these instructions may result in death, injury, product damage, or property damage.

NOTICE: For indoor use only.



For indoor use only.

Solo para usos en el interior.

Pour une utilisation en intérieur uniquement.



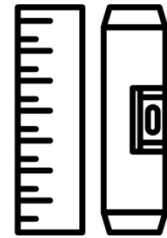
NOTICE: Ensure this machine is level when installed



Ensure this machine is level when installed.

Asegurarse que está máquina esté nivelada cuando haya sido instalada.

S'assurer que la machine soit de niveau lorsqu'installée.



SAVE THESE INSTRUCTIONS

American Changer does not guarantee machines (products) or services to be 100% secure against criminal attempts. All machines (products) and services are to be used in accordance with business best practices and the owner's or operator's best judgement.

Installation, use, service and maintenance must be performed in accordance with applicable machine (product) manuals provided by American Changer and comply with any and all pertinent laws or regulations.

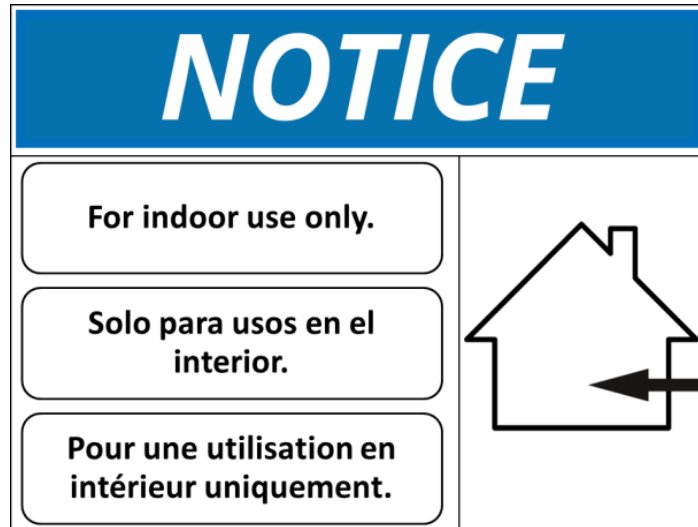
Inspect your machine (product), at a minimum annually, by a qualified service technician.

Dimensions and weights are reasonably close estimates. Specifications in this manual can vary without notice.

Section 2 – Setup & Installation

2.1 – Setup

NOTICE: THIS MODEL MACHINE IS FOR INDOOR USE ONLY.



Inspect for any connectors or components that may have been dislodged during shipping. The lock and keys for your changer will be inside the manila envelope along with this manual and other pertinent information. To install the lock, insert the cylinder into the hole in the middle of the T-handle and push until it stops. Turn the key until you hear it "snap." Turn the key counterclockwise ¼ turn and remove the keys.

NOTE: The only way to get a duplicate set of keys made is to save the tag that comes with the keys. The ID # begins with "AC" or "ACC" followed by digits." If you purchased Medeco locks with your machine the ID will begin with "7RA" followed by digits."

CHECKING SHIPMENT: Be sure to check the shipment against the Bill of Lading for shortages. Also, check for external damage to the packaging. Note any shortages and/or damage to the packaging on the Bill of Lading in the presence of the carrier and ask the carrier to initial on the Bill of Lading accordingly. Immediately report any shortages or damage to the packaging to the carrier and American Changer.

TEST: Before permanently installing the changer, do a functional test to verify that there is no shipping damage to your new changer.

Plug the power cord into a ***dedicated, grounded 120VAC outlet***. The machine is preset to accept \$1, \$5, \$10, and \$20 and dispense 25¢ coins (unless otherwise specified at the time of purchase).

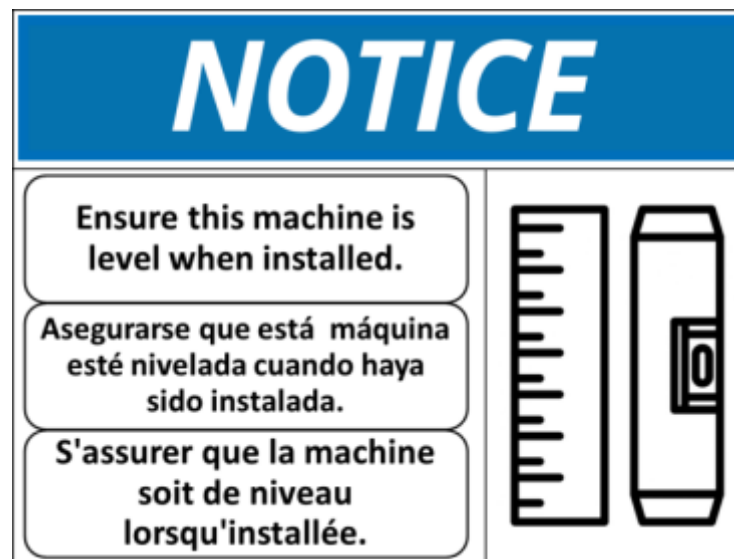
Fill each of the coin hoppers with a minimum of 100 coins. On the Main Logic Board, turn the switch on the bottom right corner "ON." The rocker switch has an "I" and "O" printed on it. When the "I" is pressed down, the changer is "ON."

If the machine does not function properly please contact American Changer's Technical Support Department at service@americanchanger.com or 1-888-741-9840.

2.2 – Mounting Instructions

This machine must be installed in accordance with local codes. If you are unsure in any way what your local codes are or unsure of anything in the following steps, please hire a licensed professional to mount your machine.

1. Disconnect any and all AC power going to the machine. (Unplug AC line cord from the rear of the machine.)
2. Note: You will need to verify with the building code enforcement to see if it is allowable to plug the changer into a grounded outlet. If it is not, there must be 120VAC run through conduit or other means to meet local codes to the changer. If it is not required, proceed to step #6.
3. Have a licensed electrician run the conduit, install the new breaker, wire and help decide how the wiring will enter the changer (from the back or the bottom).
4. After the conduit has been installed, proceed with securing the machine to a stable structure.
5. Find an appropriate stable structure which to secure the machine to.
6. **NOTICE: BEFORE SECURING ENSURE THE MACHINE IS LEVEL.**



7. **⚠ DANGER**; PROPERLY SECURE MACHINE (PRODUCT) TO THE FLOOR SO THE MACHINE (PRODUCT) CANNOT BE MOVED OR TIPPED. USE STRUCTURAL SOUND FASTENERS THAT CAN BE PROPERLY TIGHTENED AND SECURE THE MACHINE (PRODUCT) THROUGH EACH OF THE HOLES IN THE BASE OF THE MACHINE (PRODUCT) TO THE APPLICABLE SURFACE TO WHICH IT IS BEING SECURED.



8. Use the four holes located in the back, bottom, or sides of the cabinet to secure the machine to a stable structure.
9. Verify that the machine is properly secured to the stable structure.
10. Connect your AC line to the outlet. If conduit was run wire it to the power supply located in the machine.
- Do not use an extension cord unless allowed by the building electrical code.**
 - Installation is completed. Proceed to the “Programming the Changer” section.

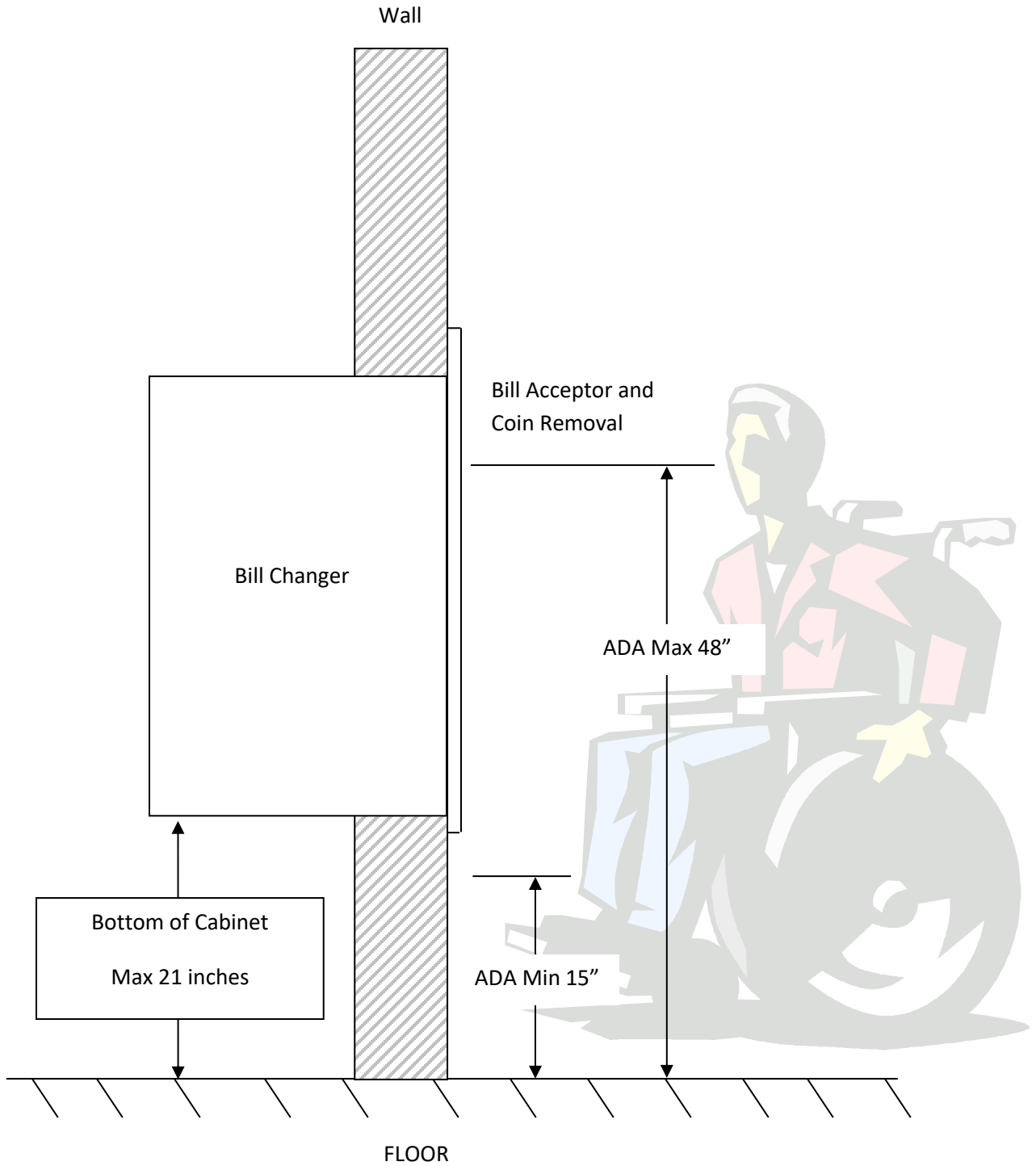
The proper performance of your American Changer machine is directly related to the quality of the power it is supplied. AC power fluctuations, including blackouts, brownouts, over voltages, sags, surges, and spikes may cause the machine to miss pay. To ensure the most trouble-free operation, we strongly recommend plugging all of our machines into a DEDICATED AC outlet (this means there are no other machines on location plugged into the same AC line). A simple way to check if this is true is to turn off the breaker associated with our machine at the breaker box. No other equipment on location should lose power.

Additionally, if your unit is located in an area prone to lightning storms or other sources of frequent power disturbances, we also strongly recommend using an Uninterruptible Power Supply (UPS). If power is lost during a payout to a customer, a UPS will allow your machines to complete the transaction that would otherwise not be completed. In some cases, a UPS may also correct long-term under and/or over voltages on the AC line by converting to the proper line voltage before the power reaches the machine.

Every American Changer machine has a surge suppressor built into the main logic board. This helps eliminate power related noise problems, but it will not protect from substantial voltage spikes or nearby lightning strikes. If this is a concern for your area, we recommend purchasing a commercial grade UPS with integrated surge protection. **NOTE: A POWER STRIP IS NOT A SURGE PROTECTOR.**

2.3 – ADA Regulations

The American Disabilities Act requires unobstructed access to equipment. Bill insertion and coin removal are to be no lower than 15 inches and no higher than 48 inches from the floor. This requirement must be met whether a changer is installed on a base, on a table, or in the wall. NOTE: This drawing is not to scale.



Section 3 – Operational Overview

3.1 – Standard Component Description

3.1.1 Coin Hopper

The hopper uses the ccTalk communication protocol. It can dispense coins or tokens ranging in size from 21mm to 30mm in diameter and 1.25mm to 3.30mm in thickness. An option is available to dispense smaller coins. The pay-out rate is approximately 4 coins per second.

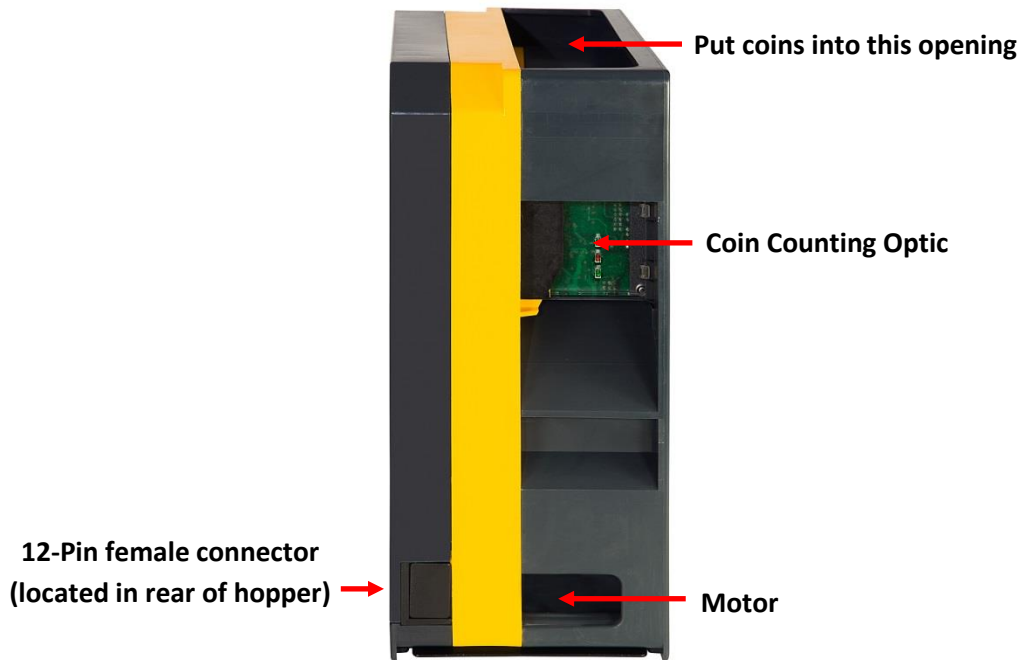


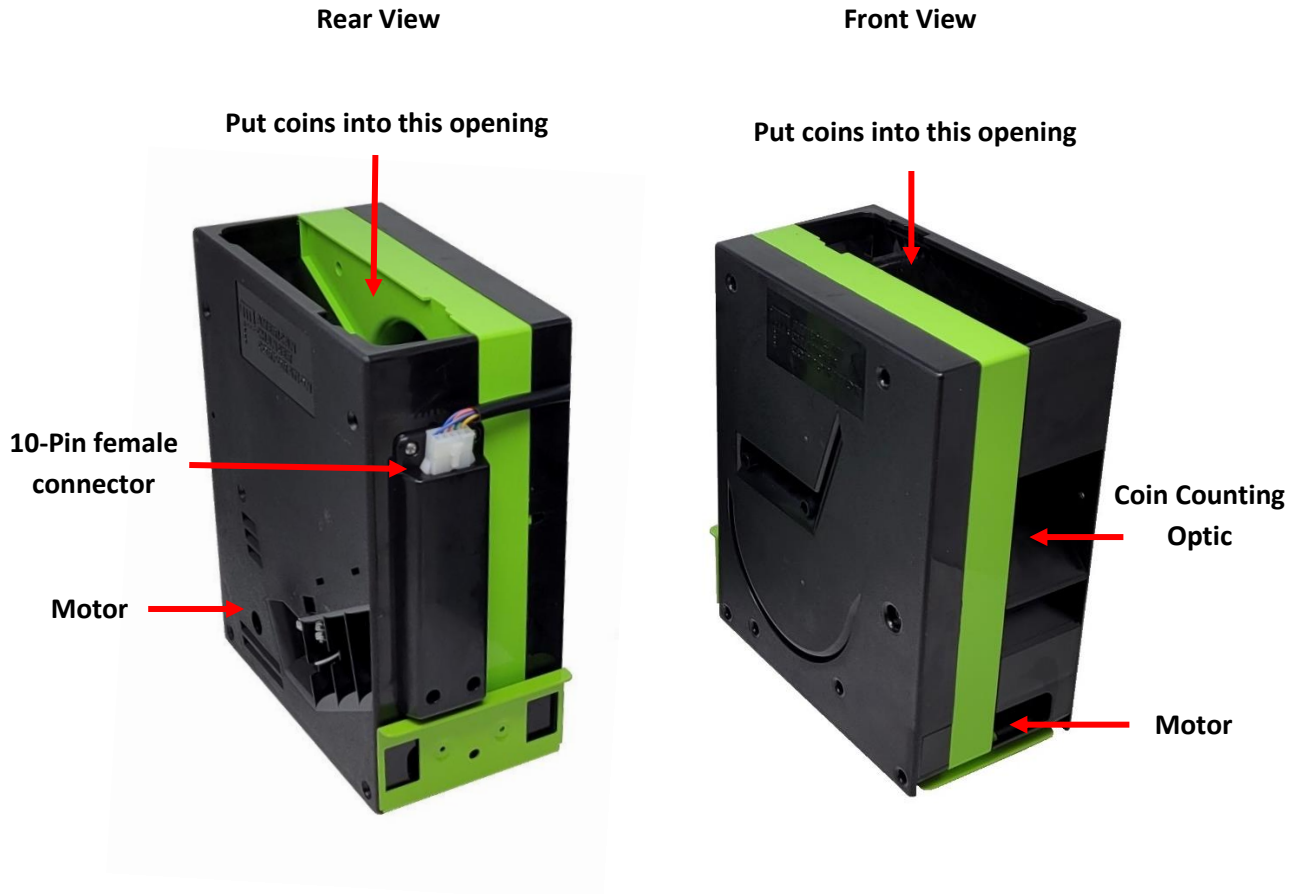
Figure 1

Electrical Interface	
Voltage: Nominal	24 VDC
Minimum	18 VDC
Maximum	26 VDC
Current (typical):	
Idle	40 mA
Empty	0.2 A
Full	0.7 A
Surge	2.5 A

Environmental Conditions	
Operating Temperature	0° to 60°C or 32° to 140°F
Storage Temperature	-20° to 60°C or -4° to 140°F

3.1.2 ACC Coin Hopper

The hopper uses the ccTalk communication protocol. It can dispense coins or tokens ranging in size from 21mm to 30mm in diameter and 1.25mm to 3.30mm in thickness. An option is available to dispense smaller coins.



3.1.3 Bill Validator

This model machine may have been sold without a bill validator. It is intended to work with a 24VDC bill validator using the MDB protocol.

6-Pin (MDB) Connector Pinout:

- Pin #1 - +24VDC Power
- Pin #2 - DC Power return
- Pin #3 - Not Used
- Pin #4 - Master Receive
- Pin #5 - Master Transmit
- Pin #6 - Communications Common

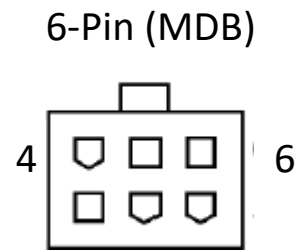
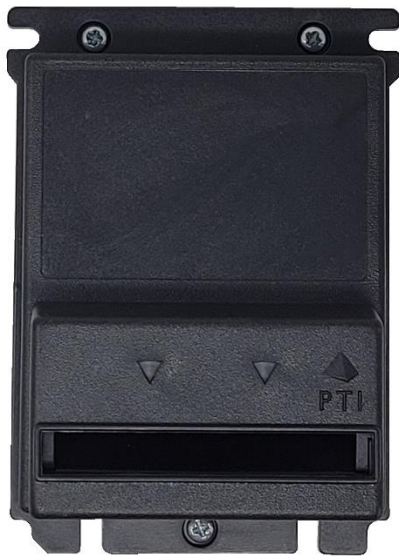


Figure 2

3.1.4 Pyramid Acceptors Apex Model



Depending on model machine, there are three types of bezel we carry.



Standard "0" Bezel



VFM Bezel

3.1.5 Crane Payment Innovations (CPI) AE 2600 Series



Depending on model machine, there are three types of bezel we carry.



Compact Bezel



VFM Bezel

CPI T702-U5MUS Talos



Depending on model machine, there are three types of bezel we carry.

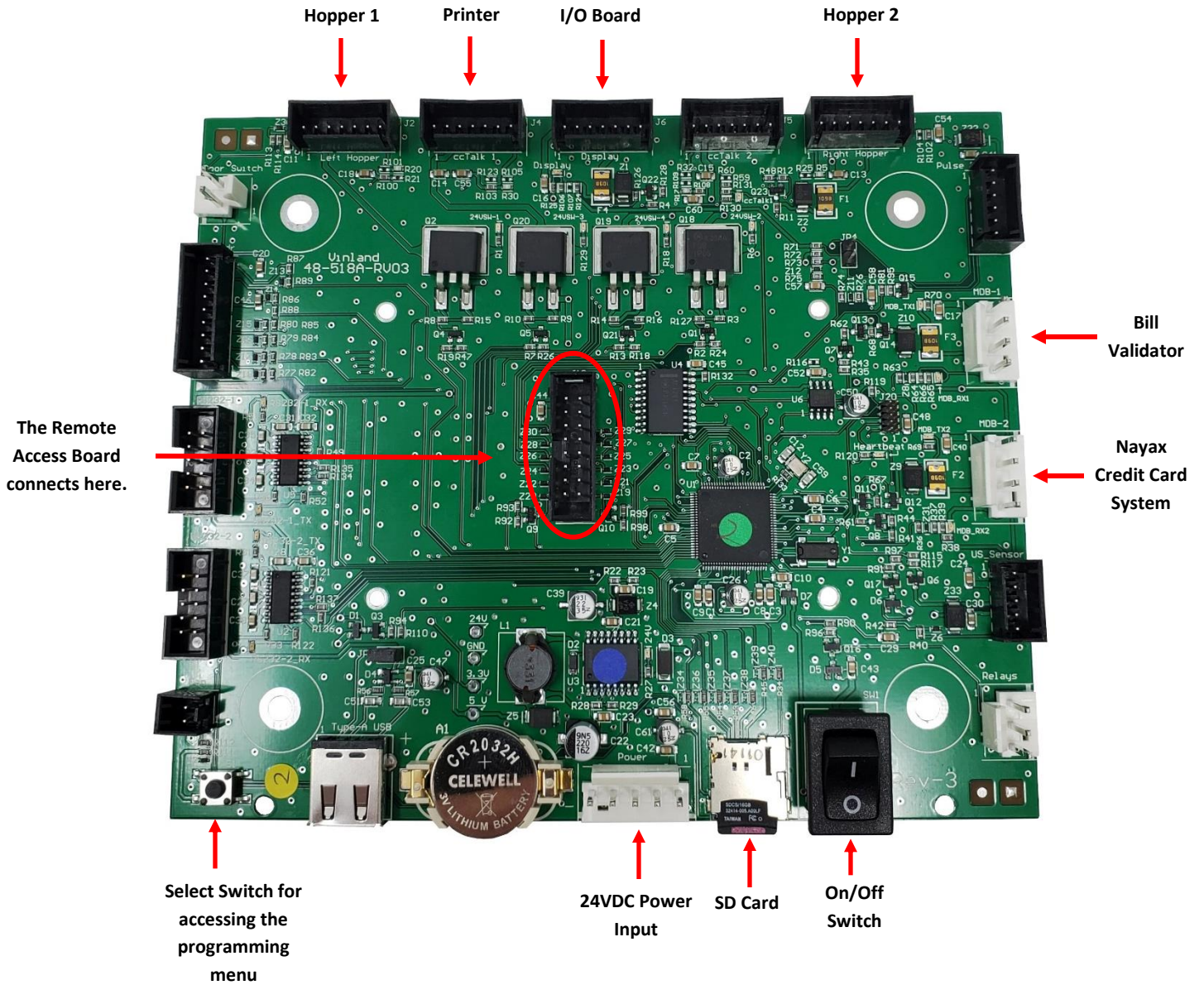


Compact Bezel

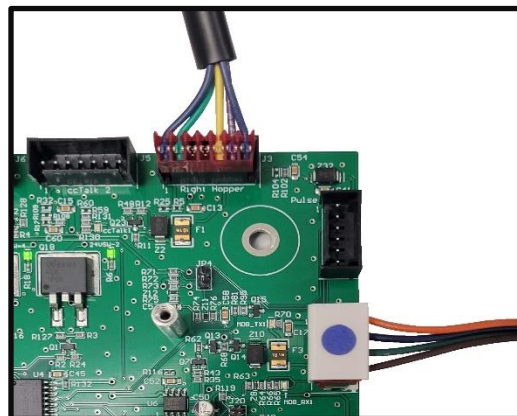


VFM Bezel

3.1.6 Flex-2 Main Logic Board

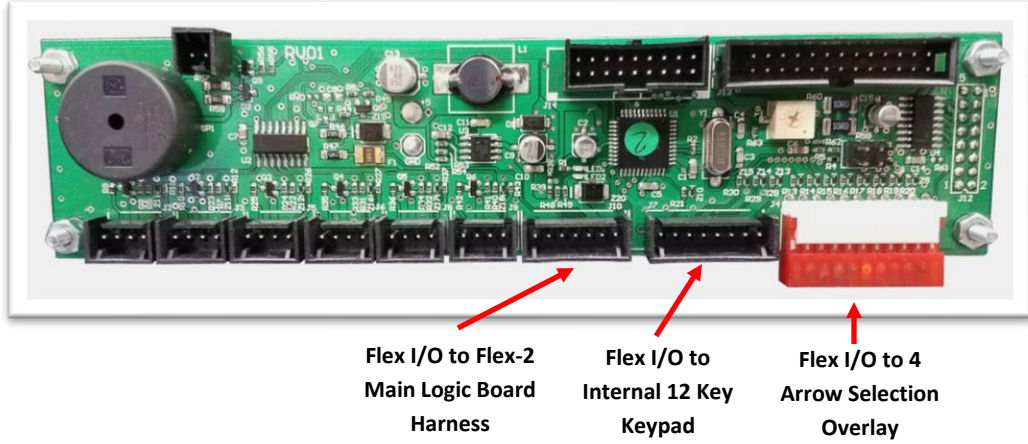


NOTE: The Harness connector wires face outward when connected to the board. See picture below.



3.1.7 I/O Board and External LCD Display

The I/O board allows the main board to interface with the LCD display and displays the packages to the customer. The LCD display is located behind the I/O board pictured below.



3.1.8 12 Key Keypad

This model machines uses a 12-key keypad for entering information into the programming menu. It is mounted on the front of the machine.

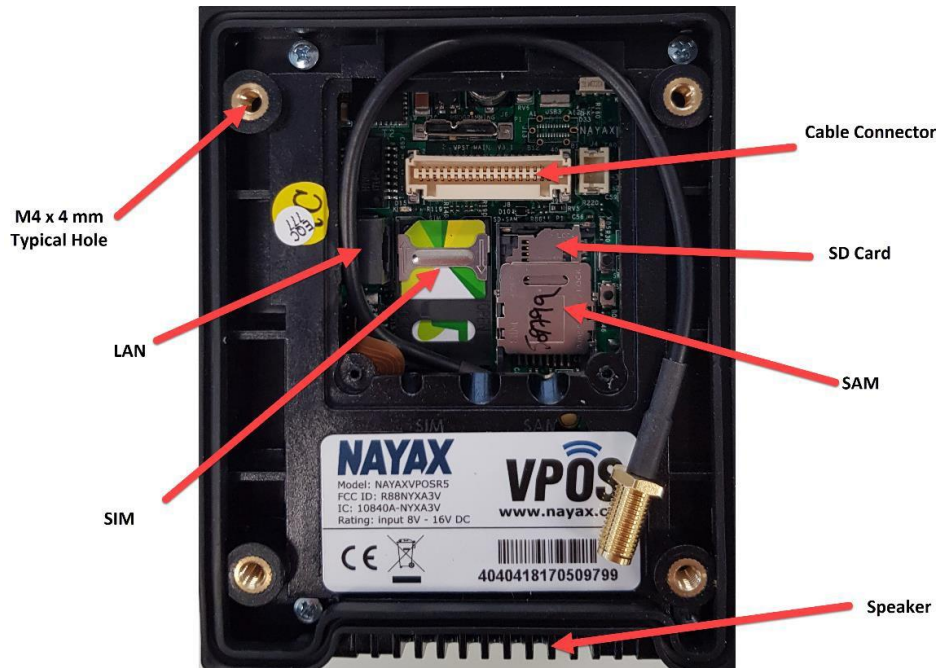


3.1.9 VPOS Touch

Front View



Back side



Sim Card must be installed with Gold Chip facing the inside of the device with cut corner facing up.

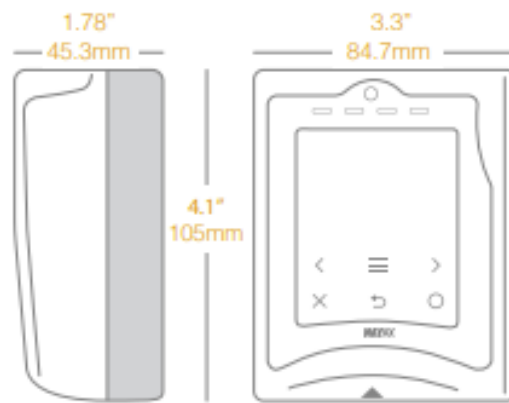
Environment Guidelines

- Do not use in locations when you have a risk of burnout or direct, intense sunlight.
- Do not expose the product to corrosive gas/liquids of any type.
- Deploy in non-condensing conditions.

VPOS Touch Additional features:

- The VPOS Touch has no battery and receives power via its connection to the machine.
- Strong shock or vibrations to the device may cause failure.

Dimensions



Installation Environment		Physical Dimensions	
Operating Temperature	-20° to 55°C or -4° to 131°F	Height	105 mm / 4.1 in
Storage Temperature	-30° to 85°C or -22° to 181°F	Width	84.7 mm / 3.3 in
Humidity	25% to 95% (non-condensing)	Depth	45.3 mm / 1.78 in
		Weight	230 g / 8.1 oz

3.1.10 Printer

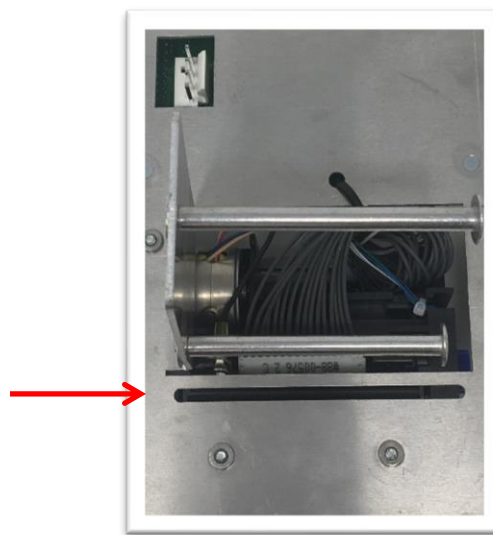
This machine comes standard with an audit/receipt printer.



Replacing the Printer Paper

Before the printer paper runs out, you might wish to contact your distributor and order more printer thermal paper. The American Changer part number is **AC7071-01**, and it is a special brand which is hard to find. Many owners of this product make the mistake of purchasing the incorrect paper type or have a problem loading the paper. Please follow the steps of either Method #1 or Method #2 below to properly load your thermal printer with new paper.

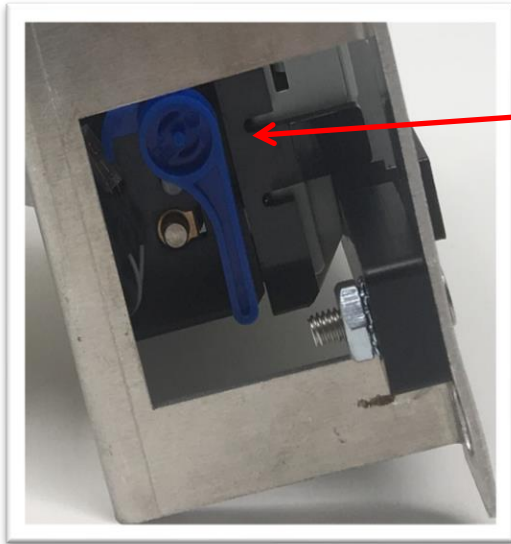
Opening in rear of
printer. Paper is
loaded through this
opening



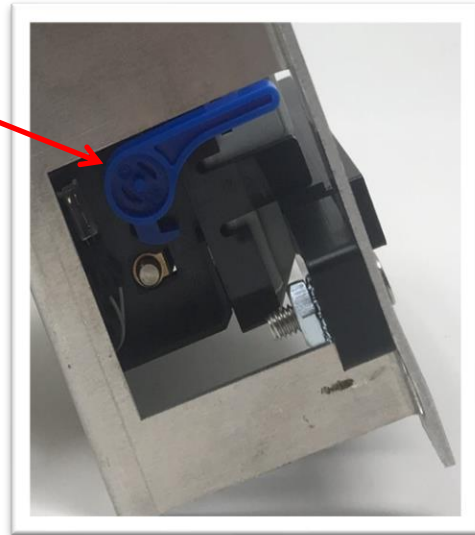
Method #1 – Automatic Feed:

NOTE: This method must be performed with the board power ON.

1. If there is paper remaining on the previous roll, it must be removed before proceeding. Move the “Paper Feed Lever” from the DOWN to the UP position (refer to Figure P2), and then pull out the remaining paper from the rear of the printer and discard the roll.

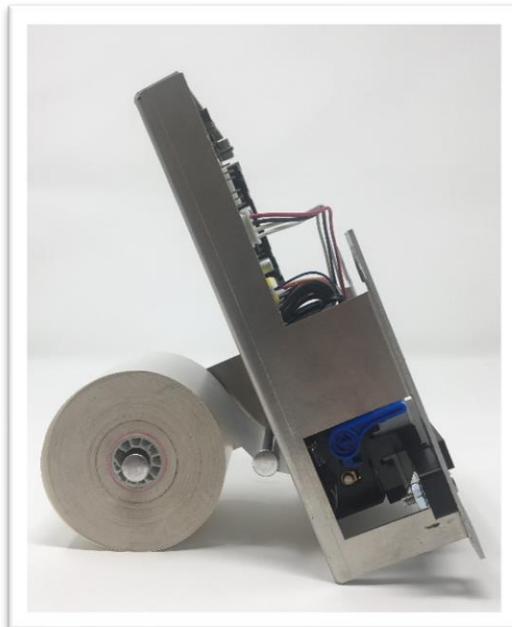


Paper Feed Lever in the down position



Paper Feed Lever in the up position

2. Move the “Paper Feed Lever” back to the DOWN position. Slide a new roll of paper onto the “Roll Holder,” oriented so the paper comes off on the side toward the printer (refer to Figure P3 for the correct placement).



3. Wrap the paper under the “Paper Guide” and begin to feed it into the “Paper Slot.” You do not need to fold or cut the paper in any way; it should be left square in the front. At a certain point as the paper is being fed in, the printer will detect it and automatically feed it to the printing position. When done, the setup should look like Figure P3.

1. **IMPORTANT!** Turn OFF the Main Board power, and turn it ON again after a few seconds. *Note: The printer will not work until the power has been cycled!*
2. Enter the Setup Mode and perform a Printer Test. Make sure the printer prints all of the lines of text and cuts off the paper.

Method #2 – Manual Feed:

NOTE: This method can be performed with the board powered ON or OFF.

1. If there is paper remaining on the previous roll, it must be removed before proceeding. Move the “Paper Feed Lever” from the DOWN to the UP position (refer to Figure P2), and then pull out the remaining paper from the rear of the printer and discard the roll.
2. With the “Paper Feed Lever” still in the UP position, slide a new roll of paper onto the “Roll Holder,” oriented so the paper comes off on the side toward the printer (refer to Figure P3 for the correct placement).
3. Wrap the paper under the “Paper Guide,” and begin to feed it into the “Paper Slot.” You do not need to fold or cut the paper in any way; it should be left square in the front. Continue to feed the paper into the slot, through the print head, until it passes out through the front of the machine (refer to Figure P4).
4. Move the “Paper Feed Lever” back to the DOWN position. The printer is now ready to print.
5. Enter the Setup Mode and perform a Printer Test. Make sure the printer prints all of the lines of text and cuts off the paper.

3.2 Optional Component Description

3.2.1 Remote Access Board



3.3 – Functional Description

1. **Dispense** The coin hopper content can be defined by entering its value in the programming menu, for example, \$00.25.

2. **Payment** The desired payout and cost must be selected by one of the four buttons. Once selected, the payment type needs to be selected. Value can be up to \$999.99. There are several ways to pay:
 - Cash Using either a bill validator and/or a coin acceptor. Deposits are accumulated until the selected cost is reached and then the item(s) are dispensed. If overpaid, change is given if applicable. A partial payment can be cancelled, and change is returned if applicable.

 - Tokens Insert a token as a form of payment to receive a preset quantity of tokens. This is commonly referred to as “Party Tokens”.

 - Credit Card A normal insert, swipe, or contactless transaction is performed. Accepts Visa, MasterCard, American Express and Discover cards based on merchants account configuration.

3.4 – Out-of-Service Conditions & Error Codes

System Failures

Below are conditions that will cause the machine to go into an “Out-of-Service” mode.

Coin Hopper

Coin Hopper Error Conditions

If the hopper fails and a second hopper is not present, the machine will go out of service. If both hoppers have the same valued coins, the payout will be completed from the still operational hopper. Status of the hoppers can be seen in the System Info menu.

- Optos Indicates the coin counting optic is blocked. The exit path may be obstructed, or the Optic Board may be bad.

- No Comm. The Flex-2 Board is unable to communicate with the coin hopper. The hopper may be disconnected, have a damaged harness, or may need to be repaired or replaced.

- High Current The hopper motor exceeded its maximum threshold for current. Inspect for a jammed coin preventing the coin

belt from moving, or a stalled or shorted motor. Repair or replace the hopper.

Low The amount of coins in the coin hopper is below its operational threshold. First ensure there are enough coins in the coin hopper to completely cover the metal plates located at the bottom of the hopper. Second use Scotch-Brite to scrub the metal plates. This is effective on dull plates. Repair or replace the hopper.

Timed Out The coin hopper did not complete a payout in its allotted time frame. Check the hopper for any coin jams or mechanical obstructions preventing coins from exiting. Have the unit repaired or replaced.

Bill Validator

Bill Validator Error Conditions

If the validator fails, the display will show a **Credit Card Only** message. The status of the validator can be seen in the System Info menu.

Motor Validator stacker/transport motor has failed. Repair or replace the bill validator.

Sensor Sensor failure. Check for dirty sensors. Repair or replace the validator.

Checksum Indicates error with the firmware file stored on validator main board. Repair or replace the bill validator.

Jammed A bill or debris is jammed in the validator bill path. Check bill path for a jammed bill or debris. Repair or replace the bill validator.

Cashbox The cashbox is not installed on the bill validator. Ensure the bill box is properly installed on the bill validator. Repair or replace the bill validator.

No Comm. The Flex-2 Board is unable to communicate with the bill validator. Ensure the validator harness is connected securely. Repair or replace the bill validator.

Out of Service The Flex-2 Board has tried to enable the validator several times without success.

Credit Card

Credit Card Processing Device Error Conditions

If the credit card processing device fails, the display will show a **Cash Only** message. The status of the credit card processing device can be seen in the System Info menu.

- No Comm The Flex-2 Board is unable to communicate with the credit card processing device.
- No Reader A credit card reader is not detected. The credit card reader may be disconnected or defective. This error only occurs when using a DataCap Systems Tran device.

**Printer
In/Out**

Printer Error Conditions

- Error An error occurred while printing
- Head Up Printer head is not in its locked position
- RAM Fail A RAM failure occurred
- Out of Paper Paper is not present in the printer
- CRC Failure A CRC failure occurred
- Cutter Fail Cutting blade is unable to reset to home position.
- No Comm. This means the Flex-2 main logic board is unable to communicate with the printer
- High Temp The thermal head temperature is above its operational range.

3.4 – Programming Menu

To enter the programming menu, begin by pressing the “Select Switch” on the Flex-2 main logic board.

Pressing the select switch will bring the display to show “Enter Access Code.”

Use the Flex Programmer Board to enter the access code. The default code from the factory is “1234”

To exit the programming menu or the “Enter Access Code” screens press the “Select Switch”

Use the Flex Programmer Board to navigate the menus. Press the “Cancel” button and enter a menu number to be brought immediately to that menu or press the **Back/Next** button to step through the menus.

All the menus work the same:

No/Yes: Selects status

Back/Next: Selects the item

Exit: Exits the setup menu

NOTE: ALL MENUS MAY NOT APPLY TO YOUR SPECIFIC MODEL MACHINE. UNUSED MENUS WILL BE IDENTIFIED BY AN ASTERISK *.

Menu 01 – Print Help Menu

A list of the menus and their corresponding numbers is printed by the external printer.

Menu 02 – System Info

The payout information and configuration settings are printed by the external printer. Aside from those, the following information is also included in the System Info printout:

Software Revision
Valid1 Status
Valid2 Status
Hopper #1 Status
Hopper #2 Status
Hopper #3 Status
Hopper #4 Status
Credit Status
Printer Status
Coin Acceptor
Bill Dispenser
Temperature Info
WebServer Info

Menu 03 – Button Price

Define the amount charged for each selection (1-4).

Menu 04 – Button Payout

Sets up payout count for the 4 selection buttons.

Menu 05 – Enable Bill

This system only uses MDB validators. Depending on what type of MDB validator is used, the display will only toggle between the denominations accepted by the bill validator.

Menu 06 – Payout Table

Only bills enabled in **Menu 05** will be available in this menu. Enter the # of items dispensed for each bill denomination.

Menu 07 – Enable Hoppers

Enable or disable hoppers 1, 2, 3 and/or 4.

Menu 08 – Hopper Coin Value

Set the value of the coin being dispensed. Used only when providing tokens with change or when selections are not in use.

Menu 09 – Enable Coin Acceptor

Select between a Pulse or ccTalk coin acceptor. Enable or disable the coin acceptor.

Pulse – Enable → High or Low

ccTalk – Enable → Coin Values

Menu 10 – System Disable

Disables the machine if any of the selected devices goes offline.

Hopper 1

Hopper 2

CassetteU

CassetteL

ccTalk coin acceptor

Menu 11 – Promo-Token Payout

Enter the # of items paid for each promotional token.

Menu 12 – Dump Hoppers

Dumps the coins from all hoppers. A receipt is printed by the external printer.

Menu 13 – Audit Information

Prints a summary of all the sales. There are separate counters for tokens dispensed from each hopper.

Reset – Prints 2 copies of all the audit values and resets all the “**Resettable Counters**” to 0.

Every time **Reset** button is pushed the audit sequence number increases by one.

The “**Non-resettable Counters**” can be set to 0 by a hidden “Memory Dump”.

Print – Pushing the **Print** button prints all the audit values without resetting.

All the values are max 99,999 except for the **Total Cash** value which is \$100,000.00.

Menu 14 – Vend Item Name*

Choose from Items, Tickets or Tokens.

Menu 15 – Date Setup

Enter the date in this format: 20YY-MM-DD.

Menu 16 – Time Setup

Enter the time in this format: HH:MM. 24 hour format.

Menu 17 – Machine Number

Assign a machine number that will appear in audit report print out.

Menu 18 – Marquee Timer

Setup a time to turn On/OFF the marquee.

Menu 19 – Zip Code Enable

Enable or disable zip code verification for credit card transactions. Only works with a DataCap IPTran LT

Menu 20 – Access Code

Change the access code.

Menu 21 – Key Beep Enable

Enable or disable beep when a button is pressed.

Menu 22 – Location Name

Enter location name to print on credit card receipts.

Menu 23 – Bills Loaded Cassette Upper*

Enter number of bills loaded in the upper cassette. If this number is zero the machine will use the Bill Dispenser's low bill sensor instead.

Menu 24 – Bills Loaded Cassette Lower*

Enter number of bills loaded in the lower cassette. If this number is zero the machine will use the Bill Dispenser's low bill sensor instead.

Menu 25 – Bill Value Cassette Upper*

Enter the value of the bill being dispensed from the upper cassette.

Menu 26 – Bill Value Cassette Lower*

Enter the value of the bill being dispensed from the lower cassette.

Menu 27 – Printer Options**Menu 28 – Validator Enable**

Enable or disable the bank note validator.

Menu 29 – Nayax Test Mode**Menu 30 – Country***

Select between U.S and U.K. Selecting U.S. displays “\$”. Selecting U.K. displays “£” and “p”.

Menu 31 – Webserver

The Webserver IP configuration is displayed.

Menu 32 – Minimum Credit

Enter a minimum value for credit card transactions.

Menu 33 – Anti Stringing

Setup a maximum cash amount, maximum time and shut-off time for anti- stringing purposes.

Menu 34 – Programmer

Enable or disable dual display mode. In dual display mode the Flex Programmer Board is able to be used as a secondary display to access the programming menu.

3.5 – Remote Loading Software to the Flex-2 Board

1. What you need

- 1.1 Windows XP, or later pc with MicroSD port or USB to MicroSD card reader
- 1.2 MicroSD card (comes installed in the Flex-2 main logic board)

2. Transferring the file into the MicroSD card

- 2.1 Turn power off to the controller board.
- 2.2 Remove SD card.
- 2.3 The software is in a zip format and will be sent as an attachment to an email.
- 2.4 Save the zipped file and then unzip it.
- 2.5 **Do not change the name or the file extension!!!**
- 2.6 Copy the program file to the SD card.

3. Loading the file from the MicroSD card to the controller board

Note: All system settings will be erased once software is updated!!! We recommend making a print out of the settings before doing anything.

- 3.1 Turn power off to the controller board.
- 3.2 Gently push the MicroSD card into the MicroSD connector on the board.
- 3.3 Turn power on while holding the Button on the board for 2 seconds then release.

Update Software? Press **Yes** to continue loading the software. Press **Exit** to cancel.

- 3.4 Once the **Yes** key has been pressed a brief reminder will be displayed followed by a confirmation.

System Settings will be erased if Updated – This reminder will stay on for a few seconds before transitioning to the final confirmation message.

Update: XXXX-XX-XXX Start Next Exit – Press **Start** to load the software. Press **Next** view the next file loaded on the MicroSD card or Press **Exit** to cancel.

- 3.5 Software updating and completion.

Update: XXXX-XX-XXX Addr : 0x00012000 – Software name and flash memory address being programmed. Address should be cycling every ½ second.

Software Updated! Please Cycle Power – Cycle power to complete update.

4 Error messages:

One of the following messages may occur if there is **a problem loading the software**. In that case, remove the MicroSD card and check that the correct file is loaded on the MicroSD card.

- 4.1 **EEPROM Error Please Try Again** – EEPROM error.
- 4.2 **Main CRC Error V:XXX Update Required!** – The computed main program CRC is incorrect.
- 4.3 **Frame Error V:XXX While Reading File** – There was a checksum error while reading one of the files entries.

THE FOLLOWING IS A FATAL ERROR AND THE BOARD CAN NOT BE USED!!

- 2.4 **Fatal Error V:XXX Invalid Boot CRC!** – Do not load any software if this message occurs.

3.6 – Webserver

The webserver is an optional add-on that allows the owner of the machine to “log in” to the machine. From there one can view the status of the machine and make changes to the payouts.

The screenshot displays the American Changer webserver interface. At the top, there is a header with the AC logo, the text "AMERICAN CHANGER", and the "HOFFMAN MINT" logo. Below the header is a navigation menu with tabs: Login, Home (selected), Audit Information, Configuration, Network Settings, Email, and Refund. The main content area is divided into four sections:

- Sales:** A table showing sales data.
- Equipment Status:** A table showing the status of various machine components.
- Time/Date:** A table showing the current time and date.
- System Software:** A table showing the version of installed software.

At the bottom of the main content area, there is a "Location:" label followed by a text input field containing "Menu 22 For Heading". Below the main content area is a "Home Tab" label.

Description	Amount
Selection 1	0
Selection 2	0
Selection 3	0
Selection 4	0
Cash	\$0.00
Credit	\$0.00
Total	\$0.00

Description	State
Token Station	Ok
Temperature	22DegC
Coin Acceptor	Ok
Validator 1	Ok
Hopper 1	Evo V3.6.6W
Hopper 2	Evo V3.6.4X
Hopper 3	Disabled
Hopper 4	Disabled
Credit	No Comm.
Printer	Ok
Display	Ok

Description	Value
Current Time	01:04
Current Date	12/01/20

Description	Version
Flex Software	FX2V-0B-A02
Website	NBFV-0A-D09

Location:

Home Tab

Home Tab – Sales, Equipment Status, Time/Date, Last Transaction, and System Software are displayed in this Tab.

Description	Reset Counters	Non Reset Counters
Quarters	0	0
Dollar Coin	0	0
\$ 1	0	0
\$ 5	0	0
\$ 10	0	0
\$ 20	0	0
\$ 0	0	0
\$ 0	0	0
Total Cash	\$0.00	\$0.00
Total Credit Card	\$0.00	\$0.00
Total Sales	\$0.00	\$0.00
Promo Token 1	0	NA
Promo Token 2	0	NA
Promo Token 3	0	NA
Promo Token 4	0	NA
Coupon	0	NA
Hopper 1	0	0
Hopper 2	0	0
Hopper 3	0	0
Hopper 4	0	0
Sequence Number	NA	0
Refund Hopper 1	0	0
Refund Hopper 2	0	0

Status:

Audit Information Tab

Audit Information Tab – Resettable and Non-Resettable Counters are displayed in this tab. The counters can be reset from this tab as well.

Selection	Current Price	New Price Entry	Current Payout	New Payout Entry
#1	1.00	<input type="text"/>	5	<input type="text"/>
#2	5.00	<input type="text"/>	10	<input type="text"/>
#3	10.00	<input type="text"/>	20	<input type="text"/>
#4	20.00	<input type="text"/>	30	<input type="text"/>

Enter selection price with a decimal point: .50, 1.50, 1000.00

Time & Date	Current (Time & Date)	Net (Time & Date) Entry
24 Hour Time(hh:mm)	01:05	<input type="text"/>
Date(MM/DD/YY)	12/01/20	<input type="text"/>

Current Location Name	New Location Entry
Menu 22 For Heading	<input type="text"/>

Submit Changes

Status:

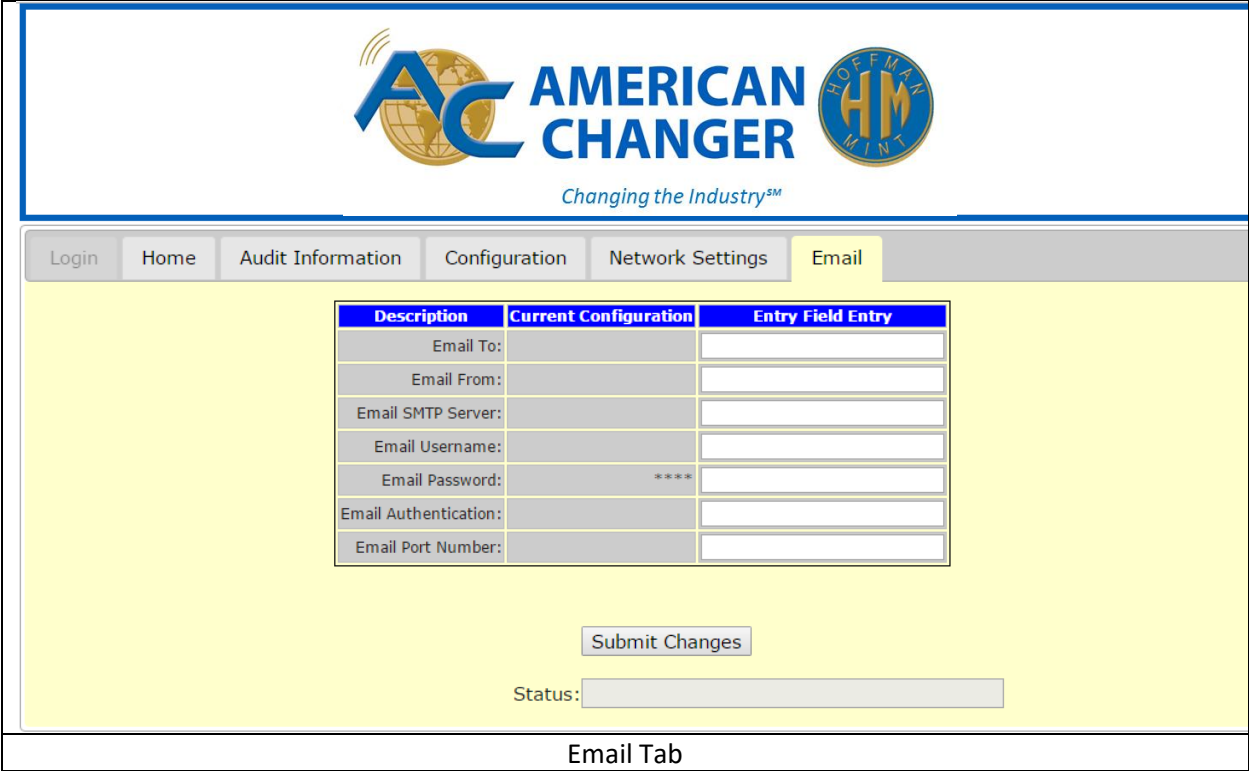
Configuration Tab

Configuration Tab – This tab allows the operator to send a new payout configuration, time, and date to the machine.

Description	Settings
IP Address	192.168.100.108
Network Mask	255.255.255.0
Gateway	192.168.100.1
DNS Server	75.75.75.75
PORT	80

Network Settings Tab

Network Settings Tab – This tab displays the IP Address, Network Mask, Gateway, DNS Server, and Port settings



The **Email To** from the picture above is to an AT&T SMS account. Below is a list of additional US and Canada SMS accounts:

AT&T: 10digitphonenumber@txt.att.net

MetroPCS: 10digitphonenumber@mymetropcs.com

Sprint: 10digitphonenumber@messaging.sprintpcs.com

T-Mobile: 10digitphonenumber@tmomail.net

Verizon: 10digitphonenumber@vtext.com

Max is 64 characters per email. Below is an example:

Machine;000 Val;Fail/Ok C1;Fail/Ok C2;Fail/Ok C3;Fail/Ok C4;Fail/Ok Pt;Fail/Ok

Where: **Val:** Validator Status
C1,C2,C3, C4: Cassette Status
Pt: Printer Status

Description	Hopper Content	Refund Amount
Hopper1	Token	<input type="text"/>
Hopper2	Token	<input type="text"/>

Dispense

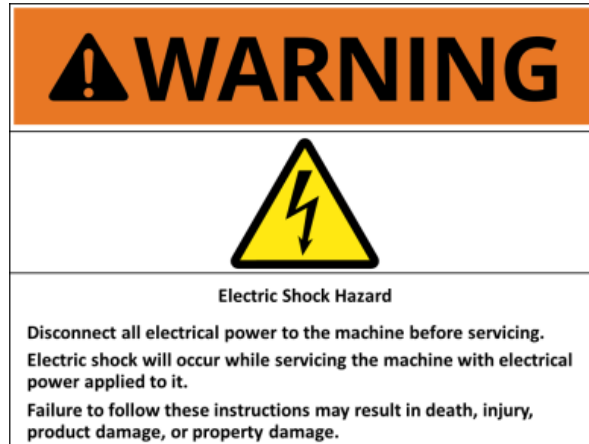
Status:

Refund Tab

Refund Tab – This tab allows the operator to pay back the customer.

Section 4 – Maintenance

⚠️ WARNING : DISCONNECT ALL ELECTRICAL POWER TO THE MACHINE BEFORE SERVICING.



4.1 – Coin Hopper Maintenance

Removal of the Electronics and Opto Sensor Board

All the electronics and sensors are placed on one board located behind the exit door at the side of the hopper. Slide the yellow button to the opposite position and remove the exit door where the electronics are mounted. All dirt must be cleaned with a soft moistened cloth. Isopropyl Alcohol is recommended for cleaning excessively dirty exit windows. The red LED on the exit window board will begin flashing indicating a dirty opto-sensor.

Warning: Be careful when re-inserting the board back in the hopper not to damage the cable located at the back of the board!

Low Coin Contact Plates

Looking inside the hopper through the top opening locate the two brass plates at the bottom of the hopper. If they appear to be dull and/or dirty remove the right section of the hopper by removing the 6 screws on that side. Use a Scotch-Brite pad, or another item made with abrasive material, to scrub the oxidation and dirt off of the brass plates.



4.1.2 ACC Coin Hopper Maintenance

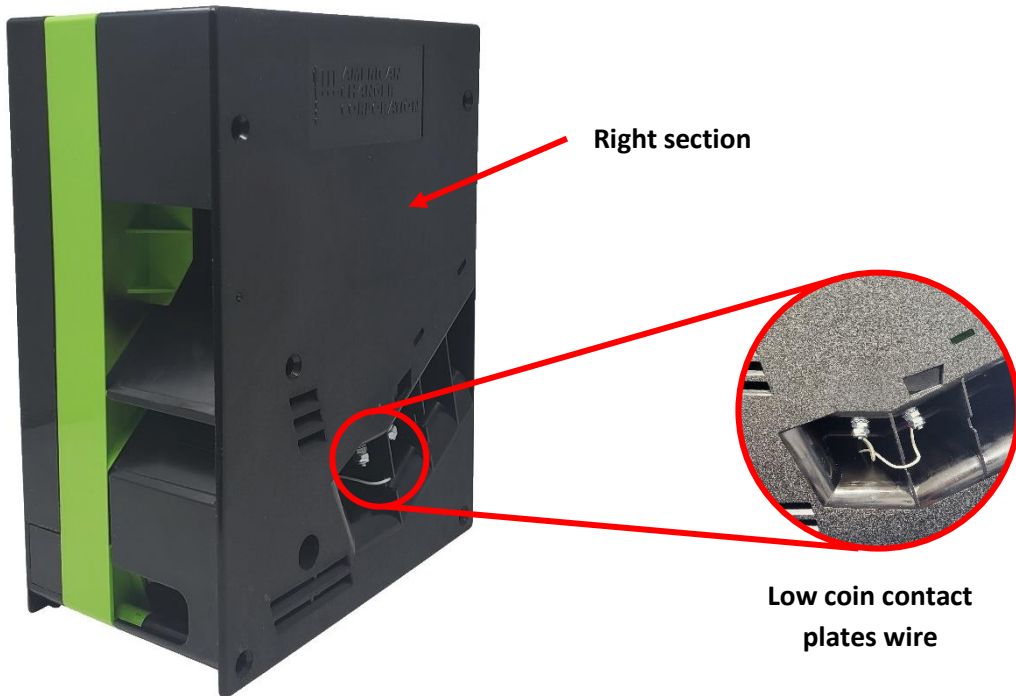
Removal of the Electronics and Opto Sensor Board

All the electronics and sensors are placed on one board located inside of the hopper. Remove the right section of the hopper by removing the two hex nuts connecting the low coin contact plates and then the 5 screws on that side. All dirt must be cleaned with a soft moistened cloth. Isopropyl Alcohol is recommended for cleaning excessively dirty exit windows.

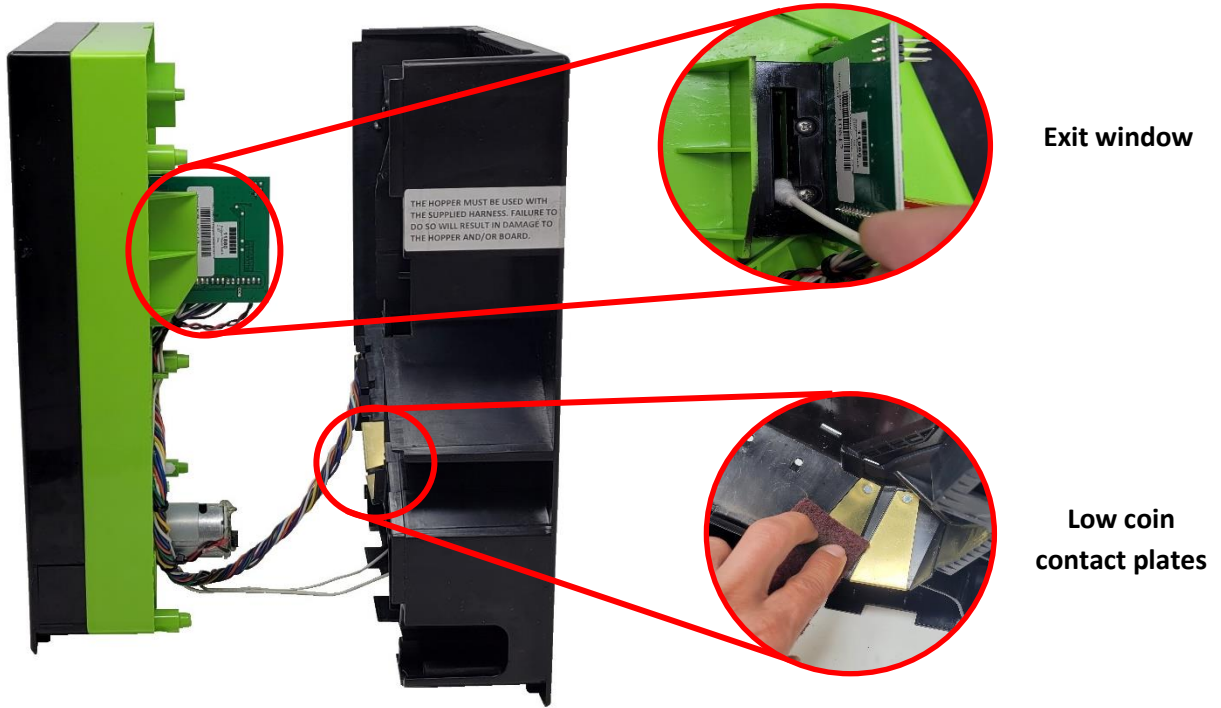
Warning: Be careful when re-inserting the board back in the hopper not to damage the cable located at the back of the board!

Low Coin Contact Plates

Looking inside the hopper through the top opening locate the two brass plates at the bottom of the hopper. If they appear to be dull and/or dirty remove the right section of the hopper by removing the two hex nuts connecting the low coin contact plates and then the 5 screws on that side. Use a Scotch-Brite pad, or another item made with abrasive material, to scrub the oxidation and dirt off of the brass plates.



Inside view



4.2 – Bill Validator Maintenance

Pyramid Acceptors Apex Model

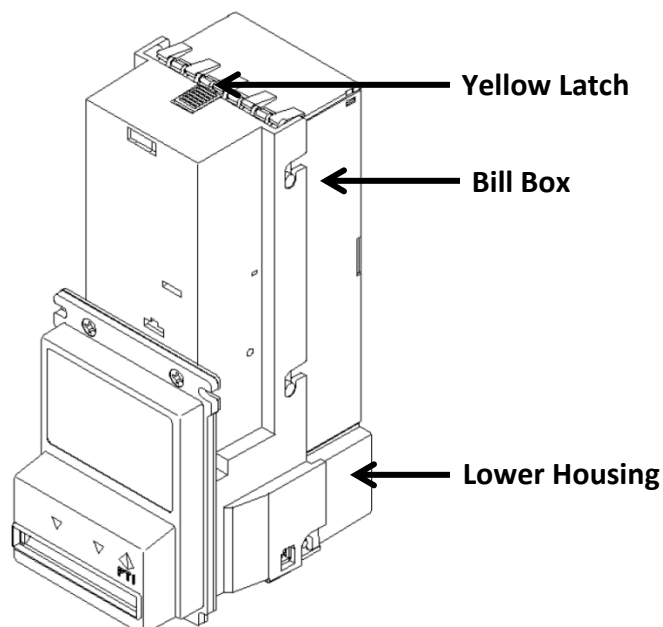
The Apex Series bill acceptor is relatively maintenance free. An occasional cleaning is all that is needed to keep the acceptor in top operation. **Please Visit the “service” section of the pyramidacceptos.com website to view videos explaining how install, clean, program, and troubleshoot the Apex bill acceptor.**

To clean the acceptor:

- Remove power from the machine.
- If equipped with a stacker, unlatch the cassette by pushing in the top latch and lifting the cassette up and out.
- Unplug the I/O connector and/or power connector from the right side of the acceptor.
- Remove the Lower Transport by pushing in the latch located on the bottom of the acceptor at the rear. Gently pull the Lower Transport out of the assembly.
- Clean the bill path using a soft cloth or towel. Do not use any cleaners other than a 50/50 mixture of water and isopropyl alcohol.

NOTE: Pay particular attention to the gray oval pieces of plastic in the lower and upper transport area. They must be cleaned well for proper operation.

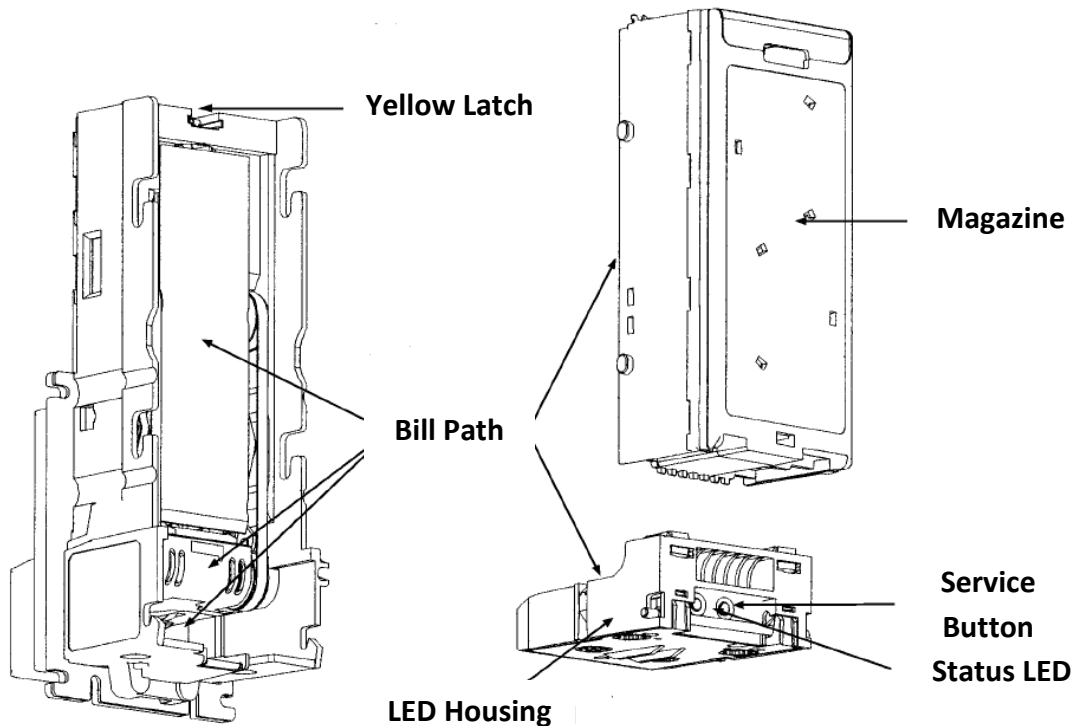
Do not use any oils or silicon spray on the acceptor!



4.2.2 Crane Payment Innovations (CPI) AE 2600 Series

You can clean the bill acceptor while it is still mounted in the machine

1. Remove power from the machine.
2. Unlatch the magazine by pushing the yellow latch (located on the top of the unit) toward the front of the unit.
3. Unhook and remove the magazine by holding the latch and lifting up and then back on the magazine.
4. Unlatch the LED Housing by lifting up on the metal bar (located below the Status LED).
5. Remove the LED Housing by holding the metal bar and pulling back on the LED Housing.
6. Clean the bill path with a soft cloth. You may use mild, non-abrasive, non-petroleum based cleaners if sprayed on the cloth.



4.2.3 Crane Payment Innovations (CPI) Talos T6,T7 and T8

BEZEL LED ERROR FLASH CODES

When the unit is ready and enabled, the bezel LEDs will flash continuously. If the bezel LEDs are off, the unit has an error. To determine the error, partially insert and hold a bill in the bill path until the bezel lights flash. Count the flashes and refer to the chart below.



Flashes	Problem	Solution
None	No power	Restore power to validator or machine
1 or 4	Bill path blocked	Check for jams. Remove bill magazine and lower housing assembly and inspect
2	Another vending component	Ensure the unit has been enabled, then check: <ul style="list-style-type: none"> • Vending Machine Controller • Coin manager and coin levels • Inventory levels • The door is locked properly
3	Lower housing assembly	Check that the lower housing assembly is seated. Ensure bill path is clean; see Cleaning section
5	Bill magazine removed	Reattach bill magazine
Continuous fast	Stacker full	Empty the bill magazine
Continuous slow	Unit is defective	Replace the unit

TROUBLESHOOTING

These are some common, easy-to-solve issues that may pop up during installation:

If this happens	Try
The unit will not power up	<p>Check Harnesses: Cables may be loose, not properly connected or pins may be bent</p> <p>Check Source Voltage: Ensure that power is being supplied to the bill validator.</p>
The unit has power, but will not accept a bill	<p>Ensure the unit has been enabled, then check:</p> <ul style="list-style-type: none"> • Vending Machine Controller • Coin manager and coin levels • Inventory levels • The door is locked properly

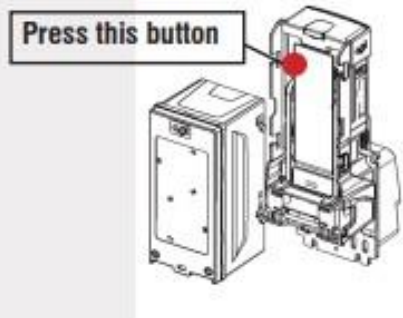
CLEANING

The Talos bill validator will not need to be cleaned as often as magnetic sensing bill acceptors. If cleaning is required, use a soft cloth moistened with a mild, non-abrasive detergent.

ENABLING BILLS AND VEND COUPONS

Follow this process to enable or disable bills or vend coupons:

1. Remove the bill magazine, then use a pencil or a screwdriver to press the button to enter configuration mode:



2. Reattach the bill magazine.
3. Insert the bill or vend coupon.
4. The bezel LEDs flash when the bill or vend coupon is returned.
5. Count the flashes to determine the outcome using the chart on the next section.

ENABLING BILLS AND VEND COUPONS - CONTINUED

Number of Flashes	Meaning
10	The bill or vend coupon has been enabled successfully
7	The bill validator was unable to read the bill or vend coupon. Try again.
3	The bill or vend coupon has been disabled

CONFIGURATION COUPONS

The unit is pre-configured with the following options enabled:

- Accept \$1 bills
- Four way accept

Use the included coupon to change the settings:

1. Carefully cut out the coupon
2. Fill out each line using an HB or #2 pencil

Section	Changes	Options
1	Bill Way Accepted	1 - Face up in one direction (green seal first) 2 - Face up in either direction 4 - Face up or down in either direction
2	Bills Enabled	On or off to enable or disable a bill
3	Recycled Bill	Can be left blank, but is required for the recycler
4	Accept Inhibit	Requires a Recycler

CONFIGURATION COUPONS - CONTINUED

Section	Changes	Options
5	Acceptance Mode	<p>Mode 0: Factory default. No acceptance modes active.</p> <p>Mode 1*: If fraud is detected the validator enters an out-of-service time-out, the stacker plate extends into the bill magazine and the bezel LEDs flash. If any sensors are blocked, the time-out persists until the blockage is cleared.</p> <p>Mode 2*: All the features of Mode 1, plus the stacker plate extends into the bill magazine when idle.</p> <p>Mode 3*: All the features of Mode 2, but more aggressive. It may increase jams and service calls. Mode 3 is recommended for temporary use only.</p> <p>*Requires power</p>

Insert the configuration coupon and verify the settings were accepted by counting the bezel flashes

Flashes	Meaning
10	Configuration coupon accepted and unit successfully programmed.
1 - 5	Coupon rejected. Number of flashes corresponds to the coupon section that was improperly filled out. Try again.
7	Coupon not read. Confirm the coupon is correct and try again.

4.2.4 Astro Systems GBA ST1-C

Cleaning the Validator Note Path

Equipment Required

- Cotton swab or lint-free cloth.
- Cleaning solution - a mix of water and up to 50% Iso-Propyl Alcohol (IPA) is recommended.
- **DO NOT** use more than 50% IPA. **NEVER** use solvent-based cleaning agents, such as Amberclens, pure alcohol, petrol, methylated spirit or white spirit on this product as the unit will be severely damaged.

Anti-Static precautions should always be observed when cleaning the GBA ST1C unit.

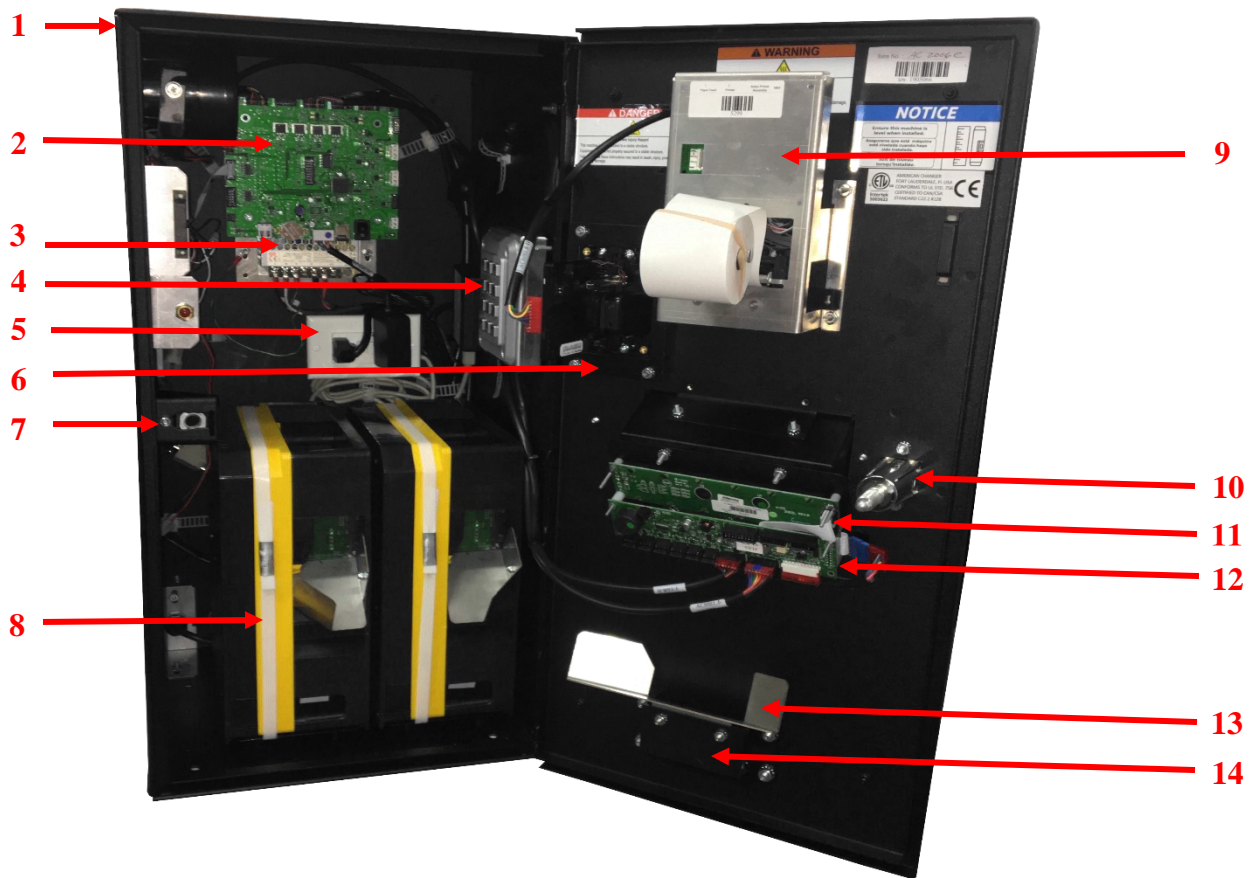
1. Ensure the power supply to the GBA ST1C unit is switched OFF.
2. Remove the Cassette.
3. Lift up the purple Access Latch on the back of the Bottom Sensor Assembly, and gently slide the module out of the Channel Assembly.
4. Pick off and discard any large items of debris from the note path of the Bottom Sensor Assembly. Repeat for the other side of the note path (on the drive belt assembly).
5. Using the cotton swab, or lint-free cloth, wetted with cleaning solution and applying light force only, carefully clean all sensor windows in both halves (upper and lower) of the note path. If a sensor window has become badly scratched do not attempt to polish it, contact your local regional office for further advice.
6. Continue with the swab, or lint-free cloth, to clean the rest of the note path, including sprung rollers.
7. Visible parts of belts can be cleaned by wiping with a cleaning solution-soaked cotton swab or wipe. It is not possible to clean the whole belt surface without removing the belts from the unit.
8. Use an additional swab or cloth to dry the cleaned area, if required.
9. Slide the clean Bottom Sensor Assembly back into the Channel, ensuring that the Access Latch clips securely into the Channel.
10. Re-fit the Cassette.
11. The supply to the unit can now be switched ON.

Clearing a Note Jam

1. Ensure the power supply to the GBA ST1C unit is switched OFF.
2. Remove the Cassette.
3. Lift up the purple Access Latch on the back of the Bottom Sensor Assembly, and gently slide the module out of the Channel Assembly.
4. Clear the jammed note(s) from the note path.
5. Re-assemble unit and switch the power supply back ON.

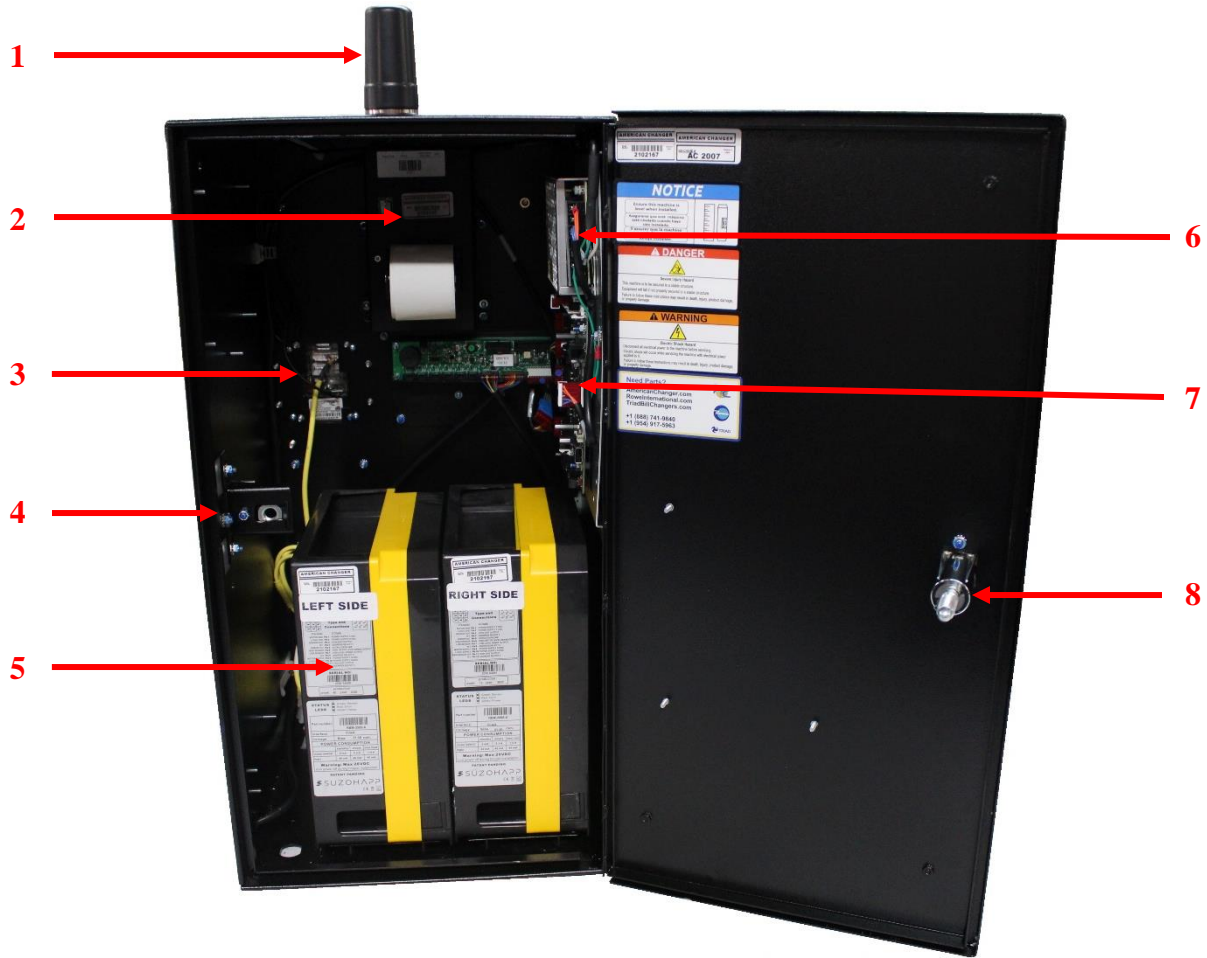


4.3 – Parts List Cabinet AC2006



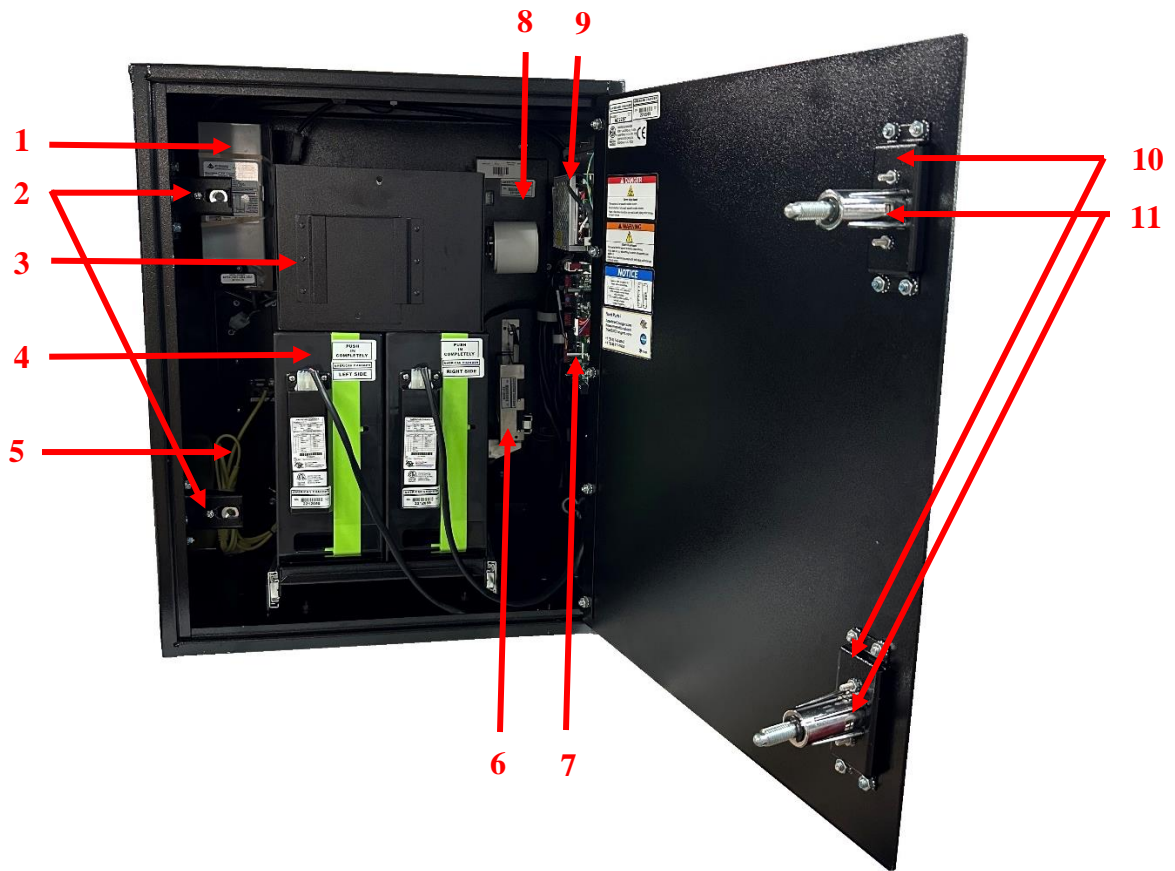
Number	American Changer Part #	Description
1	AC2006	AC2006 Cabinet
2	AC8001-FLEX2BD	Flex-2 Main Logic Board
3	AC8062-FLEX	24v power supply
4	AC9044	Key pad
5	AC9000-GFCI	15A 125VAC GFCI
6	AC9090	Magtek Credit Card Reader
7	AC1000-LB	Lock Bracket
8	AC1047-SUZO	Evolution Hopper with 12 Pin Female Connector
9	AC7090	Receipt Printer
10	AC5080-QS	Screw in T-Handle
11	AC8065.1	Display
12	AC8001.1-FLXI0B	Flex I/O Board
13	AC5400-UCC	Coin chute
14	AC1013-P	Coin Cup

Cabinet AC2007



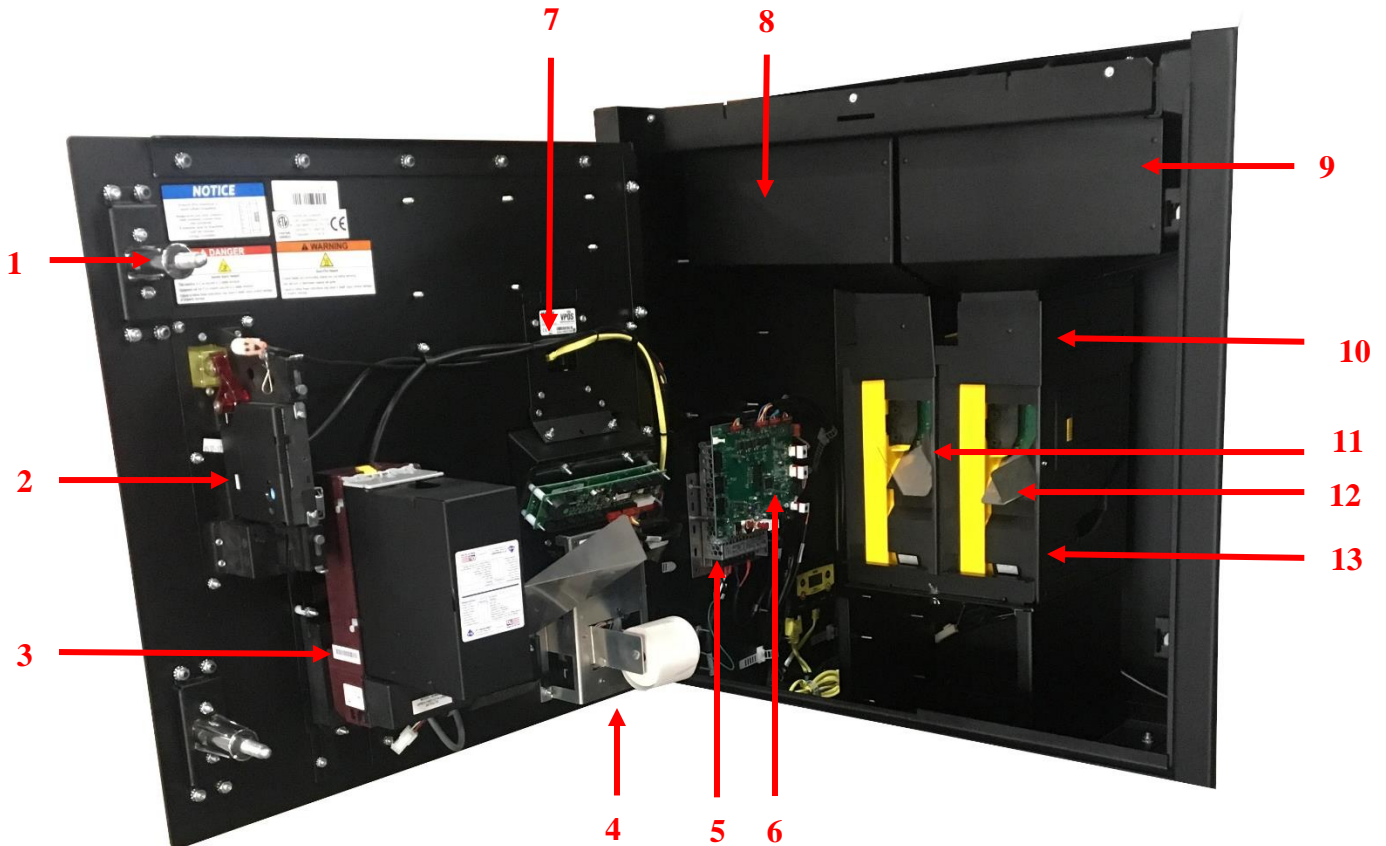
Number	American Changer Part #	Description
1	AC7777-STBANT	Stub Antenna
2	AC7090	Receipt Printer
3	AC7777-NAXYAXVT	VPOS-Touch
4	AC1000-LB	Lock Bracket
5	AC1047-SUZO	Evolution Hopper with 12 Pin Female Connector
6	AC8062-FLEX	24v power supply
7	AC8001-FLEX2BD	Flex-2 Main Logic Board
8	AC5080-QS	Screw in T-Handle

Cabinet AC2207



Number	American Changer Part #	Description
1	Bill Validator	Various Models Available. Contact American Changer for part number. Apex model shown in above picture.
2	AC2002-LB	Lock Bracket
3	AC2207-CC	Coin Chute
4	AC1047.5-A	American Changer Hoppers
5	AC7777-NAXYAXVT	VPOS Touch
6	AC2066.4	Condor Coin acceptor
7	AC8001-FLEX2BD	Flex-2 Main Logic Board
8	AC7090	Receipt Printer
9	AC8062-FLEX	24v power supply
10	AC1099-TH	T-Handle lock bracket
11	AC5080-QS	Screw in T-Handle

Cabinet AC6007



Number	American Changer Part #	Description
1	AC5080-QS	Screw in T-Handle
2	AC2066.4	Condor Coin acceptor
3	Bill Validator	Various Models Available. Contact American Changer for part number. Apex model shown in above picture.
4	AC7090	Receipt Printer
5	AC8001-FLEX2BD	Flex-2 Main Logic Board
6	AC8062-FLEX	24v power supply
7	AC7777-NAXYAXVT	VPOS Touch
8	AC6000-RL	Reservoir Left
9	AC6000-RR	Reservoir right
10	AC-1002-HEXTASSY	Hopper Extension
11	AC401-HCL	Left Hopper Coin Chute
12	AC401-HC	Right Hopper Coin Chute
13	AC1047-SUZO	Evolution Hopper with 12 Pin Female Connector

4.4 – Warranty Terms and Conditions

LIMITED WARRANTY AND EXCLUSIVE REMEDIES – The goods delivered hereunder are subject to the terms of American Changer Corporation’s (Seller or Seller’s) Limited Warranty provided with the deliverable, or if there is no such warranty, the terms set forth herein. In the event of any inconsistency between the written warranty provided with deliverable, and the description of the warranty set forth herein, the written warranty shall govern.

Seller warrants that its new products and parts are free from defects in material or workmanship in normal use for one year from the date of shipment by Seller. In addition, this warranty will be extended for a second year for Bill Validators. Refurbished parts carry a six-month warranty from date of shipment by Seller.

Seller will furnish without charge, F.O.B. Fort Lauderdale, repair or replacement of any defective part qualifying for repair and/or replacement under the terms of its warranty, within one year of the date of delivery. Any transportation, diagnosis calls, or similar expenses are not included. The warranty for any replacement part will only apply to the remainder of the warranty period.

This warranty may not be changed or modified without the consent of an Executive Officer of Seller.

To make a claim under this warranty, Buyer must call Seller’s Service Department and provide the model number and serial number of the goods. If the goods were purchased from a reseller, Buyer must provide the name, address and telephone number of the reseller. Seller reserves the right to request proof that the reseller purchased the goods from the Seller.

Seller’s Limited Warranty does not cover damage caused by: (I) shipping or physical abuse; (II), misapplication or misuse including improper installation, startup, storage, or failure to comply with any instructions for use set forth in the owner’s manual supplied with the goods, or use, storage or operation of the goods in a manner that fails to comply with all applicable laws, rules and regulations, including, without limitation, any local labeling requirements or labeling required under California’s Safe Drinking Water and Toxic Enforcement Act of 1986 (also known as “Proposition 65”) and its implementing regulations; (III) failure to perform necessary maintenance and cleaning in accordance with the owner’s manual provided with the goods or comply with all applicable law or regulation, all applicable labeling requirements (IV) power surges, improper electrical supply and/or lightning strike; (V) operation, use or storage of goods in weather or outdoor conditions which do not comply with the guidelines set forth in the owner’s manual supplied with the goods; and (VI) fires, floods, or other casualty or Acts of God outside of Seller’s control.

This warranty is void if: (I) repairs and/or replacement are performed by anyone other than Seller or a qualified repair technician; (II) the goods were purchased in a used condition or not in the original packaging; (III) the goods have any defects or damage due to any alterations, or damage caused by improper electrical supply, shipping and handling, fire, flood, misuse, vandalism, or any other condition or event outside of Seller’s control, or the goods are used , stored or operated in a manner that fails to comply with any applicable law, rule, or regulation,

including, without limitation any local labeling requirements or labeling required under California’s Safe Drinking Water and Toxic Enforcement Act of 1986 (also known as “Proposition 65”) and its implementing regulations; (IV) the failure to clean and maintain the product in accordance with the owner’s manual supplied with the goods or comply with all applicable law and regulations and any applicable labeling requirements; (V) the goods are operated, used, or stored in weather or outdoor conditions which do not comply with the guidelines set forth in the owner’s manual.

The owner is responsible for: (I) using the goods supplied by the Seller in accordance with the installation, start-up, use, storage, inspection, and service requirements, and all other instructions set forth in the owner's manual supplied with the goods; (II) providing normal cleaning and maintenance in accordance with the owner's manual supplied with the goods; (III) operating, using, and storing the goods in accordance with the owner's manual supplied with the goods and in compliance with all applicable laws, rules, or regulations, including any local labeling requirements or labeling required under California's Safe Drinking Water and Toxic Enforcement Act of 1986 (also known as "Proposition 65") and its implementing regulations; (IV) contacting American Changer during the warranty period to obtain a Return Material Authorization to make a claim under this warranty; (V) providing proof of purchase if requested, and if the goods were purchased from a reseller, the name, address, and telephone number of the reseller; (VI) providing any other information American Changer may reasonably request to confirm that the goods are eligible for repair/replacement under this warranty; (VII) paying for any repairs or replacement of parts outside the scope of this warranty; (VIII) paying any shipping costs.

ENTIRE WARRANTY

THIS WARRANTY CONSTITUTES THE EXCLUSIVE REMEDY OF THE PURCHASER AND IN LIEU OF ALL OTHER WARRANTIES, EXPRESS OR IMPLIED, INCLUDING, WITHOUT LIMITATION, ANY IMPLIED WARRANTY OF MERCHANTABILITY OR FITNESS FOR A PARTICULAR PURPOSE TO THE EXTENT PERMITTED BY LAW.

SELLER EXPRESSLY DISCLAIMS ALL LIABILITY ARISING OUT OF THE THEFT, MISAPPROPRIATION, OR MISUSE OF ANY PERSONAL FINANCIAL INFORMATION OF AN END USER OF THE GOODS, INCLUDING, BUT NOT LIMITED TO, CREDIT CARD AND/OR DEBIT CARD NUMBERS, PERSONAL IDENTIFICATION NUMBERS, PERSONAL PASSWORDS OR PASSCODES, OR OTHER SIMILAR PERSONAL INFORMATION OF THE USER OF THE GOODS.

IN NO EVENT SHALL AMERICAN CHANGER BE LIABLE TO BUYER UNDER THIS WARRANTY FOR AN AMOUNT WHICH EXCEEDS THE PURCHASE PRICE OF THE GOODS.

IN NO EVENT SHALL AMERICAN CHANGER BE LIABLE FOR ANY INCIDENTAL OR CONSEQUENTIAL DAMAGES OR LOST PROFITS, OR FOR DAMAGES ARISING OUT OF BUYER'S INSTALLATION, OPERATION OR STORAGE OF THE GOODS IN A MANNER THAT FAILS TO COMPLY WITH ANY APPLICABLE LAW, RULE, OR REGULATION, INCLUDING ANY LABELING LAW, RULE OR REGULATION INCLUDING, WITHOUT LIMITATION, CALIFORNIA'S SAFE DRINKING WATER AND TOXIC ENFORCEMENT ACT OF 1986 (ALSO KNOWN AS "PROPOSITION 65") AND ITS IMPLEMENTING REGULATIONS.

SELLER EXPRESSLY DISCLAIMS ALL GUARANTEES AND/OR WARRANTIES, EXPRESS OR IMPLIED, INCLUDING WARRANTIES OF MERCHANTABILITY AND FITNESS FOR A PARTICULAR PURPOSE, OR USEFUL LIFE.

LIMITATIONS OF DAMAGES – Seller's liability for any loss or damage arising out of, or resulting from, any breach or default by Seller in connection with the sale of goods hereunder, shall not exceed the purchase price thereof, regardless of whether such liability arises in contract, tort (including, without limitation, negligence or strict liability) or otherwise, and in no event shall Seller be liable for incidental or consequential damages of any kind or for lost profits.

Buyer is solely responsible for installing, storing, operating and maintaining the goods delivered hereunder in compliance with all applicable laws, rules and regulations, and any local labeling requirements or labeling required under California's Safe Drinking Water and Toxic Enforcement Act of 1986 (also known as "Proposition 65") and its implementing regulations. In no event shall Seller be liable for Buyer's failure to install, store, operate or maintain the goods in compliance with any applicable law, rule or regulation.

WARRANTY FORM

The Warranty Form must be filled out completely and mailed to:

American Changer Corp.

1400 NW 65th Place

Ft. Lauderdale, FL 33309

Attention: Extended Warranty Department

Machine Information

Machine Model & Serial Number: _____

Validator Serial Number: _____

Validator Serial Number: _____

Hopper Serial Number: _____

Hopper Serial Number: _____

Logic Board Serial Number: _____

Coin Mechanism Serial Number: _____

Your Name: _____

Company Name: _____

Billing Address: _____

Billing Address: _____

City: _____

State and Zip Code: _____

Phone Number: _____

Email Address: _____

Note: The purpose of this form is to enter your information in our customer database. This information will not be shared with anyone outside of American Changer Corp. It will be used to inform you of equipment upgrades.