

AMERICAN CHANGER & HOFFMAN MINT

We Are Changing the IndustrySM



1400 N. W. 65th Place, Fort Lauderdale, Florida 33309
T: (+1) 954-917-3009 F: (+1) 954-917-3079
www.americanchanger.com www.hoffmanmint.com



AC2007 Flex System Installation Guide

Step 1: Remove main board, relay board, and power supply.

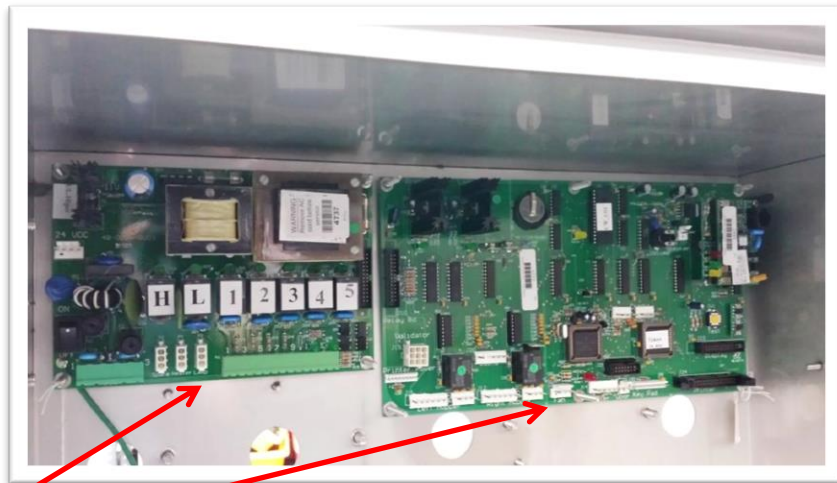


Figure 1

Relay Board
and Main
Board
respectively

Step 2: Remove all harnesses inside of the cabinet except for the validator harness, hopper harnesses, and printer harnesses.

Step3: Before mounting the plate with the board and power supply four studs need to be removed. They can be removed from the cabinet or broken off. The studs are circled in the picture below. The picture is a view looking at the right wall of the cabinet from the rear of the machine.



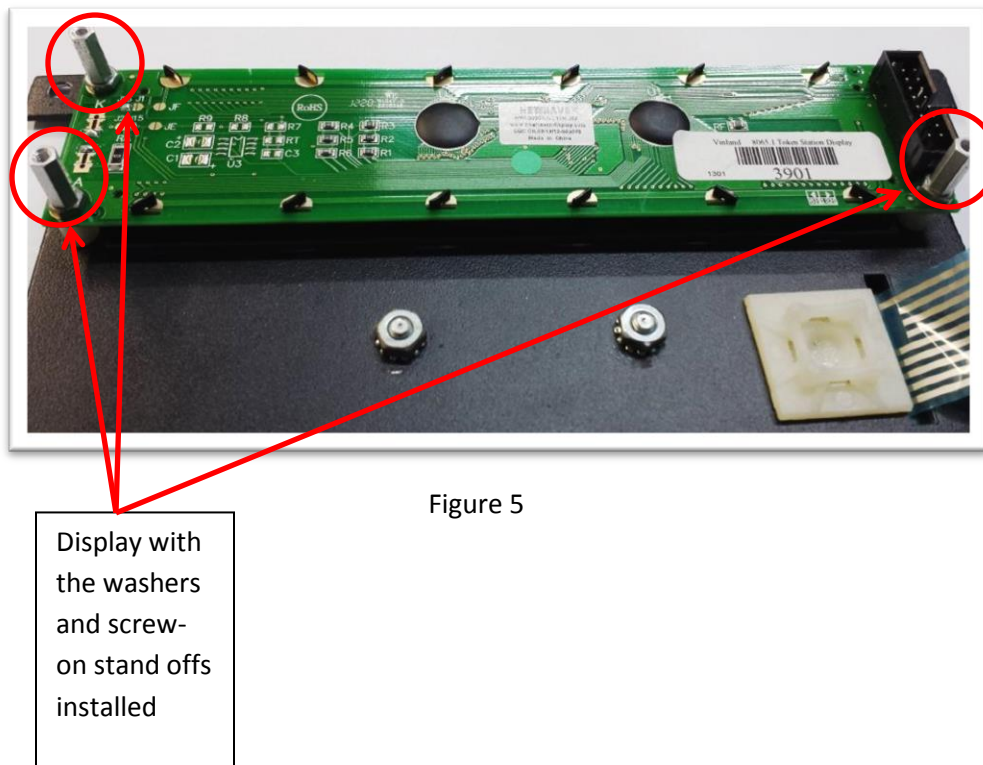
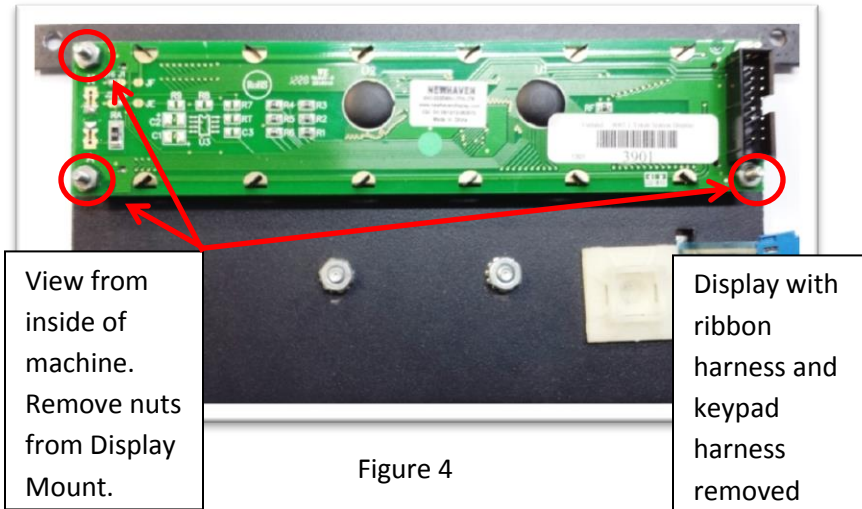
Figure 2

Step 4: On the wall the studs were removed from mount the plate with the board and power supply. It will mount on the two studs closest to the top of the cabinet. Optional adaptor boards may be mounted on this plate as well.



Figure 3

Step 5: Remove the three nuts that are holding the display in place. See Figure 4. Washers and screw on stand-offs were supplied with the kit. Add a washer and a screw on stand-off to the studs that previously had nuts. See Figure 5



Step 6: Attach the I/O Board to the back of the display by inserting the connector on the I/O Board into the matching connector on the display. Use supplied screws to secure the I/O Board to the stand-offs. See Figures 6 & 7.



I/O Board
Top View



Figure 6

Connector

I/O Board
Bottom View



Matching
Connector
on Display

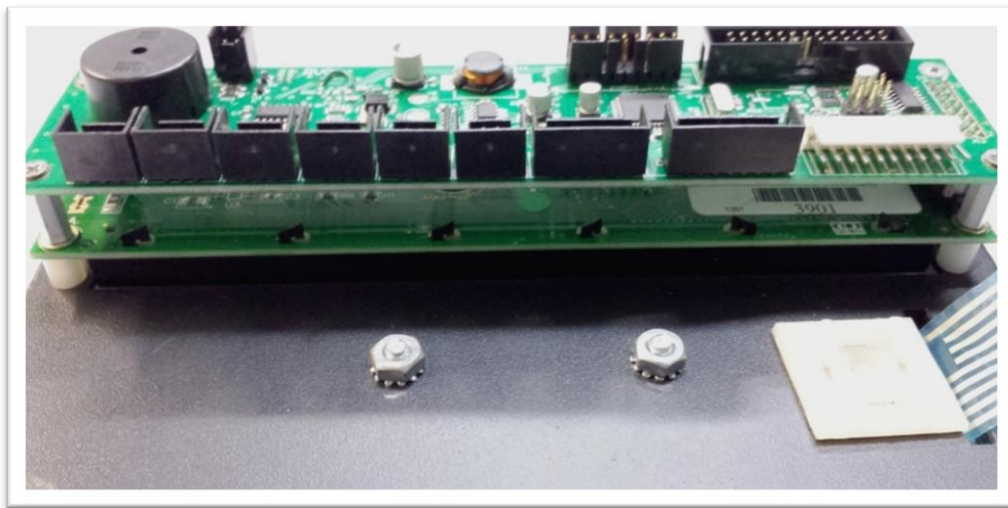


Figure 7

Completed
Display with I/O
Board Installed

Step 7: Place the Tran Unit flat on the floor of the cabinet. Connect the beige color communication cable, Ethernet cable/phone line, and then connect the power adaptor.

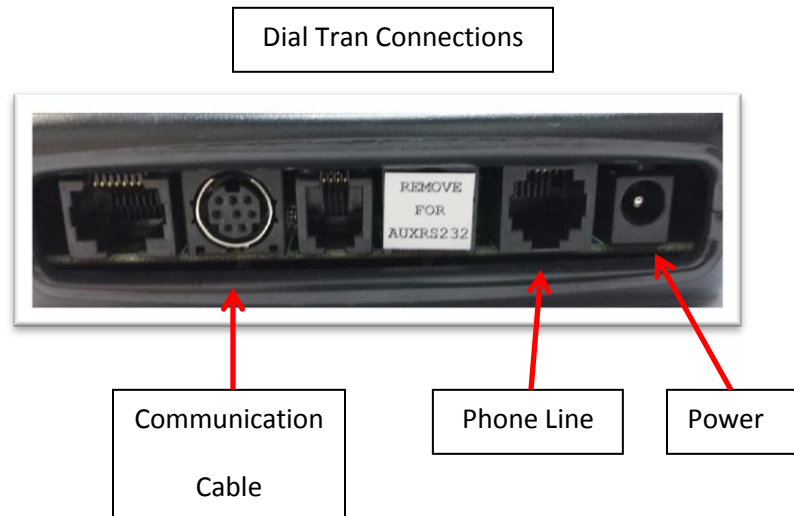
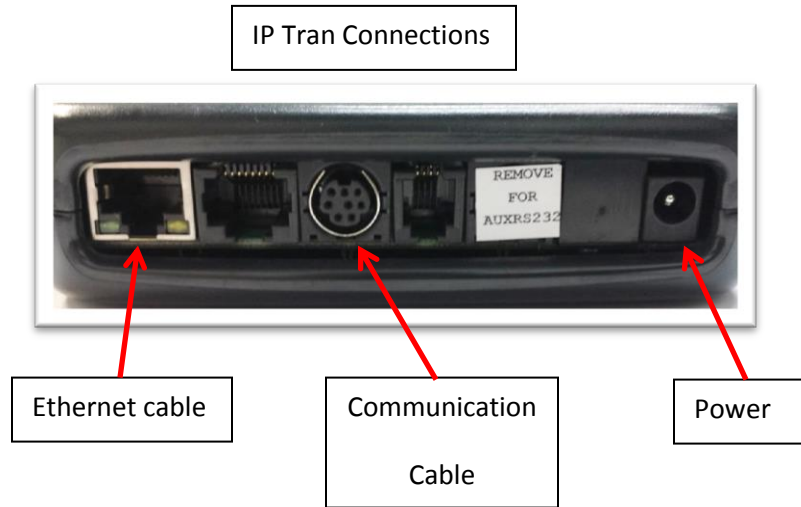


Figure 8

Step 8: Connect your heater in to “#2” on the power board.

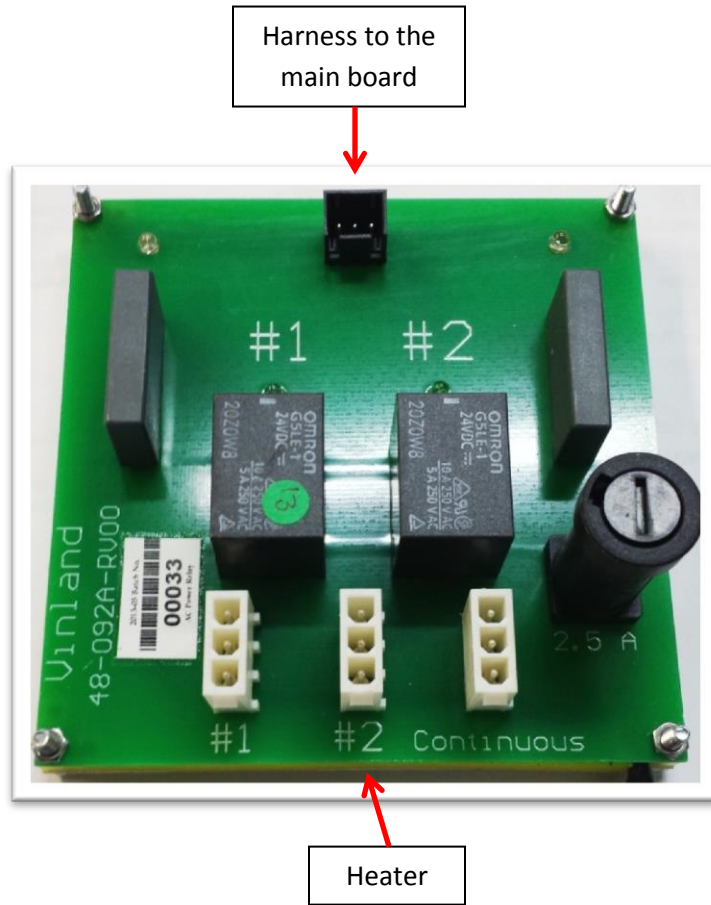


Figure 9

Step 9: Use the below picture to help with connecting the components to the main board.

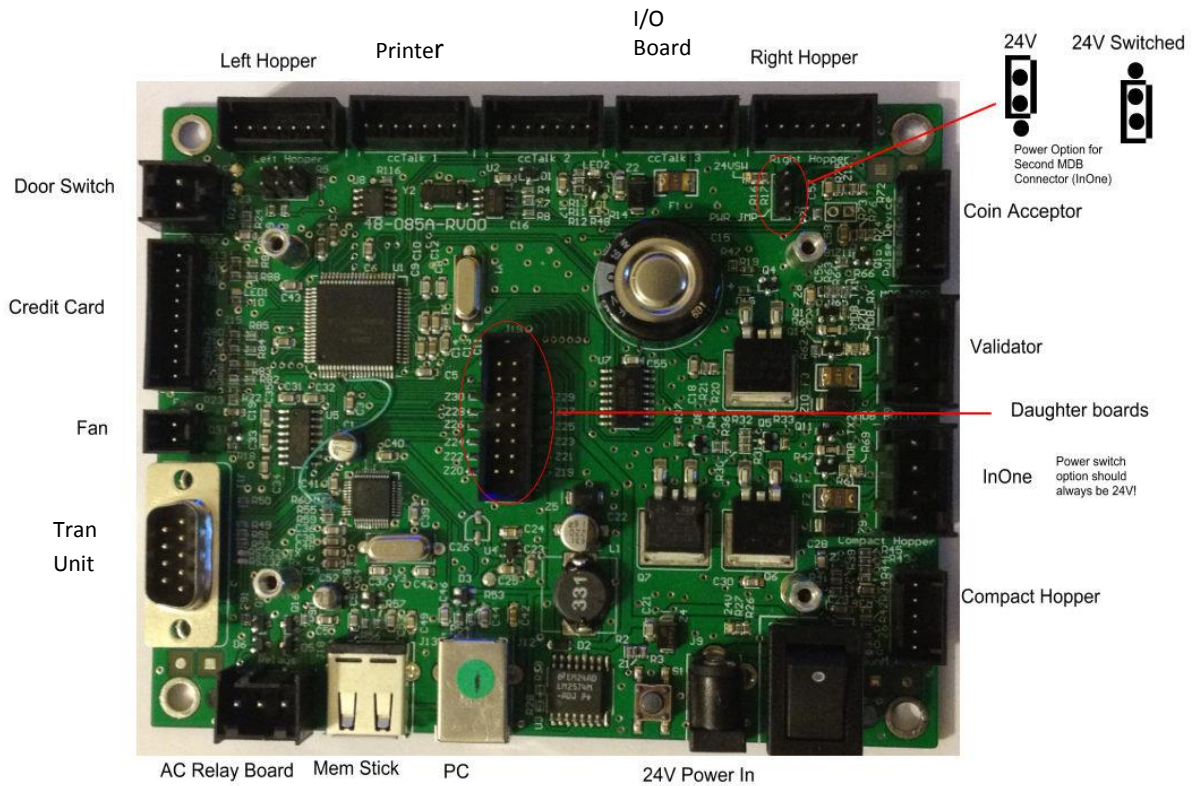


Figure 10

Additional steps for connecting optional adaptor boards

This section details how to connect adaptor boards to the main board. Adaptor boards are not shipped with all orders. These boards will already have the necessary harnesses attached to them. All that will be needed is to connect the component to the adaptor board. If you did not receive any adaptor boards with your order then skip this section.

Step 10: Connect the hopper plate harness to the hopper adaptor board. Then connect the harness that was already attached to the adaptor board to the main board.

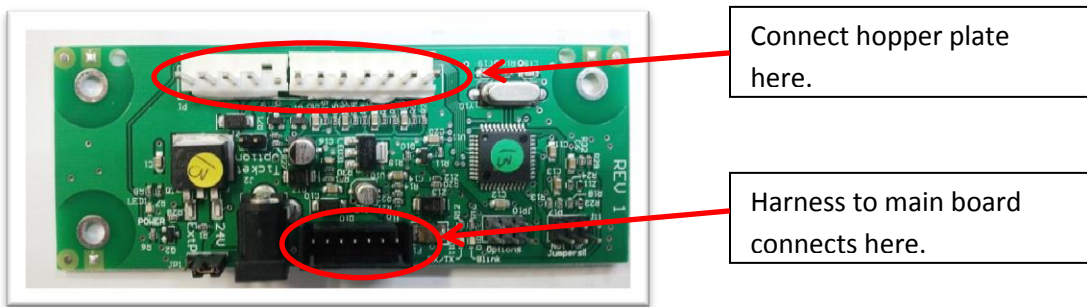


Figure 11

Step 11: Connect the flat “ribbon” style harness from your printer to the adaptor board. Then do the same for the power harness. Again connect the harness that is already attached to the adaptor board to the main board.

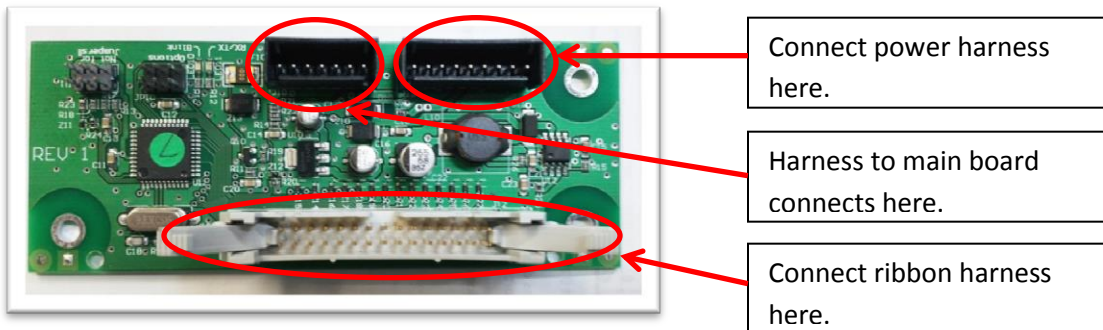


Figure 12

Installing the External Keypad

The following steps are used to install the external keypad that came with the kit. This keypad is used to navigate the programming menu as well as input values while in the programming menu. The external keypad can also be used to input a zip code if zip code verification is enabled. American Changer recommends having a professional drill the holes in the stainless steel face plate.

Step 1: It is recommended to mount the keypad next to the display. Place the keypad against the face plate and use a felt tip marker to mark your four mounting holes. You will also need to mark the area for the harness to connect to the key pad.

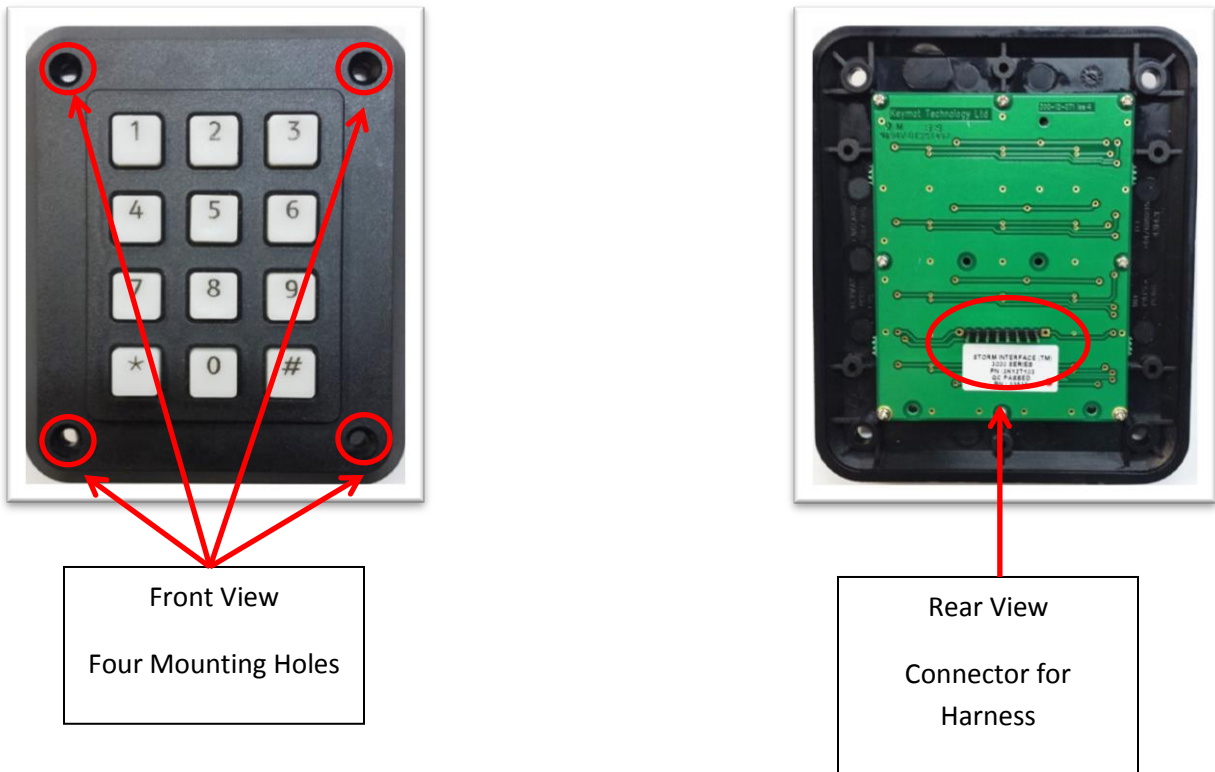


Figure 13

Step 2: Before drilling your holes remove the hoppers from the machine. Using titanium bits drill the holes in the face plate. You will need to continue through the plate and then through the steel cabinet.

Step 3: Secure the keypad to the faceplate using the supplied screws and nuts.

Step 4: Connect the harness from the I/O Board to the keypad. Connect as shown in the below picture. If not connected properly the numbers will not be recognized properly.



Figure 14