



Chevrolet/GMC 1500 4x4 2019 up

FLS-217004_revA

Written By: Sebastien Blain

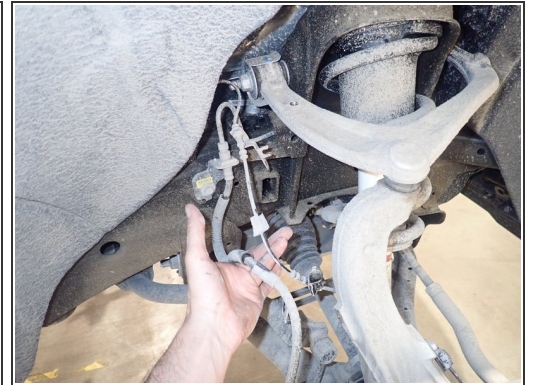
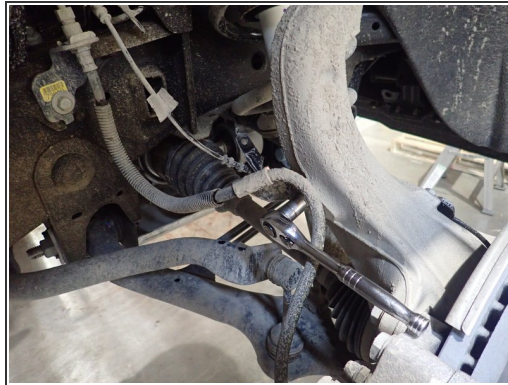


Step 1 — Front Elka shocks installation



- Lift the vehicle off the ground, then remove front tires.
- Remove sway-bar link on both sides to allow lowers arms to temporary move separately.

Step 2 — Installing the front shocks (continued)



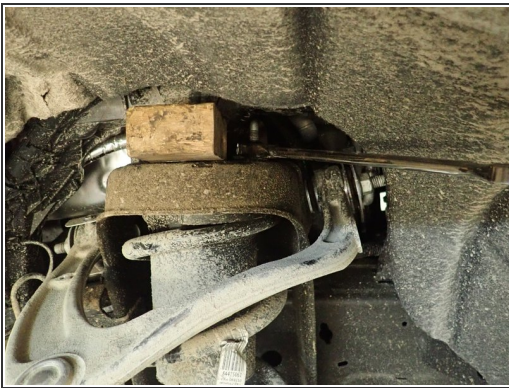
- Remove the bolts that hold the brake line on each side to make sure you don't damage them during installation.

Step 3 — Installing the front shocks (continued)



- Separate upper control arms from steering knuckles.

Step 4 — Installing the front shocks (continued)

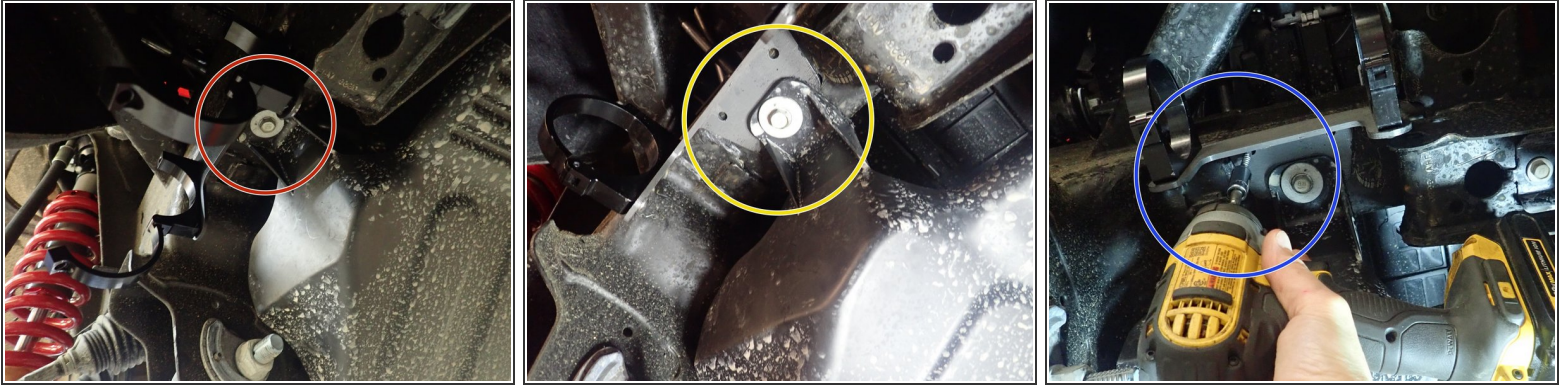


- Remove plastic caps on upper shocks studs, then unscrew the 3 upper nuts.
- Remove lower shock bolts.
- To remove OEM shocks: push the bottom of shocks rearward, lower the shocks to clear frame upper mount, then take out the shocks from above the upper mount.

Step 5 — Installing the front shocks (continued)



- To install your new Elka shocks, do the inverse procedure showed on step 4. Shock reservoirs must face to the front of vehicle. You may have to push lower suspension arm to put the shocks in place. (Right side shown)
- Be sure the lower mount's flats are facing lower arm as shown by blue circle. You can turn the lower pin if needed.
- Start installation with the provided lower bolts and washers. Apply threads locker on bolts, then torque them at 50 ft.lb.
- At the top, install provided washers and nuts, then torque them at 35 ft.lb.

Step 6 — Installing the front shocks (continued)

- For installation of reservoir brackets, locate the bolt that hold the front plastic protector as shown by red circle. (Right side shown)
- Remove this bolt, slide the reservoir bracket between frame and plastic protector then screw the bolt in the center hole of bracket as shown by yellow circle.
- Secure the bracket with provided metal screw in one of the two smaller bracket's holes as shown by blue circle. Bracket must be parallel to frame.

Step 7 — Installing the front shocks (continued)

- Sit reservoir into bracket's clamps, then place the reservoir in a way to place reservoir fitting and hoses as close to the frame as possible, without touching it. **BE CAREFUL TO NOT OVERBEND THE HOSE OR MAKE THE HOSE RUBBING ON SUSPENSION COMPONENTS.**
- When reservoir is placed properly, apply threads locker on clamp's bolts and torque them at 10 ft.lb. (Right side shown).

Step 8 — Installing the front shocks (continued)

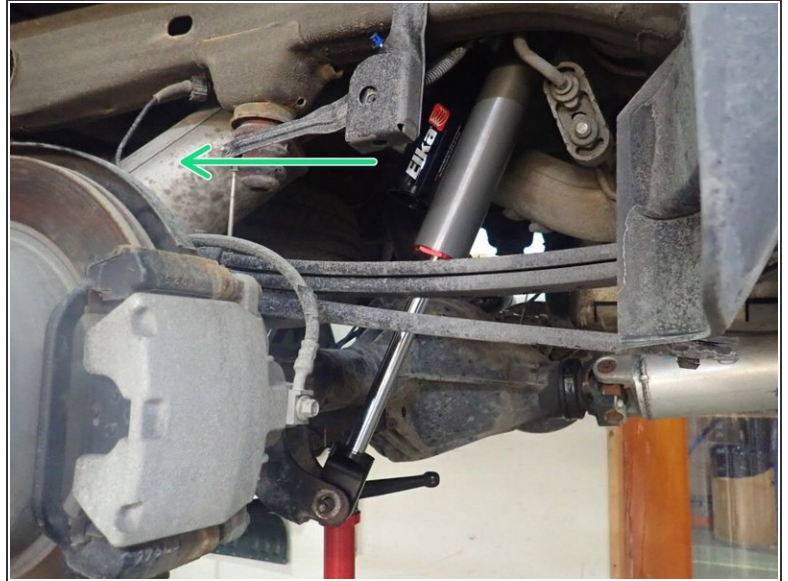


- Left side shown.
- To complete front installation, put back upper arm, sway-bar links, brake lines and wheels.
- **ALIGNMENT IS CRITICAL:** A professional alignment must be performed before driving this vehicle at highway speeds. Do not attempt to drive your vehicle after this install without having the alignment readjusted to factory specs.

Step 9 — Installing the new Elka rear shocks



- Remove upper and lower bolts from OEM shocks. Keep OEM bolts to install Elka shocks.
- **ADJUSTABLE SHOCKS MODEL:**
- LEFT SIDE; Install rear left shock with head to the top and the reservoir facing the rear of vehicle as shown by red arrow.
- RIGHT SIDE: Install rear right shock with head to the top and reservoir facing inside of vehicle as shown by blue arrow.
- Using an underhoist stand or a jack, lift rear axle to be able to install lower bolt.

Step 10 — Installing the rear shocks (continued)**● NON-ADJUSTABLE SHOCKS MODELS:**

- LEFT SIDE: Install rear left shock with the head to the top and the reservoir facing front of the vehicle as shown by yellow arrow..
- RIGHT SIDE: Install rear right shock with the head to the top and the reservoir facing the rear of vehicle as shown by green arrow.
- Using an underhoist stand or a jack, lift rear axle to be able to install lower bolt.
- Torque all bolts as manufacturer's specs.