

**Karat**<sup>®</sup>  
BY LOLLICUP<sup>™</sup>

2024—2025  
**ECO-FRIENDLY  
PRODUCT CATALOG**





Dear valued customers,

At Karat® by Lollicup™, our goal is to offer a wide selection of premium foodservice products that will work for your individual business operations. As a foodservice manufacturer and distributor, we understand how important **quality, affordability, and dependability** are to operate a business. We strive to ensure that our products and services help you maintain an innovative establishment and to provide you with the tools you need to grow. As you flourish, we will be right there with you!

*Our core values:*

## **Quality**

Karat® by Lollicup™ is committed to providing high quality premium products to suit our customers' unique needs, while continually working to expand our product offerings. Browse through our selection of product lines to find everything you need to keep your business running smoothly.

## **Affordability**

We offer competitive prices to meet your operational needs. Whether it is for a new or established business, we will find the best solutions for your budget. Enjoy flexible shipping options on multiple products without the need to purchase in bulk. Choose your preferred shipping method and warehouse location or take advantage of our will call and pick-up options.

## **Dependability**

Customer satisfaction is our top priority. We take great pride in providing excellent customer service before your order is placed through the time you receive it. We are here to help you with any special request, upcoming event, or any questions you may have.

We hope you find this material informative and our selection advantageous to your needs. Should you require specialty items or additional assistance, do not hesitate to give us a call.

Our best regards,

All of us at Karat® by Lollicup™

Karat® by Lollicup™ began its legacy in 2000, when entrepreneurs Alan Yu and Marvin Cheng opened the very first Lollicup boba shop in San Gabriel, California. Today, the company is a rapidly growing manufacturer and distributor of premium beverage and foodservice products. Karat by Lollicup is also the parent company to four brands: Karat®, Karat Earth®, Tea Zone® and Total Clean®. These brands highlight innovative new products that stay on trend and offer cost-effective high-quality foodservice products for small and large businesses across the United States.

We focus on business-to-business growth by cultivating established partnerships among industry leaders while providing exceptional support for all our customers. Karat® by Lollicup™ headquarters are located in Chino, California with additional locations in Texas, Washington, South Carolina, New Jersey, Illinois, and Hawaii to allow for quick and efficient service nationwide and beyond. Karat® by Lollicup™ operates on customer satisfaction and always strives for excellence.



## A Quick Reference

Please refer to the icon chart below to aid in your browsing.



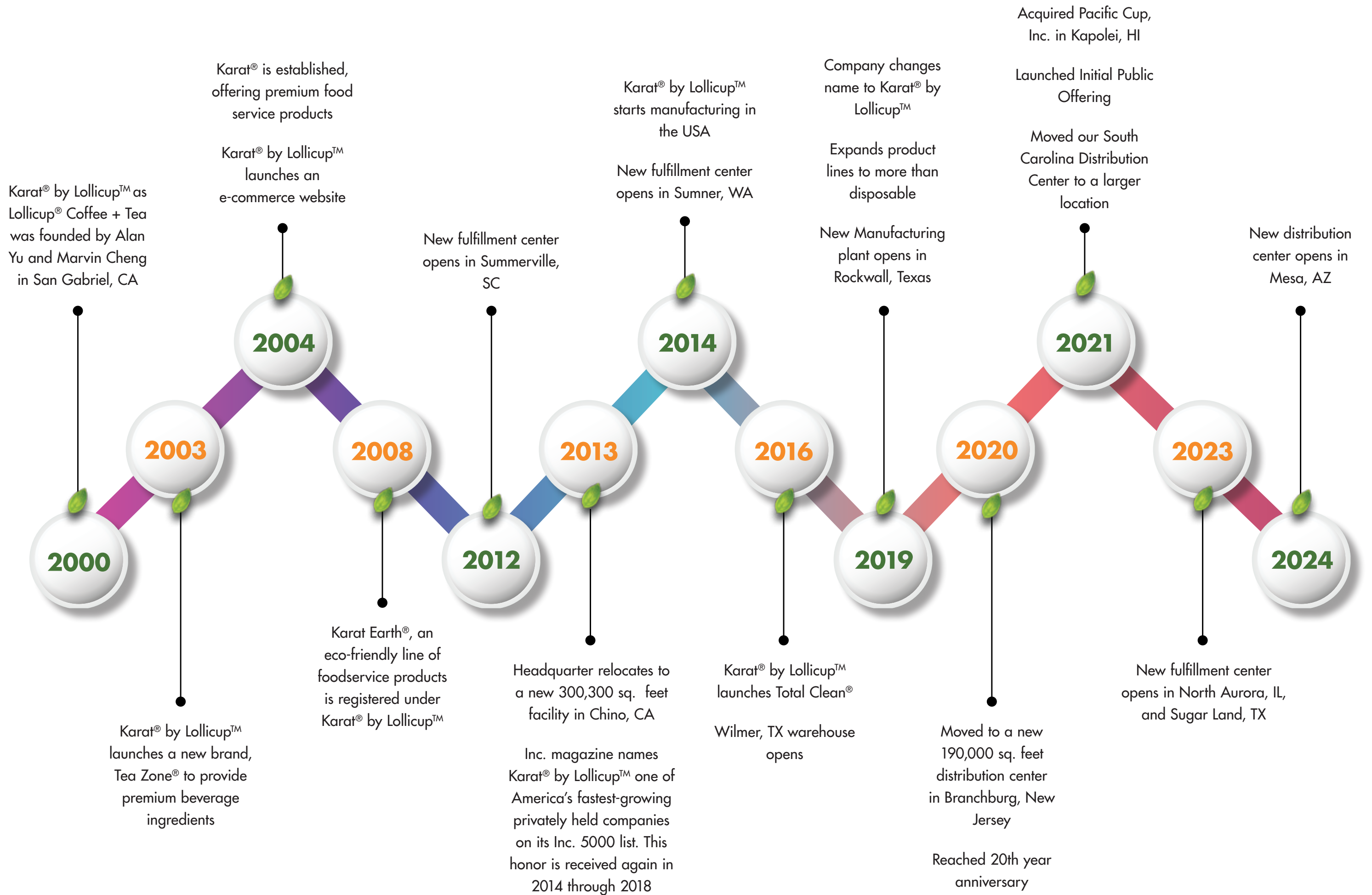
### Material Resin ID Codes



### Certifications

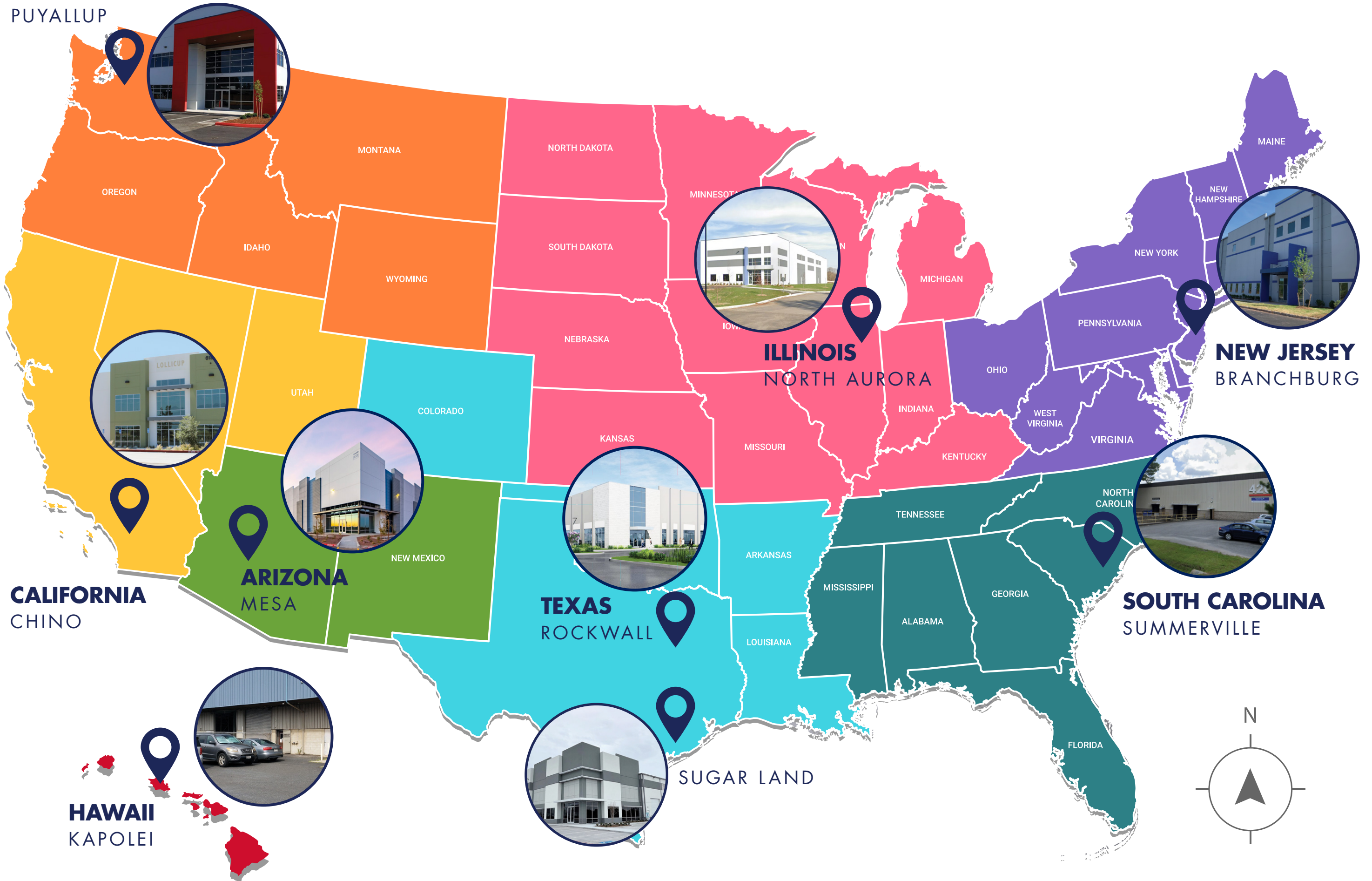


**PLA** POLYLACTIC ACID  
**CPLA** CRYSTALLIZED POLY LACTIC ACID





**WASHINGTON**  
PUYALLUP



**CALIFORNIA**  
CHINO

**ARIZONA**  
MESA

**TEXAS**  
ROCKWALL

**ILLINOIS**  
NORTH AURORA

**NEW JERSEY**  
BRANCHBURG

**SOUTH CAROLINA**  
SUMMERVILLE

**HAWAII**  
KAPOLEI

SUGAR LAND







Polylactic acid (PLA) is a thermoplastic derived from renewable resources. Common renewable resources used include corn starch, tapioca roots, or sugarcane. PLA is compostable where facilities exist.

## INGEO™ PLA ATTRIBUTES

**APPEARANCE** - Excellent gloss, transparency, and clarity for cups and containers

**VERSATILITY** - Easy to shape, mold, emboss and print, allowing endless branding opportunities

**FOOD PRESERVATION** - Provides exceptional barrier to keep flavors tasting fresh

**BPA FREE** - Derived from all natural resources and free of the harmful chemical Bisphenol (BPA)

### FACTS & ADVANTAGES OF PLA

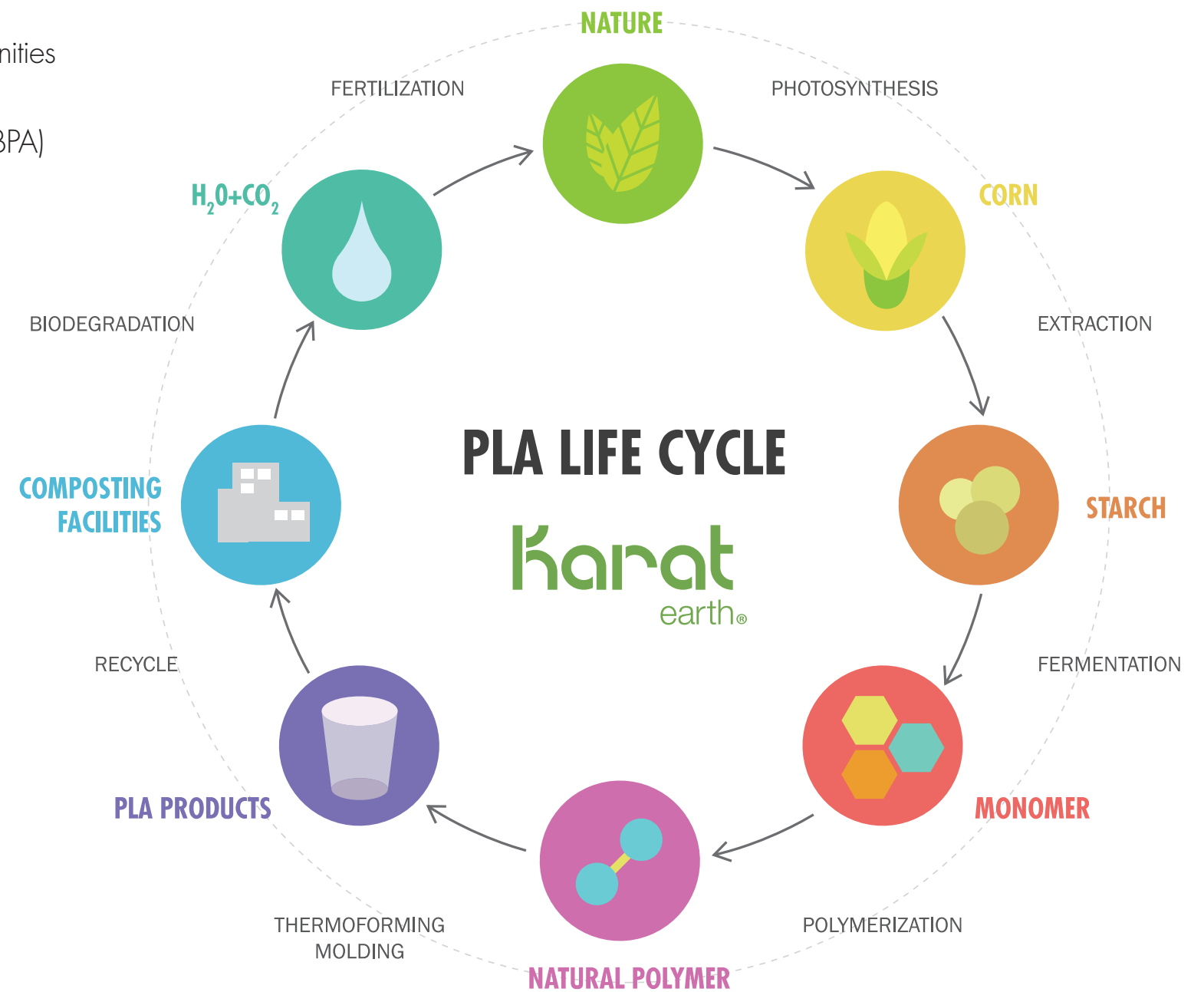
- 60% LESS** non-renewable energy used
- 80% LESS** greenhouse gases
- 100%** renewable resources (not oil)

## MAKE THE SWITCH!



Karat® Earth PLA products are made with NatureWorks® Ingeo™ PLA. Ingeo is a biopolymer that is manufactured using plant sugars from field corn and from any sugar source. Ingeo is not petroleum-based, so it is nonvolatile and odorless if incinerated. Make the choice today, for a better tomorrow.

## SELECT PRODUCTS HAVE CERTIFICATIONS BELOW:





# ECO-FRIENDLY PLA CUPS & LIDS

Make the world a greener place by switching to Karat Earth® PLA disposables. Karat Earth uses only NatureWorks® Ingeo™ PLA plastic derived from renewable resources. Karat Earth PLA cups and lids are available in standard cup and lid sizes, making them an easy alternative. Karat Earth PLA products are compostable in commercial facilities.

## ✓ Key Features

- Made from renewable resources
- Select items are BPI® and/or Cedar Grove® certified
- Durable and shatter-proof
- Compostable in commercial facilities
- Clear and stock print design
- Custom printing available

## PLA COLD CUPS



SIZE	RIM DIA. (mm)	CASE QTY	ITEM NO.
3 oz	62	2500/case	KE-KC3*
10 oz	78	1000/case	KE-KC10
12 oz	98	1000/case	KE-KC12
16 oz	98	1000/case	KE-KC16
20 oz	98	1000/case	KE-KC20
24 oz	98	600/case	KE-KC24
32 oz	107	300/case	KE-KC32

\*NOT BPI® or Cedar Grove® certified.

## PLA COLD CUPS Stock Print "ONE EARTH"



SIZE	RIM DIA. (mm)	CASE QTY	ITEM NO.
9 oz	92	1000/case	KE-KC9G
10 oz	78	1000/case	KE-KC10G
12 oz	98	1000/case	KE-KC12G
16 oz	98	1000/case	KE-KC16G
20 oz	98	1000/case	KE-KC20G
24 oz	98	600/case	KE-KC24G

## PLA FLAT LIDS for PLA COLD CUPS



DIA. (mm)	FITS (oz)	CASE QTY	ITEM NO.
78	10	1000/case	KE-KC78TS
98	12 - 24	1000/case	KE-KC626TS
98	12 - 24	1000/case	KE-KC626TS-NH*
107	32	500/case	KE-KC107TS

\*No Hole

## PLA STRAWLESS SIPPER LIDS for PLA COLD CUPS



DIA. (mm)	FITS (oz)	CASE QTY	ITEM NO.
98	12 - 24	1000/case	KE-KC626TS-SHNE



PLA DOME LIDS for PLA COLD CUPS



DIA. (mm)	FITS (oz)	CASE QTY	ITEM NO.
78	10	1000/case	KE-KDL78
98	12 - 24	1000/case	KE-KDL626
98	12 - 24	1000/case	KE-KDL626-NH*

\*No Hole

PLA DOME LIDS WIDE OPENING for PLA COLD CUPS



DIA. (mm)	FITS (oz)	CASE QTY	ITEM NO.
98	12 - 24	1000/case	KE-KDL626-WH

# ECO-FRIENDLY PAPER HOT CUPS & LIDS

Karat Earth® eco-friendly paper hot cups are perfect for any hot beverage, including coffee and tea. These cups are available in white or “One Earth” stock print. We have an assortment of sizes ranging from 4 oz. to 20 oz. so you can find the size that is perfect for your needs.

## ✓ Key Features

- Made from renewable resources
- Select items are BPI® and/or Cedar Grove® certified
- Compostable in commercial facilities
- Stock print design available
- Custom printing available

## ECO-FRIENDLY PAPER HOT CUPS “WHITE”



SIZE	RIM DIA. (mm)	CASE QTY	ITEM NO.
4 oz	62	1000/case	KE-K504W
8 oz	80	1000/case	KE-K508W
12 oz	90	1000/case	KE-K512W
16 oz	90	1000/case	KE-K516W
20 oz	90	600/case	KE-K520W

## ECO-FRIENDLY PAPER HOT CUPS Stock Print “ONE EARTH”



SIZE	RIM DIA. (mm)	CASE QTY	ITEM NO.
8 oz	80	1000/case	KE-K508
10 oz	90	1000/case	KE-K510
12 oz	90	1000/case	KE-K512
16 oz	90	1000/case	KE-K516
20 oz	90	600/case	KE-K520
24 oz	90	500/case	KE-K524

## ECO-FRIENDLY PAPER INSULATED HOT CUPS Stock Print “ONE EARTH”



SIZE	RIM DIA. (mm)	CASE QTY	ITEM NO.
8 oz	80	500/case	KE-KIC508
12 oz	90	500/case	KE-KIC512
16 oz	90	500/case	KE-KIC516

## PLA SIPPER DOME LIDS for PAPER HOT CUPS



DIA. (mm)	FITS (oz)	CASE QTY	ITEM NO.
80	8	1000/case	KE-KDL508
90	10 - 24	1000/case	KE-KDL516



**BAGASSE SIPPER DOME LIDS for PAPER HOT CUPS "PFAS FREE"**



DIA. (mm)	FITS (oz)	COLOR	CASE QTY	ITEM NO.
80	8	Natural	500/case	KE-BDL508N
90	10 - 24	Natural	500/case	KE-BDL516N
80	8	White	500/case	KE-BDL508W
90	10 - 24	White	500/case	KE-BDL516W

# ECO-FRIENDLY PAPER COLD CUPS & LIDS

Karat Earth® eco-friendly paper cold cups are lined with PLA on the interior and exterior to keep your beverages cold and protected against condensation. Karat Earth cold cups are perfect for fountain drinks, smoothies and more. They feature our “One Earth” stock print, and are available in 16 oz., 22 oz. and 32 oz. with matching lids.

## ✓ Key Features

- Made from renewable resources
- Select items are BPI® and/or Cedar Grove® certified
- PLA lined
- Stock design prints
- Compostable in commercial facilities
- Custom printing available

## ECO-FRIENDLY PAPER COLD CUPS Stock Print “ONE EARTH”



SIZE	RIM DIA. (mm)	CASE QTY	ITEM NO.
12 oz	90	1000/case	KE-KCP12
16 oz	90	1000/case	KE-KCP16
22 oz	90	1000/case	KE-KCP22
32 oz	104.5	600/case	KE-KCP32

## PLA FLAT LIDS for PAPER COLD CUPS



DIA. (mm)	FITS (oz)	CASE QTY	ITEM NO.
90	12 - 22	1000/case	KE-KCL90
104.5	32	600/case	KE-KCL1045
115	44	480/case	KE-KCL115

## COMPOSTABLE FIBER PAPER FLAT LIDS for PAPER COLD CUPS



DIA. (mm)	FITS (oz)	CASE QTY	ITEM NO.
90	12 - 22	1000/case	KE-KCL90-PPRW
104.5	32	600/case	KE-KCL1045-PPRW



Mix up your favorite, crafted beverages with our Karat Earth® Wooden Stirrers. Each stirrer is made from high-quality wood, a renewable resource that many eco-conscious customers would appreciate. Simply add all your favorite ingredients to your drink and stir!

**✓ Key Features**

- Made from wood, a renewable resource
- Easy to use
- Unwrapped and paper-wrapped available

**WOODEN STIR STICKS  
"COFFEE SUPPLIES"**



LENGTH (in)	WRAPPER	CASE QTY	ITEM NO.
5.5"	-	5000 (10x500)	KE-C9900
7.5"	-	5000 (10x500)	KE-C9905
5.5"	Paper	5000 (10x500)	KE-C9950
7.5"	Paper	5000 (10x500)	KE-C9955

# ECO-FRIENDLY PAPER SCOOP CUPS

Karat Earth® Eco-Friendly Paper Scoop Cup is a perfect way to serve various finger foods such as fries, mozzarella sticks, and onion rings. The round shape and wide opening make serving and carrying accessible for both staff and consumers. This 5.5 oz scoop is ideal for all your snack needs. Not only is this paper scoop convenient, but it's also environmentally friendly resulting in less waste.

## ✓ Key Features

- Made from renewable and compostable resources
- 100% compostable in commercial facilities
- BPI® Certified

## ECO-FRIENDLY PAPER SCOOP CUP "GENERIC ONE EARTH PRINT"



SIZE	CASE QTY	ITEM NO.
5.5 oz	1000/case	KE-PSC550



Karat Earth® offers a variety of PLA and Paper straws in different lengths and sizes to sip from any cup or beverage. PLA is a renewable resource that can be composted back into the environment. In an effort to be more eco-friendly Karat Earth straws are an eco-friendly alternative to standard plastic straws.

**✓ Key Features**

- Made from renewable resources
- Compostable in commercial facilities
- Variety of sizes and lengths available



**ECO-FRIENDLY PAPER STRAWS**



LENGTH (in)	SIZE	WRAPPER	COLOR(S)	CASE QTY	ITEM NO.
5.25"	Stir	-	White	5000 (10x500) pcs/case	KE-C9450W
5.25"	Stir	-	Black/White Spiral	5000 (10x500) pcs/case	KE-C9451
5.25"	Stir	-	Red/White Spiral	5000 (10x500) pcs/case	KE-C9452
7.75"	Jumbo	Paper	White	2000 (4x500) pcs/case	KE-C9300W
10.25"	Jumbo	Paper	White	1200 (4x300) pcs/case	KE-C9305W
9"	Jumbo	Paper	White	1200 (4x300) pcs/case	KE-C9320W
7.75"	Giant	Paper	White	2000 (4x500) pcs/case	KE-C9330W
9"	Giant	Paper	White	1200 (4x300) pcs/case	KE-C9340W
9"	Giant	Paper	Red/White Spiral	1200 (4x300) pcs/case	KE-C9343
10.25"	Giant	Paper	White	1200 (4x300) pcs/case	KE-C9335W
10.25"	Giant	Paper	Blue/White Spiral	1200 (4x300) pcs/case	KE-C9337
10.25"	Giant	Paper	Red/White Spiral	1200 (4x300) pcs/case	KE-C9338
9"	Colossal	Paper	White	1600 (40x40) pcs/case	KE-C9350W

**ECO-FRIENDLY PAPER STRAWS "KRAFT"**



LENGTH (in)	SIZE	WRAPPER	COLOR(S)	CASE QTY	ITEM NO.
7.75 "	Jumbo	Paper	Kraft	2000 (4x500) pcs/case	KE-C9300K
10.25 "	Jumbo	Paper	Kraft	1200 (4x300) pcs/case	KE-C9305K
7.75 "	Giant	Paper	Kraft	2000 (4x500) pcs/case	KE-C9330K
10.25 "	Giant	Paper	Kraft	1200 (4x300) pcs/case	KE-C9335K

**ECO-FRIENDLY PLA STRAWS**



LENGTH (in)	SIZE	WRAPPER	COLOR(S)	CASE QTY	ITEM NO.
7.75 "	Jumbo	Paper	Clear	2000 (4x500) pcs/case	KE-C9210
7.75 "	Jumbo	-	Clear	2000 (4x500) pcs/case	KE-C9215
9.5 "	Jumbo	Paper	Clear	4800 (16x300) pcs/case	KE-C9200
9.5 "	Jumbo	Paper	Green	4800 (16x300) pcs/case	KE-C9200 (Green)
9.5 "	Jumbo	Paper	Red	4800 (16x300) pcs/case	KE-C9200 (Red)
8.75"	Giant	Paper	Clear	2500 (5x500) pcs/case	KE-C9230
8.75"	Giant	Paper	Green	2500 (5x500) pcs/case	KE-C9230 (Green)
10.25"	Giant	Paper	Clear	1200 (4x300) pcs/case	KE-C9235
7.75 "	Giant	Paper	Clear	2000 (4x500) pcs/case	KE-C9240
9"	Colossal	Paper	Clear	1600 (16x100) pcs/case	KE-C9260
9"	Giant	Paper	Black	2500 (5x500) pcs/case	KE-C9230 (Black)

## ECO-FRIENDLY BAMBOO FIBER STRAWS



LENGTH (in)	CUT	WRAPPER	COLOR(S)	CASE QTY	ITEM NO.
9"	Diagonal	Paper	Natural	4000 (20x200) pcs/case	KE-C9800
9"	Diagonal	Paper	Natural	3000 (20x150) pcs/case	KE-C9830
9"	Diagonal	Paper	Natural	1600 (20x80) pcs/case	KE-C9850
9"	Flat	Paper	Natural	4000 (20x200) pcs/case	KE-C9801
9"	Flat	Paper	Natural	3000 (20x150) pcs/case	KE-C9831
5.5"	Flat	Paper	Natural	7000 (28x250) pcs/case	KE-C9875



Karat Earth® eco-friendly food containers are made from renewable resources and feature an interior PLA lining to help protect against condensation and heat. These containers are designed to hold hot or cold foods and are perfect for side dishes, pastas, ice cream and more! Choose between white or our “One Earth” stock print.

## ✓ Key Features

- Made from renewable resources
- BPI® and/or Cedar Grove® certified
- Compostable in commercial facilities
- PLA lined
- Used with hot and cold food

## ECO-FRIENDLY PAPER FOOD CONTAINERS “WHITE”



SIZE	RIM DIA. (mm)	CASE QTY	ITEM NO.
4 oz	75.3	1000/case	KE-KDP4W
6 oz	90.8	1000/case	KE-KDP6W
8 oz	90.8	1000/case	KE-KDP8W
10 oz	90.8	1000/case	KE-KDP10W
12 oz	114.6	500/case	KE-KDP12W
16 oz	114.6	500/case	KE-KDP16W

## ECO-FRIENDLY PAPER FOOD CONTAINERS Stock Print “ONE EARTH”



SIZE	RIM DIA. (mm)	CASE QTY	ITEM NO.
4 oz	75.3	1000/case	KE-KDP4
8 oz	90.8	1000/case	KE-KDP8
12 oz	114.6	500/case	KE-KDP12
16 oz	114.6	500/case	KE-KDP16

## ECO-FRIENDLY PAPER FOOD CONTAINERS “GENERIC”



SIZE	RIM DIA. (mm)	CASE QTY	ITEM NO.
6 oz	90.8	1000/case	KE-KDP6
10 oz	90.8	1000/case	KE-KDP10

## ECO-FRIENDLY GOURMET PAPER FOOD CONTAINERS “GENERIC”



SIZE	RIM DIA. (mm)	CASE QTY	ITEM NO.
24 oz	114.6	1000/case	KE-GFC24*
32 oz	114.6	1000/case	KE-GFC32*

\*Can be used with PLA Food Container lids (KE-KDL114) & Compostable Fiber Paper Flat Lid (KE-KDL115-PPRW)

## PLA LIDS for PAPER FOOD CONTAINERS



DIA. (mm)	FITS (oz)	CASE QTY	ITEM NO.
90	4	1000/case	KE-KDL75
90.8	8	1000/case	KE-KDL90
114.6	12 - 16 24 - 32*	500/case	KE-KDL114

\*Can be used with Gourmet Paper Food Container (KE-GFC24 & KE-GFC32)

## COMPOSTABLE FIBER PAPER FLAT LIDS & ECO-FRIENDLY PAPER COLD/HOT FOOD CONTAINER



DIA. (mm)	FITS (oz)	CASE QTY	ITEM NO.
127	20	600/case	KE-KDL127-PPRW
142	24 - 32	600/case	KE-KDL142-PPRW

## COMPOSTABLE FIBER PAPER FLAT LIDS & ECO-FRIENDLY PAPER FOOD CONTAINERS



DIA. (mm)	FITS (oz)	CASE QTY	ITEM NO.
75.3	6-10	1000/case	KE-KDL90-PPRW
114.6	12 - 16 24 - 32*	500/case	KE-KDL115-PPRW

\*Can be used with Gourmet Paper Food Container (KE-GFC24 & KE-GFC32)



Karat Earth® Bamboo Food Trays are perfect for appetizers, finger foods, snacks, and side dishes. These trays are also recyclable and compostable in commercial facilities. Available in various sizes for an eco-friendly solution to all food service needs.

**✓ Key Features**

- Recyclable
- Compostable in commercial facilities
- Various sizes available

**BAMBOO FOOD TRAY  
"ONE EARTH"**



SIZE	CASE QTY	ITEM NO.
4.7" x 3.2" x 1.2"	1000/case	KE-FT050N
5" x 3.7" x 1.5"	1000/case	KE-FT100N
6" x 4" x 1.5"	1000/case	KE-FT200N
6.7" x 4.7" x 1.7"	500/case	KE-FT250N
7.5" x 5" x 2"	500/case	KE-FT300N
8.5" x 5.8" x 2"	500/case	KE-FT500N

# ECO-FRIENDLY PLA HINGED CONTAINERS

Karat Earth® PLA hinged containers will secure your to-go orders and help make a positive impact on the environment. These eco-friendly hinged containers are made out of PLA which is a renewable resource that can be composted back into the earth. Karat Earth hinged containers are available in multiple sizes allowing customers to take any meal to-go. Karat Earth hinged containers are available in multiple sizes allowing customers to take any meal to-go.

## ✓ Key Features

- One compartment
- Made from renewable resources
- One compartment

## PLA HINGED CONTAINERS



SIZE	CASE QTY	ITEM NO.
6" x 6"	500/case	KE-HC66PLA-1C
8" x 8"	250/case	KE-HC88PLA-1C
9" x 5"	250/case	KE-HC95PLA-1C
9" x 9"	200/case	KE-HC99PLA-1C

## PLA HINGED DELI CONTAINERS



SIZE	CASE QTY	ITEM NO.
8 oz	200/case	KE-HDC8
12 oz	200/case	KE-HDC12
16 oz	200/case	KE-HDC16
24 oz	200/case	KE-HDC24
32 oz	200/case	KE-HDC32



Provide an excellent take-out experience with our Karat Earth® Mineral Filled PP Hinged Containers. Mineral filled food containers cut down on the use of plastic by blending plastic material with up to 50% of mineral content. They are microwaveable and have a heat tolerance of up to 250° F (121° C). Each container is stackable, soak-resistant, with an audible click to indicate secure closing.

## ✓ Key Features

- Available in multiple sizes and styles
- Stackable, soak-resistant, and microwaveable
- Available in multiple sizes and styles

## MINERAL FILLED PP HINGED CONTAINERS "WHITE"



SIZE	COMPARTMENT	CASE QTY	ITEM NO.
6"x 6"	1	400/case	KE-HC66MFPP-1CW
8"x 8"	1	200/case	KE-HC88MFPP-1CW
9"x 6"	1	250/case	KE-HC96MFPP-1CW
9"x 9"	1	120/case	KE-HC99MFPP-1CW
8"x 8"	3	200/case	KE-HC88MFPP-3CW
9"x 9"	3	120/case	KE-HC99MFPP-3CW

## MINERAL FILLED PP HINGED CONTAINERS "BLACK"



SIZE	COMPARTMENT	CASE QTY	ITEM NO.
6"x 6"	1	400/case	KE-HC66MFPP-1CB
8"x 8"	1	200/case	KE-HC88MFPP-1CB
9"x 6"	1	250/case	KE-HC96MFPP-1CB
9"x 9"	1	120/case	KE-HC99MFPP-1CB
8"x 8"	3	200/case	KE-HC88MFPP-3CB
9"x 9"	3	120/case	KE-HC99MFPP-3CB

# ECO-FRIENDLY PLA ROUND DELI CONTAINERS & LIDS

Karat Earth® compostable deli containers are made from PLA plastic, a renewable resource made from the starches of corn, sugarcane, cassava or beetroot plants. PLA plastic is clear allowing for easy visibility of contents and is durable and shatterproof. These containers have a temperature tolerance of 122°F (50°C) and are great for storing salads, noodles, or many other foods. PLA deli containers are a great eco-friendly option for your food packaging needs!

## ✓ Key Features

- Durable and shatterproof
- Made from renewable resources
- Compostable in commercial facilities

## PLA ROUND DELI CONTAINERS



SIZE	RIM DIA. (mm)	CASE QTY	ITEM NO.
8 oz	117	500/case	KE-DC8-PLA
12 oz	117	500/case	KE-DC12-PLA
16 oz	117	500/case	KE-DC16-PLA
24 oz	117	500/case	KE-DC24-PLA
32 oz	117	500/case	KE-DC32-PLA
8-32 oz	117	500/case	KE-DCL117-PLA

Karat Earth® Paper Paper Portion Cups offer a convenient way to carry sauces, sides, and salsas on-the-go, all while minimizing your ecological footprint. These cups are crafted from compostable, plant-based materials, making them an eco-friendly choice for packaging your favorite condiments and side dishes. To enhance their durability and resistance to grease, the cups are lined with PLA.

**✓ Key Features**

- Plant-Based Compostable Material
- Sustainable
- Grease-Resistant

**PAPER PORTION CUPS**



SIZE	RIM DIA. (mm)	CASE QTY	ITEM NO.
2 oz	62	2000/case	KE-P200-PPRW
4 oz	75	1000/case	KE-P400-PPRW

**CPLA LIDS for PAPER PORTION CUPS**



DIA. (mm)	FITS	CASE QTY	ITEM NO.
62	2 oz	2000/case	KE-KDL62
75.3	4 oz	1000/case	KE-KDL75



# BAGASSE HINGED CONTAINERS

Karat Earth® Bagasse products are a sustainable and environmentally-friendly alternative to traditional products that contain PFAS. Made from leftover fibers from the sugar extraction process, bagasse is a durable material that can be used for all types of food packaging. Not only is it safe for your health, but it also helps to preserve the health of the planet.

## ✓ Key Features

- Eco-Friendly
- Compostable in commercial facilities
- Durable

## BAGASSE HINGED CONTAINERS "PFAS FREE"



SIZE	COMPARTMENT	CASE QTY	ITEM NO.
9" x 9"	1	200/case	KE-BHC99-1CFF

## BAGASSE HINGED CONTAINERS "PFAS FREE"



SIZE	COMPARTMENT	CASE QTY	ITEM NO.
9" x 9"	3	200/case	KE-BHC99-3CFF

## BAGASSE HINGED CONTAINERS NATURAL "PFAS FREE"



SIZE	COMPARTMENT	CASE QTY	ITEM NO.
6" x 6"	1	500/case	KE-BHC66N-1CFF
8" x 8"	1	200/case	KE-BHC88N-1CFF
9" x 6"	1	200/case	KE-BHC96N-1CFF
9" x 9"	1	200/case	KE-BHC99N-1CFF

## BAGASSE HINGED CONTAINERS NATURAL "PFAS FREE"



SIZE	COMPARTMENT	CASE QTY	ITEM NO.
8" x 8"	3	200/case	KE-BHC88N-3CFF
9" x 9"	3	200/case	KE-BHC99N-3CFF

**BAGASSE ROUND PLATES  
NATURAL "PFAS FREE"**



SIZE	COMPARTMENT	CASE QTY	ITEM NO.
6"	1	1000/case	KE-BPRO6N-1CFF
7"	1	1000/case	KE-BPRO7N-1CFF
9"	1	500/case	KE-BPRO9N-1CFF
10"	1	500/case	KE-BPR10N-1CFF

**BAGASSE ROUND PLATES  
NATURAL "PFAS FREE"**



SIZE	COMPARTMENT	CASE QTY	ITEM NO.
9"	3	500/case	KE-BPRO9N-3CFF
10"	3	500/case	KE-BPR10N-3CFF

**BAGASSE SQUARE PLATES  
WHITE "PFAS FREE"**



SIZE	COMPARTMENT	CASE QTY	ITEM NO.
6" x 6"	1	500/case	KE-BPS06-1CFF
8" x 8"	1	500/case	KE-BPS08-1CFF
10" x 10"	1	500/case	KE-BPS10-1CFF

# BAGASSE BOWLS

## BAGASSE ROUND BOWLS NATURAL "PFAS FREE"



SIZE	COMPARTMENT	CASE QTY	ITEM NO.
24 oz	1	500/case	KE-BBR24N-FF
28 oz	1	500/case	KE-BBR28N-FF
32 oz	1	500/case	KE-BBR32N-FF
40 oz	1	500/case	KE-BBR40N-FF

## BAGASSE ROUND BOWL WHITE "PFAS FREE"



SIZE	COMPARTMENT	CASE QTY	ITEM NO.
12 oz	1	1000/case	KE-BBR12-1CFF

## BAGASSE ROUND RICE/SALAD BOWL WHITE "PFAS FREE"



SIZE	COMPARTMENT	CASE QTY	ITEM NO.
8 oz	1	1000/case	KE-BRB08-FF
12 oz	1	1000/case	KE-BRB12-FF
16 oz	1	1000/case	KE-BRB16-FF
32 oz	1	500/case	KE-BRB32-FF

## BAGASSE SQUARE BOWLS NATURAL "PFAS FREE"



SIZE	COMPARTMENT	CASE QTY	ITEM NO.
24 oz	1	300/case	KE-BBS24N-FF
32 oz	1	300/case	KE-BBS32N-FF
48 oz	1	300/case	KE-BBS48N-FF

## PET DOME LID for BAGASSE SQUARE BOWLS



FITS	CASE QTY	ITEM NO.
24/32/48 Square Bowl	300/case	FP-KDL221-PET

## BAGASSE ROUND BOWLS NATURAL "PFAS FREE"



SIZE	COMPARTMENT	CASE QTY	ITEM NO.
28 oz	1	300/case	KE-BBB28-FF*

\*Burrito Bowl Lids on Page 32.



**BAGASSE TRAYS  
WHITE "PFAS FREE"**



SIZE	COMPARTMENT	CASE QTY	ITEM NO.
10" x 8"	5	100/case	KE-BT108-5CFF (100)
10" x 8"	5	400/case	KE-BT108-5CFF (400)

# COMPOSTABLE BAGASSE CONTAINERS

Karat Earth® bagasse containers and dinnerware are great for holding all of your delicious foods, including hot and cold items. The containers are made with bagasse, which consists of fibers left over from the sugar extraction process of sugarcane. These fibers are strong, durable, and a great source of sustainable material for food packaging. BPI® Certified hinged containers, plates, and bowls are all available!

## ✓ Key Features

- Made from renewable resources
- Durable, sturdy, and microwavable
- Select items are BPI® certified
- Compostable in commercial facilities
- Various sizes and designs available

## COMPOSTABLE BAGASSE CONTAINERS



SIZE	COMPARTMENT	CASE QTY	ITEM NO.
6" x 6"	1	500/case	KE-BHC66-1C
8" x 8"	1	200/case	KE-BHC88-1C
9" x 6"	1	200/case	KE-BHC96-1C
9" x 9"	1	200/case	KE-BHC99-1C

## COMPOSTABLE BAGASSE CONTAINERS



SIZE	COMPARTMENT	CASE QTY	ITEM NO.
8" x 8"	3	200/case	KE-BHC88-3C
9" x 9"	3	200/case	KE-BHC99-3C

**COMPOSTABLE BAGASSE  
ROUND PLATES**



SIZE	COMPARTMENT	CASE QTY	ITEM NO.
6"	1000/case	1000/case	KE-BPRO6-1C
7"	1000/case	1000/case	KE-BPRO7-1C
9"	500/case	500/case	KE-BPRO9-1C
10"	500/case	500/case	KE-BPR10-1C

**PET DOME LIDS for  
BAGASSE ROUND PLATES**



SIZE	FITS	CASE QTY	ITEM NO.
9"	KE-BPRO9-1C	200/case	FP-KDL228-PET

**COMPOSTABLE BAGASSE  
ROUND PLATES**



SIZE	COMPARTMENT	CASE QTY	ITEM NO.
9"	3	500/case	KE-BPRO9-3C
10"	3	500/case	KE-BPR10-3C

**COMPOSTABLE BAGASSE  
OVAL PLATES**



SIZE	COMPARTMENT	CASE QTY	ITEM NO.
10" x 8"	1	500/case	KE-BPO108-1C*
12.5" x 10"	1	500/case	KE-BPO12510-1C

\*NOT BPI® certified compostable.



# COMPOSTABLE BAGASSE BOWLS

## COMPOSTABLE BAGASSE BOWLS



SIZE	COMPARTMENT	CASE QTY	ITEM NO.
12 oz round	1	1000/case	KE-BBR12-1C
24 oz wide	1	500/case	KE-BBW24
32 oz wide	1	500/case	KE-BBW32

## COMPOSTABLE BAGASSE RICE/SALAD BOWLS



SIZE	COMPARTMENT	CASE QTY	ITEM NO.
8 oz round	1	1000/case	KE-BRB08
12 oz round	1	1000/case	KE-BRB12
16 oz round	1	1000/case	KE-BRB16
32 oz round	1	500/case	KE-BRB32

**NATURAL BAGASSE CONTAINERS**



SIZE	COMPARTMENT	CASE QTY	ITEM NO.
6" x 6"	1	500/case	KE-BHC66N-1C
8" x 8"	1	200/case	KE-BHC88N-1C
9" x 6"	1	200/case	KE-BHC96N-1C
9" x 9"	1	200/case	KE-BHC99N-1C

**NATURAL BAGASSE CONTAINERS**



SIZE	COMPARTMENT	CASE QTY	ITEM NO.
8" x 8"	3	200/case	KE-BHC88N-3C

# NATURAL BAGASSE PLATES

## NATURAL BAGASSE PLATES



SIZE	COMPARTMENT	CASE QTY	ITEM NO.
6"	1	1000/case	KE-BPR06N-1C
7"	1	1000/case	KE-BPR07N-1C
9"	1	500/case	KE-BPR09N-1C
10"	1	500/case	KE-BPR10N-1C

## NATURAL BAGASSE PLATES



SIZE	COMPARTMENT	CASE QTY	ITEM NO.
9"	3	500/case	KE-BPR09N-3C
10"	3	500/case	KE-BPR10N-3C



## NATURAL BAGASSE BOWLS



SIZE	COMPARTMENT	CASE QTY	ITEM NO.
12 oz wide	1	1000/case	KE-BBR12N-1C
24 oz	1	500/case	KE-BBR24N
32 oz	1	500/case	KE-BBR32N
40 oz	1	500/case	KE-BBR40N

## PET DOME LIDS for BAGASSE BOWLS



FITS	CASE QTY	ITEM NO.
24/32/40 oz Natural Bowl	200/case	FP-KDL204-PET
24/32 oz Wide Bowl	200/case	FP-KDL211-PET
28 oz Burrito Bowl	300/case	FP-KDL1065-PET*
32 oz Bagasse Rice/Salad Bowl	200/case	FP-KDL183-PET*

\*Burrito Bowl on Page 25. Bagasse Rice/Salad Bowl on Page 29.

# BAGASSE TAKE OUT BOWLS & LIDS

Karat Earth® Bagasse Take Out containers are the eco-friendly alternative to plastic bowls. These sustainably resourced bowls are perfect for everything from rice bowls to noodles to breakfast bowls and more while making a positive impact on the Earth. Customers will appreciate these biodegradable containers!

## ✓ Key Features

- Made from sustainably resourced material
- Compostable and biodegradable
- Microwavable
- Matching bowl and lid sold separately

### NATURAL BAGASSE TAKE OUT BOWL "ROUND"



SIZE	COMPARTMENT	CASE QTY	ITEM NO.
16 oz	1	500/case	KE-BTB16N
20 oz	1	500/case	KE-BTB20N
24 oz	1	500/case	KE-BTB24N

### NATURAL BAGASSE TAKE OUT BOWL "RECTANGLE"



SIZE	COMPARTMENT	CASE QTY	ITEM NO.
16 oz	1	500/case	KE-BTC16N
20 oz	1	500/case	KE-BTC20N
24 oz	1	500/case	KE-BTC24N

### FLAT LIDS for NATURAL BAGASSE TAKE OUT BOWL "ROUND"



FITS	CASE QTY	ITEM NO.
16 - 24 oz	500/case	KE-BTBL166N

### FLAT LIDS for NATURAL BAGASSE TAKE OUT BOWL "RECTANGLE"



FITS	CASE QTY	ITEM NO.
16 - 24 oz	500/case	KE-BTCL01N

Karat Earth® Bamboo Skewers & Picks are made from natural bamboo material and come in a variety of styles and sizes. They are a kitchen essential that can be used to serve bite-sized appetizers, garnish a martini, create mini kebabs and much more! Match the style of your restaurant or event with a selection of rustic loops, lovely hearts, or natural minimalist.

**BAMBOO SKEWERS "KNOT"**



SIZE	CASE QTY	ITEM NO.
4"	5000/case	KE-U6014
7"	5000/case	KE-U6017

**BAMBOO SKEWERS "PADDLE"**



SIZE	CASE QTY	ITEM NO.
3.5"	5000/case	KE-U6033
6"	5000/case	KE-U6036

**BAMBOO SKEWERS "HEART LOOPED"**



SIZE	CASE QTY	ITEM NO.
6"	5000/case	KE-U6026

**BAMBOO PICKS**



SIZE	CASE QTY	ITEM NO.
3.5"	5000/case	KE-U6113
6"	5000/case	KE-U6116

# ECO-FRIENDLY UTENSILS

Karat Earth® eco-friendly utensils are great for hot and cold foods and make a positive impact on our environment. Select from bio-based, PLA or CPLA materials that all provide a sturdy environmentally-friendly option when it comes to cutlery. PLA utensils are compostable in a commercial facility, while our bio-based spoons can be recycled at participating locations.

## ✓ Key Features

- Select items are BPI® certified
- Made from renewable resources
- Compostable in commercial facilities
- Various colors available

### PLA UTENSILS MEDIUM HEAVY WEIGHT



COLOR	TYPE	CASE QTY	ITEM NO.
Natural	Fork	100pcs/bag, 10bags/case	KE-U4200 (Natural)
Natural	Knife	100pcs/bag, 10bags/case	KE-U4201 (Natural)
Natural	Tea Spoon	100pcs/bag, 10bags/case	KE-U4203 (Natural)

\*Not recommended for temperatures over 176°F

### PLA UTENSILS HEAVY WEIGHT



COLOR	TYPE	CASE QTY	ITEM NO.
Natural	Fork	100pcs/bag, 10bags/case	KE-U4510 (Natural)
Natural	Knife	100pcs/bag, 10bags/case	KE-U4511 (Natural)
Natural	Tea Spoon	100pcs/bag, 10bags/case	KE-U4513 (Natural)

\*Not recommended for temperatures over 176°F

### CPLA COMPOSTABLE UTENSILS MEDIUM HEAVY WEIGHT "WRAPPED"



COLOR	TYPE	CASE QTY	ITEM NO.
White	Spork	750pcs/case	KE-U3205W

\*Not recommended for temperatures over 176°F

### CPLA COMPOSTABLE UTENSILS HEAVY WEIGHT "WRAPPED"



COLOR	TYPE	CASE QTY	ITEM NO.
White	Fork	750pcs/case	KE-U3400W
White	Knife	750pcs/case	KE-U3401W
White	Tea Spoon	750pcs/case	KE-U3403W
White	Cutlery Kits	250 sets/case	KE-U3600W

\*Not recommended for temperatures over 176°F

### BIO-BASED NATURAL UTENSILS HEAVY WEIGHT



COLOR	TYPE	CASE QTY	ITEM NO.
Natural	Fork	100pcs/bag, 10bags/case	KE-U2020
Natural	Knife	100pcs/bag, 10bags/case	KE-U2021
Natural	Soup Spoon	100pcs/bag, 10bags/case	KE-U2022
Natural	Tea Spoon	100pcs/bag, 10bags/case	KE-U2023



BIO-BASED NATURAL UTENSILS  
HEAVY WEIGHT "WRAPPED"



COLOR	TYPE	CASE QTY	ITEM NO.
Natural	Fork	100pcs/bag, 10bags/case	KE-U2030
Natural	Knife	100pcs/bag, 10bags/case	KE-U2031
Natural	Tea Spoon	100pcs/bag, 10bags/case	KE-U2033

BIO-BASED UTENSILS  
HEAVY WEIGHT "BLACK"



COLOR	TYPE	CASE QTY	ITEM NO.
Black	Fork	100pcs/bag, 10bags/case	KE-U2020B
Black	Knife	100pcs/bag, 10bags/case	KE-U2021B
Black	Soup Spoon	100pcs/bag, 10bags/case	KE-U2022B
Black	Tea Spoon	100pcs/bag, 10bags/case	KE-U2023B

BAGASSE UTENSILS  
PAPER WRAPPED "PFAS FREE"



COLOR	TYPE	CASE QTY	ITEM NO.
Natural	Spoon	750pcs/case	KE-BU5023
Natural	Cutlery Kits	250 sets/case	KE-BU5100

BIO-BASED COLORED SPOONS  
HEAVY WEIGHT



COLOR	TYPE	CASE QTY	ITEM NO.
Red	Spoon	100pcs/bag, 10bags/case	KE-U2300 (Red)
Orange	Spoon	100pcs/bag, 10bags/case	KE-U2300 (Orange)
Green	Spoon	100pcs/bag, 10bags/case	KE-U2300 (Green)
Teal Blue	Spoon	100pcs/bag, 10bags/case	KE-U2300 (Blue)
Lavender Purple	Spoon	100pcs/bag, 10bags/case	KE-U2300 (Purple)
Pink	Spoon	100pcs/bag, 10bags/case	KE-U2300 (Pink)
Mixed	Spoon	100pcs/bag, 10bags/case	KE-U2300 (Rainbow)*

\*Not recommended for temperatures over 176°F

WOODEN UTENSILS  
HEAVY WEIGHT



COLOR	TYPE	CASE QTY	ITEM NO.
Wood	Fork	100pcs/bag, 10bags/case	KE-U8000
Wood	Knife	100pcs/bag, 10bags/case	KE-U8001
Wood	Spoon	100pcs/bag, 10bags/case	KE-U8003
Wood	Tea Spoon	100pcs/bag, 10bags/case	KE-U8005



With fast turnaround times and high-quality printing, you can easily advertise your business by letting your brand be the next conversation starter. Customize all your foodservice products by printing your logo or a design on your paper cups, food containers, and more. Read the details below on our custom printing process and let us help you take your branding and marketing efforts to the next level!

## 💧 Understanding the Different Printing Methods & Colors

### Offset Lithography

- » This is a standard printing process that uses water and/or oil to keep ink out of non printing areas on the plate.
- » The term offset comes from the fact that the ink design is transferred, or offset, onto something else before it goes onto the printed material.
- » Offset Lithography is for paper printing and can print both CMYK and Spot Colors.

VS

### Flexography & Dry Offset

- » Flexography printing works very much like a typical rubber stamp.
- » Flexible plates are rolled in ink and then transferred onto the final piece.
- » This printing method can be used for paper, plastic, or any special substrates.
- » Flexography can only use spot colors.
- » Dry Offset works a lot like Flexography but the ink is transferred or onto another roller before it goes onto the final product.

### CMYK Printing: (4 color process)

- » This term refers to a printing process that uses a mixture of Cyan, Magenta, Yellow, and Black (CMYK) to reproduce a wide range of colors.
- » A wide range of colors can be printed with just 4 color plates, so the number of colors allowable on each design is much higher.
- » PANTONE® (PMS) color codes can be provided as a final color reference, but not all PANTONE® (PMS) colors can be reproduced accurately.

VS

### Spot Color Printing

- » This term refers to a printing process that uses pre-mixed ink for each color. This limits the number of colors but ensures greater color accuracy.
- » The industry standard for spot colors is the PANTONE® Matching System (PMS) and will be used for all spot colors.
- » Due to the use of food-grade inks, not all PANTONE® colors can be achieved.
- » PANTONE® colors will vary on finished products depending on the material and may vary across multiple materials.

## Software/File Formats & Requirements



### **.AI, .EPS, or .PDF (Preferred Formats)**

- Shapes and fonts must be outlined
- Artwork elements must be in layers, not merged



### **Images (if any)**

- All images embedded
- Images must be at least 300 dpi or higher
- Images can only be printed on paper products



### **All Text and Fonts**

- Font size must be at least 8 pt
- Font files must be included with submission or outlined

### **Colors**

- Define all colors CMYK or PANTONE® Solid Coated/Uncoated Color Code.

### **What if I don't have any of these?**

If your artwork is designed in another program (e.g. Corel Draw), please save it as a high resolution PDF or EPS file.

### **What if I don't have any programs?**

If there is no way to provide us with artwork, we can provide you with in-house design service. Please contact us for further details. Minimal design fees may be applicable. If there is no way to provide us with artwork, we can provide you with in-house design service. Please contact us for further details. Minimal design fees may be applicable.

## Templates/Lines

Templates are available for all stock sizes as well as for custom sizes. Feel free to contact a sales representative for a template to get started or let our talented designers work for you.

## Disclaimers

### **Artwork**

Clients take full responsibility in obtaining the copyrights of the design(s) involved in their custom print order.

### **Color Accuracy**

There is a much higher degree of color accuracy when PANTONE® Color codes are provided. When a PANTONE Color code is provided, finished products are expected to be within 2 PANTONE Colors, either up or down (refer to PANTONE Solid Coated or Uncoated color book). Due to food grade inks, not all PANTONE Color codes can be achieved, and any possible replacement is at the manufacturer's discretion.

### **Ink Odor**

Custom printed products can have a lingering odor as a result of printing with food grade inks. A degree of ink odor should be expected in all custom printed products. Any replacement is at the manufacturer's discretion.

### **Plate Charges**

New custom print orders will be subject to plate fees. Plate fees are charged per color, per item. Re-print orders will not be charged plate fees if the existing plates are still in good condition. Customers will be notified if new plates will be necessary for their re-print orders and subsequently billed for the new plates.

### **Minimum & Lead Times**

All stated minimums apply for each size and/or design ordered. Minimums are subject to change at any time. Due to the nature of custom printed products, there may be a +/- 10% over/under run (variance between amount ordered and amount produced). Lead times are estimated and are not guaranteed.

### **Print Gap**

For plastic cups, a small gap is left between the leading edge of the design so that the design does not overlap. For paper cups and food containers, normal printing procedure is to leave a white area around the bottom rim, as indicated on the template. Clients can make a special request to extend artwork to the bottom rim but this can result in the printed design cracking once the paper is folded. If this does occur, it will leave flakes inside the cups once they are stacked.



# Karat<sup>®</sup>

BY LOLLICUP<sup>™</sup>

6185 Kimball Ave.  
Chino, CA 91708  
1.626.965.882

3201 Capital Blvd., Unit A  
Rockwall, TX 75032  
1.469.421.1400

91-312 B. Komohana St.  
Kapolei, HI 96707  
1.808.682.4221



[WWW.KARATPACKAGING.COM](http://WWW.KARATPACKAGING.COM)

COPYRIGHT © 2024–2025 KARAT BY LOLLICUP. ALL RIGHTS RESERVED.

