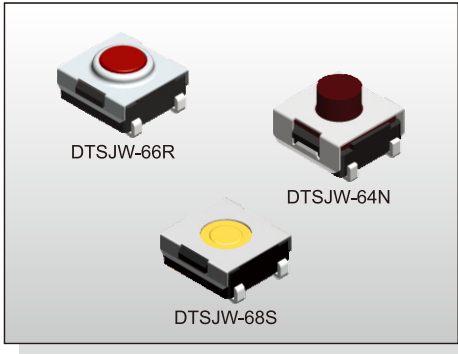


TACT SWITCH DTSJW-6 SERIES

6x6 J SMT
Washable Type



FEATURES

- ※Sealed
- ※Reflow solderable
- ※Dust proof with high reliability

APPLICATION

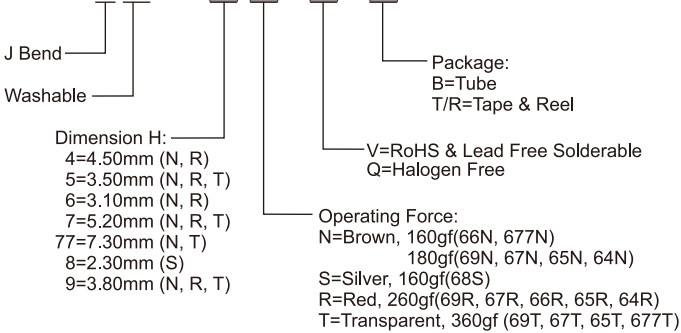
- ※Audio, OA equipment
- ※Instrumentation, Communication
- ※White goods

SPECIFICATION

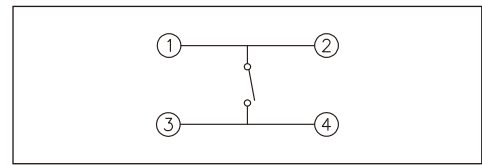
| | |
|-----------------------|---|
| Contact Rating | 50mA, 12V DC |
| Contact Resistance | 100mΩ max. |
| Insulation Resistance | 100MΩ min. 500V DC |
| Dielectric Strength | 250V AC/1 minute |
| Operating Force | 160±50gf, Brown(N) 66/677 160±50gf, Silver(S) 68 180±50gf, Brown(N) 69/67/65/64 260±70gf, Red(R) 69/67/66/65/64 360±90gf, Transparent(T) 69/67/65/677 |
| Travel | 0.25mm 68S/66N/66R/677 0.45mm (69/67N,R)/(65/64N,R,T) 0.6mm 69/67T |
| Operating Life | 100,000 cycles min. for 68/66/677 500,000 cycles min. for 69/67/65/64 |
| Operating Temp. | -25°C ~ +70°C |
| Storage Temp. | -30°C ~ +80°C |

HOW TO ORDER

D T S J W - 6



CIRCUIT



PACKAGE

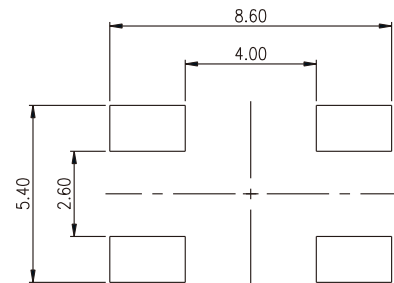
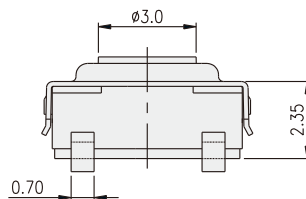
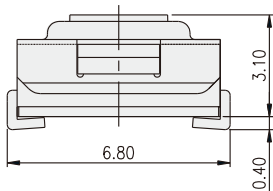
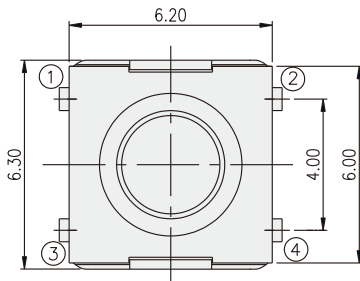
<Tube>

75 pcs

<Tape & Reel>

- DTSJW-64, 67: 900 pcs
- DTSJW-65, 69: 1800 pcs
- DTSJW-66: 1900 pcs
- DTSJW-68: 2000 pcs
- DTSJW-677: 650 pcs

DTSJW-66



P.C.B. LAYOUT

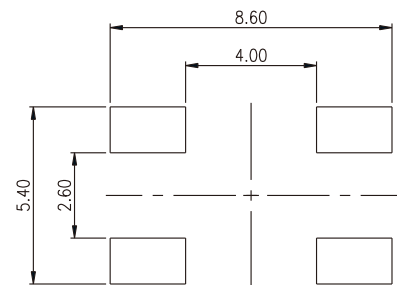
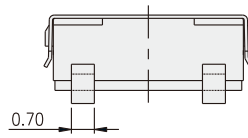
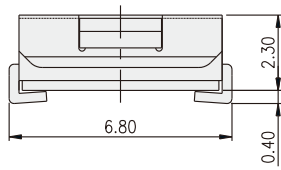
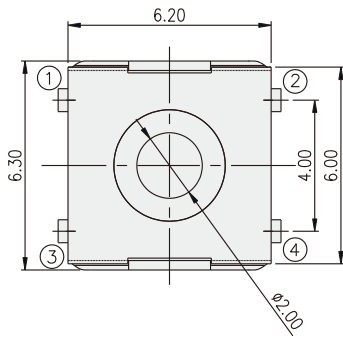
TACT SWITCH

TACT SWITCH
DTSJW-6 SERIES

6x6 J SMT
 Washable Type



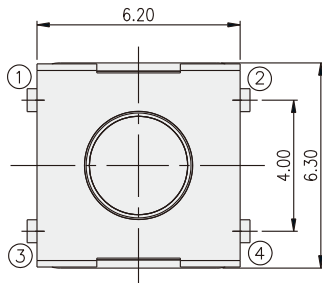
DTSJW-68



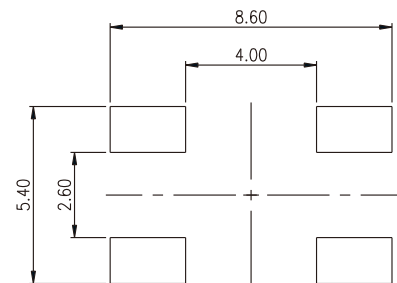
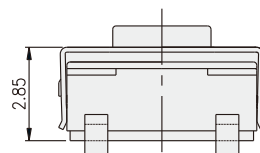
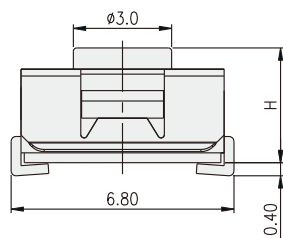
P.C.B. LAYOUT

TACT SWITCH

DTSJW-6□



| PART NO. | H |
|-----------|------|
| DTSJW-64 | 4.50 |
| DTSJW-65 | 3.50 |
| DTSJW-67 | 5.20 |
| DTSJW-69 | 3.80 |
| DTSJW-677 | 7.30 |



P.C.B. LAYOUT