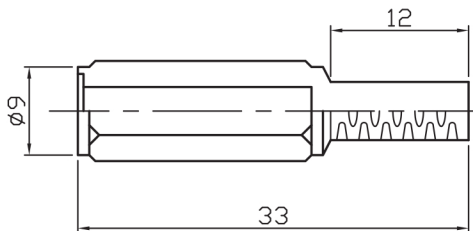
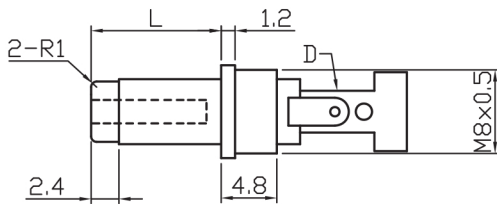
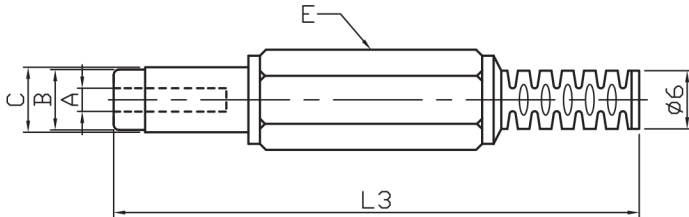


## Specifications

Rating:	1A 30VDC
Contact Resistance:	30mΩ Max
Insulation Resistance:	100MΩ Min 500V DC
Withstand Voltage:	500VAC 1 minute
Housing Material:	PBT
Contact Material:	Nickel Plated Brass
Operating Temperature:	-30°C to +70°C



Part No.	A(mm)	C(mm)	L(mm)
210021	0.7	2.5	9.5
210027	1.1	3	9
210031	1.1	3.5	9
550918	1.1	3.8	9
210014	1.3	3.5	9
210025	1.7	4	11
210019	1.7	4.8	11
210003	2.1	5.5	9
210001	2.1	5.5	14
210018	2.5	5.5	9
210016	2.5	5.5	14
210029	2.8	5.5	13