



文件版本: 0A

文件编号: QR2205



客户名称: Customer:	客户代码: Customer code:
客户料号: Customer No:	客户机型: Customer product:

客户确认回复 Customer approval status:	签核 Signature	接受 Passed
		拒收 Rejected

产品型号: Part No:	产品规格: Specification:
样品日期: Samples Date:	样品编号: Samples Lot No:

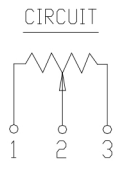
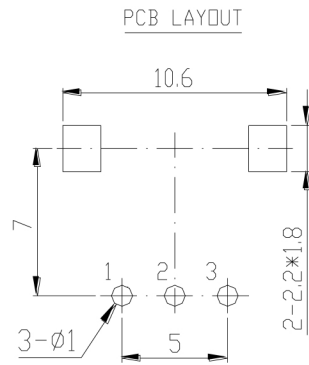
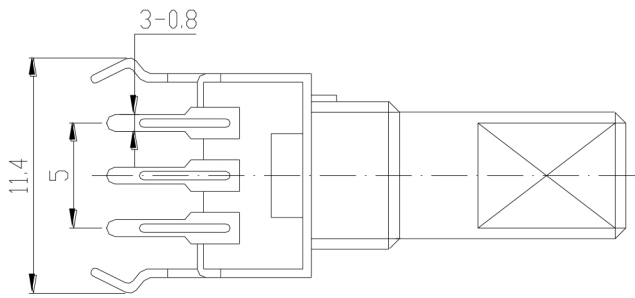
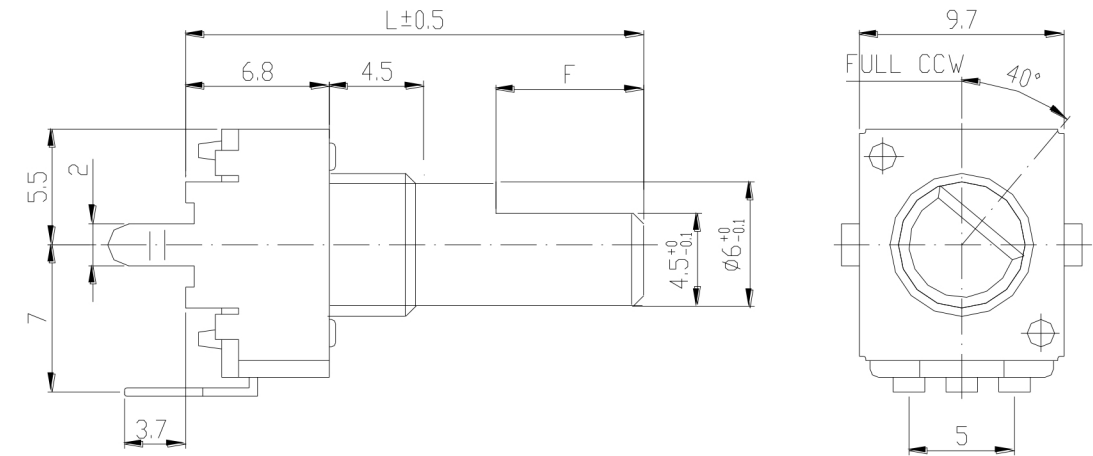
承认书包含以下内容:

This specification is composed of under mentioned:

序号: No:	项目: Item:	页码: Page:			
1	产品外形尺寸图 Product external drawing				
2	产品详细规格书 Product detailed specification				
3	阻值变化特性 Resistance characteristic				

品管部 Q·C Dept	工程部 R&D Dept	制造部 PRO·Dept	承辦 prepared By

外形图 MECHANICAL DIMENSIONS



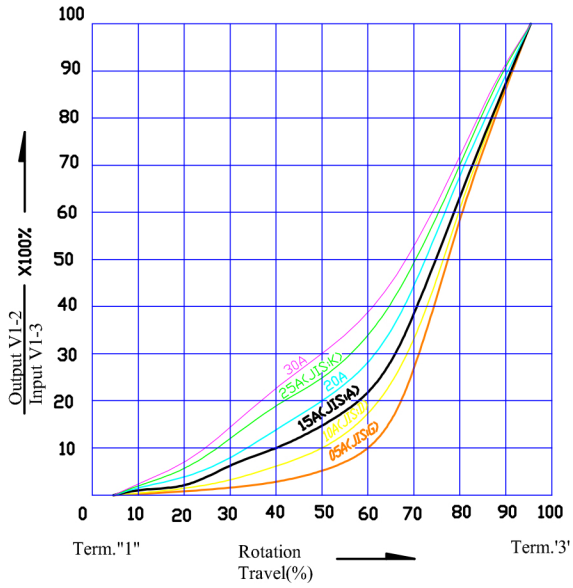
SHAFT TYPE

KQ Type				F Type				KC Type			
L	15	20	25	L	15	20	30	L	15	20	25
A	7	7	7	A	6	7	12	A	6	7	7

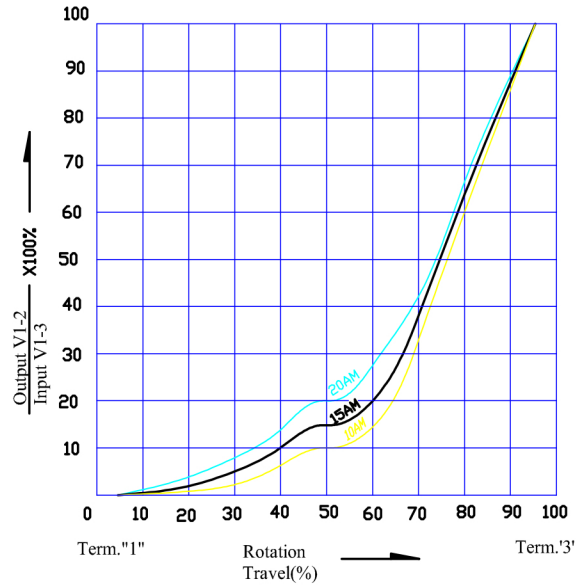
产品详细规格书
Product detailed specification

一般事項 General	
使用溫度範圍 Operating temperature	-10 °C ~ +70 °C
手工焊接 Manual soldering	300 °C max 3 sec
電氣特性 Electrical Characteristics	
總阻值 (R) Total resistance	500 Ω ~ 500 KΩ
總阻值容許誤差 Total resistance tolerance	± 20 % (Less than 500 Ω and More than 1 MΩ ± 30 %)
阻值線性 Resistance taper	<input type="checkbox"/> A <input type="checkbox"/> B <input type="checkbox"/> C
摺動雜音 Sliding noise	Less than 80 mV
殘留阻值 Residual resistance	Less than 20 Ω
定格電力 Rated power (W)	0.05 W
額定電壓 Rated voltage (V)	$E = \sqrt{P * R}$ E: Rated voltage 額定電壓 (V) P: Power rating 額定電力 (W) R: Nominal total resistance 公稱全阻抗值 (Ω) 當額定電壓超過最高使用電壓的時候，最高使用電壓即為額定電壓。 When the rated voltage exceeds the maximum operating voltage, the maximum operating voltage shall be the rated voltage.
最高使用電壓 Max operating voltage	AC 50 V DC 20 V
絕緣阻抗 Insulation resistance	More than 100 MΩ at DC 250 V
耐電壓 Withstand voltage	1 minute at AC 250 V
機械特性 Mechanical Characteristics	
全回轉角度 Total rotational angle	280 ° ± 10 °
全回扭力 Rotational torque	10 ~ 80 gf.cm
C.C 扭力 C.C torque	<input type="checkbox"/> 30 ~ 150 gf.cm
全回轉止強度 Rotational stopper strength	3 Kgf.cm max
軸推拉強度 Shaft push-pull strength	5 Kgf max
回轉壽命 Rotational life	15,000 cycles

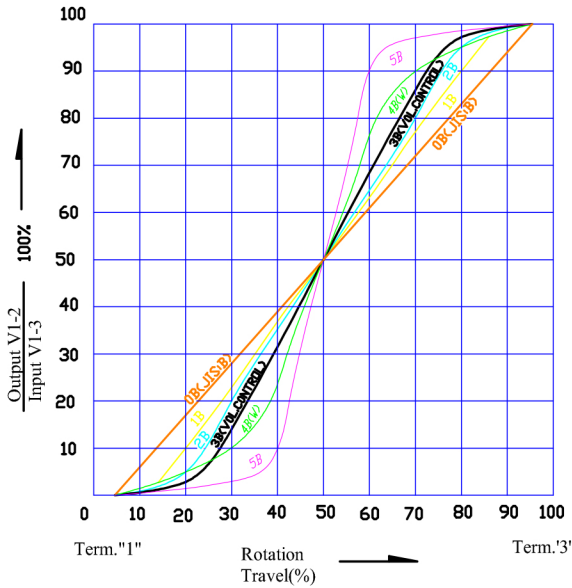
TAPERS (A) SERIES



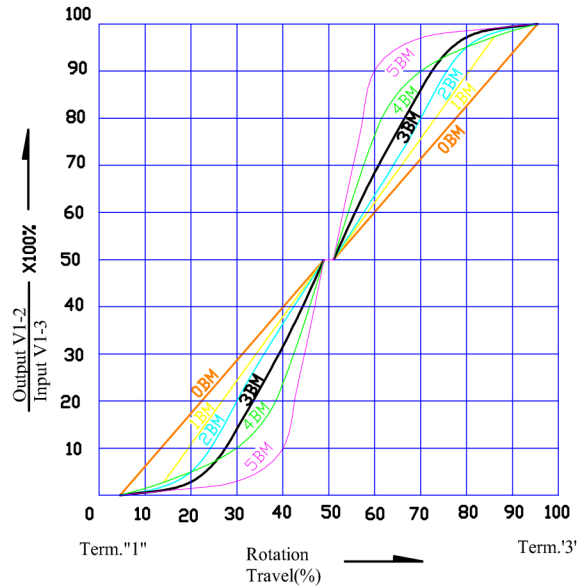
TAPERS (A) WITH 50% TAP



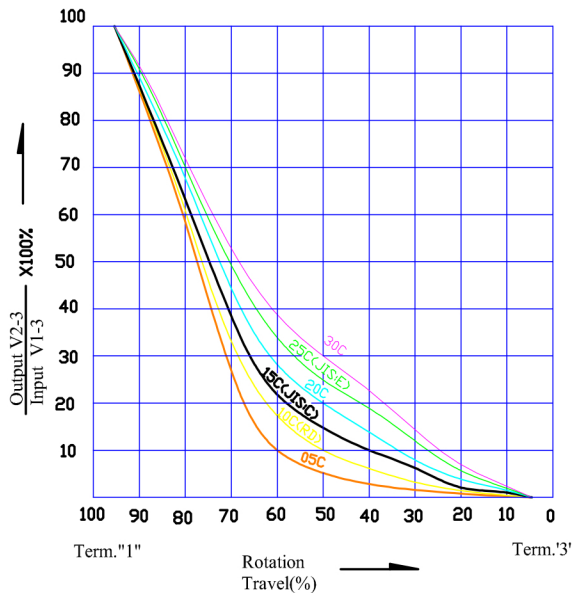
TAPERS (B) SERIES



TAPERS (B) WITH 50% TAP



TAPERS (C) SERIES



TAPERS (M) & (N)

