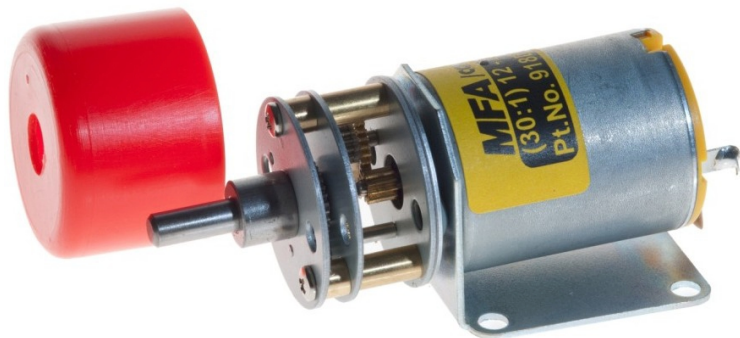


918D SERIES 25mm SINGLE RATIO METAL GEARBOX



**RE-280 MOTOR
RE-280/1 MOTOR
RE-280/5 MOTOR**

Plastic Gearbox cover & metal bracket included with this series

**WITH 4mm OUTPUT SHAFT
(ALL RATIOS)**

**RATIOS NOW AVAILABLE AS EX-STOCK ITEMS.
ALL WITH 4mm SHAFTS**

918D61/1 (1.5v-3v) RE280 MOTOR (RATIO 6:1)	918D6112/1 (12v-24v) RE280/1 MOTOR (RATIO 6:1)	918D616/1 (3v-6v) RE280/5 MOTOR (RATIO 6:1)
918D151/1 (1.5v-3v) RE280 MOTOR (RATIO 15:1)	918D15112/1 (12v-24v) RE280/1 MOTOR (RATIO 15:1)	918D1516/1 (3v-6v) RE280/5 MOTOR (RATIO 15:1)
918D301/1 (1.5v-3v) RE280 MOTOR (RATIO 30:1)	918D30112/1 (12v-24v) RE280/1 MOTOR (RATIO 30:1)	918D3016/1 (3v-6v) RE280/5 MOTOR (RATIO 30:1)
918D1001/1 (1.5v-3v) RE280 MOTOR (RATIO 100:1)	918D100112/1 (12v-24v) RE280/1 MOTOR (RATIO 100:1)	918D10016/1 (3v-6v) RE280/5 MOTOR (RATIO 100:1)
918D1501/1 (1.5v-3v) RE280 MOTOR (RATIO 150:1)	918D150112/1 (12v-24v) RE280/1 MOTOR (RATIO 150:1)	918D15016/1 (3v-6v) RE280/5 MOTOR (RATIO 150:1)
918D2501/1 (1.5v-3v) RE280 MOTOR (RATIO 250:1)	918D250112/1 (12v-24v) RE280/1 MOTOR (RATIO 250:1)	918D25016/1 (3v-6v) RE280/5 MOTOR (RATIO 250:1)
918D3601/1 (1.5v-3v) RE280 MOTOR (RATIO 360:1)	918D360112/1 (12v-24v) RE280/1 MOTOR (RATIO 360:1)	918D36016/1 (3v-6v) RE280/5 MOTOR (RATIO 360:1)
918D5001/1 (1.5v-3v) RE280 MOTOR (RATIO 500:1)	918D500112/1 (12v-24v) RE280/1 MOTOR (RATIO 500:1)	918D50016/1 (3v-6v) RE280/5 MOTOR (RATIO 500:1)
918D10241/1 (1.5v-3v) RE280 MOTOR (RATIO 1024:1)	918D1024112/1 (12v-24v) RE280/1 MOTOR (RATIO 1024:1)	918D102416/1 (3v-6v) RE280/5 MOTOR (RATIO 1024:1)

This miniature gearbox is of steel and brass construction with brass gears and is mounted on a 1mm thickness steel bracket. It incorporates a high quality three pole motor with sleeved bearings. The design and construction of the unit make it suitable for a host of model and light industrial applications.

MOTOR DATA. (RE-280, RE-280/1 & RE-280/5)

MODEL	VOLTAGE		NO LOAD		AT MAXIMUM EFFICIENCY					STALL TORQUE		
	OPERATING RANGE	NOMINAL	SPEED	CURRENT	SPEED	CURRENT	TORQUE		OUTPUT	EFF	TORQUE	
			R.P.M.	A	R.P.M.	A	oz-in	g-cm	W	%	oz-in	g-cm
RE-280	1.5 - 3	3v Constant	8800	0.24	7200	1.06	0.32	23.2	1.71	53.8	1.75	126.0
RE-280/1	12 - 24	12v Constant	8224	0.046	6636	0.194	0.27	19.2	1.31	56.1	1.389	99.3
RE-280/5	3 - 6	6v Constant	9256	0.108	7703	0.534	0.33	23.7	1.87	58.4	2.648	141.2

Stall Current RE-280 at 3v = 4.8A, RE-280/1 at 12v = 0.81A. RE-280/5 at 6v = 2.65A

REDUCTION TABLE. R.P.M. (NO LOAD)

SUPPLY VOLTAGE	1.5v	3v	6v	12v	18v	24v
918D6/1	733	1467				
918D6112/1			685	1371	2056	2741
918D616/1		771	1543			
918D151/1	293	587				
918D15112/1			274	548	822	1097
918D1516/1		309	617			
918D301/1	147	293				
918D30112/1			137	274	411	548
918D3016/1		154	309			
918D1001/1	44	88				
918D100112/1			41	82	123	164
918D10016/1		46	93			
918D1501/1	29	59				
918D150112/1			27	55	82	110
918D15016/1		31	62			
918D2501/1	18	35				
918D250112/1			16	33	49	66
918D25016/1		19	37			
918D3601/1	12	24				
918D360112/1			11	23	34	46
918D36016/1		13	26			
918D5001/1	9	18				
918D500112/1			8	16	25	33
918D50016/1		9	19			
918D10241/1	4	9				
918D1024112			4	8	12	16
918D102416/1		5	9			

WEIGHT	
918D6/1	75g
918D6112/1	73g
918D616/1	74g
918D151/1	75g
918D15112/1	74g
918D1516/1	75g
918D301/1	75g
918D30112/1	78g
918D3016/1	80g
918D1001/1	76g
918D100112/1	75g
918D10016/1	75g
918D1501/1	78g
918D150112/1	76g
918D15016/1	81g
918D2501/1	76g
918D250112/1	76g
918D25016/1	77g
918D3601/1	76g
918D360112/1	76g
918D36016/1	77g
918D5001/1	89g
918D500112/1	88g
918D50016/1	89g
918D10241/1	88g
918D1024112	89g
918D102416/1	89g

Note: Motor speeds may vary by (+) or (-) 12.5%

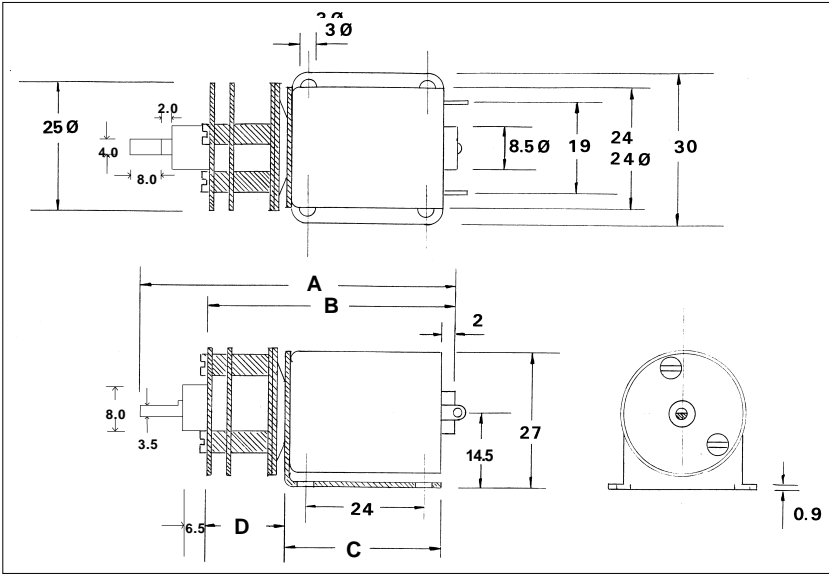
IMPORTANT NOTICE

At very low ratios the torque produced by this geared motor combination may exceed the maximum permissible torque of the gearbox. In this situation the unit must not be allowed to stall as this may damage the gears.

IMPORTANT NOTICE

Due to the wide range of applications for this product it is the users responsibility to establish the products suitability for their individual purpose(s).

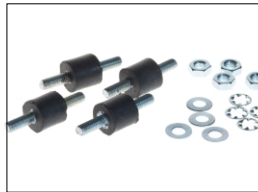
918D SERIES 25mm SINGLE RATIO METAL GEARBOX



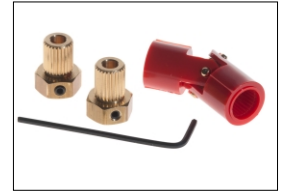
RATIO	A	B	C	D
6:1	67.5	51.3	33.5	17.8
15:1	67.5	51.3	33.5	17.8
30:1	67.5	51.3	33.5	17.8
100:1	67.5	51.3	33.5	17.8
150:1	67.5	51.3	33.5	17.8
250:1	67.5	51.3	33.5	17.8
360:1	67.5	51.3	33.5	17.8
500:1	69.5	53.3	33.5	19.3
1024:1	69.5	53.3	33.5	19.3

NOTE: all diameters in mm

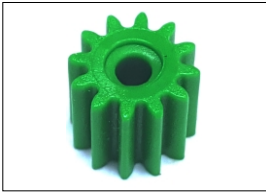
ACCESSORIES FOR 918D SERIES GEARBOX.



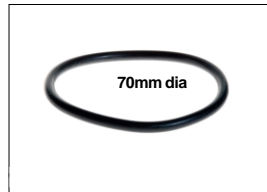
Part No. 1071. Anti vibration mount. M3. 9g



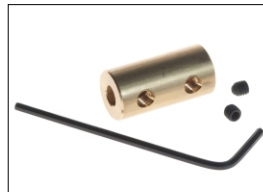
Part No. 1105/61 Universal Coupling. 4mm - 4mm. 10g See Page 63 for full range of combinations



Part No. 917D2458. Pinions (Plastic) 12 tooth. 1.9mm I.D. 3g



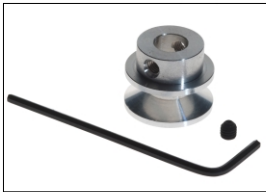
Part No. 917D2515. "O" Ring 70mm x 5mm Dia. 5g



Part No. 918D1. In-Line Coupling. 2mm - 3mm. (Dia. 8mm x 20mm). 8g
Part No. 918D1/1. In-Line Coupling 4mm - 4mm. (Dia. 10mm x 20mm). 11g



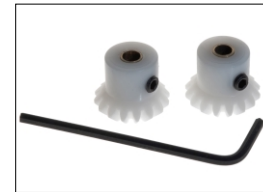
Part No. 918D2. Pulley. 2mm I.D. (25mm dia. x 14.75mm) (Aluminium). 12g
Part No. 918D2/1. Pulley 4mm I.D. (25mm dia. x 14.75mm) (Aluminium). 12g



Part No. 918D3. Pulley. 2mm I.D. (16mm dia. x 13.6mm) (Aluminium). 6g
Part No. 918D3/1. Pulley 4mm I.D. (16mm dia x 13.6mm) (Aluminium). 6g



Part No. 918D4. Gear Adapter. 2mm I.D. Shaft Dia 6mm. 4g
Part No. 918D4/1 Gear Adapter. 4mm I.D. Shaft Dia 6mm. 4g



Part No. 918D7. Nylon Bevel Gears (1:1). O.D. 17.2mm. 4mm I.D.. Module 1.0. 6g



Part No. 918D8. Stainless Steel Shaft. 4mm OD x 150mm. 15g

GEARED MOTOR TORQUE RATINGS AT MAX. EFFICIENCY.

	3v Motor at 3v (g.cm)	12v Motor at 12v (g.cm)	6v Motor at 6v (g.cm)
6:1	96	120	115
15:1	219	274	260
30:1	390	488	462
100:1	1000	1000	1000
150:1	1200	1200	1200
250:1	1200	1200	1200
360:1	1200	1200	1200
500:1	1500	1500	1500
1024:1	1500	1500	1500

918D SERIES	
No Load Backlash	Max 2 deg.
Max Radial Load (10mm from flange)	300gf.
Shaft Axial Load	200gf.



Part No. 918D10. Bearing Blocks. 4mm I.D. (20 x 20 x 12.5mm) . 32g

NOTE: To establish Torque Rating in Nm, divide g.cm by 10,197.0

Subject to minimum order quantities of 250 units, the following ratios are also available with a six week lead-time. The physical dimensions of these other gearboxes may vary from the data as illustrated above. Details of individual gearboxes are available upon request.

GEARBOX 10:1 WITH RE280 motor (1.5v - 3v)
GEARBOX 21:1 WITH RE280 motor (1.5v - 3v)
GEARBOX 44:1 WITH RE280 motor (1.5v - 3v)
GEARBOX 60:1 WITH RE280 motor (1.5v - 3v)
GEARBOX 77:1 WITH RE280 motor (1.5v - 3v)
GEARBOX 112:1 WITH RE280 motor (1.5v - 3v)
GEARBOX 170:1 WITH RE280 motor (1.5v - 3v)

GEARBOX 10:1 WITH RE280/1 motor (12v - 24v)
GEARBOX 21:1 WITH RE280/1 motor (12v - 24v)
GEARBOX 44:1 WITH RE280/1 motor (12v - 24v)
GEARBOX 60:1 WITH RE280/1 motor (12v - 24v)
GEARBOX 77:1 WITH RE280/1 motor (12v - 24v)
GEARBOX 112:1 WITH RE280/1 motor (12v - 24v)
GEARBOX 170:1 WITH RE280/1 motor (12v - 24v)

GEARBOX 200:1 WITH RE280 motor (1.5v - 3v)
GEARBOX 320:1 WITH RE280 motor (1.5v - 3v)
GEARBOX 400:1 WITH RE280 motor (1.5v - 3v)
GEARBOX 700:1 WITH RE280 motor (1.5v - 3v)
GEARBOX 800:1 WITH RE280 motor (1.5v - 3v)
GEARBOX 900:1 WITH RE280 motor (1.5v - 3v)
GEARBOX 1153:1 WITH RE280 motor (1.5v - 3v)

GEARBOX 200:1 WITH RE280/1 motor (12v - 24v)
GEARBOX 320:1 WITH RE280/1 motor (12v - 24v)
GEARBOX 400:1 WITH RE280/1 motor (12v - 24v)
GEARBOX 700:1 WITH RE280/1 motor (12v - 24v)
GEARBOX 800:1 WITH RE280/1 motor (12v - 24v)
GEARBOX 900:1 WITH RE280/1 motor (12v - 24v)
GEARBOX 1153:1 WITH RE280/1 motor (12v - 24v)