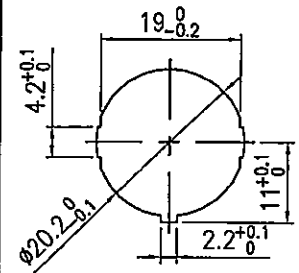
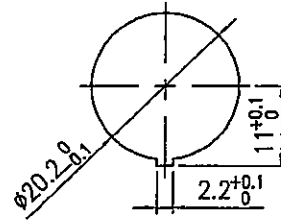


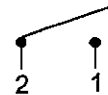
Rating	16A 125VAC, 10A 250VAC		Mounting Hole
	10A 125VAC, 6A 250VAC	CQC	
	10(4)A 250V~		
	20A 12V DC, 10A 24VDC		
Contact Resistance	50m ohm Max.		
Insulation Resistance	DC 500V 100M ohm Min.		
Dielectric Strength	AC 1500V 1 minute		
Operation Temperature	-25°C~85°C		
Switch Function	2P SPST ON-OFF		



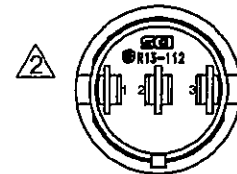
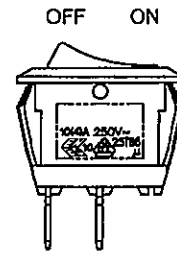
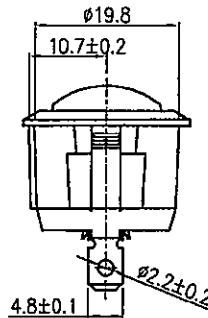
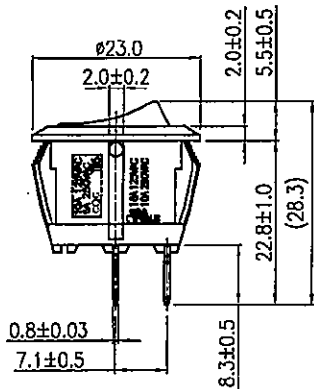
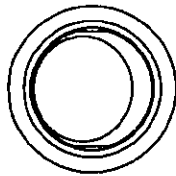
Thickness:2.0~3.0

Thickness:0.7~3.0

Circuit Diagram



*MATERIAL-Frame: Nylon 66
 Actuator: Nylon 66
 Terminals: C1100
 Contacts: AgSnO2InO3
 *Snap-in mounting, easy to install Switch into Panel.
 *.Black body, Black rocker.



原稿
 2015.4.14
 研發部

Tolerances ±0.3 Unless Otherwise Specified

03/18/15	曹盈芳	依營業需求增加10A 24VDC			
7/8/13	周傑輝	增加SCI刻字			
04/23/10	曹盈芳	為了整合安規取消CSA,追加ENECVDE10的溫度刻字由T85提升25T85,追加CQC,10A125VAC,6A250VAC,T85刻字,依客戶要求Rating追加20A 12V DC			
Date	Name	Description			No.
Drawn	Checked	Approved	SCI BOM No.	1820860	Model Name
曹盈芳			Customer No.		ROCKER SWITCH
03/18/15		3/18/15	Unit	mm	Model No.
					R13-112A-02
					Shin Chin Industrial Co., Ltd.
					Rev.
					3