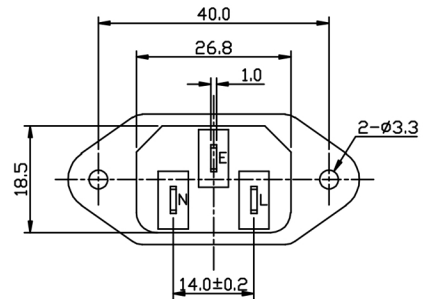
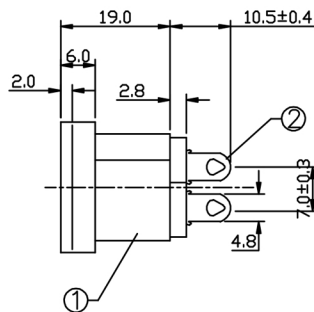
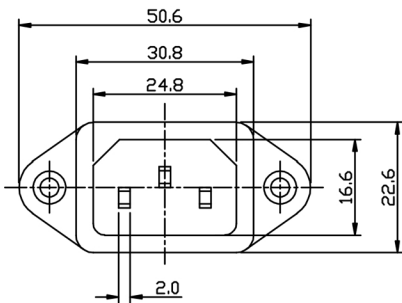


Specifications

Rating:	10A 250VAC
Contact Resistance:	30mΩ
Insulation Resistance:	100MΩ Min
Dielectric Strength:	2000VAC 1 minute
Contact Material:	Nickel Plated Brass
Housing Material:	PBT
Operating Temperature:	-40°C to +105°C



SCHEMATIC



Description	Ref Code
C14 IEC Panel Mount Inlet	550385