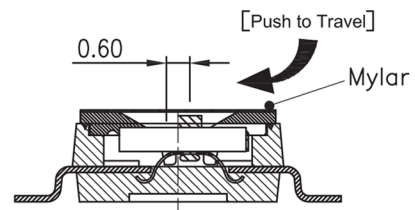
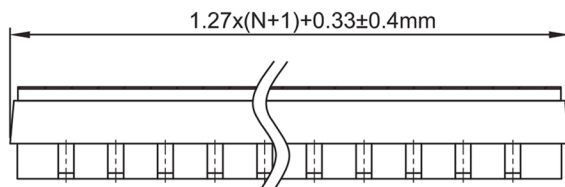
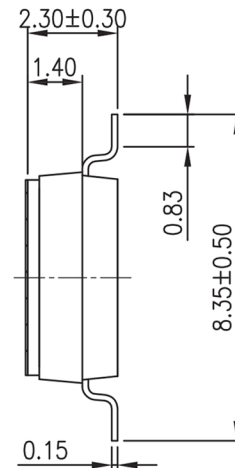
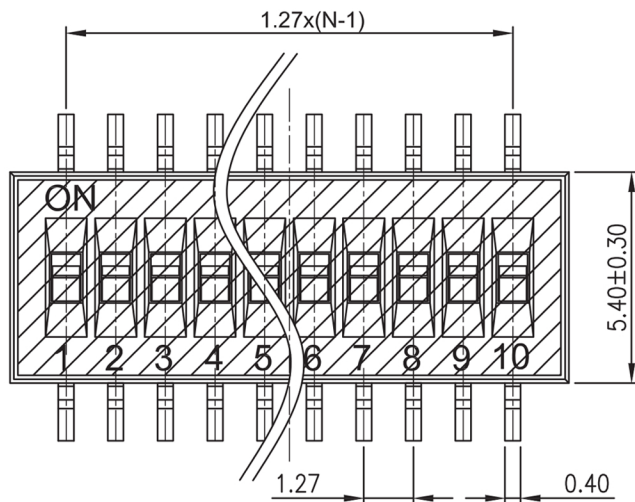
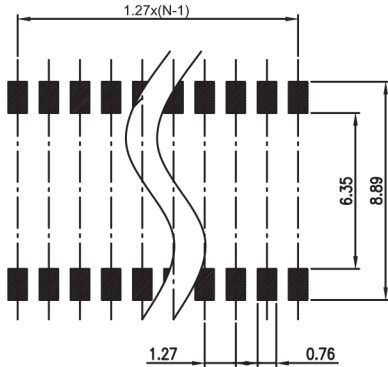


Specifications

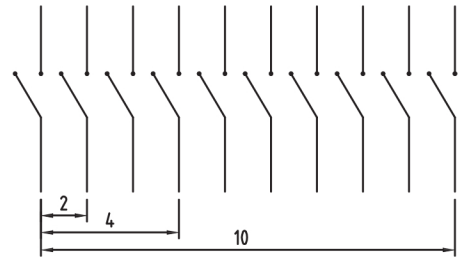
| | |
|------------------------|----------------------------------------------------|
| Rating: | 25mA 24VDC (switching), 100mA 50VDC (steady state) |
| Contact Resistance: | 100mΩ Max |
| Insulation Resistance: | 100MΩ Min |
| Dielectric Strength: | 300VAC |
| Operating Temperature: | -40°C to +85°C |
| Electrical Life: | 1000+ Cycles |
| Operating Force: | 9.8N Max |



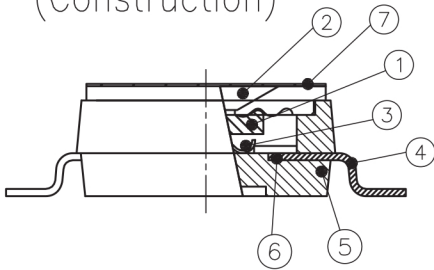


RECOMMENDED P.C.B. LAYOUT (TOP VIEW)

[Schematic]



(Construction)



| Number | Part Name | Material | Finished |
|--------|------------------|------------------|----------|
| ① | Actuator | UL94 V0 | White |
| ② | Cover | UL94 V0 | Black |
| ③ | Movable | Beryllium Copper | 3µ' Gold |
| ④ | Terminal | Brass | 1µ' Gold |
| ⑤ | Base | UL94 V0 | Black |
| ⑥ | Terminal Contact | Brass | 3µ' Gold |
| ⑦ | Mylar | UL94 V0 | 0.05mm |

| Description | Ref Code |
|-------------------------------------------|----------|
| 6 Way Half Pitch SMD DIL Switch 1.27mm | 483048 |