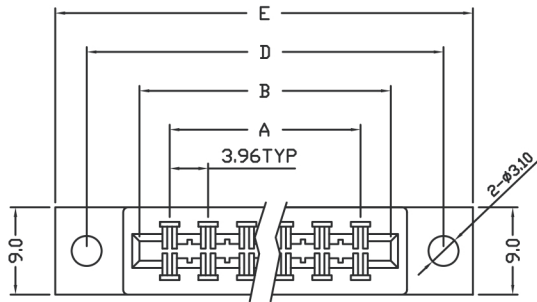
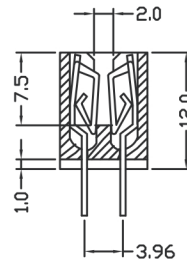
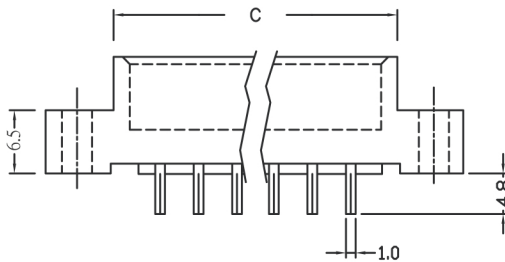


## Specifications

Current Rating:	2A
Housing Material:	30% Glass Filled PBT UL94V-0
Contact Material:	Gold Plated Brass
Contact Resistance:	30mΩ Max
Insulation Resistance:	1000MΩ Min
Dielectric Strength:	1000VAC 1 Min
Operating Temperature:	-45°C to +105°C



Circuit	Dimension				
	A	B	C	D	E
10	15.84	24.06	27.40	34.94	41.24
12	19.80	28.02	31.36	38.90	45.20
16	27.72	35.94	39.28	46.82	53.12
20	35.64	43.86	47.20	54.74	61.04
24	43.56	51.78	55.12	62.66	68.96
26	47.52	55.74	59.08	66.62	72.92
28	51.48	59.70	63.04	70.58	76.88
30	55.44	63.66	67.00	74.54	80.84
32	59.40	67.62	70.96	78.50	84.80
36	67.32	75.54	78.88	86.42	92.72
40	75.24	83.46	86.80	94.34	100.64
44	83.16	91.38	94.72	102.26	108.56
46	87.12	95.34	98.68	106.22	112.52
50	95.04	103.26	106.60	114.14	120.44
56	106.92	115.14	118.48	126.02	132.32
60	114.84	123.06	126.40	133.94	140.24
62	118.80	127.02	130.36	137.90	144.20
64	122.76	130.98	134.32	141.86	148.16
70	134.64	142.86	146.20	153.74	160.04
72	138.60	146.82	150.16	157.70	164.00
86	166.32	174.54	177.88	185.49	191.48



Description	Ref Code
12 Pin Card Edge Connector 3.96mm	482065