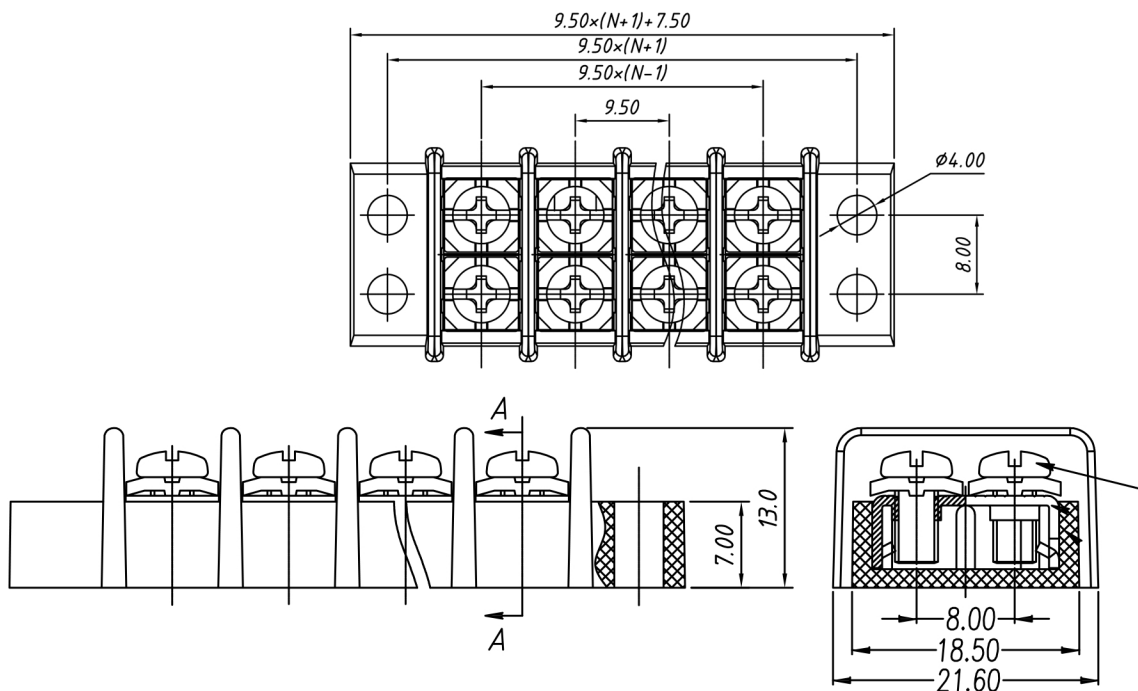


Specifications

Rating:	20A 300V
Contact Resistance:	20mΩ Max
Insulation Resistance:	500MΩ Min
Dielectric Strength:	2000VAC 1 minute
Housing Material:	PA66 UL94V-0
Contact Material:	Tin Plated Brass
Wire Range:	12-22AWG
Operating Temperature:	-40°C to +105°C



Description	Ref Code
12 Way Screw Barrier Terminal Block	481144