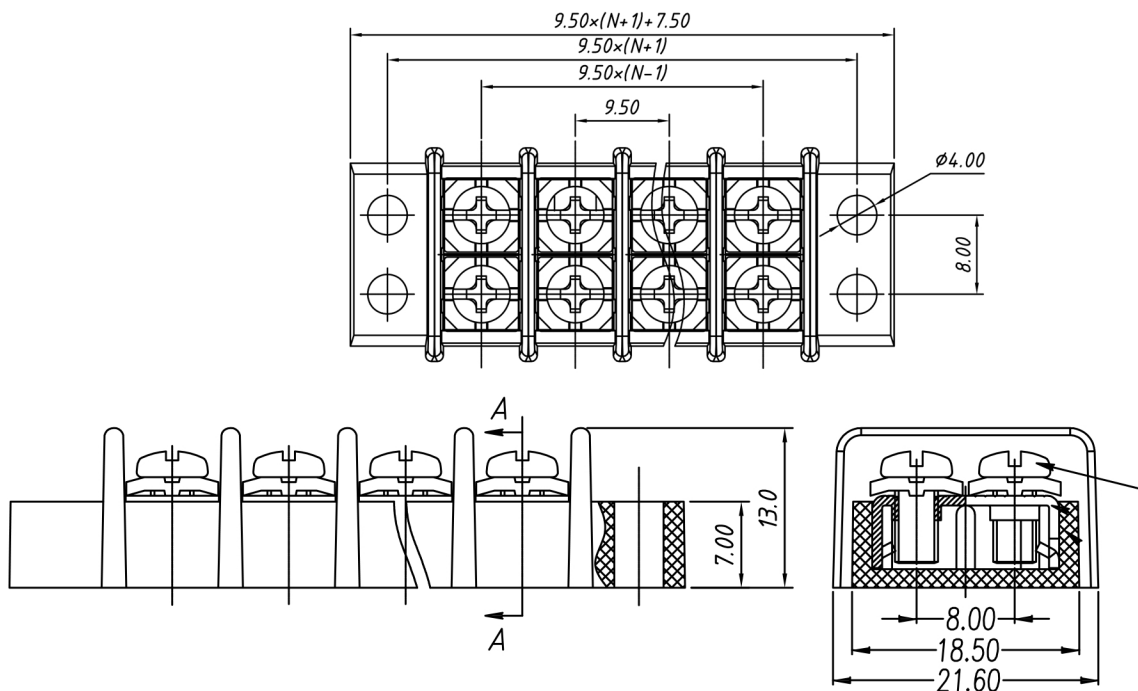


Specifications

| | |
|------------------------|------------------|
| Rating: | 20A 300V |
| Contact Resistance: | 20mΩ Max |
| Insulation Resistance: | 500MΩ Min |
| Dielectric Strength: | 2000VAC 1 minute |
| Housing Material: | PA66 UL94V-0 |
| Contact Material: | Tin Plated Brass |
| Wire Range: | 12-22AWG |
| Operating Temperature: | -40°C to +105°C |



| Description | Ref Code |
|------------------------------------|----------|
| 3 Way Screw Barrier Terminal Block | 481138 |