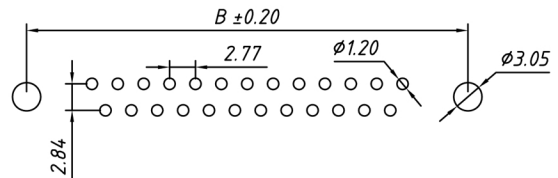
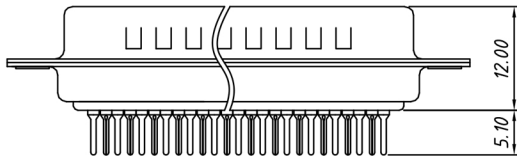
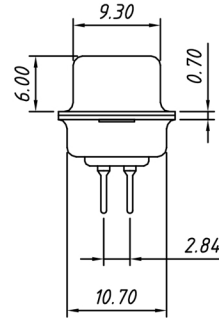
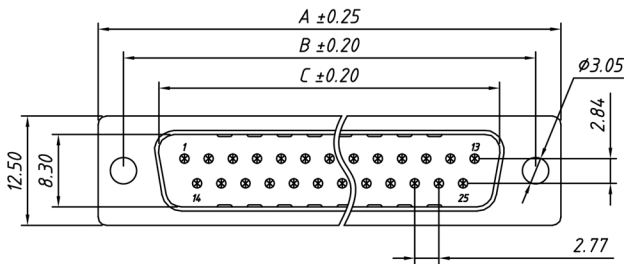


## Specifications

Contact Resistance:	20mΩ Max
Insulation Resistance:	1000MΩ Min
Dielectric Strength:	500VAC 1 minute
Housing Material:	PBT + 30% Glass Filled, UL94V-0
Shell Material:	Nickel Plated Steel
Contact Material:	Gold Plated Brass
Operating Temperature:	-40°C to +105°C



**RECOMMENDED PCB LAYOUT**  
TOLERANCE: ±0.05mm

Number of Contacts	DIMENSION		
	A±0.25	B±0.20	C±0.20
09	30.81	24.99	16.92
15	39.14	33.32	25.25
25	53.04	47.04	38.96
37	69.32	63.50	55.42

Description	Ref Code
25-Way Male PCB D Plug Connector	480202