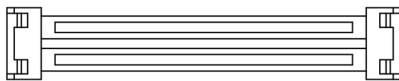
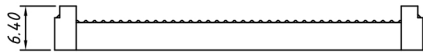
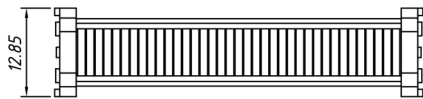
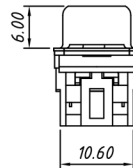
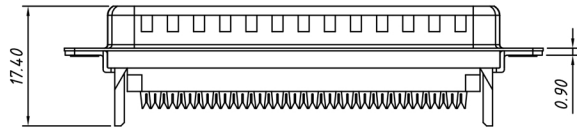
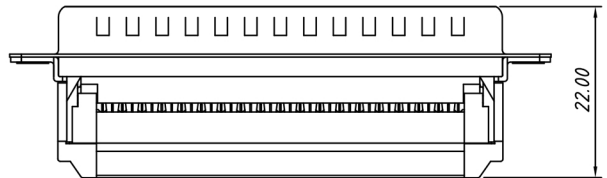
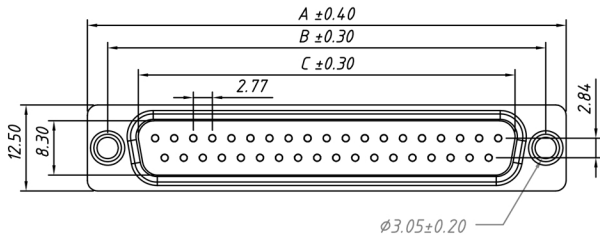


Specifications

Contact Resistance:	20mΩ Max
Insulation Resistance:	1000MΩ Min
Dielectric Strength:	500VAC 1 minute
Housing Material:	PBT + 30% Glass Filled, UL94V-0
Shell Material:	Nickel Plated Steel
Contact Material:	Gold Plated Brass
Operating Temperature:	-40°C to +105°C



Number of Contacts	DIMENSION		
	A±0.40	B±0.30	C±0.30
09	30.90	24.99	16.90
15	39.20	33.05	25.25
25	53.10	47.04	38.96
37	69.40	63.50	55.42

Description	Ref Code
15-Way IDC Male D Plug Connector	480194