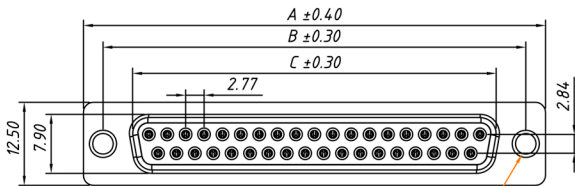
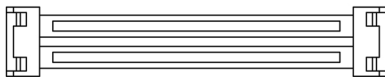
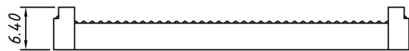
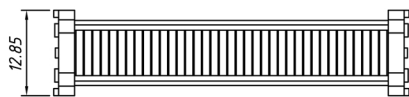
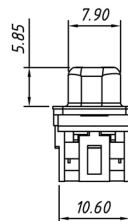
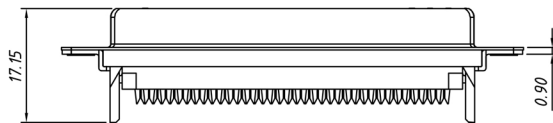
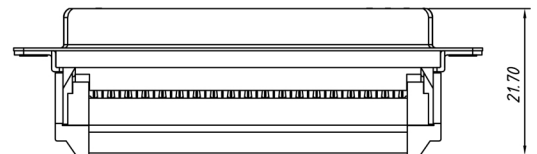


## Specifications

Contact Resistance:	20mΩ Max
Insulation Resistance:	1000MΩ Min
Dielectric Strength:	500VAC 1 minute
Housing Material:	PBT + 30% Glass Filled, UL94V-0
Shell Material:	Nickel Plated Steel
Contact Material:	Gold Plated Brass
Operating Temperature:	-40°C to +105°C



$\phi 3.05 \pm 0.20$



Number of Contacts	DIMENSION		
	A±0.40	B±0.30	C±0.30
09	30.90	24.99	16.30
15	39.20	33.0500 0	24.60
25	53.10	47.04	38.30
37	69.40	63.50	54.80

Description	Ref Code
9-Way IDC Female D Socket Connector	480193