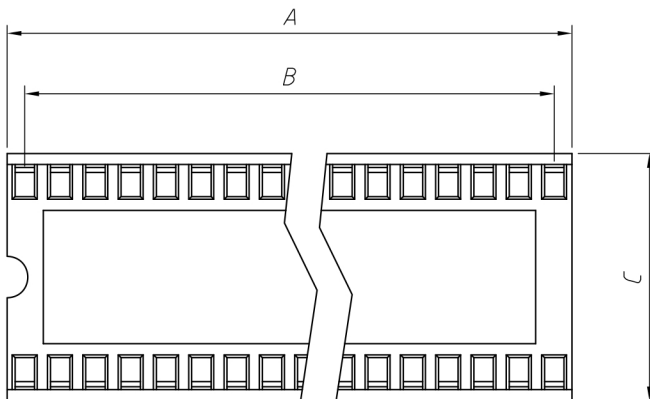
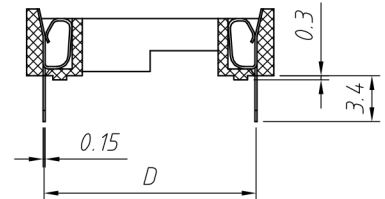
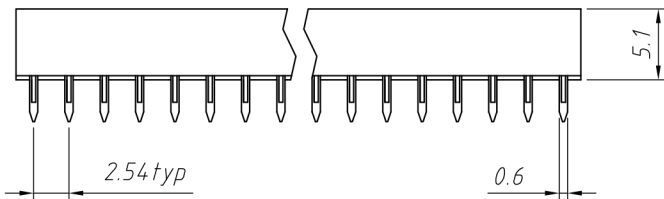
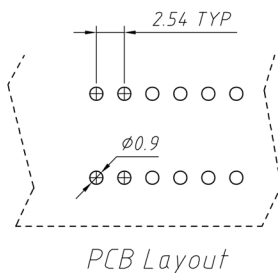


Specifications

| | |
|------------------------|-------------------|
| Current Rating: | 1A |
| Contact Material: | Tin Plated Bronze |
| Housing Material: | PBT UL94V-0 |
| Contact Resistance: | 20mΩ Max |
| Insulation Resistance: | 5000MΩ Min |
| Operating Temperature: | -40°C to +105°C |



| Position | A | B | C | D |
|----------|-------|-------|-------|-------|
| 08 | 10.16 | 7.62 | 10.16 | 7.62 |
| 14 | 17.78 | 15.24 | 10.16 | 7.62 |
| 16 | 20.32 | 17.78 | 10.16 | 7.62 |
| 18 | 22.86 | 20.32 | 10.16 | 7.62 |
| 20 | 25.40 | 22.86 | 10.16 | 7.62 |
| 24 | 30.48 | 27.94 | 10.16 | 7.62 |
| 24 | 30.48 | 27.94 | 17.78 | 15.24 |
| 28 | 35.56 | 33.02 | 10.16 | 7.62 |
| 28 | 35.56 | 33.02 | 17.78 | 15.24 |
| 32 | 40.54 | 38.10 | 17.78 | 15.24 |
| 40 | 50.80 | 48.26 | 17.78 | 15.24 |
| 42 | 53.21 | 50.80 | 17.78 | 15.24 |
| 48 | 60.80 | 58.42 | 17.78 | 15.24 |



| Description | Ref Code |
|-----------------------------|----------|
| 14-Pin DIP IC Socket 7.62mm | 222002 |