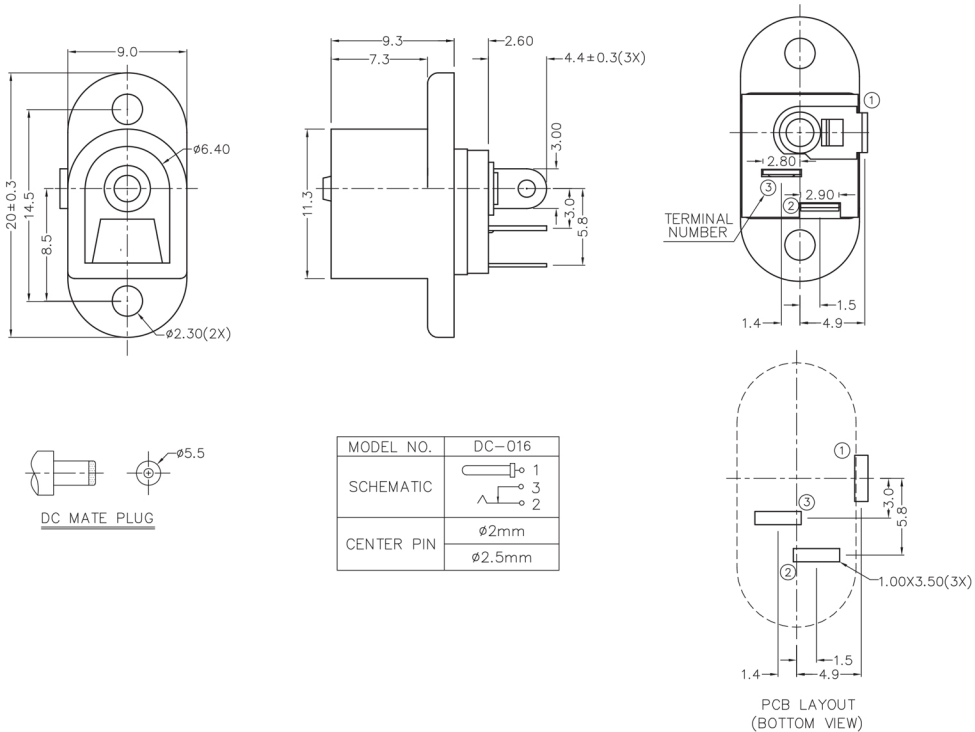


Specifications

Rating:	2A 16VDC
Contact Resistance:	30mΩ Max
Insulation Resistance:	50MΩ Min 500V DC
Withstand Voltage:	500VAC 1 minute
Housing Material:	PBT
Contact Material:	Nickel Plated Copper
Operating Temperature:	-30°C to +70°C



Description	Ref Code
2.1mm Chassis Mounting DC Power Socket Connector	210054