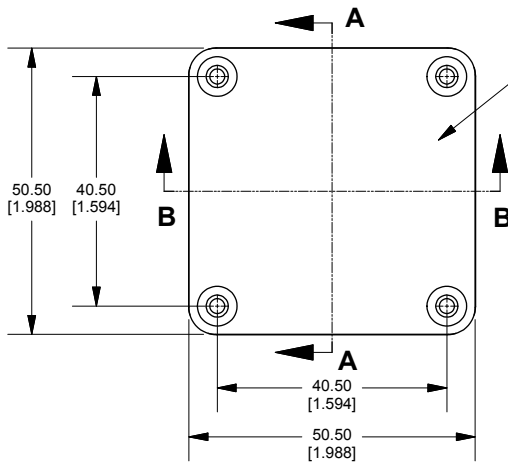
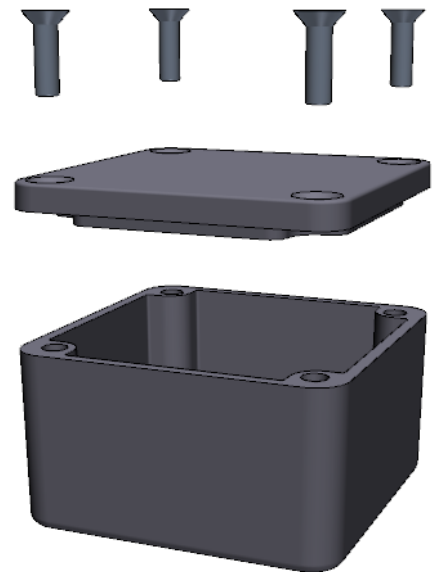
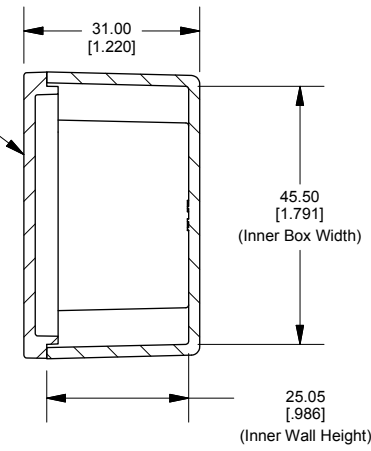


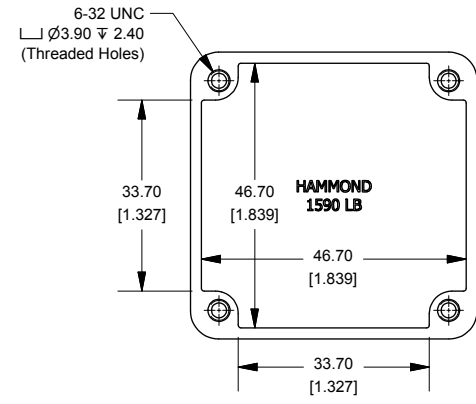
### Top View of Assembly



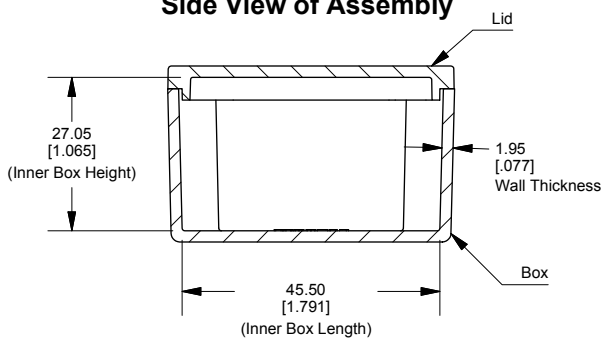
### SECTION A-A End View of Assembly



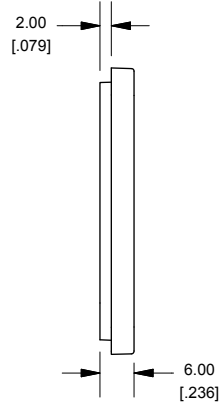
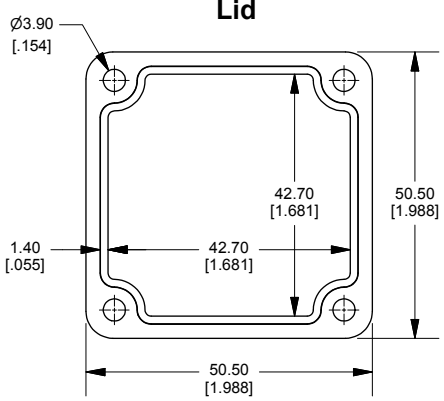
### Top View Looking Inside Box



### SECTION B-B Side View of Assembly



### Lid



Enclosures can be Factory Modified ( Milling, Drilling, Printing etc.)  
 Contact Factory [mjm@hammondmfg.com](mailto:mjm@hammondmfg.com) for quotes  
 Solid models of this enclosure available in STEP or IGES.

#### NOTE

Purchased assembly includes box, lid and 4 cover screws.  
 Box and lid are made from Diecast Aluminum Alloy.  
 Silicone Gasket supplied with liquid resistant enclosure.

#### PART NUMBERS

<b>1590LB Enclosure</b>	
Natural Finish Enclosure	1590LB
Black Textured Enclosure	1590LBBK
<b>1590LB Liquid Resistant Enclosure (Silicone Gasket)</b>	
Natural Finish Enclosure	1590WLB
Black Textured Enclosure	1590WLBBK
<b>ACCESSORIES</b>	
<b>Recommended Torque: 75 ozf.in / 55 cN.m</b>	
<b>Liquid Resistant Cover Screws</b>	
Stainless Steel Cover Screws (Pkg 100)	
[6-32 x 1/2" With O-Ring]	1590WMS100
Black Stainless Steel Cover Screws (Pkg 100)	1590WMS100BK
[6-32 x 1/2" With O-Ring]	
<b>Standard Cover Screws</b>	
Plated Cover Screws (Pkg 100)	1590MS100
[6-32 x 1/2"]	
Black Cover Screws (Pkg 100)	1590MS100BK
[6-32 x 1/2"]	

**HAMMOND  
MANUFACTURING™**

**1590LB**

[www.hammondmfg.com](http://www.hammondmfg.com)

Dimensions:  
mm  
[inches]