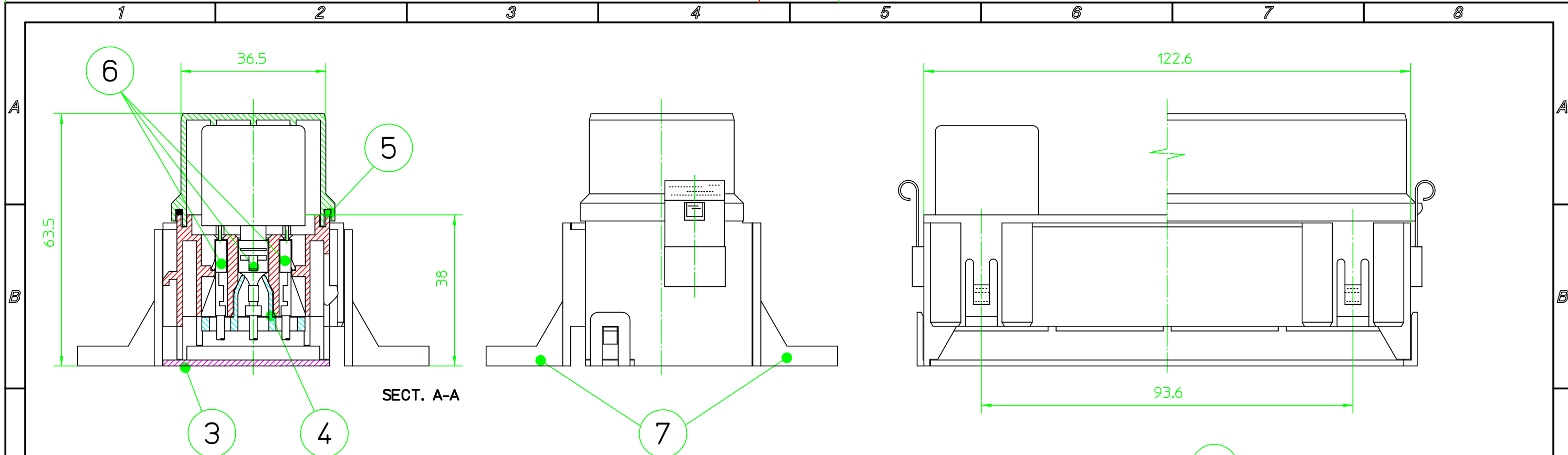


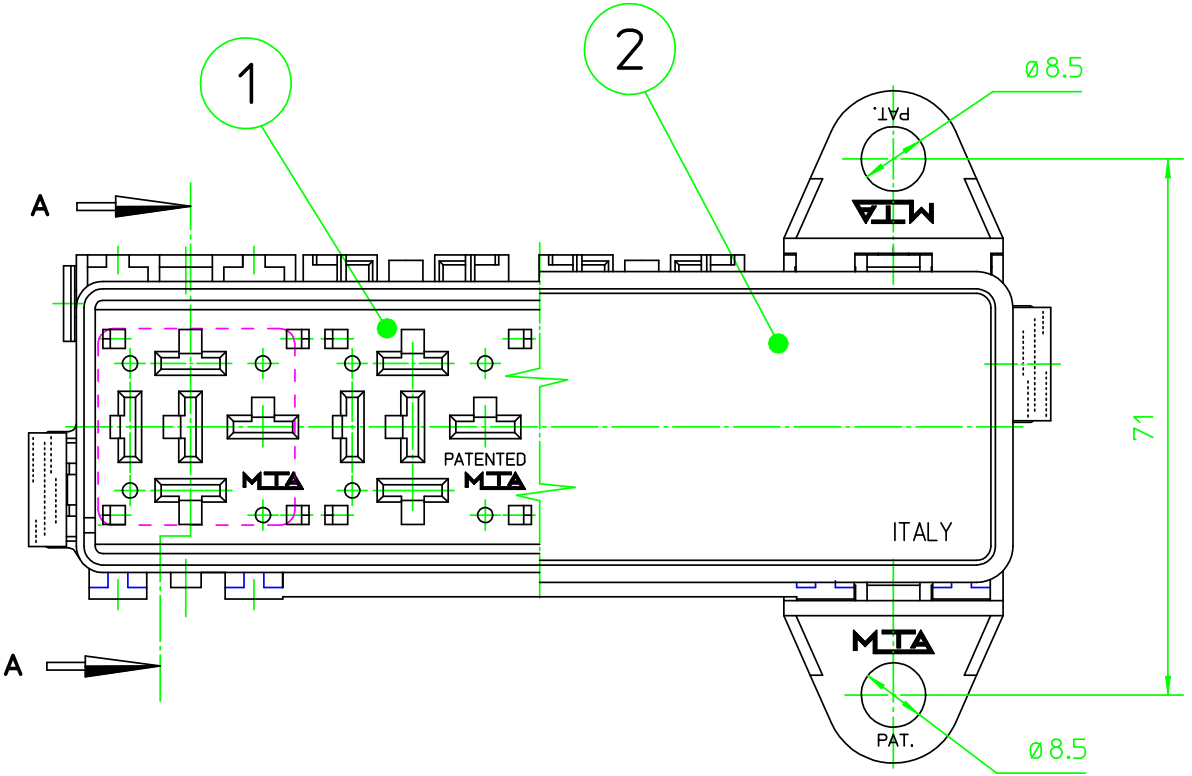
All proprietary rights reserved by MTA S.p.A. - This drawing shall not be reproduced, or in any way utilized, for the manufacture of the component or unit herein illustrated and must not be released to other parties, without written consent. Any infringement will be legally pursued.



OPERATING FEATURES		
FEATURE	UNIT	VALUE
T.min - T.max	°C	-40 / +120
V. max	V	32
IP	IEC 529	32
* I Continuous	A	120 (14W)

**\*APPLICATION WITH CURRENT HIGHER THAN THE INDICATED ONE HAVE TO BE VERIFIED AND AUDITED ONE BY ONE**

**UNCONTROLLED COPY**  
in case of drawing updating/revision  
NO AUTOMATIC  
resubmission will follow



Pos.	Q.ty	DENOMINATION	MATERIAL	COLOR
7	2	FIXING BRACKET	PA66 - V2	BLACK
6	1	TERMINAL	CuZn Tin Plated	-
5	1	GASKET	NBR 50	BLACK
4	1	SECONDARY LOCK	PA66 - V2	YELLOW
3	1	BOTTOM COVER	PA66 - V2	BLACK
2	1	UPPER COVER	PC - V2	TRANSPARENT
1	1	RELAY HOUSING	PA66-GF25 - V2	BLACK

		MTA P/N	0100665/10	Denom. RELAY BOX 4 WAY		
		Draw No.	<b>B0-002.006A</b>	Used for		
Rel. Level	APPROVED	Draw for	CLIENT	Relevant Standard		
Draft.	29/05/1991 M.CORBANI	Scale	1:1	Weight(g)	Lin.Tol.±	
Chk	29/05/1991 M.CORBANI				Ang.Tol.±	
PQApp	02/07/2009 R.GONZALEZ	A3		Dimensions in (mm)	Material	SEE TABLE
App.	02/07/2009 M.CORBANI				Sheet	1/1
					Color	SEE TABLE
7 UPDATED ITEM 1 RELAY HOUSING						
No.	Reason for Revision			Date	01/07/2009	
				Name	P. BALORDI	