



homework

Beautifully functional. Bold aesthetics.
Simple living. Homework Cabins are
building better ways to live.

Homewerk create small transportable buildings, interiors and furniture inspired by 1960's New Zealand architecture. We love the functionality, use of colour and the simple materials showcased in this era.

Beautifully functional. Bold aesthetics.
Simple living. Homewerk Cabins are
building better ways to live.

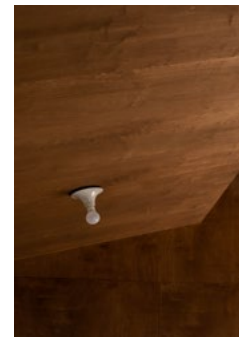


About Homewerk small homes

Homewerk is a multi-disciplinary build and design studio that create interiors, furniture and small transportable dwellings. Established in 2020, Homewerk is a small family-run business helmed by Oliver Starr and Sammy Scapens. Oliver is a registered builder with over 10 years of experience, while Sammy has a wealth of knowledge and expertise in architecture, the arts and design. Over the years their work has spanned interior and furniture design, renovations, fit-outs and new builds.

Sammy and Oliver's latest endeavour, Homewerk Small Homes, stems from their desire to create beautiful and functional spaces that are good for the soul. These affordable, architecturally designed cabins are created for you to fill with memory and meaning. Each element, from layout to colourway to furnishing, has been carefully curated to foster a feeling of calm, creativity and respite - a place where one can feel at home.

These Small Homes sit at the intersection of architectural design and practicality. Built to adapt to your needs, they are the perfect budget-friendly holiday cabin, accommodation for whanau or rental home. The cabins are also compact and easy to transport, making them adaptable



Why pick a Homewerk Small Home?

- Architectural design
- Locally sourced materials
- Reduced waste
- Efficiency and speed
- Budget-friendly
- Convenience
- Reliability
- Good for remote sites
- Transportable
- Neat and compact



Our Cabins

Inspired by 1960s New Zealand state homes, Homewerk Small Homes offer beautifully designed spaces that are both practical and budget-friendly. There are 3 layouts to choose from, with each featuring built-in furniture, simple stainless worktops, mid-century style chrome tapware and classic colourways.

- Three design-led and transportable cabin floor plans: Cabin Petite, Cabin Original or Cabin Double.
- Three interior and exterior colourways
- Three cladding options
- Three flooring options
- Three lighting choices

The process

Custom Enquiry

- The Homewerk Team will contact you to discuss your project.
- We will plan a site visit.
- Work through our three customisable options.
- A quote will be sent through for you to review and approve.
- Once everything for your small home is decided and your purchase agreement is signed, a 10% build reservation is required. This places you in the build queue.
- Homewerk will compile and submit consent documentation to the council.

4-8-Week Consent Process

- Once consents are issued and we are ready to start building a 60% payment is required.
- Homewerk will order all materials required and building will begin!

8 - 12 Week Building Process

- With the build nearing completion, a final 30% payment is due prior to your Homewerk Small Home leaving our worksite.
- Confirm shipping and organise transport.
- Your perfect Homewerk Small Home is transported to it's destination and arrives on site with a welcome pack.



How it works

Step 1:
Select your floor plan

We offer three design-focused floor plans:

- Small Home Petite - a small loft studio
- Small Home Originale - one bedroom + bathroom + living area
- Small Home Double - two bedrooms across two floors + bathroom + living area

Step 2:
Pick your colour palette and materials

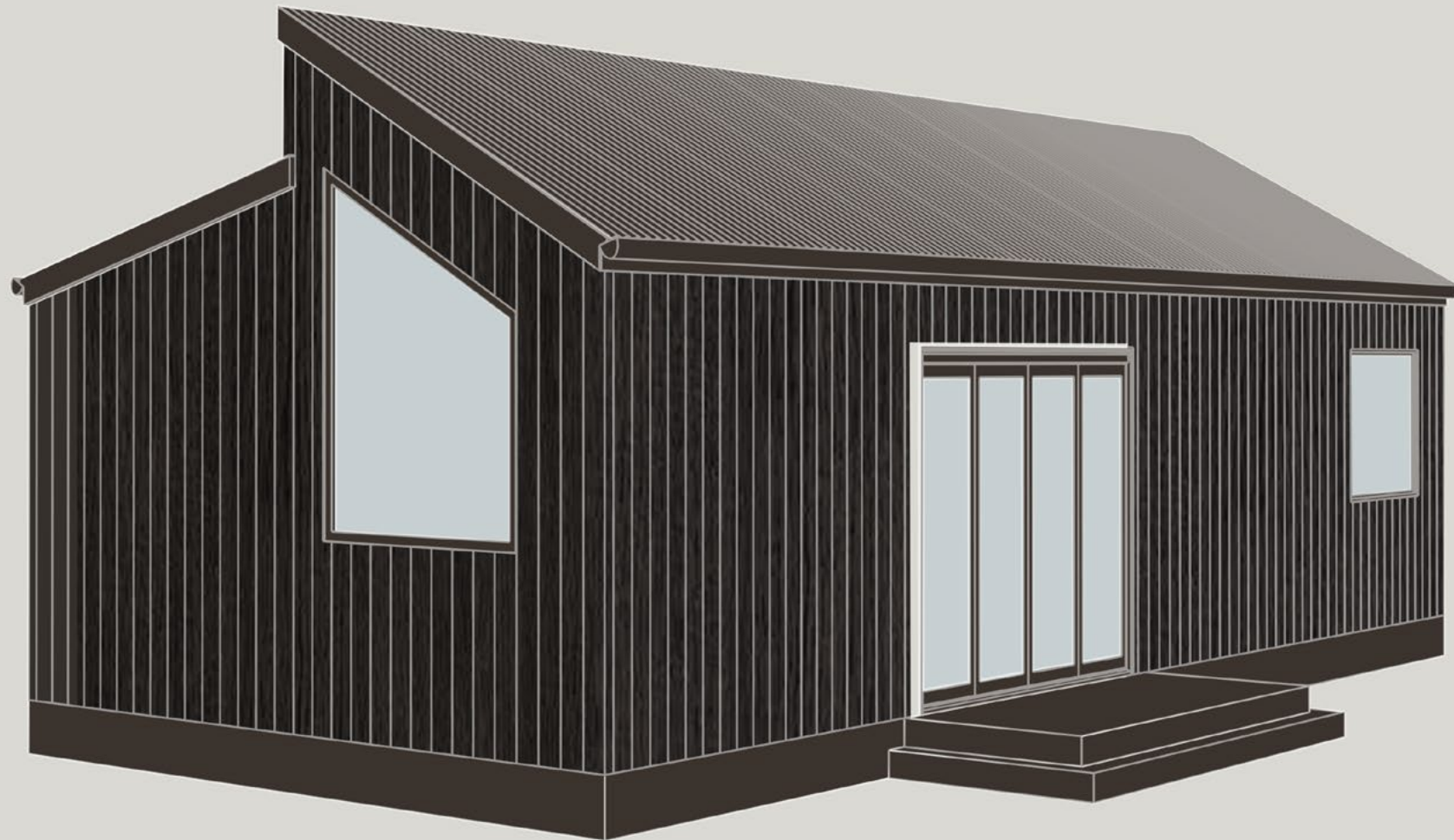
We have carefully curated three unique colour combinations to choose from - Viridian, Cobalt and Umber. These colour-ways compliment the cabins by adding a subtle mid-century feel. The built-in furniture and cabinetry will be lacquered to match. Here you will also pick your exterior colour, cladding, flooring and lighting.

Step 3:
Make it your own

You can make your cabin work for you by adding skylights, fire places or even solar panels and fittings to suit off-grid lifestyles.



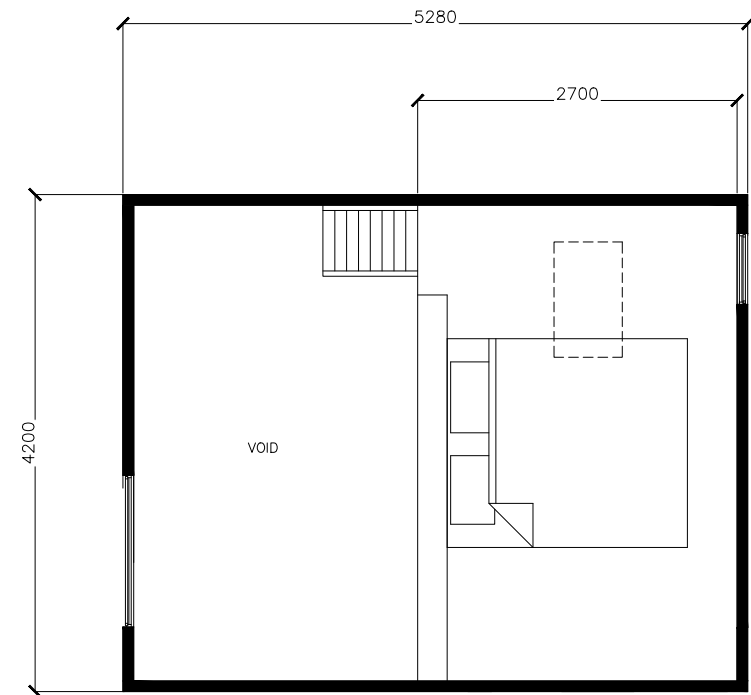
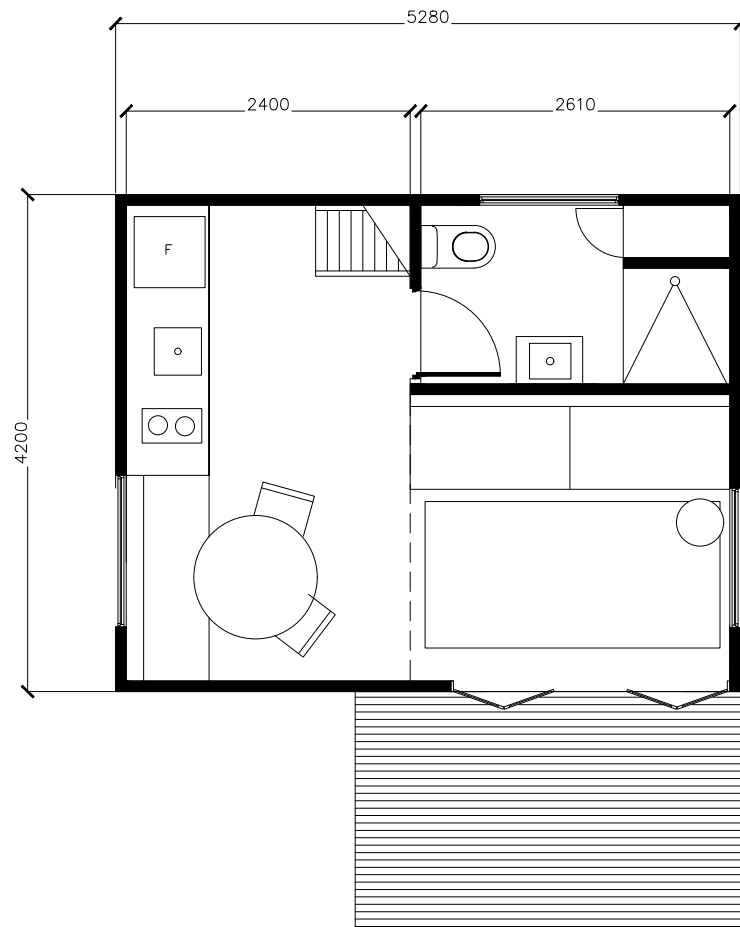
Cabin Originale render



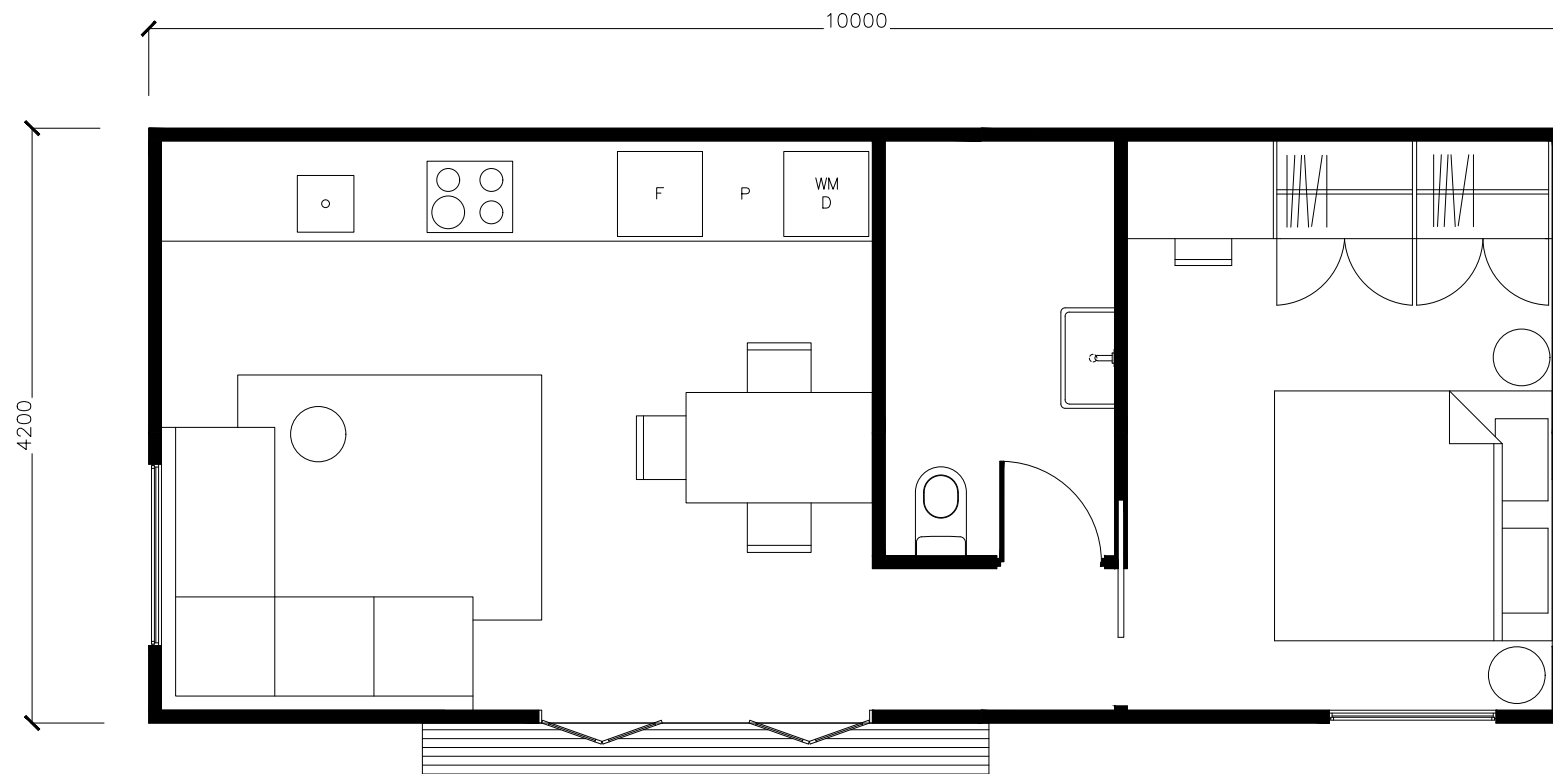
Cabin Petite render



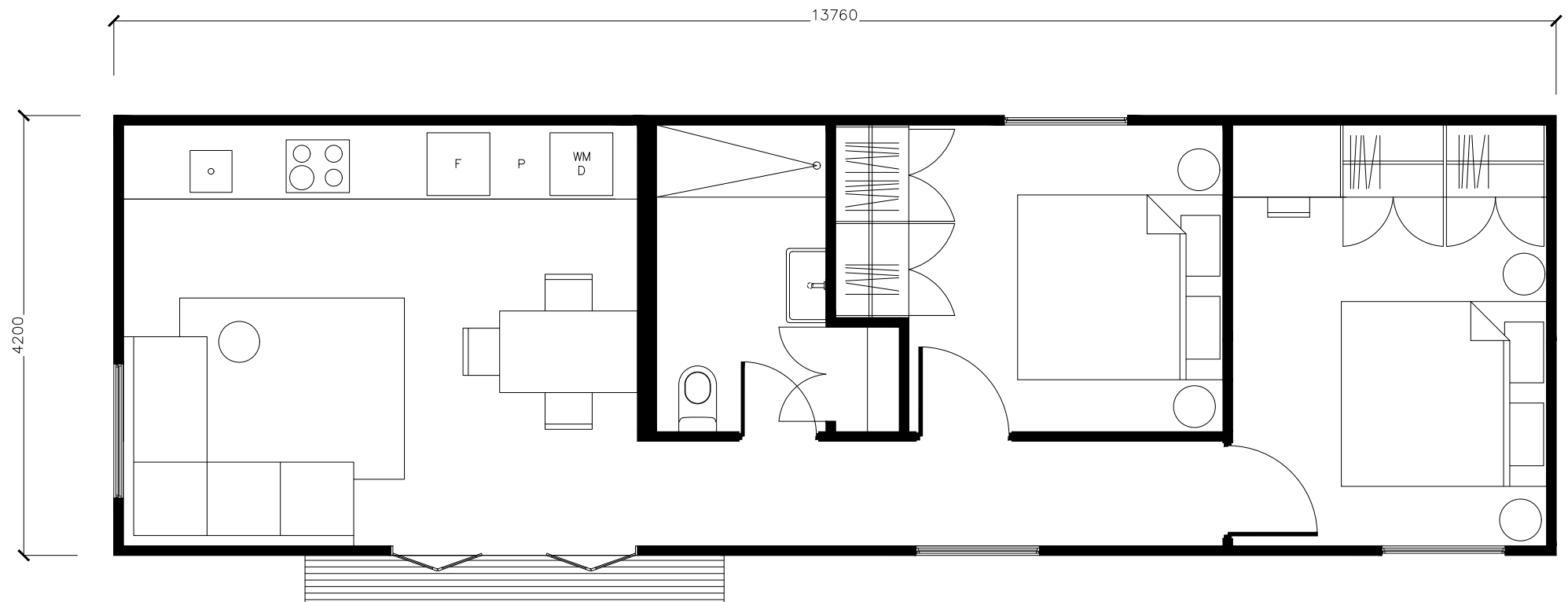
Floor plan: Petite



Floor plan: Cabin Originale



Floor plan: Double



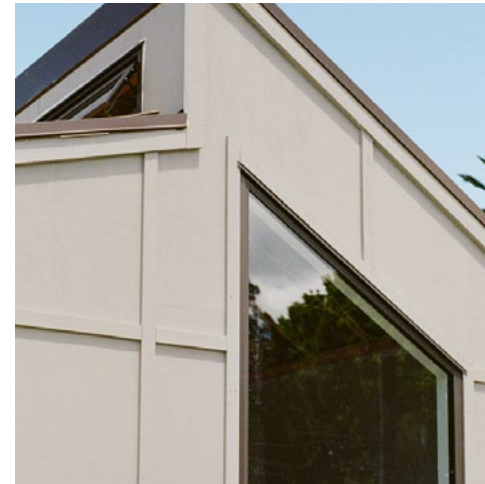
Base model materials



Roofing

Simple Corrugate roofing

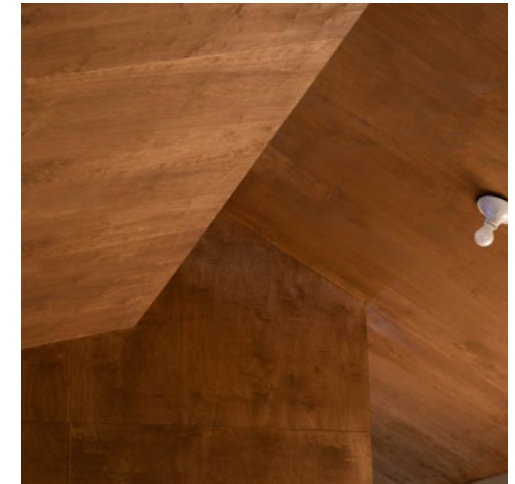
- ↗ Three Colour Ways Available
- ↗ New Zealand made
- ↗ Water Resistant
- ↗ Easy Care and Maintenance



Joinery

APL Metro joinery, a stylish and heavy duty range

- ↗ Three Colour Ways Available
- ↗ New Zealand made
- ↗ Double Glazed
- ↗ Scratch Resistant

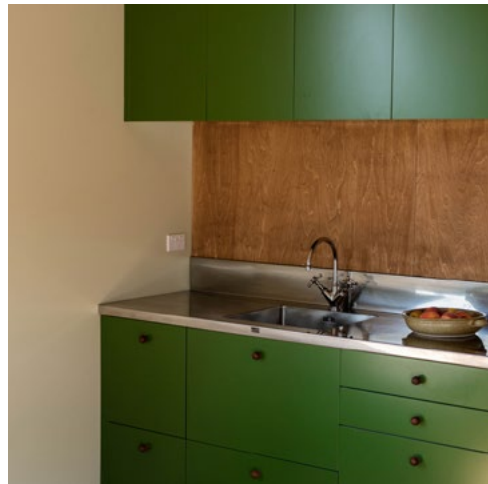


Interior Lining

Birch Plywood Stained with Osmo Oil and Gib Board.

- ↗ Multiple Stain Colors
- ↗ Stain is Natural and Toxic Free
- ↗ Hard wearing

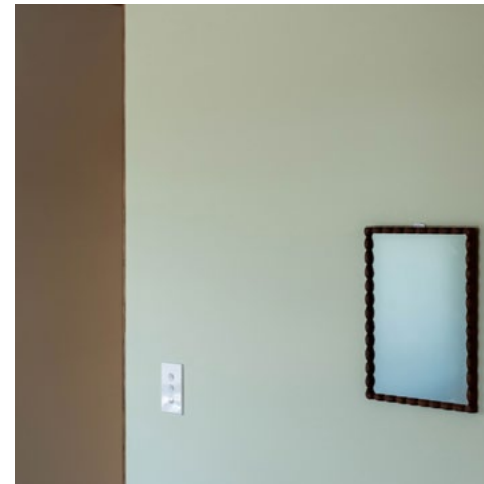
Base model materials (cont.)



Kitchen/Laundry/ Bathroom Cabinetry

Melteca Cabintery with Lacquer Faces

- ↗ New Zealand made
- ↗ Lacquer finish
- ↗ Three Colour ways availabl



Gib

Mid-century inspires and simple, these small spaces offer a premium finish

- ↗ Range of colours
- ↗ Modern, quality finish
- ↗ New Zealand made



Insulation

Terra Lana Wool Insulation

- ↗ Premium Performance
- ↗ Sustainable
- ↗ Environmental benefits

Flooring Options



Cork

Ready Cork

- ↗ Sustainable
- ↗ Eco-Friendly
- ↗ Waterproof



Oak Laminate

Quick-Step Impressive

- ↗ Range of colours
- ↗ Modern, quality finish
- ↗ Hard wearing



Walnut Laminate

Quick-Step Impressive

- ↗ Range of colours
- ↗ Modern, quality finish
- ↗ Hard wearing

Ceiling and Wall Lights



Teti

Wall and Ceiling Light

- ↗ Four Colours
- ↗ Thermoplastic Resin
- ↗ Designed in 1907's by Vico Magistretti



Wall Light

Lampe de Marseille

- ↗ Spun aluminum diffuser
- ↗ Designed by Le Corbusiere



Wall Light

Applique A Volet Pivotant

- ↗ Aluminium adjustable diffuser "volet"
- ↗ Indirect light output towards the wall

Pendant Light Options

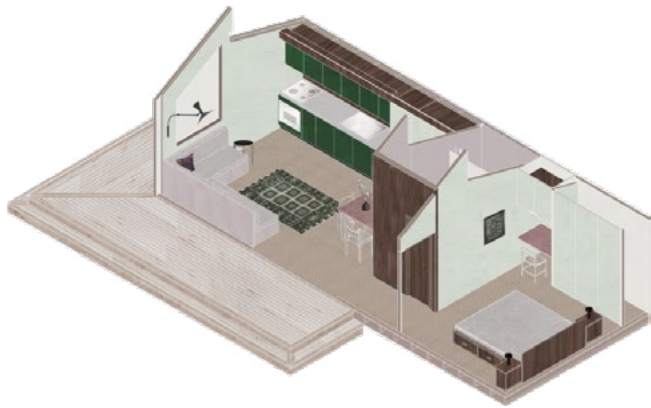


HAY Elipse

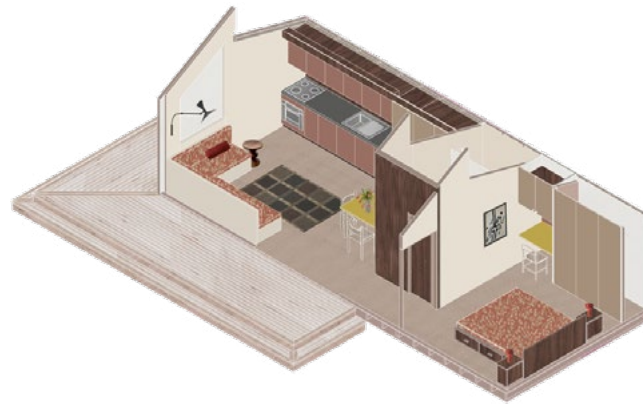


HAY Circle

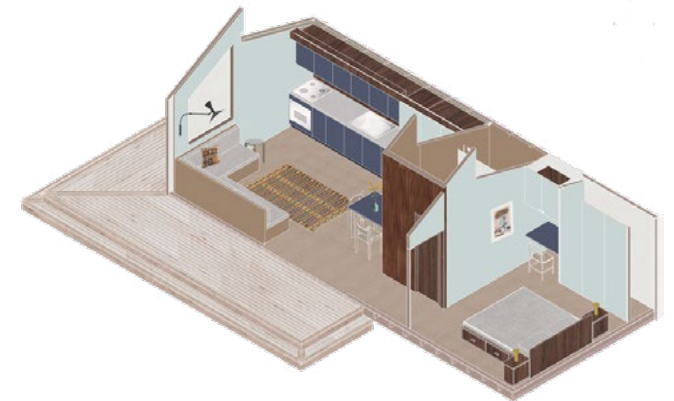
Colour schemes



Verridian



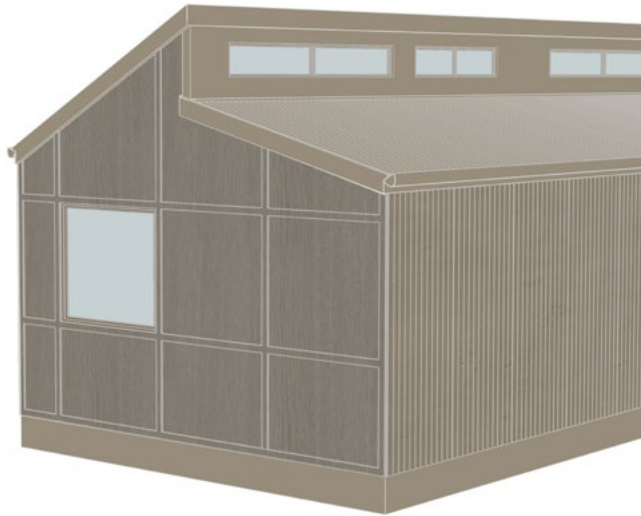
Umber



Cobalt



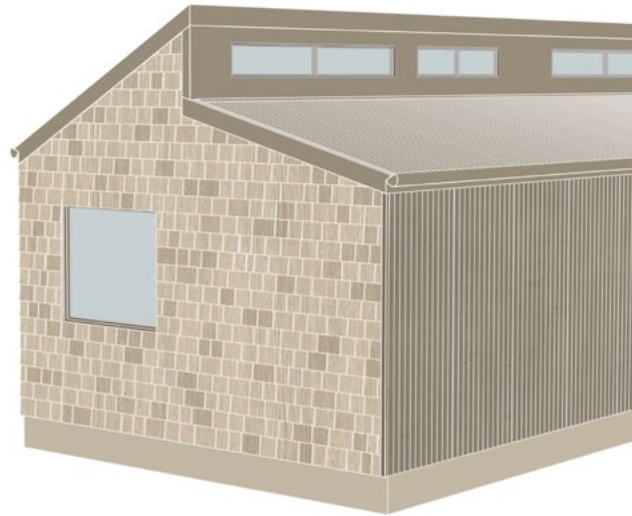
Exterior cladding options



Board & Batten

Tricald Board with Special Batten Detailing

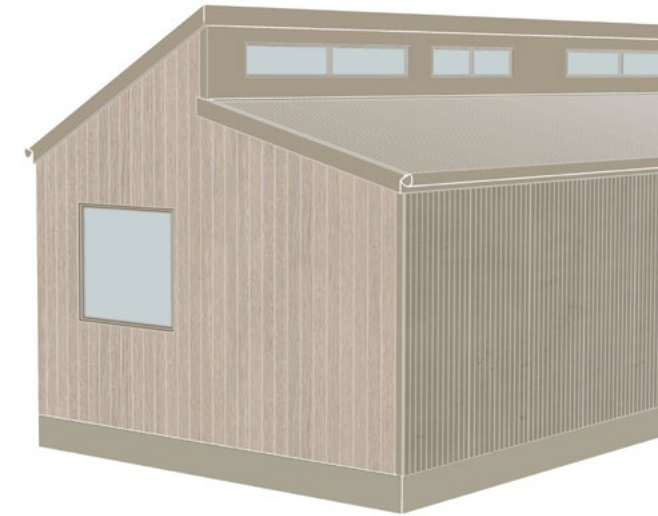
- ↗ Enduroclad Board and Batten
- ↗ Made in Aotearoa
- ↗ Range of Paint colours



Shingle

Aotearoa Grown Radiata Pine Shingles

- ↗ Branz Approved
- ↗ Aotearoa Radiata Pine
- ↗ Location Dependant

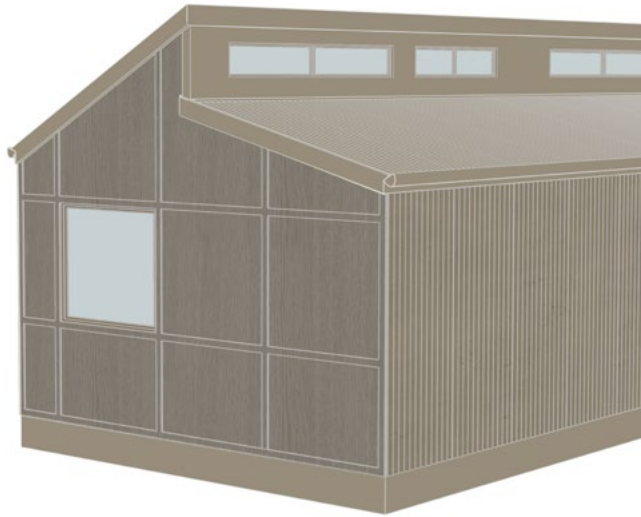


Abodo Vulcan

Aotearoa Thermally Modified Pine

- ↗ Responsibly Sourced
- ↗ Three Stain Options
- ↗ Grown in New Zealand

Roof Iron Colours



Lichen

TSR: 44%
LRV: 28%

Coloursteel Lichen



Scoria

TSR: 32%
LRV:12%

Coloursteel Scoria



Lignite

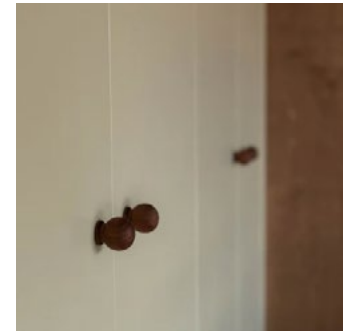
TSR: 30%
LRV:11%

Coloursteel Lignite

Finishes



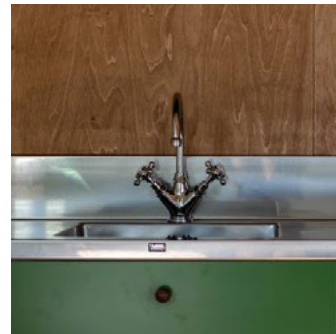
Dining Table



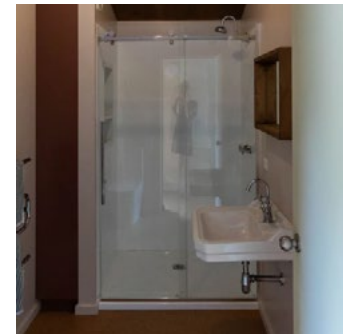
Handles



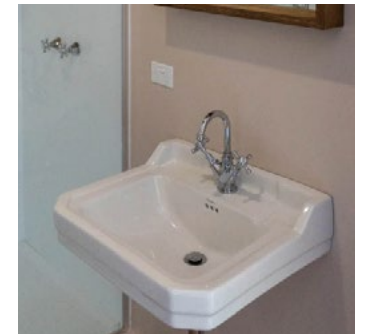
Couch finish



Tapware



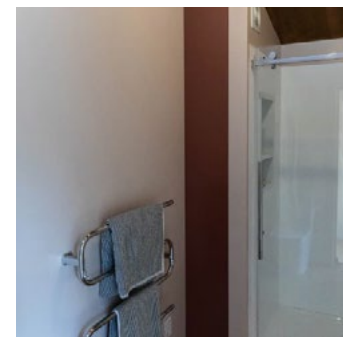
Shower



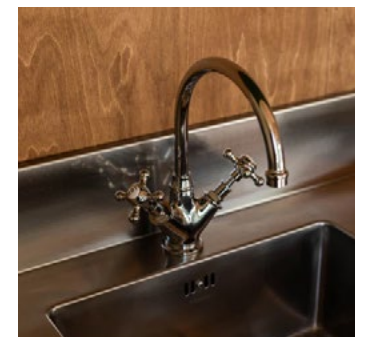
Basins



Squab

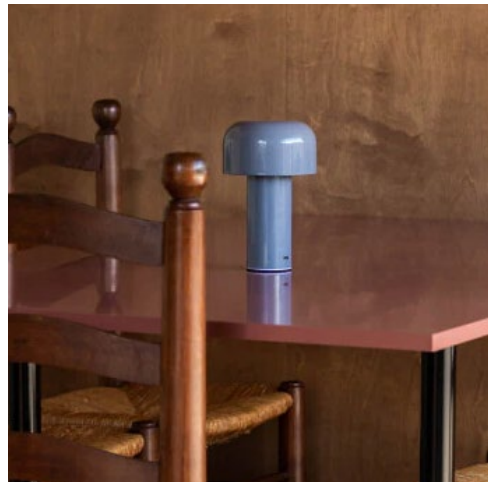


Bathroom storage



Stainless steel bench

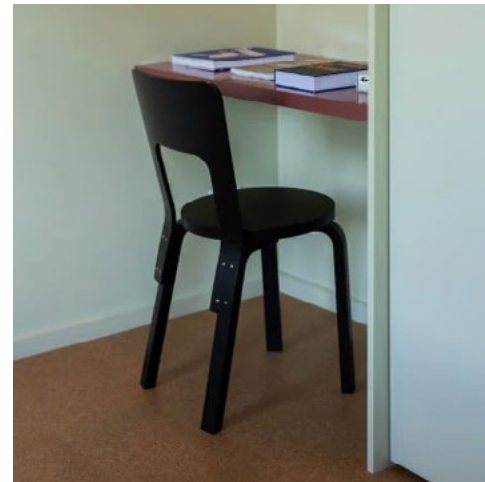
Extras



Bellhop lamp

Portable Lamp

- ↗ Multiple colours
- ↗ Rechargeable and portable
- ↗ Atmospheric
- ↗ A modern day candle



Alvar Aalto Chair

Chair 66

- ↗ Multiple colours
- ↗ Designed by Alvar Aalto
- ↗ Compact

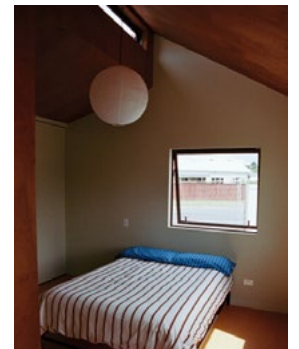
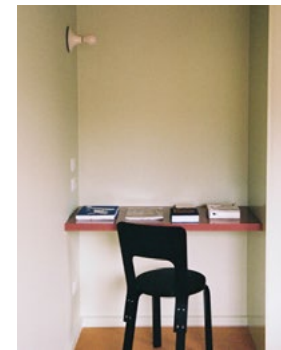
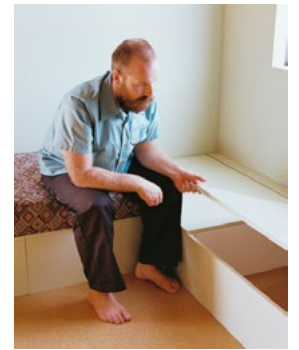
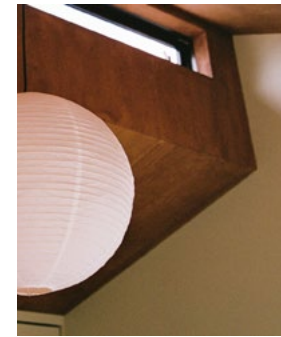


Sea Grass Matt

Rug

- ↗ Customisable Sizes
- ↗ Easy to clean
- ↗ Natural and sustainable

Building simpler ways of living.



+64 27 321 4361
@homewerk_nz
hi@homewerk.co.nz