

IFX9201 also acceptable

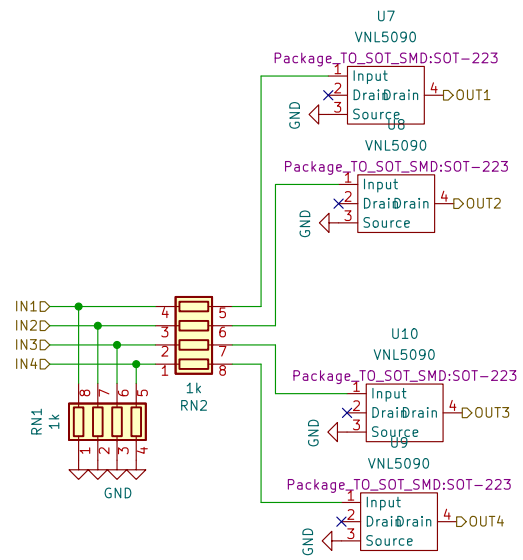
Sheet: /etb-2/
File: etb-9201.kicad_sch

Title:

Size: A4
KiCad E.D.A. kicad (6.0.1)

Date:

Rev:
Id: 2/7



Sheet: /Lowside Adder/
 File: Lowside Adder.kicad_sch

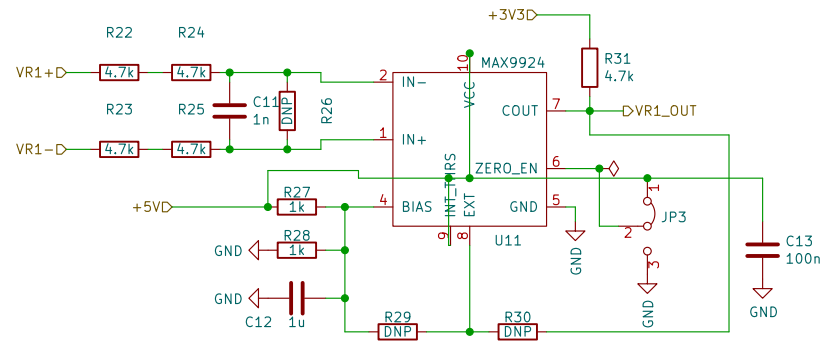
Title:

Size: A4
 KiCad E.D.A. kicad (6.0.1)

Date:

Rev:
 Id: 4/7

Yes, we know that the polarity is flipped going in to the VR interface chips.
 While originally on accident, it's no big deal since they invert anyway;
 When VR+ transitions to a higher voltage than VR-, VR_OUT will output a rising edge.
 See issue <https://github.com/mck1117/proteus/issues/57> for more detail



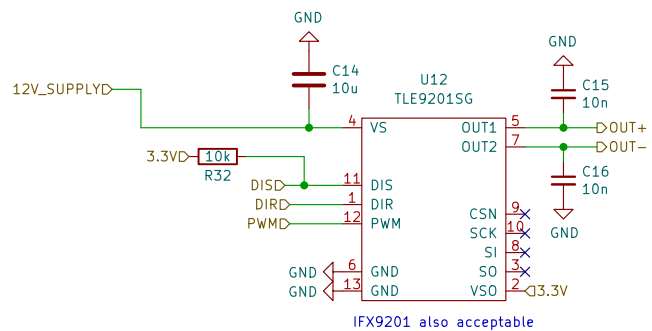
Optional setting in Mode C for no adaptive threshold timeout – See MAX9924 Datasheet
 Components as specified put chip in mode A1. Flip jumper and install R1219+R2020 for mode C.

Sheet: /WVR 1/
 File: VR conditioner.kicad_sch

Title:

Size: A4
 KiCad E.D.A. kicad (6.0.1)

Date:
 Rev:
 Id: 5/7



IFX9201 also acceptable

Sheet: /etb-1/
 File: etb-9201.kicad_sch

Title:

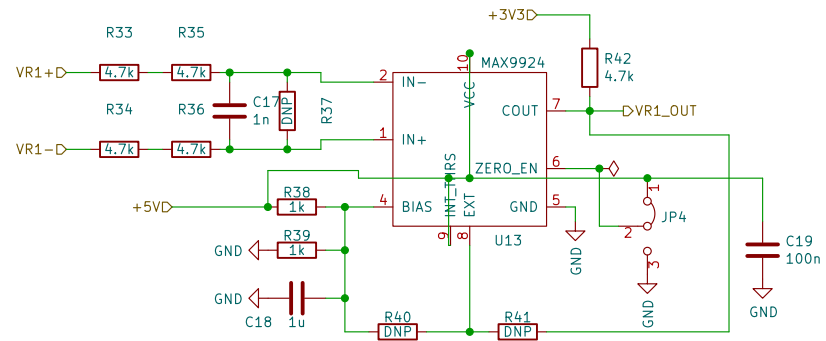
Size: A4
 KiCad E.D.A. kicad (6.0.1)

Date:

Rev:

Id: 6/7

Yes, we know that the polarity is flipped going in to the VR interface chips.
 While originally on accident, it's no big deal since they invert anyway:
 When VR+ transitions to a higher voltage than VR-, VR_OUT will output a rising edge.
 See issue <https://github.com/mck1117/proteus/issues/57> for more detail



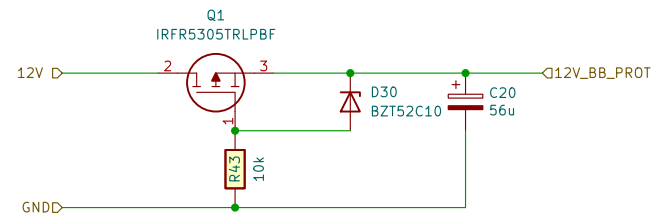
Optional setting in Mode C for no adaptive threshold timeout – See MAX9924 Datasheet
 Components as specified put chip in mode A1. Flip jumper and install R1219+R2020 for mode C.

Sheet: /WVR2/
 File: VR conditioner.kicad_sch

Title:

Size: A4
 KiCad E.D.A. kicad (6.0.1)

Date:
 Rev:
 Id: 7/7



Sheet: /ETB Prot/ File: ETB_Prot.kicad_sch		
Title:		
Size: A4	Date:	Rev:
KiCad E.D.A. kicad (6.0.1)		Id: 9/7