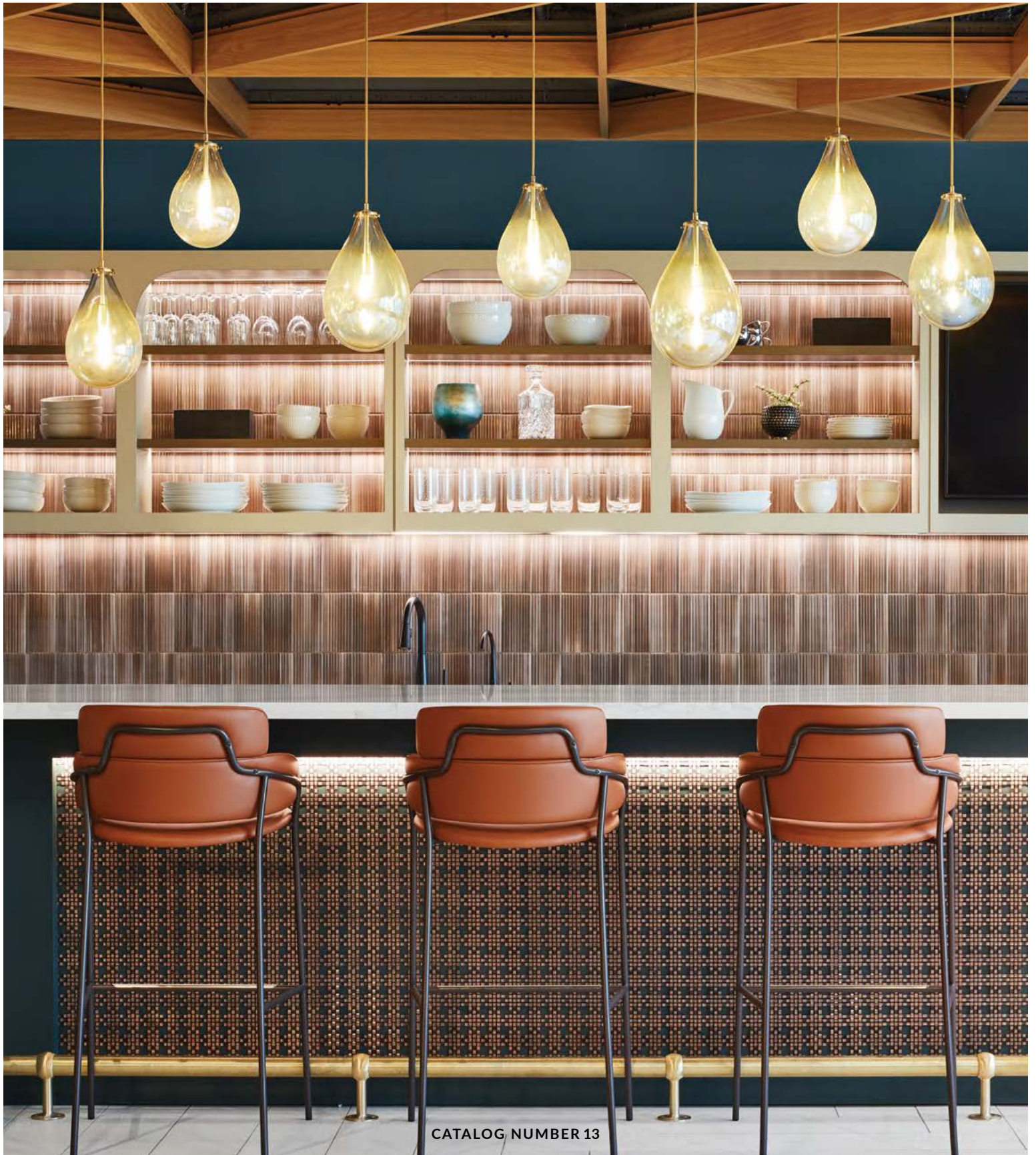


TRACY GLOVER

OBJECTS AND LIGHTING



CATALOG NUMBER 13



Willow and Globe Lantern shapes
 Angela Tucker Photography

Enchanted Forest Lanterns. Stylized tree shapes made from blown glass and mounted on metal trunks. Enjoy one by itself or put together your own forest.



Clockwise from the left:
 Willow sculpture, Cypress
 Lantern, Globe sculpture,
 Cypress sculpture, Willow
 Lantern, Onion Lantern



Clockwise from the left:
 Onion Lantern, Globe
 Lantern, Cypress Lantern,
 Onion Lantern

Cover shot: Whitney Architects
 Hall+Merrick+McCaugherty Photographers

Gourd Collection.

Hang Gourds from downrods or hand-knotted ropes.



Gourd Pendants
Fairfield Inn & Suites
iGroup Design



Constellation Chandelier
Lena Wang Interior Design
Emma Tannenbaum Photography

Constellation Collection.

Use Constellation sconces and chandeliers to create your own night sky. Unique configurations available.



Constellation Sconce
Clean Line Consulting
Gibeon Photography



Teardrop Sconce

Teardrop Collection.

The Teardrop is a sensuous shape, reminiscent of a glassblower's bubble. It dangles lightly from a slender cord, available as a sconce or pendant, or grouped in multiples from a shared canopy.



Teardrop Chandelier
Kelly Taylor Interior Design
Nat Rea Photography



Teardrop Pendant
Martha Dayton Design
Space Crafting Photography



Rondel Sconce
 ROY Hospitality Design
 Sen Creative Photography



Rondel Flushmount



Double Rondel Sconce



Triple Rondel Sconce



Rondel Pair Sconce

Rondel Collection.

Beautiful glass rondels diffuse and bounce light and color. A myriad of mounting options, for use on ceilings and walls. Hang them singly, doubly, and triply!

Dixie Collection

Light the way – your way!
The adjustable Dixie Sconce collection is a modern and elegant means to place a spot of light exactly where you need it.



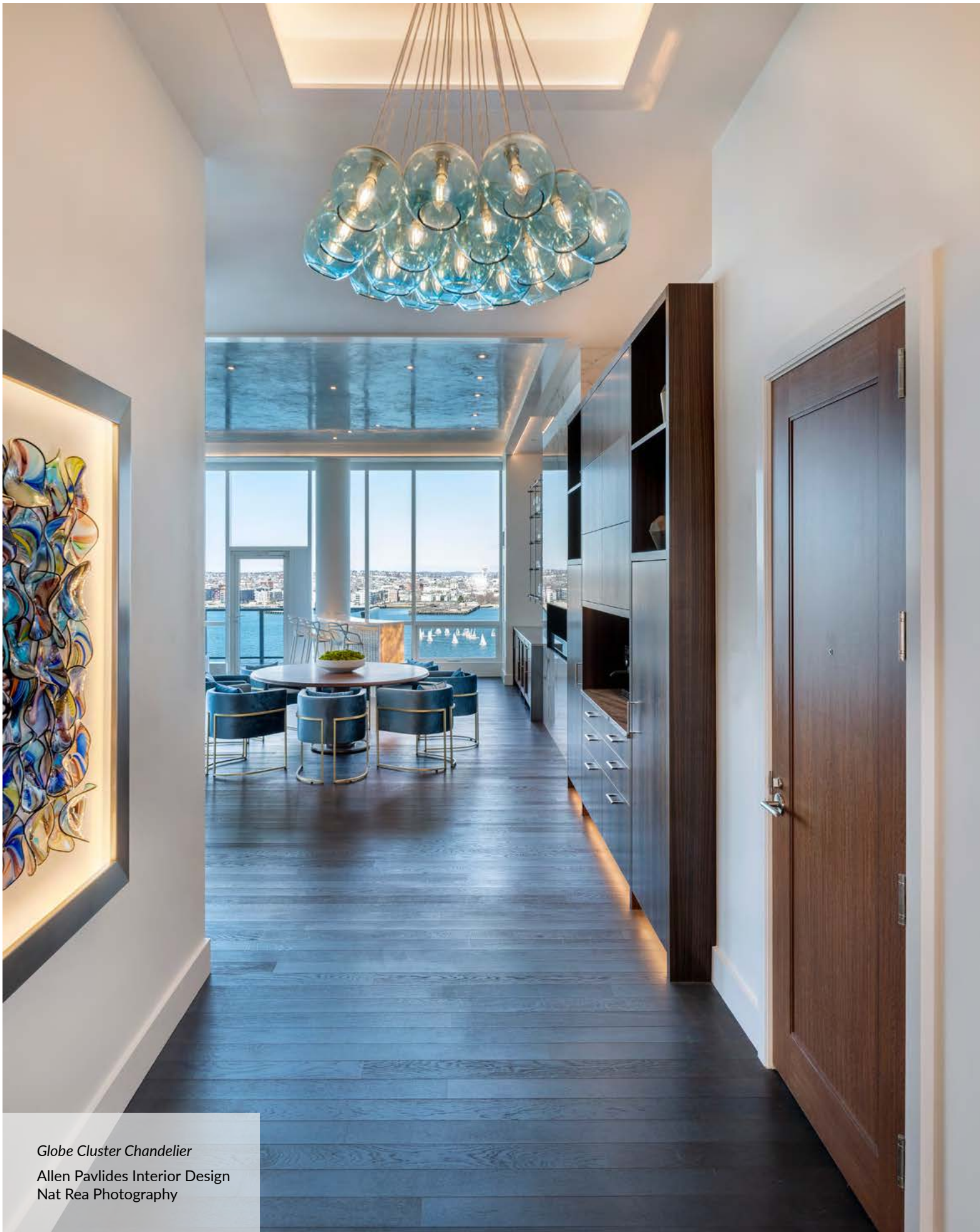
Dixie Bifold Sconce



Dixie Pivot Sconce



Dixie Pivot Sconce
Zimmerman Workshop
M. Daddio Builders



Globe Cluster Chandelier
 Allen Pavlides Interior Design
 Nat Rea Photography



Shapes that cluster.

Bunched, cinched, or gathered, some shapes lend themselves well to clustering. Cones, Globes, and Dimples are available in groups of three, four, seven, or nineteen.





Cloche Linear Chandelier
Dressing Rooms Design,
Eric Roth Photography

Cloche Collection. Cloches hung singly as pendants and sconces, balanced delicately from mobiles, and lined up smartly on linear canopies.



Cloche Sconce



Cloche Pendant



Cloche Mobile Chandelier
Henderson Design Group
Surf Please Photography



Trumpet Pendants
Nicole Snyder Interiors
Gibeon Photography



Beads on Stems. Beehive Pendants with Jeweled Stems flank a Globe Pendant with a Beaded Cord. Dress up the humble cord or downrod with a limitless combination of glass beads.



Trumpet Collection.

Roman glass, reconfigured for modern times. Elegant and timeless, the Trumpet comes in several sizes and is also available as a sconce.



Beehive Pendants with Jeweled Stems
Rinfret, Ltd.
Landino Photo

This series of fixtures were designed to be an interchangeable set of parts that combine well or look great used alone.

Barrel, Canister, Dimple, Enoki, Globe, and Onion shapes can be hung from cords or downrods, solo or on multiport canopies. Also available as a sconce.



Barrel Pendants
Kennernecht Design,
Greg Premru Photography



Lucia Chandelier
Embellishments
Interior Design,
Jared Kuzia
Photography

Multiport Chandelier
available with any of our
diffuser shapes

Barrel Pendants on a
multiport canopy



Onion Semiflushmount



Barrel Semiflushmount



Dimple Semiflushmount



Globe Pendant



Enoki Pendant



Canister Pendant



tg TRACY GLOVER
OBJECTS AND LIGHTING

59 Blackstone Avenue, Unit 11
Pawtucket, Rhode Island 02860
tracygloverstudio.com
sales@tracygloverstudio.com
tel 401.724.1100

Urn Sconce